

Research article

Open Access

Rheumatoid peripheral blood phagocytes are primed for activation but have impaired Fc-mediated generation of reactive oxygen speciesAnna-Marie Fairhurst¹, Paul K Wallace², Ali SM Jawad³ and Nicolas J Goulding¹¹William Harvey Research Institute, Barts and the London, Queen Mary's School of Medicine and Dentistry, Charterhouse Square, London EC1M 6BQ, UK²Flow Cytometry Center, Roswell Park Cancer Institute, Elm and Carlton Streets, Buffalo, NY 14263, USA³Department of Rheumatology, Barts and the London NHS Trust, Bancroft Road, Mile End, London E1 4DG, UKCorresponding author: Nicolas J Goulding, n.j.goulding@qmul.ac.uk

Received: 11 Dec 2006 Revisions requested: 22 Jan 2007 Revisions received: 15 Feb 2007 Accepted: 13 Mar 2007 Published: 13 Mar 2007

Arthritis Research & Therapy 2007, **9**:R29 (doi:10.1186/ar2144)This article is online at: <http://arthritis-research.com/content/9/2/R29>© 2007 Fairhurst *et al.*; licensee BioMed Central Ltd.This is an open access article distributed under the terms of the Creative Commons Attribution License (<http://creativecommons.org/licenses/by/2.0>), which permits unrestricted use, distribution, and reproduction in any medium, provided the original work is properly cited.**Abstract**

Significant levels of circulating immune complexes (ICs) containing rheumatoid factors and immunoglobulin G in peripheral blood are a characteristic feature of rheumatoid arthritis (RA). ICs interact through Fc γ receptors (Fc γ R) to activate phagocytes in numerous inflammatory processes. The high concentration of neutrophils in synovial fluid during active phases of the disease, together with their destructive capacity, pose important questions as to their role in the pathogenesis of RA. Functional defects in RA or control peripheral blood neutrophil Fc γ Rs were examined with a specific Fc γ R-mediated reactive oxygen species (ROS) assay. Heterologous cross-

linking of Fc γ RIIa and Fc γ RIIIb on neutrophils resulted in a significantly decreased production of ROS by RA cells compared with controls matched for age and sex. However, expression and homologous ligation of receptors did not differ between these groups. These data suggest that neutrophil priming does occur before emigration into the joint and that blood neutrophils from patients with RA have a functional impairment in cooperative Fc γ R-mediated ROS generation. This may account for the increased susceptibility to bacterial infection that arises in patients with severe disease.

Introduction

Immune complex (IC) formation is a characteristic feature of rheumatoid arthritis (RA). ICs have been located in the synovial fluid, the superficial layers of the cartilage and circulating in the periphery [1-3]. ICs activate inflammatory processes by two main overlapping mechanisms: first, through the soluble proteins of the complement system, and second, through interaction with one of three described receptors for the Fc constant region of immunoglobulin G (IgG), the Fc γ receptors (Fc γ R) [3-5]. IC interaction through Fc γ Rs activates phagocytic neutrophils and mononuclear phagocytes in several inflammatory processes.

Both murine and human studies have provided evidence for a primary role of neutrophils in RA. Of the cells infiltrating the

synovial fluid during the active phases of RA, 80 to 90% are neutrophils and turnover can exceed 10⁹ cells per day in a 30 ml joint effusion [6,7]. Depletion of neutrophils in an experimental model of the disease prevents the development of inflammation and decreases it once it has ensued [8]. Activation of neutrophils leads to degranulation, phagocytosis and the generation of reactive oxygen species (ROS) [9,10]. The subsequent release of proteolytic enzymes and reactive oxygen metabolites can result in tissue damage [11,12].

Neutrophils express Fc γ RIIa (CD32a), which is a single-transmembrane receptor with its own immunoreceptor tyrosine-based activation motif (ITAM) in the intracellular domain, and Fc γ RIIIb (CD16b), which does not have a cytoplasmic tail but is inserted into the membrane by means of a

BSA = bovine serum albumin; CR3 = complement receptor type 3; CRP = C-reactive protein; DHR = dihydrorhodamine; ESR = erythrocyte sedimentation rate; FBS = fetal bovine serum; Fc γ R = Fc γ receptor; fMLP = fMet-Leu-Phe; GAM = goat anti-mouse IgG; HAIGG = heat-aggregated IgG; PBS = phosphate-buffered saline; ROS = reactive oxygen species; TNF = tumour necrosis factor.

glycosylphosphatidylinositol anchor [13,14]. This FcγRIII isotype is expressed exclusively on granulocytes. It is the most abundant FcγR present on neutrophils and it is believed to be the primary binding molecule for ICs, working in tandem with FcγRIIa or complement receptor type 3 (CR3; also referred to as CD11b/CD18 or Mac-1) to mediate a full inflammatory response. Despite the lack of an intracellular signalling domain, homotypic ligation may transduce signalling events that are distinct from homotypic FcγRIIa and heterologous ligation [15].

In addition, there is a large amount of evidence that FcγRIIIb is important in both IC-mediated activation and phagocytosis of opsonised bacteria. Several investigations have shown that inhibition or removal of this receptor restricts both insoluble and soluble IC-mediated activation [16-20]. However, the extent of FcγRIIIb involvement is subject to debate.

Allelic specificity of FcγRIIIb affects the efficiency of phagocytosis of opsonised bacteria [21,22]. FcγRIIIb exists as one of three serological allotypes: neutrophil antigen (NA)1, NA2 or SH-FcγRIIIb (also referred to as HNA-1a, HNA-1b and HNA-1c, respectively [23], in which NA1 and NA2 differ in five nucleotides and SH-FcγRIIIb differs from NA2 at a single base. FcγRIIIb-NA1 has been shown to mediate a higher response in the internalisation of erythrocytes, as well as in the phagocytosis of opsonised bacteria. There have been no significant associations between polymorphisms in FcγRIIIb and the development of disease; however, patients with RA who have the NA2 allele are associated with an increased prevalence of respiratory tract infections [24-27]. This suggests a mechanistic role for FcγRIIIb in the well-known increased susceptibility and increased risk of death from bacterial infection observed in RA [28-30].

The importance of the adhesion molecules, integrins and selectins in mediating the rolling and tethering of neutrophils to the endothelium is well established [31]. In this study we measured the expression of L-selectin (CD62L) and β-integrin, CR3, which are established markers of neutrophil activation [32,33]. The most accepted inflammatory measurements used in clinical medicine are the erythrocyte sedimentation rate (ESR) and levels of C-polysaccharide reactive protein (C-reactive protein; CRP) [34]. ESR indirectly reflects potentially increasing serum proteins, such as fibrinogen, acute-phase proteins and immunoglobulins [35]. CRP is the most studied acute-phase protein and is a good measure of activity of disease because high circulating levels are correlated with the acute inflammatory stages of the disease, and low levels with quiescent stages [36].

The destructive capacity of joint neutrophils in RA, together with a delay in apoptosis, is well established, but peripheral changes in neutrophil function are less clear. In this study we examined the expression and function of the individual FcγRs

on neutrophils in patients with RA who had active synovitis. Although the basal and stimulated expression of FcγRIIa was similar to that of FcγRIIIb, heterologous ligation of both receptors resulted in a decrease in FcγR-mediated ROS generation in patients with RA. Although several studies have demonstrated that individual homologous or heterologous ligation of FcγRIIa and FcγRIIIb may induce ROS generation, this is the first report to demonstrate a deficiency in the co-ligation of these receptors in RA [17,37,38].

Materials and methods

Patients

Patients attending the Rheumatology Clinic at The Royal London Hospital, Mile End, London, UK, were diagnosed with RA according to the criteria outlined by the American College of Rheumatology (ACR (ARA) [39]). Of 18 patients with RA recruited for the investigations, 4 were male and 14 were female. Demographics of the patients are shown in Table 1. All were assessed as having active synovitis. Peripheral blood was collected into a syringe Vacutainer containing 3.8% EDTA (10% v/v; Becton Dickinson, Oxford, UK). The average age of all 36 volunteers was 62.6 ± 13.2 (mean \pm SD). Venous blood samples from control volunteers matched for age and sex were taken within 1 hour of collection from the patient. All blood was taken with full consent and with prior approval from the local research ethics committee (East London and City Health Authority Ethics Committee). Circulating blood levels of haemoglobin, CRP, leucocytes and platelet counts, in addition to the ESR, were determined in the population with RA at the hospital where they were receiving treatment.

Isolation of leucocytes by dextran sedimentation

Preliminary studies demonstrated that the surface expressions of L-selectin and CR3 were altered on cell separation by using density centrifugation methods (Percoll and Ficoll; data not shown). Dextran sedimentation produced minimal phenotypic cellular changes and controlled for serum immunoglobulin and differences in cell numbers. The expression of FcγRs was unaltered, regardless of cell separation procedure. Receptor expression was analysed in isolated leucocytes from anticoagulated peripheral blood by dextran sedimentation. Blood was mixed 1:1 with prewarmed 2% dextran (Polysciences Inc., Warrington, PA, USA) in RPMI medium (Sigma, Poole, UK) and incubated at 37°C for 30 minutes to sediment the erythrocytes preferentially. The white-cell supernatant was removed and centrifuged at 1,400 r.p.m. for 5 minutes; the cell pellet was washed in 1% BSA in PBS (prechilled to 4°C). The cell pellet was resuspended with staining buffer (prechilled to 4°C) to a concentration of 5×10^6 cells/ml. All subsequent staining procedures were conducted on ice.

In vitro stimulation of leucocytes with fMet-Leu-Phe or tumour necrosis factor

Blood was incubated 1:1 with RPMI complete medium, comprising RPMI 1640, 10% heat-inactivated fetal bovine serum

Table 1**RA patient demographic data, blood inflammatory parameters and treatment profile**

Sex	Age	ESR (mm/h)	CRP (mg/l)	Hb (g/dl)	Platelets ($\times 10^9/l$)	WBC ($\times 10^9/l$)	Lymphocytes Neutrophils ($\times 10^9/l$)	($\times 10^9/l$)	Medication
M	71	58	60	12.7	351	10.3	7.8	1.7	Diclofenac
M	53	93	36	10.3	417	10.5	8.4	1.5	Methotrexate
M	78	57	74	12.4	422	7.8	5.5	1.5	-
M	62	16	17	14.1	207	6.1	3.5	2	-
F	61	37	-	12.3	261	6.1	3.9	1.6	Leflunomide
F	75	61	77	11.6	246	6.5	5.3	0.8	-
F	42	27	17	13.7	356	12.7	10.4	1.8	-
F	63	49	45	11.1	359	5.8	4.7	0.6	Clarithromycin
F	56	20	-	13.9	263	8	5	2.5	Methotrexate, prednisolone, Losec, perindopril, Sinemet, aspirin
F	82	37	-	12	195	8.2	5.6	1.8	-
F	63	41	41	11.4	309	9.8	9.6	3.3	-
F	57	-	13.9	-	-	-	-	-	Methotrexate, prednisolone, (depo-medrone)
F	76	57	72	11	244	7.7	6.3	0.9	-
F	49	-	-	11.4	204	7.2	4.4	2.5	Azothioprime, meloxicam
F	45	48	-	12.9	259	7.4	5.6	1.3	Methotrexate, indomethacin
F	92	1	-	13.9	232	9.6	7.5	0.9	Penicillamine
F	56	18	-	13.7	481	8.2	5.1	1.9	Methotrexate, folic acid, prednisolone, Vioxx, antihypertensive treatment
F	44	7	-	13.2	241	7.1	4.8	1.3	Leflunomide
F	68	12	5	12.7	284	6.9	4.6	1.7	Azothioprime, prednisolone, alendronate, thyroxine, Losec
F	56	18	23	13.7	481	8.2	5.1	1.9	-
F	78	12	5	-	-	-	-	-	-
F	52	16	11	-	-	-	-	-	Leflunomide

Eighteen patients (4 male, 14 female; age 62.6 ± 13.4 years (mean \pm SD) with active synovitis and receiving a range of disease-modifying anti-rheumatic agents were recruited into the study. CRP, C-reactive protein; ESR, erythrocyte sedimentation rate; Hb, haemoglobin; WBC, white blood cells.

(FBS), 0.1 ml of sodium pyruvate, 2.0 mM L-glutamine, 25 mM 1 M HEPES, 0.1 mM non-essential amino acids, 0.25 μ g/ml amphotericin, 50 μ g/ml gentamicin and 50 μ M 2-mercaptoethanol (all from Sigma) with or without pre-optimised concentrations of fMet-Leu-Phe (fMLP) (final concentration 100 nM) or TNF- α (100 U/ml; 10 ng/ml) for 0 minutes, 30 minutes, 1 hour or 4 hours at 37°C. After incubation, white blood cells were separated by the dextran sedimentation method described above and resuspended to 5×10^7 cells/ml for extracellular staining of the cells.

Monoclonal antibodies

Murine monoclonal antibodies with the following specificities were used for primary stage staining: anti-Fc γ RIII (3g8), anti-Fc γ RII (iv.3), anti-NA1-FcRIIIb (CLBgran11) and anti-NA2-FcRIIIb (GRM1); all were gifts from Dr Paul Guyre (Dartmouth

College, Hanover, NH, USA). CD62L and CD11b were purchased from Serotec (Oxford, UK). Secondary goat anti-mouse IgG F(ab')₂ conjugated with fluorescein isothiocyanate was from CALTAG Labs (Burlingame, CA, USA).

Staining procedure

Leucocytes were pipetted into a 96-well polypropylene plate (Costar, Cambridge, MA, USA) at a concentration of 250,000 per well. The plate was centrifuged (1,400 r.p.m. for 5 minutes at 4°C) and the supernatant was aspirated. The cells and reagents were kept at 4 to 8°C for the remainder of the experiment. To the cell pellet, blocking IgG (12 mg/ml Cohn Fraction II/III; Sigma) and specific primary antibody at 60 μ g/ml were added and incubated for 45 minutes on ice. The cells were washed three times in staining buffer consisting of 0.2% BSA and 1 μ g/ml sodium azide in PBS. The goat F(ab')₂ anti-mouse

IgG fluorescein isothiocyanate conjugate was then added, at 1 µg per well, for 30 minutes on ice. The cells were washed with staining buffer and the remaining erythrocytes were lysed; the leucocytes were fixed with BD Fix and Lyse reagent (Becton Dickinson). The cells were then washed twice more in staining buffer, resuspended to 200 µl in 1% paraformaldehyde and maintained at 4°C in the dark until analysis.

Analysis of changes in antigen expression

Analysis by flow cytometry was performed with either a FACSCalibur or a FacScan analyser (Becton Dickinson). Forward and side-scatter gating removed contaminants such as cell debris. Data were acquired and analysed with the CellQuest® application on a Power Macintosh G3 computer. Analysis of leucocyte subpopulations was completed with forward and side-scatter analysis. Monocytes were found to have high CD14 expression, neutrophils had low CD14 expression and lymphocytes were negative for CD14 expression. Expression of the receptors was correlated with the clinical measurements of disease made in the clinic, such as CRP, ESR and cell numbers. For each sample a minimum of 2,000 monocytes in the mixed leucocyte population were collected. The individual cell populations were then gated according to cell type and the specific median fluorescence intensity for each receptor was evaluated. Calibration was completed with Rainbow Microspheres (Spherootech, Libertyville, IL, USA) to maintain consistency between experiments and to remove background fluorescence. Final values were expressed as milliequivalents of soluble fluorescein [40].

Quantification and viability of leucocytes

Türk's solution, comprising 0.01% crystal violet in 3% acetic acid (Sigma), was prepared in distilled water and used for the enumeration of leucocytes. Trypan blue solution was used to determine the percentage of viable cells. Cells were resuspended in PBS, diluted 1:10 in trypan blue (0.4%; Sigma) and examined with a haemocytometer within 5 minutes of the addition of the dye. In addition to trypan blue staining, the apoptotic state of cells was assessed by the determination of hypodiploid DNA, because DNA breakdown is a hallmark of apoptosis. This was completed with propidium iodide as described previously [41]. In brief, cells were resuspended in 300 µl of PBS in 2% FBS (BioWhittaker, Walkersville, MD, USA) and permeabilised with 750 µl of ice-cold ethanol for 10 minutes at 4°C (BDH Laboratory Supplies, Poole, UK). Cells were then resuspended in 300 µl of PBS containing 50 µg/ml propidium iodide and 0.5 mg/ml RNase A (Sigma). They were incubated for 20 minutes in the dark and washed once in PBS/FBS before analysis on a FACScan flow cytometer. Neutrophils were incubated overnight with 25 µg/ml etoposide (Sigma) as a positive control for apoptosis. There were no differences in the apoptotic state of isolated leukocytes.

Generation of F(ab')₂-biotin conjugates

Digestion of anti-FcγRII (iv.3) was completed with the ImmunoPure® F(ab')₂/Fab Ficin kit (Pierce, Rockford, IL, USA). This was found to have a greater percentage yield than pepsin digestion in preliminary studies, with no loss of avidity. Biotinylation of F(ab')₂ was completed with a Sulfo-NHS-LC-Biotin kit (Pierce). Efficacy of biotinylation was assessed with the 4-hydroxyazobenzene-2-carboxylic acid (HABA) assay. To ensure that the affinity of the antibodies for the receptors was not compromised in any way after these series of procedures, an extracellular flow-cytometric staining assay was used to confirm binding. The biotinylation procedure was also assessed with streptavidin-phycoerythrin.

Determination of reactive oxygen species

Oxidative burst was measured in neutrophils with the fluorochrome dihydrorhodamine (DHR)-123 (Sigma). This non-fluorescent and cell-permeable probe localises to the mitochondria, where it is converted into cationic DHR-123. It detects superoxide by reacting with hydrogen peroxide and/or peroxynitrite [42,43] to emit a 515 nm fluorescent signal when excited by a 488 nm argon-ion laser. DHR-123 was dissolved in dimethylsulphoxide to a concentration of 29 mM and stored in aliquots at -70°C. Neutrophils were isolated from peripheral blood by Ficoll-Histopaque density gradient centrifugation. Heparinised blood was mixed 1:1 with prewarmed RPMI 1640 and layered on a previously prepared step separation medium of equal volumes of Histopaque 1077 and Histopaque 1119 (Sigma). After centrifugation at 400 *g* for 30 minutes, the neutrophil layer at the 1119 and 1077 interface was carefully removed. Neutrophils were further purified by hypertonic lysis. The cell pellet was resuspended in ice-cold sterile water for 20 seconds followed by an equal volume of double-strength PBS to restore tonicity. They were resuspended to a final concentration of 5 × 10⁶ cells/ml in 1% BSA/PBS and kept on ice until stimulation. Aliquots (50 µl) were combined with 200 µl of buffer consisting of saline (0.15 M) with 5 mM HEPES. DHR-123 was added to give a final concentration of 1 µM and the cells were incubated at 37°C for 5 minutes. After incubation, cells were stimulated with heat-aggregated IgG (HA IgG) (100 µg/ml) or by heterotypic or homotypic cross-linking of FcγRIIIa and/or FcγRIIIb. Cross-linking was achieved by initial incubation of iv.3-B or 3g8-B (5 µg/ml) at 37°C for 5 minutes, as described by Vossebeld and colleagues [44] followed by various timed incubations with (Goat anti-mouse IgG (GAM); 50 µg/ml) or streptavidin (10 µg/ml). HA IgG was prepared by heating 1 mg/ml IgG in PBS at 63°C for 30 minutes, followed by centrifugation and aspiration of the supernatant. Preliminary experiments provided optimum concentrations of iv.3-B, 3g8-B, GAM, streptavidin and HA IgG to cause activation. In addition, the time of incubation was also determined. After incubation, reactions were stopped with a final concentration of 0.2% sodium azide; the cells were then placed on ice and analysed immediately by flow cytometry.

Table 2

Fc γ RIIIb allotype gene frequency		
Population	Gene frequency	
	NA1	NA2
Total	0.36	0.64
Control	0.39	0.61
RA	0.34	0.66

The Hardy–Weinburg formula was used to determine Fc γ receptor (Fc γ R)IIIb NA1 NA2 allotype gene frequency. There was no difference in distribution between RA and control populations ($p > 0.05$).

Statistical analyses

Results are expressed as the arithmetic mean \pm SEM for a given number of values n . Significant differences are defined as represented by a probability value, $p < 0.05$. Data was analysed with a Kolmogorov–Smirnov test for deviations from Gaussian distributions. All values were less than 0.2, $p > 0.1$; all data were therefore assumed to be normally distributed. Correlation was determined with linear regression to determine the line of best fit and with a two-tailed Pearson product moment correlation test to quantify how well x and y varied together. Statistical differences between two populations were analysed with either an unpaired t -test for data analysed for Gaussian distribution, or a two-tailed Mann–Whitney test for unpaired observations in all other cases. Kinetic distributions were analysed with either one-way or two-way analysis of

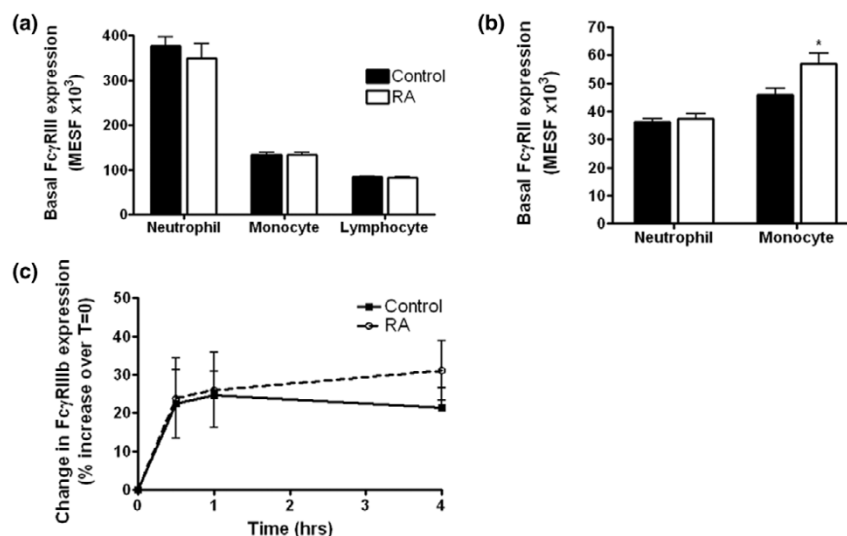
variance with repeated measures. Significant changes ($p < 0.05$) were then analysed with the Bonferroni Dunn *post hoc* test that analyses associations between every combination of two parameters within the data. Analyses were completed with GraphPad Prism (version 3.00 for Windows; GraphPad Software, San Diego CA, USA) and Statview (version 5.0.1 for Windows; SAS Institute Inc., Cary, NC, USA). Gene frequency was determined with the Hardy–Weinburg formula.

Results

Surface expression of Fc γ receptors on peripheral leucocytes

Expression of Fc γ RIII

Analysis of receptor expression of basal peripheral leucocytes determined no significant difference between neutrophil Fc γ RIIIb expression in RA and control subjects ($p > 0.05$; Figure 1a). About 30% of monocytes expressed detectable levels of Fc γ RIIIa, detectable by the 3g8 antibody. There was no significant difference between either the level of expression (Figure 1a) or the percentage of cells expressing Fc γ RIIIa in the RA population in comparison with the control (data not shown); 10% of lymphocytes expressed Fc γ RIII. These were either natural killer cells or a T-lymphocyte subset. There was no difference in expression of Fc γ RIII in the overall lymphocyte population (Figure 1a). The gene frequency of NA1 and NA2 distribution in the sample population was comparable to that of European countries, white and black Americans and Tunisians (Table 2) [45–49]. The distributions of Fc γ RIIIb allotypes were similar in RA cases and controls.

Figure 1

Expression of Fc γ receptors by rheumatoid and age/sex-matched control leucocytes. Baseline expression of Fc γ RIIIb (a) or Fc γ RIIIa (b) in patients with rheumatoid arthritis (RA) and in controls. Blood was analysed for the baseline expression of Fc γ RIII on circulating leucocytes in an RA population and compared with a control. Fc γ RIIIa was found to be higher on resting monocytes from patients with RA ($p < 0.05$; RA, $n = 18$; control, $n = 18$). Each experiment was performed in duplicate. (c) Change in Fc γ RIIIb expression on neutrophils in response to TNF- α . Two-way analysis of variance revealed no difference in the modulation of Fc γ RIIIb between RA and controls after stimulation with TNF- α . Results are expressed as the percentage change from the baseline expression (mean \pm SE). Each experiment was performed in duplicate. MESF, milliequivalents of soluble fluorescein.

Expression of FcγRII

Low levels of the inhibitory receptor FcγRIIb have been determined in neutrophils [50]. It is not known whether this molecule is expressed on the surface and therefore contributes to FcγR-mediated signalling. Intact iv.3 antibodies detect trace amounts of FcγRIIb, but it has never been detected by using Fab fragments of iv.3, either by flow cytometry or in immunoprecipitation experiments (Susheela Tridandapani, personal communication). By using biotinylated iv.3 F(ab')₂ fragments, specific for FcγRIIa, the potential impact of FcγRIIb was eliminated.

The baseline neutrophil expression of FcγRIIa did not differ between the two conditions and there was no correlation between resting receptor expression and any clinical measurement of disease (Figure 1b). However, examination of monocytic FcγRIIa revealed a higher resting expression RA than in controls (Figure 1b). Interestingly, there were no associations with any of the clinical disease activity parameters measured, which implies that the loss of FcγRIIa is not associated with severity of disease.

Fcγ receptor expression after stimulation

Peripheral whole blood from patients with RA or from control volunteers was incubated with TNF-α, fMLP or RPMI complete medium alone, as described in the Materials and methods section. Surface expression of FcγRIIb increased after stimulation with TNF-α (Figure 1c), with no observable differences between RA and control samples. These results were identical to those observed after stimulation with fMLP (data not shown). In addition, after stimulation with either fMLP or TNF-α a 20 to 30% increase in surface expression of monocytic FcγRIIa occurred, but this was not significantly different from the value at zero time (data not shown). There was no detectable modulation in surface expression of FcγRIIa on peripheral blood neutrophils or monocytes after stimulation with TNF-α or fMLP (data not shown).

Measurements of neutrophil and systemic activation

Expression and regulation of L-selectin

Examination of the basal expression of L-selectin on neutrophils showed a trend towards lower expression in patients with RA; however, this marginally failed to reach statistical significance ($p = 0.07$; Figure 2a). Examination of an association between basal L-selectin expression and ESR in patients with RA revealed a negative correlation between these variables ($R^2 = 0.29$, $p < 0.05$; Figure 2b). This suggests that the expression of L-selectin on neutrophils and monocytes decreases with the severity of the disease [36]. Correlations with other clinical markers of disease were not evident (data not shown). Analysis of L-selectin expression on monocytes revealed no difference between RA and control populations (Figure 2a). However, correlative analysis of ESR and basal L-selectin on monocytes revealed a similar trend of negative correlation to that for neutrophils ($R^2 = 0.29$, $p = 0.06$; Figure 2c).

Between 50 and 80% of naïve and between 50 and 90% of memory CD3-positive T lymphocyte cells reportedly express L-selectin [51]. Basal expression of L-selectin did not differ between the two disease conditions (Figure 2a). Furthermore, comparisons with clinical blood data revealed no association of L-selectin expression on lymphocytes with any of the parameters measured, including ESR (data not shown).

After stimulation with TNF-α, a rapid decrease in expression of L-selectin within the first 30 minutes was detected (Figure 2d). Although receptor cleavage seemed to occur to a greater extent in RA neutrophils than in controls, this was not significant. The response to stimulation with fMLP was essentially identical to that with TNF-α incubation (data not shown). There were no statistical differences between stimulators or treatment groups at any time point ($p > 0.05$). On stimulation with TNF-α or fMLP, monocytic L-selectin expression was also shed. There was no observable difference between the RA and the control response for either treatment. Lymphocytes did not alter their expression of L-selectin in response to TNF-α or fMLP in either treatment group ($p > 0.05$; data not shown).

Expression and regulation of CR3

Basal CR3 expression on neutrophils in patients with RA were no different from those in controls (Figure 3a). However, analysis of associations between clinical parameters of disease activity and basal CR3 expression revealed a trend towards a positive correlation between CR3 expression and ESR (Figure 3b). Analysis of CR3 expression on monocytes did not identify differences in baseline expression; neither was there any association with other indices of disease activity (Figure 3a, c, and data not shown).

In concordance with existing reports, the surface expression of CR3 on neutrophils increased after stimulation with either fMLP or TNF-α, but no difference was evident between control and RA populations (Figure 3c and data not shown). Examination of the TNF-α or fMLP-induced CR3 receptor upregulation on monocytes revealed no significant differences between the RA and control populations (data not shown).

Analysis of reactive oxygen species

Analysis of the intracellular release of ROS was determined with DHR-123. Purified neutrophils were incubated with DHR-123 before specific stimulation, and the median fluorescence intensity was determined. Analysis was completed at the maximum detectable fluorescence intensity, which was 45 minutes after stimulation. Figure 4 demonstrates the maximal ROS generation by neutrophils from IgG Fc receptor engagement with the use of different stimuli, in control and RA subjects. Specific ligation of either FcγRIIa or FcγRIIb produced an observable increase in ROS, although this reached statistical significance only for FcγRIIa ligation in the control group, where ROS production was higher after FcγRIIa ligation, in comparison with FcγRIIb. Heterologous cross-linking of

Fc γ R1a and Fc γ R11b induces ROS production to a greater extent than engagement of either receptor alone (Figure 4). This is consistent with the current data demonstrating that heterotypic Fc γ R11b–Fc γ R1a co-ligation produces enhanced neutrophil activation in terms of phagocytosis, oxidative burst and release of granular enzymes [44,52]. In addition, HA1gG has maximal efficiency in producing ROS. This is probably due to spatial orientation of the HA1gG molecule, which favours clustering of a greater number of receptors on the cell. In these circumstances, the differential ROS generation between control and RA groups was not apparent.

Comparisons between the control and RA samples revealed that the resting generation of ROS by untreated cells was marginally higher in the RA population than in the controls, but this was not significant (data not shown). There was no difference in ROS generation as a result of single Fc γ R ligation between the two treatment groups. However, dual ligation of Fc γ R1a and Fc γ R11b resulted in an additive effect in control populations that was absent from the RA group ($p < 0.05$, unpaired *t*-test). This loss of ROS generation within the RA group was not correlated with age or with disease severity as measured by physician-assessed DAS 28 (data not shown). Furthermore, the sample size was insufficient to determine effects of gender on loss of ROS generation.

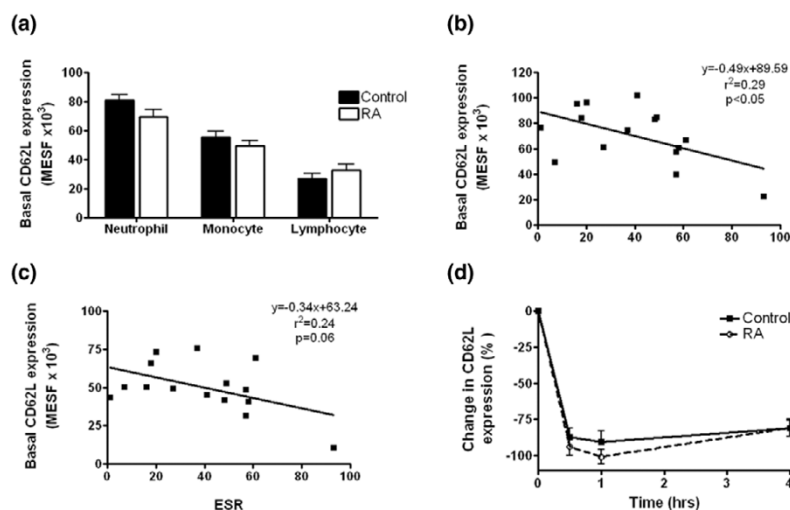
Discussion

We have demonstrated that there is a defect in the cooperative effect of Fc γ R1a and Fc γ R11b in mediating ROS

generation in neutrophils. This was not due to a change in receptor expression, because basal levels of both receptors were equivalent in control and RA populations, which is consistent with previous reports [51,52]. It is also unlikely that it results from an aberrant response in the direct downstream signalling pathways for each individual receptor. Because the efficacy of HA1gG-induced ROS was not altered, the disparities must lie in the conformational changes of the receptors during cross-linking, which results from antigen binding. The generation of ROS is pivotal in the efficient destruction of foreign material [53,54]. The reduction in ROS generation may therefore account in part for the increased susceptibility and morbidity associated with infection in RA [27,29,30,53]. However, the extent of this Fc γ R-dependent defect is limited because individuals with Fc γ R11b deficiency do not suffer from recurrent bacterial infections and because removal of the Fc γ R11b does not eliminate the phagocytic capacity and subsequent destruction of opsonised bacteria [20,55,56]. We suggest that, in cases where the pathogenic agonist is less efficient in the induction of cross-linking, this becomes an impeding factor in the generation of ROS.

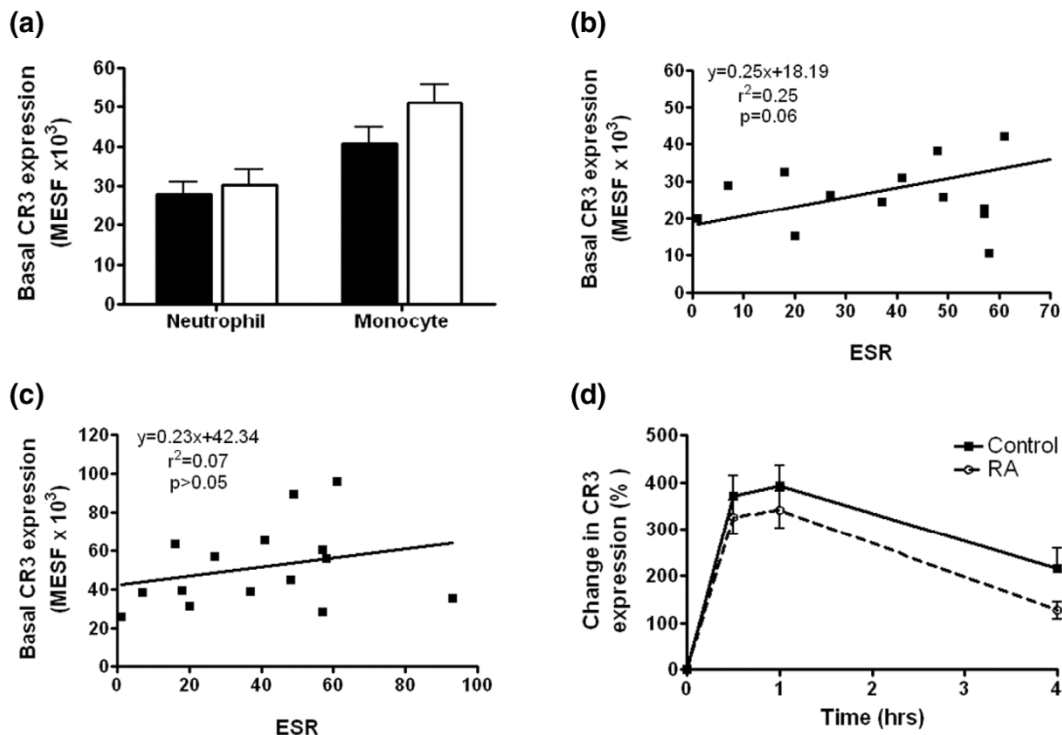
Published data on neutrophil Fc-mediated ROS generation are conflicting. We demonstrated that the efficacy of ROS generation by homotypic ligation did not differ between Fc γ R1a and Fc γ R11b, which is consistent with two other studies [17,38]. This is contrary to the work of Hundt and Schmidt [37] showing that Fc γ R11b induces a greater oxidative burst

Figure 2



Expression of L-selectin by rheumatoid and age/sex-matched control leucocytes. **(a)** Baseline expression of L-selectin on peripheral leucocytes in patients with rheumatoid arthritis (RA) and control volunteers. Correlation of neutrophil **(b)** and monocyte **(c)** L-selectin and erythrocyte sedimentation rate (ESR). Linear regression of the relationship between resting neutrophil L-selectin expression and the ESR showed a significant correlation. Equation statistics are presented in the graph. In addition, Pearson's correlation also confirmed this finding ($r = -0.54$, $p < 0.05$; $n = 15$). Trends were also shown between monocyte L-selectin expression and ESR ($0.1 > p > 0.05$). **(d)** Neutrophil L-selectin was shed rapidly on TNF- α stimulation. MESF, milliequivalents of soluble fluorescein.

Figure 3

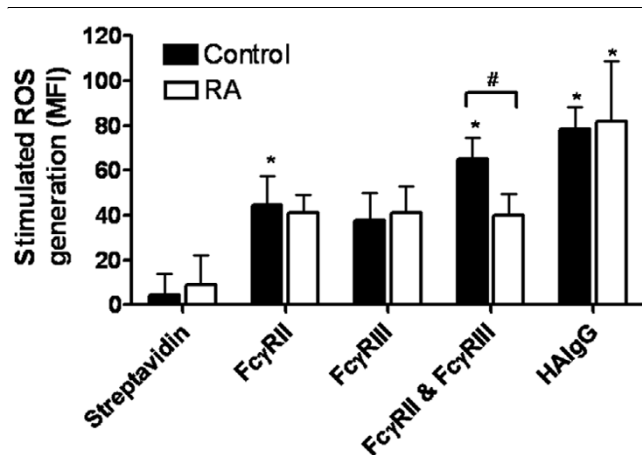


Expression of complement receptor type 3 (CR3) by rheumatoid and age/sex-matched control leucocytes. **(a)** Baseline expression of CR3 expression on peripheral leucocytes in Patients with rheumatoid arthritis and control volunteers. Correlation of neutrophil **(b)** and monocyte **(c)** CR3 and erythrocyte sedimentation rate (ESR). There was a trend for a positive correlation between neutrophil expression and ESR; however, this marginally failed to reach statistical significance ($p = 0.06$). **(d)** Neutrophil CR3 expression was upregulated in response to TNF- α . MESF, milliequivalents of soluble fluorescein.

than Fc γ R1a. This may be due to the high concentration of GAM used in their experiments and subsequent non-specific ligation, particularly because studies with smaller amounts of GAM do not show this difference in efficacy [38]. In our studies we generated biotinylated F(ab')₂ anti-Fc γ R1a and Fc γ R11b molecules and used streptavidin for cross-linking; the potential for non-specific ligation of receptors, which can occur when using a secondary IgG, was therefore eliminated. Initial optimisation studies in the work presented here did not demonstrate any increase in fluorescence with a concentration twofold higher for primary or secondary reagents (data not shown). Furthermore, the concentrations were comparable to those used in other assays, which activate neutrophils by specific ligation [15,17,44]. Aside from the controversy about the relative efficacy of Fc γ R11 and Fc γ R11b in ROS generation, early studies could not produce an Fc γ R11b-mediated oxidative burst [57,58]. These investigations used a different monoclonal antibody (CBL-FcR-gran-1) against Fc γ R11b in comparison with all other studies mentioned here (3g8). Antibodies 3g8 and Gran-1 recognise different epitopes within the ligand-binding site of Fc γ R11b [59]. This may result in differences in receptor aggregation, thereby affecting subsequent signalling transduction pathways.

Our analysis of cellular markers of activation, L-selectin and CR3, also suggest that the neutrophils of patients with RA in the periphery are activated before joint infiltration. Furthermore, the negative correlation between neutrophil L-selectin expression and ESR suggests that neutrophil activation increases with disease severity. The altered expression in adhesion molecules may account for the defective migratory capacity of neutrophils to inflammatory targets observed in patients with RA [60]. Although several studies have shown that L-selectin is lower on neutrophils from synovial fluid, there are fewer observations for neutrophils from peripheral blood. Three studies report no change; however, Bond and colleagues have shown a decreased level of L-selectin on circulating granulocytes [61-64]. Previous studies have also failed to determine a difference in neutrophil CR3 expression in peripheral blood in RA in comparison with controls; however, upregulation is widely reported in synovial neutrophils [61,63,65]. The disparity in the data probably arises from inter-patient variability, small sample size, and requirements for study recruitment, together with the use of cell separation techniques that downregulate L-selectin and upregulate CR3. In the studies presented here, neutrophils were stimulated with an optimum concentration of fMLP or TNF- α to examine

Figure 4



Stimulation of reactive oxygen species (ROS) in neutrophils by IgG Fc γ receptor engagement. Purified neutrophils were incubated with DHR-123 and stimulated with heat-aggregated IgG (HAIGG) or antibodies against IgG Fc γ receptors (Fc γ R) followed by streptavidin. Homologous cross-linking was completed by using iv.3-biotin (Fc γ RII) or 3g8-biotin (Fc γ RIII), and heterologous cross-linking by using both Fc γ RII and Fc γ RIII with streptavidin. Data are expressed at maximum fluorescence (45 minutes after stimulation). Experiments were performed in duplicate ($n = 7$). Comparisons between stimulations were completed by using a one-way analysis of variance with *post hoc* Bonferroni Dunn test. Significant differences from the streptavidin control are shown ($*p < 0.05$). Comparisons between rheumatoid arthritis and controls were performed by unpaired *t*-test ($\#p < 0.05$). MFI, median fluorescence intensity.

any differences in the shedding response of L-selectin. There was no difference in L-selectin shedding between RA and controls. However, further preliminary work has shown that the loss in receptor expression by TNF- α is dose-dependent and that neutrophils from patients with RA require a lower concentration of TNF- α for equivalent shedding than do those in control samples. An earlier study has shown that TNF receptor expression is equivalent in patients and controls, reducing the probability that this is a cause of the effect [66].

The studies presented here demonstrate that functional abnormalities exist in peripheral neutrophils from patients with RA. This defect resides in the capacity of neutrophils to generate ROS in response to cooperative ligation of Fc γ RIIIa and Fc γ RIIb. The decreased production of ROS is unrelated to the level of receptor expression. This, together with the altered expression of adhesion molecules, may account for the increase in susceptibility and morbidity to bacterial infections that exists in RA.

Conclusion

This study demonstrates that patients with active RA have an altered capacity of generating ROS in response to dual ligation of Fc γ RII and Fc γ RIIIb. This may be a compensatory mechanism to downregulate the response to self ICs, and may affect the response to bacterial infections.

Competing interests

The authors declare that they have no competing interests.

Authors' contributions

AMF co-designed the study, completed the experimental work and wrote the paper. PKW aided development of the reagents and co-designed the study. ASMJ contributed samples and discussion of the study. NJG co-designed the study, gave overall supervision and provided funding and editing of the paper. All authors read and approved the final manuscript.

Acknowledgements

This work was supported in part by grants from St Bartholomew's and the Royal London Charitable Foundation, London UK (NJG) and travelling fellowships from Boehringer Ingelheim Fonds, Germany, and Novartis UK (AMF).

References

- Blackburn WD Jr, Koopman WJ, Schrohenloher RE, Heck LW: **Induction of neutrophil enzyme release by rheumatoid factors: evidence for differences based on molecular characteristics.** *Clin Immunol Immunopathol* 1986, **40**:347-355.
- Pillinger MH, Abramson SB: **The neutrophil in rheumatoid arthritis.** *Rheum Dis Clin North Am* 1995, **21**:691-714.
- Robinson J, Watson F, Bucknall RC, Edwards SW: **Activation of neutrophil reactive-oxidant production by synovial fluid from patients with inflammatory joint disease. Soluble and insoluble immunoglobulin aggregates activate different pathways in primed and unprimed cells.** *Biochem J* 1992, **286**:345-351.
- Fanger MW, Shen L, Graziano RF, Guyre PM: **Cytotoxicity mediated by human Fc receptors for IgG.** *Immunol Today* 1989, **10**:92-99.
- Ravetch JV, Clynes RA: **Divergent roles for Fc receptors and complement *in vivo*.** *Annu Rev Immunol* 1998, **16**:421-432.
- Edwards SW, Hallett MB: **Seeing the wood for the trees: the forgotten role of neutrophils in rheumatoid arthritis.** *Immunol Today* 1997, **18**:320-324.
- Kitsis EA, Weissmann G, Abramson SB: **The prostaglandin paradox: additive inhibition of neutrophil function by aspirin-like drugs and the prostaglandin E1 analog misoprostol.** *J Rheumatol* 1991, **18**:1461-1465.
- Wipke BT, Allen PM: **Essential role of neutrophils in the initiation and progression of a murine model of rheumatoid arthritis.** *J Immunol* 2001, **167**:1601-1608.
- Deo YM, Graziano RF, Repp R, van de Winkel JG: **Clinical significance of IgG Fc receptors and Fc γ R-directed immunotherapies.** *Immunol Today* 1997, **18**:127-135.
- Ravetch JV: **Fc receptors.** *Curr Opin Immunol* 1997, **9**:121-125.
- Henson PM, Johnston RB Jr: **Tissue injury in inflammation. Oxidants, proteinases, and cationic proteins.** *J Clin Invest* 1987, **79**:669-674.
- Malech HL, Gallin JI: **Current concepts: immunology. Neutrophils in human diseases.** *N Engl J Med* 1987, **317**:687-694.
- Daeron M: **Fc receptor biology.** *Annu Rev Immunol* 1997, **15**:203-234.
- van de Winkel JG, Capel PJ: **Human IgG Fc receptor heterogeneity: molecular aspects and clinical implications.** *Immunol Today* 1993, **14**:215-221.
- Kimberly RP, Ahlstrom JW, Click ME, Edberg JC: **The glycosyl phosphatidylinositol-linked Fc γ RIIIbPMN mediates transmembrane signaling events distinct from Fc γ RII.** *J Exp Med* 1990, **171**:1239-1255.
- Brunkhorst BA, Strohmeier G, Lazzari K, Weil G, Melnick D, Fleit HB, Simons ER: **Differential roles of Fc γ RII and Fc γ RIII in immune complex stimulation of human neutrophils.** *J Biol Chem* 1992, **267**:20659-20666.
- Crockett-Torabi E, Fantone JC: **Soluble and insoluble immune complexes activate human neutrophil NADPH oxidase by distinct Fc γ receptor-specific mechanisms.** *J Immunol* 1990, **145**:3026-3032.

18. Robinson JJ, Watson F, Bucknall RC, Edwards SW: Role of Fcγ receptors in the activation of neutrophils by soluble and insoluble immunoglobulin aggregates isolated from the synovial fluid of patients with rheumatoid arthritis. *Ann Rheum Dis* 1994, **53**:515-520.
19. Tosi MF, Berger M: Functional differences between the 40 kDa and 50 to 70 kDa IgG Fc receptors on human neutrophils revealed by elastase treatment and antireceptor antibodies. *J Immunol* 1988, **141**:2097-2103.
20. Fossati G, Moots RJ, Bucknall RC, Edwards SW: Differential role of neutrophil Fcγ receptor IIIB (CD16) in phagocytosis, bacterial killing, and responses to immune complexes. *Arthritis Rheum* 2002, **46**:1351-1361.
21. Salmon JE, Edberg JC, Kimberly RP: Fcγ receptor III on human neutrophils. Allelic variants have functionally distinct capacities. *J Clin Invest* 1990, **85**:1287-1295.
22. Bredius RG, Fijen CA, De HM, Kuijper EJ, Weening RS, van de Winkel JG, Out TA: Role of neutrophil FcγRIIIa (CD32) and FcγRIIIb (CD16) polymorphic forms in phagocytosis of human IgG1- and IgG3-opsonized bacteria and erythrocytes. *Immunology* 1994, **83**:624-630.
23. Bux J, Stein EL, Bierling P, Fromont P, Clay M, Stroncek D, Santoso S: Characterization of a new alloantigen (SH) on the human neutrophil Fcγ receptor IIIB. *Blood* 1997, **89**:1027-1034.
24. Radstake TR, Petit E, Pierlot C, van de Putte LB, Cornelis F, Barera P: Role of Fcγ receptors IIA, IIIB, and IIIB in susceptibility to rheumatoid arthritis. *J Rheumatol* 2003, **30**:926-933.
25. Chen JY, Wang CM, Wu JM, Ho HH, Luo SF: Association of rheumatoid factor production with FcγRIIIa polymorphism in Taiwanese rheumatoid arthritis. *Clin Exp Immunol* 2006, **144**:10-16.
26. Kyogoku C, Tsuchiya N, Matsuta K, Tokunaga K: Studies on the association of Fcγ receptor IIA, IIB, IIIA and IIIB polymorphisms with rheumatoid arthritis in the Japanese: evidence for a genetic interaction between HLA-DRB1 and FCGR3A. *Genes Immun* 2002, **3**:488-493.
27. Hughes LB, Criswell LA, Beasley TM, Edberg JC, Kimberly RP, Moreland LW, Seldin MF, Bridges SL: Genetic risk factors for infection in patients with early rheumatoid arthritis. *Genes Immun* 2004, **5**:641-647.
28. Doran MF, Crowson CS, Pond GR, O'Fallon WM, Gabriel SE: Predictors of infection in rheumatoid arthritis. *Arthritis Rheum* 2002, **46**:2294-2300.
29. Symmons DP: Mortality in rheumatoid arthritis. *Br J Rheumatol* 1988, **27**(Suppl 1):44-54.
30. Carmona L, Hernandez-Garcia C, Vadillo C, Pato E, Balsa A, Gonzalez-Alvaro I, Belmonte MA, Tena X, Sanmarti R: Increased risk of tuberculosis in patients with rheumatoid arthritis. *J Rheumatol* 2003, **30**:1436-1439.
31. Aplin AE, Howe A, Alahari SK, Juliano RL: Signal transduction and signal modulation by cell adhesion receptors: the role of integrins, cadherins, immunoglobulin-cell adhesion molecules, and selectins. *Pharmacol Rev* 1998, **50**:197-263.
32. Fernandez-Segura E, Garcia JM, Campos A: Topographic distribution of CD18 integrin on human neutrophils as related to shape changes and movement induced by chemotactic peptide and phorbol esters. *Cell Immunol* 1996, **171**:120-125.
33. Lundahl J, Hed J: Differences in altered expression of L-selectin and Mac-1 in monocytes and neutrophils. *Inflammation* 1994, **18**:67-76.
34. Wollheim FA: Markers of disease in rheumatoid arthritis. *Curr Opin Rheumatol* 2000, **12**:200-204.
35. Borawski J, Mysliwiec M: The hematocrit-corrected erythrocyte sedimentation rate can be useful in diagnosing inflammation in hemodialysis patients. *Nephron* 2001, **89**:381-383.
36. Wolfe F: Comparative usefulness of C-reactive protein and erythrocyte sedimentation rate in patients with rheumatoid arthritis. *J Rheumatol* 1997, **24**:1477-1485.
37. Hundt M, Schmidt RE: The glycosylphosphatidylinositol-linked Fcγ receptor III represents the dominant receptor structure for immune complex activation of neutrophils. *Eur J Immunol* 1992, **22**:811-816.
38. Lund-Johansen F, Olweus J, Symington FW, Ari A, Thompson JS, Vilella R, Skubitz K, Horejsi V: Activation of human monocytes and granulocytes by monoclonal antibodies to glycosylphosphatidylinositol-anchored antigens. *Eur J Immunol* 1993, **23**:2782-2791.
39. Arnett FC, Edworthy SM, Bloch DA, McShane DJ, Fries JF, Cooper NS, Healey LA, Kaplan SR, Liang MH, Luthra HS: The American Rheumatism Association 1987 revised criteria for the classification of rheumatoid arthritis. *Arthritis Rheum* 1988, **31**:315-324.
40. Guyre PM, Graziano RF, Vance BA, Morganelli PM, Fanger MW: Monoclonal antibodies that bind to distinct epitopes on FcγRI are able to trigger receptor function. *J Immunol* 1989, **143**:1650-1655.
41. Massari P, Ho Y, Wetzler LM: Neisseria meningitidis porin PorB interacts with mitochondria and protects cells from apoptosis. *Proc Natl Acad Sci USA* 2000, **97**:9070-9075.
42. Henderson LM, Chappell JB: Dihydrorhodamine 123: a fluorescent probe for superoxide generation? *Eur J Biochem* 1993, **217**:973-980.
43. Royall JA, Ischiropoulos H: Evaluation of 2',7'-dichlorofluorescein and dihydrorhodamine 123 as fluorescent probes for intracellular H₂O₂ in cultured endothelial cells. *Arch Biochem Biophys* 1993, **302**:348-355.
44. Vosseveld PJ, Kessler J, von dem Borne AE, Roos D, Verhoeven AJ: Heterotypic FcγR clusters evoke a synergistic Ca²⁺ response in human neutrophils. *J Biol Chem* 1995, **270**:10671-10679.
45. Abid S, Zili M, Bouzid L, Kibech R, Foudhaili N, Joudi K, Ren RZ, Abdennaji B, Mrad R, Boukef K: Gene frequencies of human neutrophil antigens in the Tunisian blood donors and Berbers. *Tissue Antigens* 2001, **58**:90-92.
46. Kuwano ST, Bordin JO, Chiba AK, Mello AB, Figueiredo MS, Vieira-Filho JP, Fabron A Jr, Kerbauy J: Allelic polymorphisms of human Fcγ receptor IIa and Fcγ receptor IIIb among distinct groups in Brazil. *Transfusion* 2000, **40**:1388-1392.
47. Lin M, Chen CC, Wang CL, Lee HL: Frequencies of neutrophil-specific antigens among Chinese in Taiwan. *Vox Sang* 1994, **66**:247.
48. Ohto H, Matsuo Y: Neutrophil-specific antigens and gene frequencies in Japanese. *Transfusion* 1989, **29**:654.
49. Torio A, Marin L, Muro M, varez-Lopez MR, Garcia-Alonso AM: Determination of NA gene frequencies in the Spanish population by polymerase chain reaction with sequence-specific primers. *Eur J Immunogenet* 1998, **25**:393-394.
50. Pricop L, Redecha P, Teillaud JL, Frey J, Fridman WH, Sautes-Fridman C, Salmon JE: Differential modulation of stimulatory and inhibitory Fcγ receptors on human monocytes by Th1 and Th2 cytokines. *J Immunol* 2001, **166**:531-537.
51. De MM, Modesti M, Profeta VF, Tullio M, Loreto MF, Ginaldi L, Quaglino D: CD50 and CD62L adhesion receptor expression on naive (CD45RA⁺) and memory (CD45RO⁺) T lymphocytes in the elderly. *Pathobiology* 2000, **68**:245-250.
52. Edberg JC, Kimberly RP: Modulation of Fcγ and complement receptor function by the glycosyl-phosphatidylinositol-anchored form of FcγRIII. *J Immunol* 1994, **152**:5826-5835.
53. Babior BM, Curnutte JT, Kipnes RS: Biological defense mechanisms. Evidence for the participation of superoxide in bacterial killing by xanthine oxidase. *J Lab Clin Med* 1975, **85**:235-244.
54. Reeves EP, Lu H, Jacobs HL, Messina CG, Bolsover S, Gabella G, Potma EO, Warley A, Roes J, Segal AW: Killing activity of neutrophils is mediated through activation of proteases by K⁺ flux. *Nature* 2002, **416**:291-297.
55. De HM, Kleijer M, van ZR, Roos D, von dem Borne AE: Neutrophil FcγRIIIb deficiency, nature, and clinical consequences: a study of 21 individuals from 14 families. *Blood* 1995, **86**:2403-2413.
56. Fromont P, Bettaieb A, Skouri H, Floch C, Poulet E, Duedari N, Bierling P: Frequency of the polymorphonuclear neutrophil Fcγ receptor III deficiency in the French population and its involvement in the development of neonatal alloimmune neutropenia. *Blood* 1992, **79**:2131-2134.
57. Huizinga TW, van KF, Koenderman L, Dolman KM, von dem Borne AE, Tetteroo PA, Roos D: The 40-kDa Fcγ receptor (FcRII) on human neutrophils is essential for the IgG-induced respiratory burst and IgG-induced phagocytosis. *J Immunol* 1989, **142**:2365-2369.
58. Huizinga TW, Dolman KM, van der Linden NJ, Kleijer M, Nuijens JH, von dem Borne AE, Roos D: Phosphatidylinositol-linked FcRIII mediates exocytosis of neutrophil granule proteins, but does

- not mediate initiation of the respiratory burst. *J Immunol* 1990, **144**:1432-1437.
59. Tamm A, Schmidt RE: **The binding epitopes of human CD16 (Fc γ RIII) monoclonal antibodies. Implications for ligand binding.** *J Immunol* 1996, **157**:1576-1581.
60. Aglas F, Hermann J, Egger G: **Abnormal directed migration of blood polymorphonuclear leukocytes in rheumatoid arthritis. Potential role in increased susceptibility to bacterial infections.** *Mediators Inflamm* 1998, **7**:19-23.
61. De Clerck LS, De Gendt CM, Bridts CH, Van ON, Stevens WJ: **Expression of neutrophil activation markers and neutrophil adhesion to chondrocytes in rheumatoid arthritis patients: relationship with disease activity.** *Res Immunol* 1995, **146**:81-87.
62. Honig M, Peter HH, Jantschke P, Grunert F: **Synovial PMN show a coordinated up-regulation of CD66 molecules.** *J Leukoc Biol* 1999, **66**:429-436.
63. Humbria A, az-Gonzalez F, Campanero MR, Arroyo AG, Laffon A, Gonzalez-Amaro R, Sanchez-Madrid F: **Expression of L-selectin, CD43, and CD44 in synovial fluid neutrophils from patients with inflammatory joint diseases. Evidence for a soluble form of L-selectin in synovial fluid.** *Arthritis Rheum* 1994, **37**:342-348.
64. Bond A, Hay FC: **L-selectin expression on the surface of peripheral blood leucocytes from rheumatoid arthritis patients is linked to disease activity.** *Scand J Immunol* 1997, **46**:312-316.
65. Jones J, Laffafian I, Cooper AM, Williams BD, Morgan BP: **Expression of complement regulatory molecules and other surface markers on neutrophils from synovial fluid and blood of patients with rheumatoid arthritis.** *Br J Rheumatol* 1994, **33**:707-712.
66. Lopez S, Halbwachs-Mecarelli L, Ravaud P, Bessou G, Dougados M, Porteu F: **Neutrophil expression of tumour necrosis factor receptors (TNF-R) and of activation markers (CD11b, CD43, CD63) in rheumatoid arthritis.** *Clin Exp Immunol* 1995, **101**:25-32.