

REVIEW

The role of dendritic cells in the pathogenesis of systemic lupus erythematosus

Justin H Fransen¹, Johan van der Vlag¹, Jurjen Ruben¹, Gosse J Adema², Jo H Berden¹ and Luuk B Hilbrands^{*1}

Abstract

The etiology of the autoimmune disease systemic lupus erythematosus is not known, but aberrant apoptosis and/or insufficient clearance of apoptotic material have been assigned a pivotal role. During apoptosis, nucleosomes and several endogenous danger-associated molecular patterns are incorporated in blebs. Recent data indicate that apoptotic blebs induce maturation of myeloid dendritic cells, resulting in IL-17 production by T cells. In this review we summarize current knowledge on the role of dendritic cells in the pathogenesis of systemic lupus erythematosus with special emphasis on the uptake of apoptotic blebs by dendritic cells, and the subsequent induction of Th17 cells.

Introduction

Systemic lupus erythematosus (SLE) is a complex, multi-organ, autoimmune disease. It is characterized by an autoimmune response directed against multiple nuclear components, of which the nucleosome is the major autoantigen [1]. SLE autoantigens cluster in blebs formed at the surface of apoptotic cells [2]. The exact etiology of SLE is still unclear, although insufficient clearance of apoptotic material and/or aberrant apoptosis, in combination with a susceptible genetic background, have been suggested to be involved in SLE development and progression [3,4]. Multiple SLE-associated autoreactive antibodies, which are found in both SLE patients and lupus mouse models, recognize apoptosis-induced modifications of nuclear autoantigens. It has been demonstrated that the pathogenic autoantibodies result from CD4⁺ T cell-dependent immune responses. Activation

of the autoimmune T helper (Th) cells requires immunogenic antigen presentation by dendritic cells (DCs) [5]. Here, we provide an overview of the role of DCs and their response to apoptotic material in the pathogenesis of SLE.

Dendritic cells

At the interface of innate and adaptive immunity, DCs play a pivotal role in the regulation of immune responses. DCs are distributed throughout the body for optimal antigen capture and, as the most potent antigen presenting cells, they are well suited to activate (naïve) T cells. On the other hand, immature DCs can promote epitope-specific peripheral tolerance by presenting antigens acquired from dying cells without co-stimulation of T cells. This results in anergy or deletion of self-reactive T cells and the development of regulatory T cells (Tregs) [5]. Depletion of DCs in mice results in breaking of self-tolerance of CD4 T cells and induction of spontaneous autoimmunity [6], reflecting the importance of DCs in peripheral tolerance. On the other hand, inhibition of apoptosis in mouse DCs by Bim-deficiency leads to overstimulation of T cells by DCs. This over-activation of T cells then results in breakage of self-tolerance and induction of autoimmunity in mice [7], indicating the ability of DCs to induce autoimmune responses. When an antigen is perceived by DCs as being harmful, T cells recognizing the antigen will be activated. In order to activate T cells, DCs undergo a process called maturation, migrate to secondary lymphoid organs, and present antigens in an immunogenic context to T cells. During the process of maturation, DCs are transformed from predominant antigen-capturing cells towards antigen-presenting cells. DCs thereby increase the expression of antigen-loaded major histocompatibility complex (MHC) molecules, upregulate the expression of co-stimulatory molecules (that is, CD86, CD40) and secrete pro-inflammatory cytokines and chemokines, such as IL-6 and TNF- α [5]. Furthermore, the signature of the secreted cytokines and the molecules expressed on the cell surface (for example, OX40 ligand (OX40L) or ICOS-1 (inducible costimulator-1)) determine the type of T cell polarization, for example, Th1, Th2, Th17, or Treg [8].

*Correspondence: l.hilbrands@nier.umcn.nl

¹Nephrology Research Laboratory, Nijmegen Centre for Molecular Life Sciences, Department of Nephrology, Radboud University Nijmegen Medical Centre, P.O. Box 9101, 6500 HB Nijmegen, The Netherlands

Full list of author information is available at the end of the article

DCs can be divided into several subsets, which display different characteristics and tissue distributions. Discussing all possible DC subsets is beyond the scope of this review, but currently two main types of DC are known: myeloid DCs (mDCs), and plasmacytoid DCs (pDCs) [9,10]. The number of DCs circulating in blood is relatively low; therefore, *in vitro* cultured DCs are often used in studies. Human mDCs are predominantly generated by culturing monocytes in the presence of granulocyte-macrophage colony-stimulating factor (GM-CSF) and IL-4; these cytokines are also mainly used to generate mDCs from mouse bone marrow. pDCs were previously isolated from blood, but nowadays they can also be generated after culturing human monocytes or mouse bone marrow in the presence of Flt-3 ligand (Flt-3L). An important characteristic of mDCs in the context of SLE is their ability to take up apoptotic and necrotic cell material [9] and present this to T cells [11]. In contrast to mDCs, pDCs are unable to ingest uncomplexed apoptotic and necrotic material [9]. However, when apoptotic material is in complex with (auto)antibodies, pDCs ingest these complexes. pDCs can produce high amounts of type I IFN (mainly IFN- α) and were, therefore, originally referred to as the natural interferon-producing cells [12]. Interestingly, high levels of IFN- α are found in SLE patients, suggesting the involvement of pDCs in the pathogenesis of SLE [13].

The activation and maturation of DCs can be accomplished by numerous agents, such as microorganisms, immune complexes, various cells of the innate and adaptive immune system, dying cells, or material derived from dying cells [5,8,14]. In the case of microorganisms, pathogen-associated molecular patterns (PAMPs) are recognized by DCs via pathogen recognition receptors (PRRs). These PRRs comprise Toll-like receptors (TLRs), C-type lectin receptors, the intracellular RIG-I-like receptors and NOD-like receptors, of which the TLRs have been studied in most detail [10,14]. However, TLRs are not solely stimulated by PAMPs, but also by endogenous TLR ligands, which can be released from dying cells and are referred to as danger-associated molecular patterns (DAMPs). Expression of the PRRs varies between the DC types and subsets, and also differs between species. With regard to TLRs, mDCs express most of the known TLRs, whereas pDCs predominantly express TLR7 and 9. Currently, the involvement of TLR triggering by DAMPs in auto-immune diseases, and SLE in particular, is an area of active research [14]. We will address this topic in more detail below.

Insufficient clearance of apoptotic material in SLE

An increased load of apoptotic material has been related to the induction of SLE and the disease severity [3,4]. This increased load of apoptotic material can, in theory,

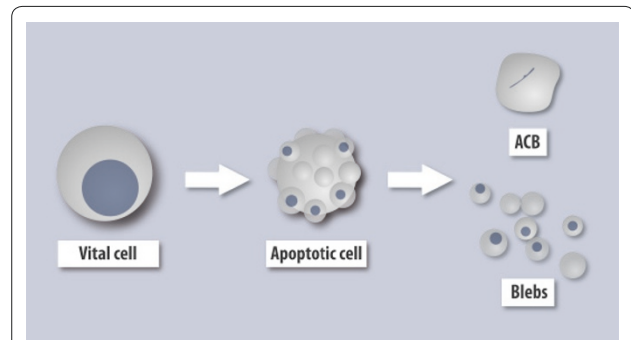


Figure 1. Scheme defining apoptotic blebs and apoptotic cell bodies. From left to right are a healthy cell, an actively blebbing apoptotic cell, and an apoptotic cell body (ACB), remaining after the cell has finished blebbing, with separated apoptotic blebs (blebs) [27].

result from aberrant apoptosis and/or insufficient clearance of apoptotic cells [15,16]. While some limited data support an increased rate of apoptosis in SLE in humans, animal models have shown that aberrant apoptosis, as in mice with defective Fas (*lpr*) or Fas ligand (*gld*), results in lymphoproliferation and autoimmunity with SLE-like features. Deregulated apoptosis ultimately leads to increased amounts of apoptotic cells at the wrong time or in a wrong micro-environment. However, an increasing body of evidence indicates that insufficient clearance is probably a more important cause of the increased load of apoptotic material in SLE.

In contrast to the normal situation, where early apoptotic cells are swiftly removed by phagocytosis, insufficient clearance of apoptotic cells and material may result in accumulation of these in tissues, and apoptosis can then proceed to secondary necrosis and to the release of inflammatory stimuli.

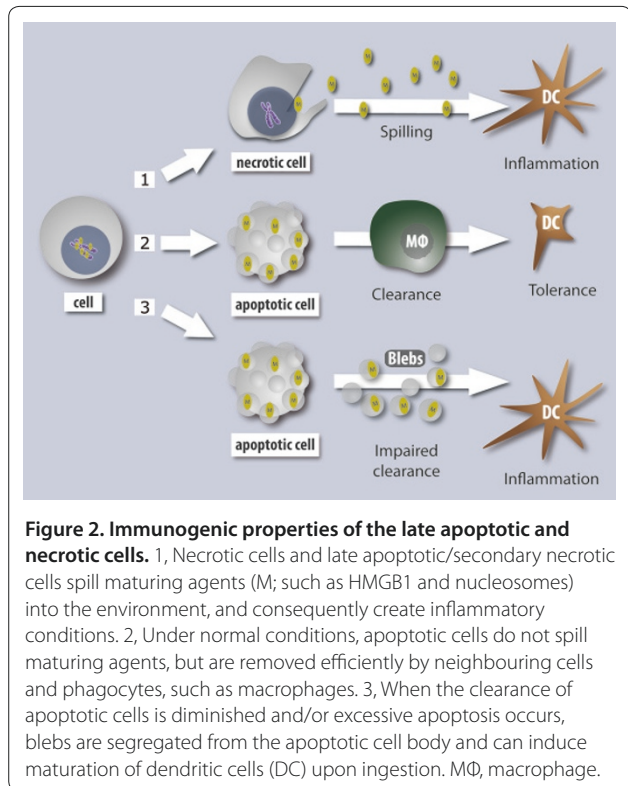
Apoptotic blebs, containing clustered autoantigens, are formed at the surface of the dying cell. As long as cells are not cleared, apoptosis continues and the formed blebs will separate from the apoptotic cell. We define an apoptotic cell body as an apoptotic cell that has finished blebbing (Figure 1). In SLE patients, several abnormalities have been found that can result in decreased clearance of apoptotic cells and the release of blebs and chromatin, such as complement defects [17], low levels of the pentraxin C-reactive protein [18], and reduced levels and activity of DNase I in serum [19]. The association between factors involved in reduced apoptotic cell clearance and SLE has also been found in animal models of SLE. In mice, the absence or decreased levels of complement component 1q (C1q), serum amyloid P component, DNase I, c-mer, or milk fat globule epidermal growth factor 8 results in lupus-like manifestations [16].

Insufficient clearance of apoptotic material results in the release of modified autoantigens that can illicit an immune response

Insufficient clearance of apoptotic material does not directly provide an explanation for the pathogenesis of SLE, since tolerance towards self is not automatically affected. The immune system is constantly in contact with numerous self-antigens, and it harbors multiple mechanisms to prevent autoimmunity [5,20,21]. Yet, one can imagine two pathways leading to an immune response against self-antigens. First, self is presented in an immunogenic context by antigen-presenting cells - for example, DCs - to auto-reactive T cells that have escaped central and peripheral tolerance mechanisms. The activated T cells provide the help needed for the subsequent activation of autoreactive B cells presenting the self epitopes. Second, modified or cryptic self is presented in an immunogenic context by DCs to T cells. When B cells ingest modified self that is recognized by their B cell receptor, they will present the peptides derived from this material. The activated T cells recognizing modified peptides can provide the help necessary for the activation of these B cells, resulting in the production of antibodies directed towards modified self. Because the tolerance mechanisms for B cells are less stringent than those for T cells, natural autoreactive B cells specific for unmodified parts of self-antigens are present. In SLE patients, this fraction of autoreactive B cells is probably even larger than in healthy individuals [22]. Since these B cells can present peptides derived from the modified as well as the unmodified parts of the ingested antigen, they can receive help from activated T cells recognizing any one of these peptides. This mechanism of epitope spreading will ultimately result in the activation of various autoreactive T and B cells. We favor an important contribution of this second pathway, where the initial response is directed towards modified self, since it does not require the failure of physiological tolerance mechanisms. Experimental evidence for the involvement of modified self is found in the specificity of autoantibodies that are found in SLE patients. Antibodies from these patients recognize self-antigens that are modified during the process of apoptosis. This is exemplified in one of our own studies showing autoantibodies recognizing apoptosis-modified histone H4 [23].

Immunogenic presentation of (modified) autoantigens by matured dendritic cells

mDCs are excellent phagocytes of apoptotic material and, after maturation, are the most potent antigen-presenting cells for the activation of (naïve) T cells [5,11]. Maturation of DCs can be induced by ligation of CD40 and by a diverse range of PAMPs, which are recognized by the DCs via TLRs and other PRRs. However, in addition to



exogenous TLR ligands, more and more endogenous ligands, or DAMPs, have been identified [14,24]. When apoptotic cells are not swiftly removed, they release blebs and enter a late apoptotic stage, which is also called secondary necrosis. In this situation there is a huge spill of DAMPs, as in primary necrosis (Figure 2). As outlined below, there is evidence that these DAMPs, as well as apoptotic blebs and modified autoantigens, are able to induce maturation of DCs. When apoptotic T cells are captured by DCs, the expression level of CD40 ligand (CD40L), which is increased by activating stimuli, affects the maturation of DCs [25,26]. Furthermore, the level of maturation of DCs also depends on the amount of apoptotic material to which they are exposed [27,28]. The final common pathway of these mechanisms is that in conditions of disturbed apoptosis and/or insufficient clearance, the apoptotic (modified) antigens will be presented in a more immunogenic way by DCs to T cells. A well known endogenous danger signal is the high-mobility group box 1 protein (HMGB1), which can activate DCs via TLR2, TLR4 and the receptor for advanced glycation end products (RAGE) [29]. HMGB1 was identified as the factor in HMGB1-nucleosome complexes from apoptotic cells that induced maturation of DCs via TLR2. In contrast to nucleosomes from normal cells, apoptotic nucleosomes induced autoantibody production in normal mice [30]. Other endogenous

ligands for TLR2 and TLR4 are certain heat-shock proteins and heparan sulfate [14]. Nucleic acids are endogenous ligands for the endosomally located TLR3, 7, 8, and 9. Double- and single-stranded RNA induce maturation of DCs through TLR3 and TLR7/8, respectively, while CpG containing double-stranded DNA is a ligand for TLR9. When DNA-containing chromatin is bound to autoantibodies, the immune complex can enter the endosome via Fc receptor-mediated uptake and thus activate DCs in a TLR9-dependent manner [31,32]. However, a TLR-9-independent activation of mDCs by chromatin-immunoglobulin complexes or nucleosomes has also been described [23,32,33]. We have shown that nucleosomes containing apoptotic histone modifications are far more potent in inducing maturation of mouse mDCs than unmodified nucleosomes [23]. Notably, there can be an interaction between the various pathways of DC activation by endogenous ligands, since an essential role for HMGB1 and RAGE was demonstrated in TLR9-dependent activation of plasmacytoid DCs and B cells [34]. It was recently discovered that DAMPs can also ligate CD24, which binds to Siglec G (mouse) or Siglec 10 (human), and thereby repress the pro-inflammatory response [35]. This suggests that the response to DAMPs depends on the balance between positive and negative signaling pathways. In this respect it is interesting that a polymorphism in human CD24 is associated with susceptibility to autoimmune diseases, including SLE [36].

We recently found that apoptotic blebs can induce maturation of mouse mDCs with the production of high amounts of IL-6 [27]. This effect was not observed with apoptotic cell bodies, the remainder of the dying cell after blebbing has finished. Interestingly, many of the potential endogenous ligands that can activate DCs, including RNA, DNA, and HMGB1, are found in blebs [37,38]. In addition, HMGB1 remains attached to the nucleosomes that are released from late apoptotic cells [30]. Taken together, the disturbed clearance of apoptotic cells leads to an accumulation of blebs with immunogenic modification of autoantigens. The simultaneous presence of endogenous danger signals and possibly a deficiency of regulatory pathways will enhance the ability of DCs to initiate an immune response to (modified) autoantigens.

The important role of DCs presenting apoptotic material in the pathogenesis of SLE is illustrated by studies showing that administration of mDCs loaded with apoptotic or necrotic cells can induce the formation of antinuclear antibodies in normal mice and in lupus mice [39,40]. Furthermore, vaccination with these DCs in lupus mice increased the disease severity [39-41].

The involvement of TLRs in the pathogenesis of SLE is supported by the observation that lupus-prone mice deficient in MyD88, a critical adaptor in most TLR signaling, did not develop autoimmune nephritis [42].

Accordingly, lupus-prone mice that are deficient in SigIRR, a negative regulator in TLR signaling, show accelerated disease progression [43]. In TLR9-deficient lupus-prone mice, the generation of anti-DNA and anti-chromatin autoantibodies was impaired [44], which was, however, dependent on the genetic background. Furthermore, a protective effect of TLR9 signaling has also been described in animal models [45]. In humans, an association between genetic variation in TLR9 and SLE susceptibility could not be demonstrated [46]. The involvement of TLR7 signaling in SLE pathogenesis is especially evident from mouse studies. The generation of autoantibodies recognizing RNA-containing antigens was shown to be TLR7 dependent [45]. Furthermore, the RNA component of the Sm/RNP (Smith antigen/small nuclear ribonucleoproteins) and SS-A 60 lupus autoantigens contributes to DC maturation *in vivo*, probably via a TLR7-dependent pathway [47]. Overexpression of TLR7 caused profound DC dysregulation, increased levels of proinflammatory cytokines, such as IL-6 and TNF- α , in sera, SLE autoantibody production and fatal systemic autoimmunity [48,49]. However, no evidence for increased TLR7 expression was found in SLE patients [50]. When signaling via TLR3, TLR7, and TLR9 was abolished simultaneously in lupus-prone mice, the production of antinuclear antibodies and disease manifestation were markedly reduced [51]. As proposed by Baccala and colleagues [52], the dependency on TLR signaling may vary with the phase of SLE development. The initiation phase might concern TLR-independent maturation of DCs by apoptotic material and associated nucleic acids. After the formation of autoantibodies an amplification phase can be initiated where Fc receptor-dependent uptake of nucleic-acid-containing immune complexes induces TLR-dependent maturation of DCs. Taken together, evidence for a role for TLRs in the pathogenesis of SLE is mainly derived from animal models, and the relevance in human lupus has still to be shown.

A Th17 polarizing effect of dendritic cells in SLE

As outlined above, the interaction between DCs loaded with antigens derived from apoptotic cells and naïve T cells can give rise to various responses of subpopulations of T cells. First, when immature DCs present self antigens in a tolerogenic way, autoreactive T cells are deleted or anergized, and regulatory T cells can be activated. The development of regulatory T cells largely depends on the presence of TGF- β . When mature DCs present antigens in an immunogenic way, cytotoxic T cells as well as helper T cells can be activated. Helper T cells have traditionally been divided into type 1 (Th1) and type 2 (Th2) subsets, and until recently many autoimmune diseases were associated with a Th1 type of autoimmune response [53]. However, recent data have clearly

demonstrated a crucial role for the IL-17 producing Th17 subset in autoimmune diseases [53]. For example, in contrast to the Th1-promoting cytokine IL-12, the Th17-promoting cytokine IL-23 is involved in joint destruction in a rheumatoid arthritis model. Blocking IL-17 with a monoclonal antibody decreased intestinal inflammation significantly in a mouse model for inflammatory bowel disease [53]. In mice, both Th17 and Tregs require TGF- β for their development. However, in the presence of IL-6 the development of Tregs is decreased, and their suppressive function is inhibited [54], whereas the combination of IL-6 and TGF- β is required for Th17 development [53]. Furthermore, IL-23 and IL-21 mediate the efficient expansion of the Th17 subset [53]. In humans, the development of Th17 cells appears to be different from mice, although there is no consensus when comparing various studies. Several studies using human cells demonstrated that as well as IL-6 and TGF- β , Th17 cell activation and differentiation can involve IL-1 β , IL-21, and IL-23 [53]. Compared to other autoimmune diseases, little is yet known about the role and involvement of Th17 cells in SLE. However, there are several indications that Th17 cells and cytokines involved in activation and expansion of these cells are important. For instance, hyperproduction of IL-17 and IL-23 was observed in SLE patients [55]. Besides producing IFN- γ , expanded double negative T cells from SLE patients were found to produce significant amounts of IL-17. These double negative IL-17-producing T cells were shown to infiltrate kidneys of lupus patients with nephritis [56]. In addition, increased numbers of Th17 cells are associated with disease flares of SLE. During these flares the Treg population was contracted [57]. Lupus mice deficient in TNF receptor 1 and 2 develop accelerated lupus via a Th17-associated pathway [58]. Furthermore, IL-21 signaling was shown to be important in disease pathogenesis in lupus-prone mice [59]. Effective peptide tolerance therapy in lupus mice was associated with reduced numbers of Th17 cells and expansion of Tregs. DCs from tolerized mice, especially pDCs, were altered and produced increased levels of TGF- β and decreased levels of IL-6 after stimulation with nucleosomes, a condition favoring the expansion of Tregs [60]. In conclusion, several lines of evidence support that Th17 cells and related cytokines are important in the pathogenesis of SLE.

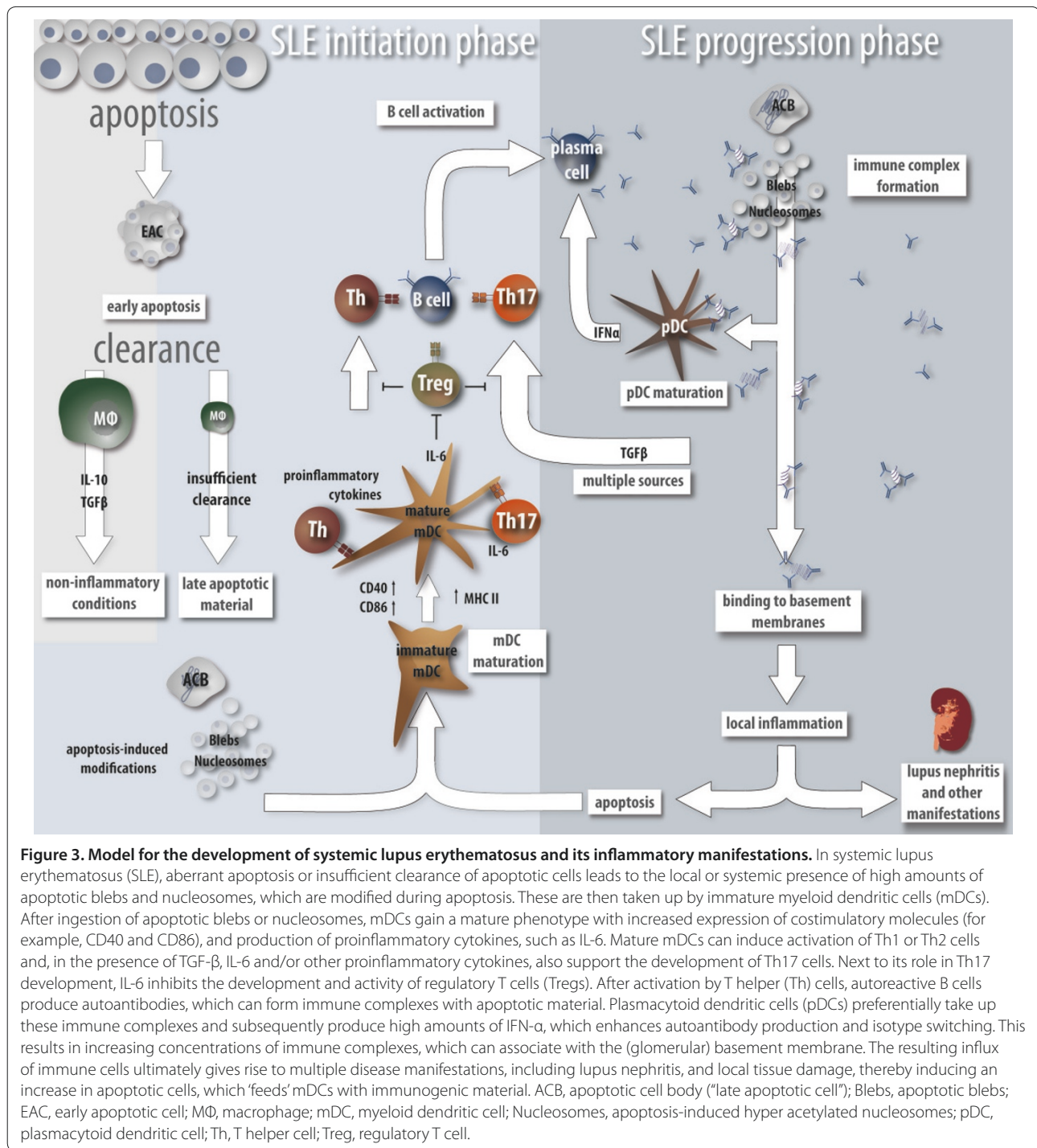
As described above, mDCs that are co-cultured with nucleosomes, nucleosomes modified during apoptosis, or apoptotic blebs gain a mature phenotype and produce high concentrations of IL-6. In addition, we found that when mouse mDCs matured by apoptotic blebs are used as stimulator cells in an allogeneic mixed leukocyte reaction, they induce IL-17 production by responder splenocytes [27]. This suggests that the TGF- β -facilitated induction of Tregs under non-inflammatory conditions

can be diverted to Th17 activation and development when mDCs produce high levels of IL-6 after interaction with nucleosomes or blebs released from apoptotic cells.

Conclusion

The etiology of SLE is multifactorial, with evidence for the involvement of genetic predisposition, certain pathogens, a decreased lymphocyte responsiveness to Treg suppression, gender-dependent differences in T cell activation, alterations in the complement system, an enlarged naïve, mature autoreactive B-lymphocyte pool [22], and aberrant apoptosis and/or insufficient clearance of apoptotic cells [3,4]. Based on our current knowledge, we propose the following model, which is graphically depicted in Figure 3. Due to aberrant apoptosis, and/or insufficient clearance of apoptotic cells, combined with a SLE-susceptible genetic background, high (local or systemic) concentrations of apoptotic nucleosomes and blebs are present in SLE patients. These apoptotic nucleosomes and blebs can then be ingested by mDCs. Nucleosomes that are modified during apoptosis, and/or endogenous danger ligands incorporated in blebs are responsible for the maturation of mDCs, which subsequently secrete proinflammatory cytokines such as IL-6, and present apoptosis-induced, modified autoantigens in an immunogenic way to T cells. The development and activity of Tregs is inhibited by IL-6, whereas IL-6 may, in combination with TGF- β and/or other proinflammatory cytokines, lead to the activation of Th17 cells and other Th cell subsets. Although the initially activated Th cells may be specific for modified autoantigens, epitope spreading will account for activation of B cells specific for modified as well as unmodified autoantigens. The produced autoantibodies will form immune complexes with antigens released from improperly cleared apoptotic cells. The opsonization of apoptotic material by autoantibodies enhances its uptake by mDCs [61]. Moreover, pDCs encountering these immune complexes produce high concentrations of IFN- α [62], which adds to the maturation of mDCs and supports isotype switching and autoantibody production by autoreactive B cells [63]. In this way, pDCs can amplify the autoimmune response initiated by mDCs. Moreover, the immune complexes can bind to basement membranes in diverse organs, causing inflammation, which leads to the various disease manifestations, including lupus nephritis, and tissue destruction [64]. In turn, the tissue destruction can result in a local increase in apoptosis, yet another positive feedback loop that contributes to a progressive course of the disease in time.

Based on this model we postulate that DCs play a pivotal role in the initiation and progression of SLE. Although SLE patients are often treated with rather unspecific immunosuppressive drugs, the data presented



here suggest that specific interference in the maturation of DCs, TLR signaling, or the development of certain T cell subsets might become attractive treatment goals. For example, hydroxychloroquine, which inhibits signaling via TLR3, 7, 8 and 9 by blocking the acidification of endosomes, is a well known effective drug in the treatment of SLE patients [65]. Furthermore, inhibition of

TLR7 and 9 was recently shown to ameliorate the disease manifestations in lupus-prone mice [66]. Further knowledge of the role of endogenous apoptotic (modified) compounds and their receptors in the maturation of DCs and the activation of specific T cell subsets, such as Th17 cells, may reveal novel targets for the specific treatment of SLE.

Abbreviations

DAMP = danger-associated molecular pattern; DC = dendritic cell; HMGB1 = high-mobility group box 1 protein; IFN = interferon; IL = interleukin; mDC = myeloid dendritic cell; PAMP = pathogen associated molecular pattern; pDC = plasmacytoid dendritic cell; PRR = pathogen recognition receptor; RAGE = receptor for advanced glycation end products; SLE = systemic lupus erythematosus; TGF = tumor growth factor; Th = T helper; TLR = Toll-like receptor; TNF = tumor necrosis factor; Treg = regulatory T cell.

Competing interests

The authors declare that they have no competing interests.

Author details

¹Nephrology Research Laboratory, Nijmegen Centre for Molecular Life Sciences, Department of Nephrology, Radboud University Nijmegen Medical Centre, 6500 HB Nijmegen, The Netherlands. ²Department of Tumor Immunology, Nijmegen Centre for Molecular Life Sciences, Radboud University Nijmegen Medical Centre, 6500 HB Nijmegen, The Netherlands.

Published: 26 April 2010

References

- Lu L, Kaliyaperumal A, Boumpas DT, Datta SK: **Major peptide autoepitopes for nucleosome-specific T cells of human lupus.** *J Clin Invest* 1999, **104**:345-355.
- Casciola-Rosen LA, Anhalt G, Rosen A: **Autoantigens targeted in systemic lupus erythematosus are clustered in two populations of surface structures on apoptotic keratinocytes.** *J Exp Med* 1994, **179**:1317-1330.
- Gaipel US, Munoz LE, Grossmayer G, Lauber K, Franz S, Sarter K, Voll RE, Winkler T, Kuhn A, Kalden J, Kern P, Herrmann M: **Clearance deficiency and systemic lupus erythematosus (SLE).** *J Autoimmun* 2007, **28**:114-121.
- Herrmann M, Voll RE, Zoller OM, Hagenhofer M, Ponner BB, Kalden JR: **Impaired phagocytosis of apoptotic cell material by monocyte-derived macrophages from patients with systemic lupus erythematosus.** *Arthritis Rheum* 1998, **41**:1241-1250.
- Banchereau J, Steinman RM: **Dendritic cells and the control of immunity.** *Nature* 1998, **392**:245-252.
- Ohnmacht C, Pullner A, King SB, Drexler I, Meier S, Brocker T, Voehringer D: **Constitutive ablation of dendritic cells breaks self-tolerance of CD4 T cells and results in spontaneous fatal autoimmunity.** *J Exp Med* 2009, **206**:549-559.
- Chen M, Huang L, Wang J: **Deficiency of Bim in dendritic cells contributes to overactivation of lymphocytes and autoimmunity.** *Blood* 2007, **109**:4360-4367.
- Blanco P, Palucka AK, Pascual V, Banchereau J: **Dendritic cells and cytokines in human inflammatory and autoimmune diseases.** *Cytokine Growth Factor Rev* 2008, **19**:41-52.
- Dalgaard J, Beckstrom KJ, Jahnsen FL, Brinchmann JE: **Differential capability for phagocytosis of apoptotic and necrotic leukemia cells by human peripheral blood dendritic cell subsets.** *J Leukoc Biol* 2005, **77**:689-698.
- Iwasaki A, Medzhitov R: **Toll-like receptor control of the adaptive immune responses.** *Nat Immunol* 2004, **5**:987-995.
- Inaba K, Turley S, Yamaide F, Iyoda T, Mahnke K, Inaba M, Pack M, Subklewe M, Sauter B, Sheff D, Albert M, Bhardwaj N, Mellman I, Steinman RM: **Efficient presentation of phagocytosed cellular fragments on the major histocompatibility complex class II products of dendritic cells.** *J Exp Med* 1998, **188**:2163-2173.
- Ito Y, Aoki H, Kimura Y, Takano M, Shimokata K, Maeno K: **Natural interferon-producing cells in mice.** *Infect Immun* 1981, **31**:519-523.
- Theofilopoulos AN, Baccala R, Beutler B, Kono DH: **Type I interferons (alpha/beta) in immunity and autoimmunity.** *Annu Rev Immunol* 2005, **23**:307-336.
- Marshak-Rothstein A: **Toll-like receptors in systemic autoimmune disease.** *Nat Rev Immunol* 2006, **6**:823-835.
- Nakou M, Knowlton N, Frank MB, Bertsias G, Osban J, Sandel CE, Papadaki H, Raptopoulos A, Sidiropoulos P, Kritikos I, Tassioulas I, Centola M, Boumpas DT: **Gene expression in systemic lupus erythematosus: bone marrow analysis differentiates active from inactive disease and reveals apoptosis and granulopoiesis signatures.** *Arthritis Rheum* 2008, **58**:3541-3549.
- Munoz LE, van Bavel C, Franz S, Berden J, Herrmann M, van der Vlag J: **Apoptosis in the pathogenesis of systemic lupus erythematosus.** *Lupus* 2008, **17**:371-375.
- Sturfelt G, Truedsson L: **Complement and its breakdown products in SLE.** *Rheumatology (Oxford)* 2005, **44**:1227-1232.
- Russell AI, Cunningham-Graham DS, Shepherd C, Robertson CA, Whittaker J, Meeks J, Powell RJ, Isenberg DA, Walport MJ, Vyse TJ: **Polymorphism at the C-reactive protein locus influences gene expression and predisposes to systemic lupus erythematosus.** *Hum Mol Genet* 2004, **13**:137-147.
- Chitrabamrung S, Rubin RL, Tan EM: **Serum deoxyribonuclease I and clinical activity in systemic lupus erythematosus.** *Rheumatol Int* 1981, **1**:55-60.
- Kyewski B, Klein L: **A central role for central tolerance.** *Annu Rev Immunol* 2006, **24**:571-606.
- Lee JW, Epardaud M, Sun J, Becker JE, Cheng AC, Yonekura AR, Heath JK, Turley SJ: **Peripheral antigen display by lymph node stroma promotes T cell tolerance to intestinal self.** *Nat Immunol* 2007, **8**:181-190.
- Yurasov S, Wardemann H, Hammersen J, Tsuiji M, Meffre E, Pascual V, Nussenzweig MC: **Defective B cell tolerance checkpoints in systemic lupus erythematosus.** *J Exp Med* 2005, **201**:703-711.
- Dieker JW, Fransen JH, van Bavel CC, Briand JP, Jacobs CW, Muller S, Berden JH, van der Vlag J: **Apoptosis-induced acetylation of histones is pathogenic in systemic lupus erythematosus.** *Arthritis Rheum* 2007, **56**:1921-1933.
- Vogl T, Tenbrock K, Ludwig S, Leukert N, Ehrhardt C, van Zoelen MA, Nacken W, Foell D, van der Poll T, Sorg C, Roth J: **Mrp8 and Mrp14 are endogenous activators of Toll-like receptor 4, promoting lethal, endotoxin-induced shock.** *Nat Med* 2007, **13**:1042-1049.
- Gurung P, Kucaba TA, Ferguson TA, Griffith TS: **Activation-induced CD154 expression abrogates tolerance induced by apoptotic cells.** *J Immunol* 2009, **183**:6114-6123.
- Propato A, Cutrona G, Francavilla V, Ulivi M, Schiappella E, Landt O, Dunbar R, Cerundolo V, Ferrarini M, Barnaba V: **Apoptotic cells overexpress vinculin and induce vinculin-specific cytotoxic T-cell cross-priming.** *Nat Med* 2001, **7**:807-813.
- Fransen JH, Hilbrands LB, Ruben J, Stoffels M, Adema GJ, van der Vlag J, Berden JH: **Mouse dendritic cells matured by ingestion of apoptotic blebs induce T cells to produce interleukin-17.** *Arthritis Rheum* 2009, **60**:2304-2313.
- Rovere P, Vallinoto C, Bondanza A, Crosti MC, Rescigno M, Ricciardi-Castagnoli P, Rugarli C, Manfredi AA: **Bystander apoptosis triggers dendritic cell maturation and antigen-presenting function.** *J Immunol* 1998, **161**:4467-4471.
- Lotze MT, Tracey KJ: **High-mobility group box 1 protein (HMGB1): nuclear weapon in the immune arsenal.** *Nat Rev Immunol* 2005, **5**:331-342.
- Urbanaviciute V, Fürrohr BG, Meister S, Munoz L, Heyder P, De Marchis F, Bianchi ME, Kirschning C, Wagner H, Manfredi AA, Kalden JR, Schett G, Rovere-Querini P, Herrmann M, Voll RE: **Induction of inflammatory and immune responses by HMGB1-nucleosome complexes: implications for the pathogenesis of SLE.** *J Exp Med* 2008, **205**:3007-3018.
- Means TK, Latz E, Hayashi F, Murali MR, Golenbock DT, Luster AD: **Human lupus autoantibody-DNA complexes activate DCs through cooperation of CD32 and TLR9.** *J Clin Invest* 2005, **115**:407-417.
- Boule MW, Broughton C, Mackay F, Akira S, Marshak-Rothstein A, Rifkin IR: **Toll-like receptor 9-dependent and -independent dendritic cell activation by chromatin-immunoglobulin G complexes.** *J Exp Med* 2004, **199**:1631-1640.
- Decker P, Singh-Jasuja H, Haager S, Kotter I, Rammensee HG: **Nucleosome, the main autoantigen in systemic lupus erythematosus, induces direct dendritic cell activation via a MyD88-independent pathway: consequences on inflammation.** *J Immunol* 2005, **174**:3326-3334.
- Tian J, Avalos AM, Mao SY, Chen B, Senthil K, Wu H, Parroche P, Drabic S, Golenbock D, Sirois C, Hua J, An LL, Audoly L, La Rosa G, Bierhaus A, Nawroth P, Marshak-Rothstein A, Crow MK, Fitzgerald KA, Latz E, Kiener PA, Coyle AJ: **Toll-like receptor 9-dependent activation by DNA-containing immune complexes is mediated by HMGB1 and RAGE.** *Nat Immunol* 2007, **8**:487-496.
- Chen GY, Tang J, Zheng P, Liu Y: **CD24 and Siglec-10 selectively repress tissue damage-induced immune responses.** *Science* 2009, **323**:1722-1725.
- Sánchez E, Abelson AK, Sabio JM, González-Gay MA, Ortego-Centeno N, Jiménez-Alonso J, de Ramón E, Sánchez-Román J, López-Nevot MA, Gunnarsson I, Svenungsson E, Sturfelt G, Truedsson L, Jönsen A, González-Escribano MF, Witte T, German Systemic Lupus Erythematosus Study Group, Alarcón-Riquelme ME, Martín J: **Association of a CD24 gene polymorphism with susceptibility to systemic lupus erythematosus.** *Arthritis Rheum* 2007, **56**:3080-3086.

37. Lane JD, Allan VJ, Woodman PG: **Active relocation of chromatin and endoplasmic reticulum into blebs in late apoptotic cells.** *J Cell Sci* 2005, **118**:4059-4071.
38. Moss DK, Betin VM, Malesinski SD, Lane JD: **A novel role for microtubules in apoptotic chromatin dynamics and cellular fragmentation.** *J Cell Sci* 2006, **119**:2362-2374.
39. Bondanza A, Zimmermann VS, Dell'Antonio G, Dal Cin E, Capobianco A, Sabbadini MG, Manfredi AA, Rovere-Querini P: **Cutting edge: dissociation between autoimmune response and clinical disease after vaccination with dendritic cells.** *J Immunol* 2003, **170**:24-27.
40. Ma L, Chan KW, Trendell-Smith NJ, Wu A, Tian L, Lam AC, Chan AK, Lo CK, Chik S, Ko KH, To CK, Kam SK, Li XS, Yang CH, Leung SY, Ng MH, Stott DJ, MacPherson GG, Huang FP: **Systemic autoimmune disease induced by dendritic cells that have captured necrotic but not apoptotic cells in susceptible mouse strains.** *Eur J Immunol* 2005, **35**:3364-3375.
41. Bondanza A, Zimmermann VS, Dell'Antonio G, Cin ED, Balestrieri G, Tincani A, Amoura Z, Piette JC, Sabbadini MG, Rovere-Querini P, Manfredi AA: **Requirement of dying cells and environmental adjuvants for the induction of autoimmunity.** *Arthritis Rheum* 2004, **50**:1549-1560.
42. Sadanaga A, Nakashima H, Akahoshi M, Masutani K, Miyake K, Igawa T, Sugiyama N, Niiro H, Harada M: **Protection against autoimmune nephritis in MyD88-deficient MRL/lpr mice.** *Arthritis Rheum* 2007, **56**:1618-1628.
43. Lech M, Kulkarni OP, Pfeiffer S, Savarese E, Krug A, Garlanda C, Mantovani A, Anders HJ: **Tir8/SigIRR prevents murine lupus by suppressing the immunostimulatory effects of lupus autoantigens.** *J Exp Med* 2008, **205**:1879-1888.
44. Christensen SR, Kashgarian M, Alexopoulou L, Flavell RA, Akira S, Shlomchik MJ: **Toll-like receptor 9 controls anti-DNA autoantibody production in murine lupus.** *J Exp Med* 2005, **202**:321-331.
45. Christensen SR, Shupe J, Nickerson K, Kashgarian M, Flavell RA, Shlomchik MJ: **Toll-like receptor 7 and TLR9 dictate autoantibody specificity and have opposing inflammatory and regulatory roles in a murine model of lupus.** *Immunity* 2006, **25**:417-428.
46. De Jager PL, Richardson A, Vyse TJ, Rioux JD: **Genetic variation in toll-like receptor 9 and susceptibility to systemic lupus erythematosus.** *Arthritis Rheum* 2006, **54**:1279-1282.
47. Kelly-Scumpia KM, Nacionales DC, Scumpia PO, Weinstein JS, Narain S, Moldawer LL, Satoh M, Reeves WH: **In vivo adjuvant activity of the RNA component of the Sm/RNP lupus autoantigen.** *Arthritis Rheum* 2007, **56**:3379-3386.
48. Deane JA, Pisitkun P, Barrett RS, Feigenbaum L, Town T, Ward JM, Flavell RA, Bolland S: **Control of toll-like receptor 7 expression is essential to restrict autoimmunity and dendritic cell proliferation.** *Immunity* 2007, **27**:801-810.
49. Pisitkun P, Deane JA, Difilippantonio MJ, Tarasenko T, Satterthwaite AB, Bolland S: **Autoreactive B cell responses to RNA-related antigens due to TLR7 gene duplication.** *Science* 2006, **312**:1669-1672.
50. Kelley J, Johnson MR, Alarcon GS, Kimberly RP, Edberg JC: **Variation in the relative copy number of the TLR7 gene in patients with systemic lupus erythematosus and healthy control subjects.** *Arthritis Rheum* 2007, **56**:3375-3378.
51. Kono DH, Haraldsson MK, Lawson BR, Pollard KM, Koh YT, Du X, Arnold CN, Baccala R, Silverman GJ, Beutler BA, Theofilopoulos AN: **Endosomal TLR signaling is required for anti-nucleic acid and rheumatoid factor autoantibodies in lupus.** *Proc Natl Acad Sci U S A* 2009, **106**:12061-12066.
52. Baccala R, Hoebe K, Kono DH, Beutler B, Theofilopoulos AN: **TLR-dependent and TLR-independent pathways of type I interferon induction in systemic autoimmunity.** *Nat Med* 2007, **13**:543-551.
53. Korn T, Bettelli E, Oukka M, Kuchroo VK: **IL-17 and Th17 Cells.** *Annu Rev Immunol* 2009, **27**:485-517.
54. Pasare C, Medzhitov R: **Toll pathway-dependent blockade of CD4+CD25+ T cell-mediated suppression by dendritic cells.** *Science* 2003, **299**:1033-1036.
55. Wong CK, Lit LC, Tam LS, Li EK, Wong PT, Lam CW: **Hyperproduction of IL-23 and IL-17 in patients with systemic lupus erythematosus: implications for Th17-mediated inflammation in auto-immunity.** *Clin Immunol* 2008, **127**:385-393.
56. Crispin JC, Oukka M, Bayliss G, Cohen RA, Van Beek CA, Stillman IE, Kyttaris VC, Juang YT, Tsokos GC: **Expanded double negative T cells in patients with systemic lupus erythematosus produce IL-17 and infiltrate the kidneys.** *J Immunol* 2008, **181**:8761-8766.
57. Yang J, Chu Y, Yang X, Gao D, Zhu L, Yang X, Wan L, Li M: **Th17 and natural Treg cell population dynamics in systemic lupus erythematosus.** *Arthritis Rheum* 2009, **60**:1472-1483.
58. Jacob N, Yang H, Pricop L, Liu Y, Gao X, Zheng SG, Wang J, Gao HX, Putterman C, Koss MN, Stohl W, Jacob CO: **Accelerated pathological and clinical nephritis in systemic lupus erythematosus-prone New Zealand Mixed 2328 mice doubly deficient in TNF receptor 1 and TNF receptor 2 via a Th17-associated pathway.** *J Immunol* 2009, **182**:2532-2541.
59. Bubier JA, Sproule TJ, Foreman O, Spolski R, Shaffer DJ, Morse HC 3rd, Leonard WJ, Roopenian DC: **A critical role for IL-21 receptor signaling in the pathogenesis of systemic lupus erythematosus in BXSB-Yaa mice.** *Proc Natl Acad Sci U S A* 2009, **106**:1518-1523.
60. Kang HK, Liu M, Datta SK: **Low-dose peptide tolerance therapy of lupus generates plasmacytoid dendritic cells that cause expansion of autoantigen-specific regulatory T cells and contraction of inflammatory Th17 cells.** *J Immunol* 2007, **178**:7849-7858.
61. Frisoni L, McPhie L, Colonna L, Sriram U, Monestier M, Gallucci S, Caricchio R: **Nuclear autoantigen translocation and autoantibody opsonization lead to increased dendritic cell phagocytosis and presentation of nuclear antigens: a novel pathogenic pathway for autoimmunity?** *J Immunol* 2005, **175**:2692-2701.
62. Lovgren T, Eloranta ML, Bave U, Alm GV, Ronnblom L: **Induction of interferon-alpha production in plasmacytoid dendritic cells by immune complexes containing nucleic acid released by necrotic or late apoptotic cells and lupus IgG.** *Arthritis Rheum* 2004, **50**:1861-1872.
63. Tovey MG, Lallemand C, Thyphronitis G: **Adjuvant activity of type I interferons.** *Biol Chem* 2008, **389**:541-545.
64. van Bavel CC, Fenton KA, Rekvig OP, van der Vlag J, Berden JH: **Glomerular targets of nephritogenic autoantibodies in systemic lupus erythematosus.** *Arthritis Rheum* 2008, **58**:1892-1899.
65. Ruiz-Irastorza G, Ramos-Casals M, Brito-Zeron P, Khamashta MA: **Clinical efficacy and side effects of antimalarials in systemic lupus erythematosus: a systematic review.** *Ann Rheum Dis* 2010, **69**:20-28.
66. Barrat FJ, Meeker T, Chan JH, Guiducci C, Coffman RL: **Treatment of lupus-prone mice with a dual inhibitor of TLR7 and TLR9 leads to reduction of autoantibody production and amelioration of disease symptoms.** *Eur J Immunol* 2007, **37**:3582-3586.

doi:10.1186/ar2966

Cite this article as: Fransen JH, *et al.*: The role of dendritic cells in the pathogenesis of systemic lupus erythematosus. *Arthritis Research & Therapy* 2010, **12**:207.