

## Research article

## Open Access

**CXCL12 is displayed by rheumatoid endothelial cells through its basic amino-terminal motif on heparan sulfate proteoglycans**Begoña Santiago<sup>1</sup>, Françoise Baleux<sup>2</sup>, Guillermo Palao<sup>1</sup>, Irene Gutiérrez-Cañas<sup>1</sup>, Juan C Ramírez<sup>1</sup>, Fernando Arenzana-Seisdedos<sup>3</sup> and José L Pablos<sup>1</sup><sup>1</sup>Servicio de Reumatología y Unidad de Investigación, Hospital 12 de Octubre, Avda. de Córdoba s/n, 28041 Madrid, Spain<sup>2</sup>Organic Chemistry Unit, Pasteur Institute, 28 Rue Dr. Roux, 75724 Paris CEDEX, France<sup>3</sup>Viral Immunology Unit, Pasteur Institute, 28 Rue Dr. Roux, 75724 Paris CEDEX, FranceCorresponding author: José L Pablos, [jl\\_pablos@h12o.es](mailto:jl_pablos@h12o.es)

Received: 7 Sep 2005 Revisions requested: 20 Oct 2005 Revisions received: 9 Jan 2006 Accepted: 17 Jan 2006 Published: 3 Feb 2006

*Arthritis Research & Therapy* 2006, **8**:R43 (doi:10.1186/ar1900)This article is online at: <http://arthritis-research.com/content/8/2/R43>© 2006 Santiago *et al.*; licensee BioMed Central Ltd.This is an open access article distributed under the terms of the Creative Commons Attribution License (<http://creativecommons.org/licenses/by/2.0>), which permits unrestricted use, distribution, and reproduction in any medium, provided the original work is properly cited.**Abstract**

The chemokine CXCL12 (also known as stromal cell-derived factor, SDF-1) is constitutively expressed by stromal resident cells and is involved in the homeostatic and inflammatory traffic of leukocytes. Binding of CXCL12 to glycosaminoglycans on endothelial cells (ECs) is supposed to be relevant to the regulation of leukocyte diapedesis and neoangiogenesis during inflammatory responses. To improve our understanding of the relevance of this process to rheumatoid arthritis (RA), we have studied the mechanisms of presentation of exogenous CXCL12 by cultured RA ECs. RA synovial tissues had higher levels of CXCL12 on the endothelium than osteoarthritis (OA) tissues; in both, CXCL12 colocalized to heparan sulfate proteoglycans (HSPGs) and high endothelial venules. In cultured RA ECs, exogenous CXCL12 $\alpha$  was able to bind in a CXCR4-independent manner to surface HSPGs. Desulfation of RA EC HSPGs by pretreatment with sodium chlorate, or by replacing in a synthetic CXCL12 $\alpha$  the residues Lys24 and Lys27 by Ser

(CXCL12 $\alpha$ -K2427S), decreased or abrogated the ability of the chemokine to bind to RA ECs. *Ex vivo*, synovial ECs from patients with either OA or RA displayed a higher CXCL12-binding capacity than human umbilical vein ECs (HUVECs), and in HUVECs the binding of CXCL12 was increased on exposure to tumor necrosis factor- $\alpha$  or lymphotoxin- $\alpha_1\beta_2$ . Our findings indicate that CXCL12 binds to HSPGs on ECs of RA synovium. The phenomenon relates to the interaction of HSPGs with a CXCL12 domain with net positive surface charge located in the first  $\beta$  strand, which encompasses a canonical BXBB HSPG-binding motif. Furthermore, we show that the attachment of CXCL12 to HSPGs is upregulated by inflammatory cytokines. Both the upregulation of a constitutive chemokine during chronic inflammation and the HSPG-dependent immobilization of CXCL12 in EC surfaces are potential sites for therapeutic intervention.

**Introduction**

Chemokines are a large family of soluble proteins involved in leukocyte activation and traffic during inflammatory responses. Chemokines signal through G-protein-coupled receptors [1]. *In vivo*, chemokine-dependent directional migration of leukocytes is supposed to require the immobilization of chemokines either to the extracellular matrix or to cell surfaces. Chemokines induce cell-matrix or cell-cell adhesion through the activation of integrins, and studies *in vivo* demonstrate that the presence of chemokines immobilized on the luminal side of endothelium is a critical step for firm adhesion and transend-

othelial migration of rolling leukocytes [2-6]. This phenomenon can be reproduced *in vitro* in cultured endothelial cells (ECs) and depends on the addition of exogenous chemokines and the presence of fluid shear-induced mechanical stress on leukocytes [5,6]. Endothelial cells secrete a limited number of chemokines, suggesting that many of the homeostatic or inflammatory chemokines presented at the EC surface come from other cell sources by transcytosis and docking of chemokines on the EC luminal surface [7-9].

EC = endothelial cell; FCS = fetal calf serum; FITC = fluorescein isothiocyanate; HEV = high endothelial venule; HSPG = heparan sulfate proteoglycan; HUVEC = human umbilical vein EC; LT- $\alpha_1\beta_2$  = lymphotoxin  $\alpha_1\beta_2$ ; mAb = monoclonal antibody; OA = osteoarthritis; RA = rheumatoid arthritis; RT-PCR = reverse transcriptase polymerase chain reaction; TNF- $\alpha$  = tumor necrosis factor- $\alpha$ .

CXCL12 (also known as stromal cell-derived factor, SDF-1) is the unique identified natural ligand of the G-protein-coupled receptor CXCR4 and exhibits both homeostatic and proinflammatory functions in humans. The main cellular sources of CXCL12 are resident stromal fibroblasts and epithelial cells. CXCL12 participates in the homeostatic traffic of hematopoietic cells and lymphocytes. Indeed, CXCL12 is constitutively displayed by endothelial cells (ECs) in the bone marrow and secondary lymphoid organs, where it seems to be produced by nearby osteoblasts, stromal cells, or tonsil epithelium [10-12]. The CXCL12/CXCR4 axis also participates in the recruitment of inflammatory cells as shown in animal models of allergic airway disease and rheumatoid arthritis (RA) [13-15]. CXCL12 is constitutively expressed by synovial fibroblasts and lung epithelium and is not a cytokine-inducible factor. The mechanisms that induce the upregulation of CXCL12-mediated leukocyte recruitment in these models therefore remain unclear [15,16]. In this regard, blocking CXCR4 by non-peptidic antagonists has been an effective anti-inflammatory therapy in both asthma and arthritis models [13-15]. In RA and lymph nodes, CXCL12 mRNA is expressed by perivascular stromal cells but not by endothelial cells [11,16]. Our previous studies have shown that CXCL12 protein is specifically immunodetected in RA endothelium, in sharp contrast with normal synovial vessels [16]. The presence of cell-surface immobilized CXCL12 in endothelium was sensitive to heparitinase, which selectively degrades the glycosaminoglycan moiety (heparan sulfate) in heparan sulfate proteoglycans (HSPGs). These findings suggest that the presence of CXCL12 immobilized in ECs, in the lumen of vessels, is enhanced under inflammatory conditions. Potential mechanisms are either increased secretion or increased transport and docking of perivascular CXCL12 to the luminal side of ECs. Previous reports showed that, *in vitro*, CXCL12 specifically binds heparan sulfates through a domain with net positive surface charge located in its first  $\beta$  strand, which encompasses a canonical BXBB HSPG-binding motif [17-19]. The sensitivity of EC-bound CXCL12 to heparitinase in RA is compatible with cell-surface attachment of the chemokine by a HSPG-dependent mechanism.

We have analyzed the mechanisms of interaction between exogenous CXCL12 and ECs obtained from synovial tissues, and here we show that CXCL12 binds to membrane HSPGs in cultured RA ECs independently of its CXCR4 receptor. Importantly, the amount of immobilized CXCL12 was upregulated by tumor necrosis factor (TNF)- $\alpha$  or lymphotoxin  $\alpha_1\beta_2$  (LT- $\alpha_1\beta_2$ ) treatment in non-synovial ECs, suggesting that the presentation of CXCL12 on ECs can be upregulated at the EC level, independently of its degree of expression. Furthermore, the immobilization of CXCL12 on RA EC surfaces is explained by the selective interaction of sulphated HSPGs and no other proteoglycans. This interaction relies on the integrity of a positively charged amino acid cluster located in the first

sheet of the CXCL12  $\beta$  strand, which forms the canonical binding motif for HSPG.

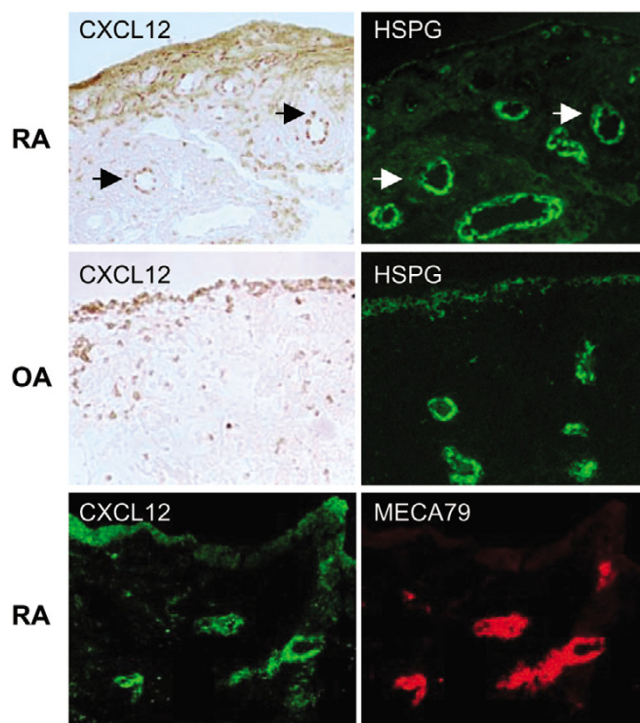
## Materials and methods

Biotinylated CXCL12 $\alpha$  was synthesized by the Merrifield solid-phase method on a fully automated peptide synthesizer using Fmoc (*N*-(9-fluorenyl)methoxycarbonyl) chemistry as described previously [17,18]. Selective biotinylation at the carboxy-terminal position was achieved by incorporating a lysine residue (Lys68) bearing a 4,4-dimethyl-2,6-dioxycyclohex-1-ethylidene (Dde) protective group on the side chain. Coupling of biotin was performed on the peptide resin after Dde deprotection. Non-biotinylated native CXCL12 $\alpha$  or 2/6 CXCL12 $\alpha$ , in which the basic residues Lys24 and Lys27 were replaced by Ser (CXCL12 $\alpha$ -K2427S), were synthesized similarly.

Synovial EC cultures were obtained from enzymatic cell suspensions of three RA and four osteoarthritis (OA) synovial tissues obtained at the time of joint replacement surgery. All patients gave informed consent, and the study was approved by the ethics committee of the Hospital 12 de Octubre. ECs were purified by two rounds of immunomagnetic enrichment with anti-CD105 coupled to magnetic beads (Miltenyi Biotec, Bergisch Gladbach, Germany). ECs were cultured in medium 199 (Life Technologies, Paisley, Renfrewshire, Scotland) with 10% FCS and the endothelial identity of cultured cells was confirmed by flow cytometry with UEA-rhodamine and anti-P1H12 antibodies (Chemicon, Temecula, CA, USA). Human umbilical vein ECs (HUVECs) were prepared from umbilical cord by digestion with collagenase and were propagated in medium 199 with 20% FCS. Cultures displaying more than 90% cells positive for both EC markers were used between the third and seventh passages.

Cultured ECs were exposed to 300 to 1,000 nM CXCL12 $\alpha$  peptides for 90 minutes in PBS buffer at 4°C and washed extensively in PBS. Surface presentation of exogenous CXCL12 $\alpha$  was analysed by flow cytometry with K15C mAb and fluorescein isothiocyanate (FITC)-labelled secondary antibody or, in the case of biotinylated CXCL12 $\alpha$ , with avidin-FITC (Pharmingen, San Diego, CA, USA). Expression of HSPGs in cultured ECs was studied with 10E4 anti-heparan sulfate-FITC mAb (Calbiochem, San Diego, CA, USA). Expression of CXCR4 in cultured ECs was studied with 12G5 mAb (Pharmingen) in 0.5% Tween 20 permeabilized or non-permeabilized ECs.

Where indicated, 500  $\mu$ g/ml sodium heparin (Rovi S.A., Madrid, Spain) or 50  $\mu$ g/ml T134 (a CXCR4 inhibitor) was added to the CXCL12 $\alpha$  incubation medium. T134 specifically prevents the binding of CXCL12 to CXCR4 receptor at picomolar concentrations [20]. Pretreatment of EC cultures with 60 mM sodium chlorate was performed for 24 hours before CXCL12 $\alpha$  binding. Removal of surface HSPGs in cultured

**Figure 1**

Double labelling of CXCL12/HSPGs and CXCL12/MECA-79 of rheumatoid arthritis (RA) and osteoarthritis (OA) synovial tissues. Frozen RA or OA sections were labeled simultaneously with anti-CXCL12 K15C mAb and fluorescein isothiocyanate (FITC)-conjugated anti-heparan sulfate proteoglycan (HSPG) mAb (green fluorescence) or MECA-79 mAb (red fluorescence). In CXCL12/HSPG double-labeled sections, CXCL12 was developed with immunoperoxidase (brown color) and in CXCL12/MECA-79 double-labeled sections with a secondary FITC-labeled antibody. Arrows indicate colocalization of CXCL12 to HSPG-labeled RA vessels. The same section, sequentially photographed under appropriate optics, is shown in parallel left and right panels. Original magnification  $\times 400$ .

cells was performed by treatment with a cocktail of 100 mU/ml heparitinases I, II and III each, or 100 mU/ml chondroitin sulfate ABC lyase as a control for 90 minutes at 37°C (Sigma Aldrich Quimica S.A., Madrid, Spain). Where indicated, EC cultures were stimulated with either 25 ng/ml TNF- $\alpha$  or 10 ng/ml LT- $\alpha$ 1/ $\beta$ 2 (R&D Systems, Inc., Abingdon, Oxon, UK) for 16 hours before CXCL12 $\alpha$  binding.

CXCL12 expression by ECs was studied by RT-PCR on cDNA synthesized from 1  $\mu$ g of total RNA with the use of the CXCL12 oligonucleotides 5' -TCTGAGAGCTCGCTTGAGTG-3' (upstream) and 5' -GTGGATCGCATCTATGCATG-3' (downstream) and the  $\beta$ -actin oligonucleotides 5' -CTACCTCATGAAGATCCTCAC-3' (upstream) and 5' -GTC-CACGTCACTTCATGATG-3' (downstream). As a positive control for CXCL12 expression we used cDNA from RA synovial fibroblasts.

For immunolabelling of synovial tissues from patients with RA and control patients with OA, tissues were snap-frozen in optimal cutting temperature (OCT) compound and stored at -80°C. Double labelling for HSPGs and CXCL12, or MECA-79 and CXCL12, was performed as described previously [16,21].

Flow cytometry data were expressed as mean fluorescence intensity (mean  $\pm$  SD), normalized by the mean fluorescence intensity of the negative control. Statistical analysis was performed with Student's *t* test.

## Results

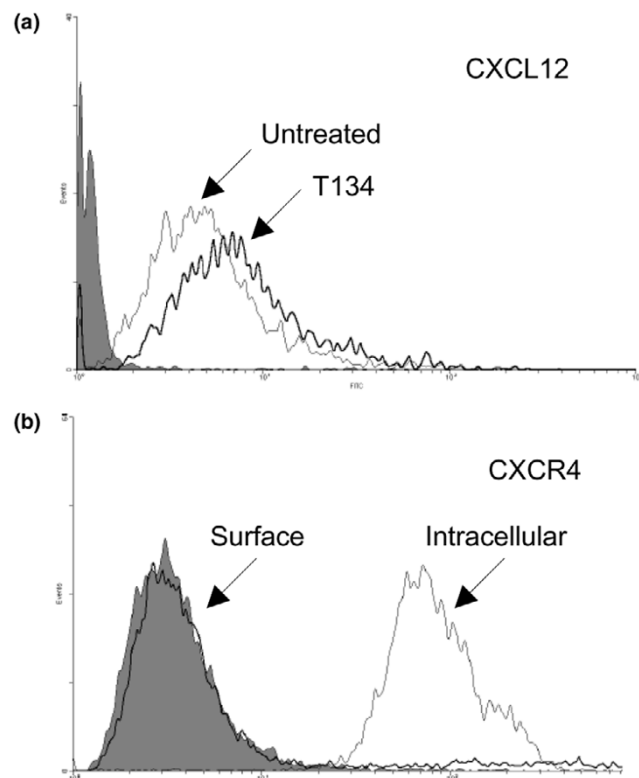
### HSPGs and CXCL12 are immunodetected in RA vessels

By immunoperoxidase labelling of RA ( $n = 9$ ) and OA ( $n = 8$ ) synovial sections, we found that CXCL12 was abundantly present on the luminal side of RA sublining vessels (nine of nine tissues) in contrast to OA vessels, in which it was only rarely (three of eight tissues) and weakly detected (Figure 1). HSPGs were detected with a diffuse pattern involving all vessels in both RA and OA sections. Colocalization of HSPGs and CXCL12 was confirmed in RA vessels, although many vessels in RA sections and all vessels in most OA sections lacked CXCL12 despite their clear expression of HSPGs (Figure 1). In both RA and OA sections, CXCL12 was detected in lining synoviocytes and scattered fibroblasts in the sublining, although RA sections showed a higher proportion of labelled cells and some areas of extracellular matrix labelling.

High endothelial venule (HEV)-like vessels are found in RA synovium but not in OA synovium and represent specialized vessels involved in cell recruitment [21]. Because labeling of RA vessels with CXCL12 seemed to be present in both flat and HEVs, we studied whether MECA-79-expressing HEVs also display CXCL12 immunostaining. By double MECA-79 and CXCL12 immunofluorescent labelling, we observed that MECA-79-positive HEVs preferentially displayed CXCL12 compared with flat MECA-79-negative vessels (Figure 1).

### CXCL12 $\alpha$ binding to cultured RA ECs

To study the potential interactions between CXCL12 $\alpha$  and EC surface molecules, we analysed the ability of human RA ECs to present exogenous native or biotinylated CXCL12 $\alpha$  on their surface molecules. Endogenous CXCL12 expression was not detectable by the K15C mAb in cultured RA ECs. We have previously shown by *in situ* hybridization that, in spite of the positive immunodetection of CXCL12 in RA ECs, these cells lacked CXCL12 mRNA expression [16]. To confirm the lack of CXCL12 expression by RA ECs we performed RT-PCR in cultured RA ECs, which yielded negative results in all tested RA EC cell lines; this was in contrast with synovial fibroblasts, in which CXCL12 message was detected (data not shown). We found that after the addition of exogenous native or biotinylated CXCL12 $\alpha$ , surface-bound CXCL12 $\alpha$  was readily detected by flow cytometry (Figure 2a). This binding was unlikely to have been due to CXCR4 binding, as indicated by

**Figure 2**

Binding of CXCL12 to RA ECs is independent of CXCR4. **(a)** Rheumatoid arthritis endothelial cells (RA ECs) were incubated with 300 nM biotinylated CXCL12 $\alpha$  and, after extensive washing to remove free chemokine, were labeled with fluorescein isothiocyanate-conjugated avidin. Where indicated, RA ECs were simultaneously incubated with 50  $\mu$ g/ml of the CXCR4 antagonist T134 or not (untreated). **(b)** Surface or intracellular CXCR4 was detected with 12G5 mAb. Filled histograms show isotype control IgG. Results are representative of three independent experiments with RA ECs from different donors.

the following lines of evidence. In cultured RA ECs, CXCR4 was largely located to an intracellular pool and surface expression was very low or undetectable by flow cytometric analysis with 12G5 anti-CXCR4 mAb of permeabilized or non-permeabilized cells (Figure 2b). Moreover, CXCR4-bound CXCL12 cannot be detected by K15C, which recognizes an epitope encoding the critical residues involved in CXCL12 cell signaling [17]. Finally, pretreatment of RA ECs with an excess of the CXCR4-specific inhibitor T134, which precludes CXCL12 $\alpha$  binding to CXCR4 [20], did not affect the immunodetection of RA EC-bound CXCL12 (Figure 2a).

Heparin is a sulfated GAG, chemically related to HSPGs, that has previously been shown to interact with CXCL12 $\alpha$  *in vitro* [18]. Because soluble heparin decreased the binding of CXCL12 $\alpha$  to RA ECs (Figure 3a), we pretreated RA ECs either with heparitinases I, II, and III or with chondroitin sulfate lyase to assess whether RA EC HSPGs were involved in the interaction. Pretreatment with heparitinases, but not chondroi-

tinase, substantially decreased the level of HSPG expression and surface binding of CXCL12 $\alpha$  to RA ECs (Figure 3b,c).

To examine whether the interaction between RA EC HSPGs and CXCL12 $\alpha$  requires the cluster of basic residues that comprise a putative HSPG-binding motif in the first amino-terminal  $\beta$  strand of CXCL12 and sulfated groups on HSPGs as previously observed in filter binding assays [18], we compared the binding of wild-type CXCL12 $\alpha$  and 2/6 CXCL12 $\alpha$  (K2427S mutation) to RA ECs. Detection of surface-bound wild-type CXCL12 $\alpha$  or 2/6 CXCL12 $\alpha$  was performed with anti-CXCL12 $\alpha$  K15C antibody, which recognizes both peptides equally [17]. Modified 2/6 CXCL12 $\alpha$  was undetectable on RA ECs, in contrast with wild-type CXCL12 $\alpha$  (Figure 3e). To analyse the role of HSPG sulfate groups, we preincubated RA ECs for 24 hours with sodium chlorate, a specific inhibitor of the synthesis of 3' -phosphoadenosine 5' -phosphosulfate (PAPS), which is the sole sulfur donor in sulphated HSPG synthesis. Pretreatment with sodium chlorate decreased the binding of CXCL12 $\alpha$  to RA ECs, confirming the need for sulphate groups in the interaction between CXCL12 $\alpha$  and HSPG (Figure 3d).

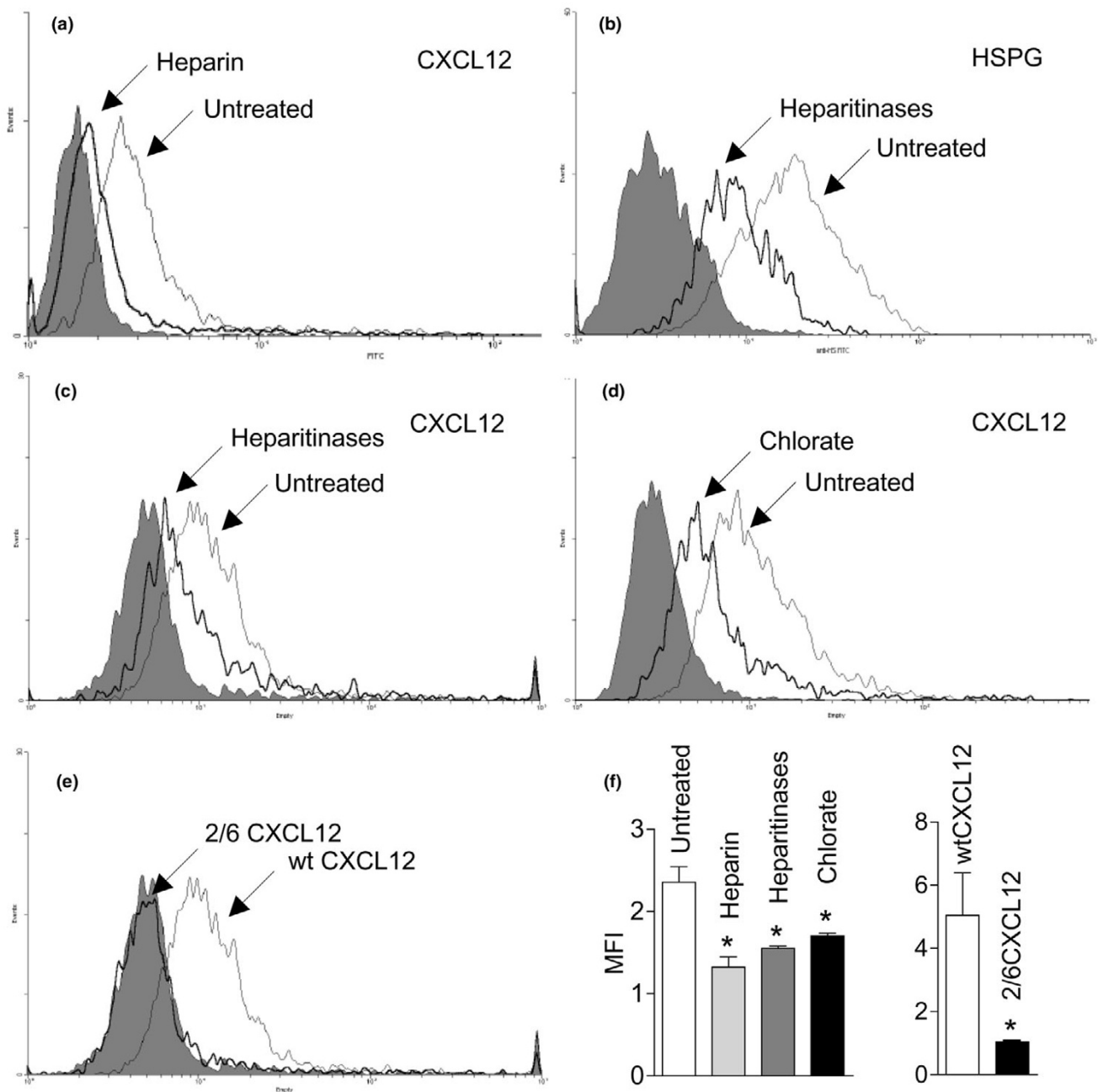
#### **CXCL12 $\alpha$ binding to different synovial and non-synovial ECs and cytokine effects**

The observed interaction between EC HSPGs and CXCL12 $\alpha$  is not specific to RA ECs, because it has been reported in other human ECs such as primary or transformed HUVECs [17,19]. The increased CXCL12 endothelial labelling observed in RA tissues by immunohistochemistry might therefore relate to a higher amount of exogenous CXCL12 docking onto RA vessels, but it might also relate to specific changes in ECs present in the inflammatory environment, as suggested by our observation of stronger CXCL12 display by HEV-type vessels.

The capacity of cultured RA ECs to bind biotinylated CXCL12 $\alpha$  was similar to that of OA ECs but in contrast to that of non-synovial ECs (HUVECs), in which constitutive binding of biotinylated CXCL12 $\alpha$  was significantly lower than observed in synovial RA or OA ECs (Figure 4). To test whether CXCL12 $\alpha$  binding can be upregulated in cells with lower binding capacity, we pretreated HUVECs with either TNF- $\alpha$  or LT- $\alpha_1\beta_2$ , two cytokines involved in the activation of ECs during chronic inflammation. Pretreatment of HUVECs with TNF- $\alpha$  or LT- $\alpha_1\beta_2$  significantly increased the capacity of HUVECs to bind exogenous CXCL12 $\alpha$  to HUVECs (Figure 4). Constitutive or TNF- $\alpha$ -induced binding of CXCL12 $\alpha$  to HUVECs was also dependent on HSPGs because it was not competed for by T134 and was decreased by pretreatment with sodium chlorate, heparin, or heparitinases (data not shown).

Finally, the possibility of the involvement of MECA-79-related glycoproteins in CXCL12 $\alpha$  binding *in vitro* was excluded,

**Figure 3**



Binding of CXCL12 peptides to HSPG on RA ECs. Rheumatoid arthritis endothelial cells (RA ECs) were incubated with 300 nM biotinylated CXCL12 $\alpha$  and, after extensive washing to remove free chemokine, were labeled with fluorescein isothiocyanate-conjugated avidin. Where indicated, RA ECs were simultaneously incubated with soluble sodium heparin (a) or pretreated with heparitinases (b, c) or sodium chlorate (d). In (b), surface heparan sulfate proteoglycan (HSPG) was detected with 10E4 mAb in RA ECs pretreated or not with heparitinases. (e) RA ECs were incubated with 1  $\mu$ M non-biotinylated wild-type CXCL12 $\alpha$  or 2/6 CXCL12 $\alpha$  and labelled with K15C mAb. Filled histograms show isotype control IgG. Results are representative of three to five independent experiments with RA ECs from three different donors. (f) Summary of normalized mean fluorescence intensity (MFI) data. Error bars show SD. \* $p < 0.05$ .

because under culture conditions neither RA ECs nor HUVECs expressed MECA-79 (data not shown).

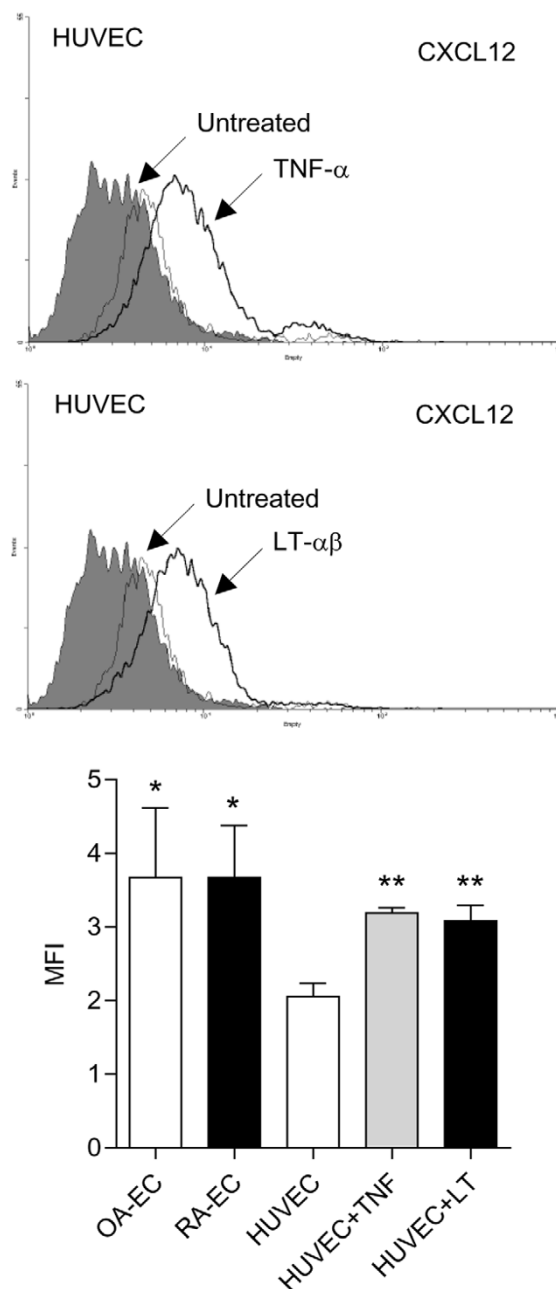
### Discussion

Several observations have indicated the importance of chemokine docking on the luminal surface of ECs on the chemokine activation of firm adhesion and transendothelial migration of circulating leukocytes [2-6]. The lack of expression of several homeostatic and inflammatory chemokines by ECs contrasts with their relevance in the homing of leukocytes and other cell types to central lymphoid organs or inflamed tissues, suggesting that the presentation of exogenous chemokines by ECs is a pathophysiologically important process [7-11].

CXCL12 has been suggested to have multifunctional roles in the pathogenesis of RA, and its genetic variation is associated with a more severe disease [16,22,23]. Two of the proposed effects of CXCL12 in the pathogenesis of RA are cell recruitment and angiogenesis, two processes requiring its presence on ECs, which do not express autocrine CXCL12 [16,22]. Our data demonstrate that CXCL12 $\alpha$ , which is produced only by RA stromal cells *in vivo*, is specifically bound to HSPGs on RA ECs, from where it may trigger the firm adhesion and transendothelial migration of rolling leukocytes, or may contribute to angiogenesis by enhanced interactions with EC CXCR4. Consistently with previous studies in a human EC cell line [17], CXCL12 $\alpha$  docking on RA EC membrane relies on interactions between its first  $\beta$  strand basic motif and sulphated HSPG groups. This process was not specific to RA ECs because it is observed in other synovial (OA) and non-synovial (HUVEC) EC types. Interestingly, a higher CXCL12 binding capacity was observed *ex vivo* in all lines of synovial origin (either OA or RA) compared with non-synovial ECs (HUVECs), and this may relate to features specific to either the tissue or vessel type.

Importantly, the preferential location of CXCL12 in rheumatoid HEVs decorated with the MECA-79 epitope, as a marker for L-selectin ligand, provides a link between selectin and chemokine-mediated adhesion processes. Both phenomena may be a consequence of the exposure of EC to the cytokines TNF- $\alpha$  and LT- $\alpha_1\beta_2$ , which, in transgenic animals or *in vitro*, have been shown to induce the expression of synthetic enzymes for the sulfation of HSPGs and MECA-79 as well as homing chemokines [21,24-26]. In the present study, CXCL12 binding was increased *in vitro* in HUVECs exposed to TNF- $\alpha$  or LT- $\alpha_1\beta_2$ , suggesting that inducible changes in the affinity or composition of HSPGs might account for this phenomenon in ECs from a non-inflammatory environment in response to these cytokines. Previous studies show that HSPG sulfation, and the enzymes responsible for it, are inducible by cytokines [24,25]. These data and our previous observations suggest that the elements needed for L-selectin rolling [21], and for CXCL12 presentation (which can induce firm adhesion and transendothelial migration of rolling cells during homeostatic traffic to

Figure 4



Binding of CXCL12 to synovial osteoarthritis (OA) and rheumatoid arthritis (RA) ECs and cytokine-treated HUVECs. Endothelial cells (ECs) were incubated with 300 nM biotinylated CXCL12 $\alpha$  and, after extensive washing to remove free chemokine, were labeled with fluorescein isothiocyanate-conjugated avidin. Human umbilical-vein endothelial cells (HUVECs) were treated with tumor necrosis factor- $\alpha$  (TNF- $\alpha$ ; top) or lymphotoxin  $\alpha_1\beta_2$  (LT- $\alpha\beta$ ; middle) for 16 hours before CXCL12 $\alpha$  binding as indicated. Filled histograms show isotype control IgG. The bottom panel shows a summary of normalized mean fluorescence intensity (MFI) data. Error bars show SD. Results are representative of three to five independent experiments in three RA EC, four OA EC and three HUVEC lines. \* $p$  < 0.05 compared with HUVECs, \*\* $p$  < 0.05 compared with cytokine-untreated HUVECs.

lymphoid organs), are coupled downstream of the TNF- $\alpha$  or LT- $\alpha_1\beta_2$  cytokines and are reproduced in chronically inflamed tissues.

Because HSPG expression is a widespread feature of normal or pathological synovial vessels, the need for integrity of the basic motif on the N-terminal end of CXCL12 as well as the sulfation of HSPGs provides potential targets for intervention. In this regard, sulphated heparin or soluble sulphated oligosaccharide derivatives may interfere specifically with the presentation of CXCL12 on ECs [27]. This approach has been experimentally addressed in another CXCL12-related process, the homing of hematopoietic precursors to the bone marrow [10]. In this model, the treatment of animals with fucoidan or related sulphated oligosaccharides increases circulating CXCL12 $\alpha$  and reduces its function in the bone marrow, resulting in the increased mobilization of hematopoietic cells [28,29]. In different inflammatory settings, limited information suggests that heparin or derivatives can also have therapeutic effects [30], although studies on CXCL12 function in this context are yet to be performed. The administration of mutant chemokines unable to bind to HSPGs has also been proposed as an alternative therapeutic approach [31,32].

## Conclusion

Our observations demonstrate interactions between CXCL12 and HSPGs in human RA ECs and suggest that this process is enhanced in the endothelium of a chronically inflammatory environment and *in vitro* under the influence of cytokines, providing a potential point of intervention to downregulate CXCL12 functions on circulating leukocytes.

## Competing interests

The authors declare that they have no competing interests.

## Authors' contributions

BS performed flow cytometry and immunofluorescence studies, FB and FAS prepared the peptides and antibodies used and contributed to drafting and reviewing the manuscript, GP and IGC contributed to the collection and culture of human EC lines, JCR participated in the design of the study and data analysis, and JLP conceived of the study and participated in its design and coordination. All authors read and approved the final manuscript.

## Acknowledgements

This work was supported by grants G03/152 and 05/0060 from Fondo de Investigación Sanitaria, and by Fundación de Investigación Médica Mutua Madrileña (Spain). GP was supported by the post-FSE program from Fondo de Investigación Sanitaria. BS was supported by a grant from Abbott Laboratories to the Fundación Española de Reumatología.

## References

- Springer TA: **Traffic signals for lymphocyte recirculation and leukocyte emigration: the multistep paradigm.** *Cell* 1994, **76**:301-314.

- Campbell JJ, Hedrick J, Zlotnik A, Siani MA, Thompson DA, Butcher EC: **Chemokines and the arrest of lymphocytes rolling under flow conditions.** *Science* 1998, **279**:381-384.
- Stein JV, Rot A, Luo Y, Narasimhaswamy M, Nakano H, Gunn MD, Matsuzawa A, Quackenbush EJ, Dorf ME, von Andrian UH: **The CC chemokine thymus-derived chemotactic agent 4 (TCA-4, secondary lymphoid tissue chemokine, 6Ckine, exodus-2) triggers lymphocyte function-associated antigen 1-mediated arrest of rolling T lymphocytes in peripheral lymph node high endothelial venules.** *J Exp Med* 2000, **191**:61-76.
- Baekkevold ES, Yamanaka T, Palframan RT, Carlsen HS, Reinhold FP, von Andrian UH, Brandtzaeg P, Haraldsen G: **The CCR7 ligand and elc (CCL19) is transcytosed in high endothelial venules and mediates T cell recruitment.** *J Exp Med* 2001, **193**:1105-1112.
- Cinamon G, Shinder V, Alon R: **Shear forces promote lymphocyte migration across vascular endothelium bearing apical chemokines.** *Nat Immunol* 2001, **2**:515-522.
- Shamri R, Grabovsky V, Gauguet JM, Feigelson S, Manevich E, Kolanus W, Robinson MK, Staunton DE, von Andrian UH, Alon R: **Lymphocyte arrest requires instantaneous induction of an extended LFA-1 conformation mediated by endothelium-bound chemokines.** *Nat Immunol* 2005, **6**:497-506.
- Palframan RT, Jung S, Cheng G, Weninger W, Luo Y, Dorf M, Littman DR, Rollins BJ, Zweerink H, Rot A, von Andrian UH: **Inflammatory chemokine transport and presentation in HEV: a remote control mechanism for monocyte recruitment to lymph nodes in inflamed tissues.** *J Exp Med* 2001, **194**:1361-1373.
- Middleton J, Neil S, Wintle J, Clark-Lewis I, Moore H, Lam C, Auer M, Hub E, Rot A: **Transcytosis and surface presentation of IL-8 by venular endothelial cells.** *Cell* 1997, **91**:385-395.
- Middleton J, Patterson AM, Gardner L, Schmutz C, Ashton BA: **Leukocyte extravasation: chemokine transport and presentation by the endothelium.** *Blood* 2002, **100**:3853-3860.
- Ponomaryov T, Peled A, Petit I, Taichman RS, Habler L, Sandbank J, Arenzana-Seisdedos F, Magerus A, Caruz A, Fujii N, et al.: **Induction of the chemokine stromal-derived factor-1 following DNA damage improves human stem cell function.** *J Clin Invest* 2000, **106**:1331-1339.
- Okada T, Ngo VN, Eklund EH, Forster R, Lipp M, Littman DR, Cyster JG: **Chemokine requirements for B cell entry to lymph nodes and Peyer's patches.** *J Exp Med* 2002, **196**:65-75.
- Casamayor-Palleja M, Mondiere P, Amara A, Bella C, Dieu-Nosjean MC, Caux C, Defrance T: **Expression of macrophage inflammatory protein-3 $\alpha$ , stromal cell-derived factor-1, and B-cell-attracting chemokine-1 identifies the tonsil crypt as an attractive site for B cells.** *Blood* 2001, **97**:3992-3994.
- Matthys P, Hatse S, Vermeire K, Wuyts A, Bridger G, Henson GW, De Clercq E, Billiau A, Schols D: **AMD3100, a potent and specific antagonist of the stromal cell-derived factor-1 chemokine receptor CXCR4, inhibits autoimmune joint inflammation in IFN-gamma receptor-deficient mice.** *J Immunol* 2001, **167**:4686-4692.
- Lukacs NW, Berlin A, Schols D, Skerlj RT, Bridger GJ: **AMD3100, a CXCR4 antagonist, attenuates allergic lung inflammation and airway hyperreactivity.** *Am J Pathol* 2002, **160**:1353-1360.
- Gonzalo JA, Lloyd CM, Peled A, Delaney T, Coyle AJ, Gutierrez-Ramos JC: **Critical involvement of the chemotactic axis CXCR4/stromal cell-derived factor-1  $\alpha$  in the inflammatory component of allergic airway disease.** *J Immunol* 2000, **165**:499-508.
- Pablos JL, Santiago B, Galindo M, Torres C, Brehmer MT, Blanco FJ, Garcia-Lazaro FJ: **Synoviocyte-derived CXCL12 is displayed on endothelium and induces angiogenesis in rheumatoid arthritis.** *J Immunol* 2003, **170**:2147-2152.
- Amara A, Lorthioir O, Valenzuela A, Magerus A, Thelen M, Montes M, Virelizier JL, Delepiere M, Baleux F, Lortat-Jacob H, Arenza-Seisdedos F: **Stromal cell-derived factor-1 $\alpha$  associates with heparan sulfates through the first  $\beta$ -strand of the chemokine.** *J Biol Chem* 1999, **274**:23916-23925.
- Sadir R, Baleux F, Grosdidier A, Imberty A, Lortat-Jacob H: **Characterization of the stromal cell-derived factor-1 $\alpha$ -heparin complex.** *J Biol Chem* 2001, **276**:8288-8296.
- De La Luz Sierra M, Yang F, Narazaki M, Salvucci O, Davis D, Yarchoan R, Zhang HH, Fales H, Tosato G: **Differential processing of stromal-derived factor-1 $\alpha$  and stromal-derived factor-1 $\beta$  explains functional diversity.** *Blood* 2004, **103**:2452-2459.

20. Arakaki R, Tamamura H, Premanathan M, Kanbara K, Ramanan S, Mochizuki K, Baba M, Fujii N, Nakashima H: **T134, a small-molecule CXCR4 inhibitor, has no cross-drug resistance with AMD3100, a CXCR4 antagonist with a different structure.** *J Virol* 1999, **73**:1719-1723.
21. Pablos JL, Santiago B, Tsay D, Singer MS, Palao G, Galindo M, Rosen SD: **A HEV-restricted sulfotransferase is expressed in rheumatoid arthritis synovium and is induced by lymphotoxin- $\alpha/\beta$  and TNF- $\alpha$  in cultured endothelial cells.** *BMC Immunol* 2005, **6**:6.
22. Joven B, Gonzalez N, Aguilar F, Santiago B, Galindo M, Alcami J, Pablos JL: **Association between stromal cell-derived factor 1 chemokine gene variant and radiographic progression of rheumatoid arthritis.** *Arthritis Rheum* 2005, **52**:354-356.
23. Blades MC, Ingegnoli F, Wheller SK, Manzo A, Wahid S, Panayi GS, Perretti M, Pitzalis C: **Stromal cell-derived factor 1 (CXCL12) induces monocyte migration into human synovium transplanted onto SCID mice.** *Arthritis Rheum* 2002, **46**:824-836.
24. Carter NM, Ali S, Kirby JA: **Endothelial inflammation: the role of differential expression of N-deacetylase/N-sulphotransferase enzymes in alteration of the immunological properties of heparan sulphate.** *J Cell Sci* 2003, **116**:3591-3600.
25. Ali S, Malik G, Burns A, Robertson H, Kirby JA: **Renal transplantation: examination of the regulation of chemokine binding during acute rejection.** *Transplantation* 2005, **79**:672-679.
26. Drayton DL, Ying X, Lee J, Lesslauer W, Ruddle NH: **Ectopic LT $\alpha\beta$  directs lymphoid organ neogenesis with concomitant expression of peripheral node addressin and a HEV-restricted sulfotransferase.** *J Exp Med* 2003, **197**:1153-1163.
27. Netelenbos T, van den Born J, Kessler FL, Zweegman S, Merle PA, van Oostveen JW, Zwaginga JJ, Huijgens PC, Drager AM: **Proteoglycans on bone marrow endothelial cells bind and present SDF-1 towards hematopoietic progenitor cells.** *Leukemia* 2003, **17**:175-184.
28. Sweeney EA, Lortat-Jacob H, Priestley GV, Nakamoto B, Papayanopoulou T: **Sulfated polysaccharides increase plasma levels of SDF-1 in monkeys and mice: involvement in mobilization of stem/progenitor cells.** *Blood* 2002, **99**:44-51.
29. Hidalgo A, Peired AJ, Weiss LA, Katayama Y, Frenette PS: **The integrin  $\alpha$ M $\beta$ 2 anchors hematopoietic progenitors in the bone marrow during enforced mobilization.** *Blood* 2004, **104**:993-1001.
30. Lever R, Page CP: **Novel drug development opportunities for heparin.** *Nat Rev Drug Discov* 2002, **1**:140-148.
31. Johnson Z, Kosco-Vilbois MH, Herren S, Cirillo R, Muzio V, Zaratini P, Carbonatto M, Mack M, Smailbegovic A, Rose M, et al.: **Interference with heparin binding and oligomerization creates a novel anti-inflammatory strategy targeting the chemokine system.** *J Immunol* 2004, **173**:5776-5785.
32. Shaw JP, Johnson Z, Borlat F, Zwahlen C, Kungl A, Roulin K, Harrenga A, Wells TN, Proudfoot AE: **The X-ray structure of RANTES: heparin-derived disaccharides allows the rational design of chemokine inhibitors.** *Structure* 2004, **12**:2081-2093.