

## Research article

## Open Access

# Rapid and sustained improvements in health-related quality of life, fatigue, and other patient-reported outcomes in rheumatoid arthritis patients treated with certolizumab pegol plus methotrexate over 1 year: results from the RAPID 1 randomized controlled trial

Vibeke Strand<sup>1</sup>, Philip Mease<sup>2</sup>, Gerd R Burmester<sup>3</sup>, Enkeleida Nikaï<sup>4</sup>, Geoffroy Coteur<sup>5</sup>, Ronald van Vollenhoven<sup>6</sup>, Bernard Combe<sup>7</sup>, Edward C Keystone<sup>8</sup> and Arthur Kavanaugh<sup>9</sup>

<sup>1</sup>Division of Immunology/Rheumatology, Stanford University School of Medicine, 306 Ramona Road, Palo Alto, CA, 94028, USA

<sup>2</sup>Seattle Rheumatology Associates, 1101 Madison St # 1000, Seattle, WA, 98104, USA

<sup>3</sup>Department of Rheumatology and Clinical Immunology, Charité - University Medicine, Humboldt University of Berlin, Unter den Linden 6, Berlin, D-10099, Germany

<sup>4</sup>Life Sciences, Business & Decision, Rue Saint Lambert 141, 1200 Brussels, Belgium

<sup>5</sup>Outcomes & Access - Immunology, UCB SA, Allée de la Recherche 60, B-1070, Brussels, Belgium

<sup>6</sup>Rheumatology Unit, Karolinska Institute, SE-171 77, Stockholm, Sweden

<sup>7</sup>Immuno-Rhumatologie, Hôpital Lapeyronie, Université Montpellier 1, Montpellier, F-34000, France

<sup>8</sup>Rebecca MacDonald Centre for Arthritis & Autoimmune Disease, Mount Sinai Hospital, 60 Murray St., Room 2-006, Box 4, Toronto, Ontario, M5T 3L9, Canada

<sup>9</sup>Division of Rheumatology, Allergy and Immunology, University of California in San Diego, 9500 Gilman Drive, Mail code 0943, La Jolla, CA, 92093, USA

Corresponding author: Vibeke Strand, [vstrand@aol.com](mailto:vstrand@aol.com)

Received: 10 Aug 2009 Revisions requested: 4 Sep 2009 Revisions received: 6 Oct 2009 Accepted: 12 Nov 2009 Published: 12 Nov 2009

*Arthritis Research & Therapy* 2009, **11**:R170 (doi:10.1186/ar2859)

This article is online at: <http://arthritis-research.com/content/11/6/R170>

© 2009 Strand *et al.*; licensee BioMed Central Ltd.

This is an open access article distributed under the terms of the Creative Commons Attribution License (<http://creativecommons.org/licenses/by/2.0>), which permits unrestricted use, distribution, and reproduction in any medium, provided the original work is properly cited.

## Abstract

**Introduction** The objective of this study was to assess the impact of certolizumab pegol (CZP) treatment on health-related quality of life (HRQoL), fatigue and other patient-reported outcomes (PROs) in patients with rheumatoid arthritis (RA).

**Methods** Patients with active RA (N = 982) were randomized 2:2:1 to subcutaneous CZP (400 mg at weeks 0, 2 and 4; followed by CZP 200 mg or 400 mg) plus methotrexate (MTX) every other week, or placebo (PBO) plus MTX. PRO assessments included HRQoL, fatigue, physical function, arthritis pain and disease activity. Adjusted mean changes from baseline in all PROs were obtained using analysis of covariance (ANCOVA) applying last observation carried forward (LOCF) imputation. The proportion of patients achieving clinically meaningful improvements in each PRO was obtained using logistic regression and by applying non-responder imputation to missing values after rescue medication or withdrawal. The

correlations between PRO responses and clinical responses were also assessed by tetrachoric correlation using non-responder imputation.

**Results** Patients treated with CZP plus MTX reported significant ( $P < 0.001$ ), clinically meaningful improvements in HRQoL at the first assessment (week 12); reductions in fatigue, disease activity and pain and improvements in physical function were reported at week 1. In particular, CZP-treated patients reported improvements in mental health. Mean changes from baseline in the SF-36 Mental Component Summary (MCS) at week 52 for CZP 200 mg and 400 mg plus MTX, and PBO plus MTX were 6.4, 6.4 and 2.1, respectively ( $P < 0.001$ ). In addition, mental health and vitality scores in CZP-treated patients approached age- and gender-adjusted US population norms. Improvements in all PROs were sustained. Similar benefits were reported with both CZP doses. Changes in SF-36 MCS scores

ANCOVA: analysis of covariance; CZP: certolizumab pegol; DAS: disease activity score; DMARD: disease modifying antirheumatic drug; FAS: fatigue assessment scale; HAQ-DI: health assessment questionnaire - disability index; HRQoL: health-related quality of life; ITT: intent to treat; LOCF: last observation carried forward; MCID: minimal clinically important difference; MCS: mental component summary; MTX: methotrexate; NRS: numeric rating scale; PBO: placebo; PCS: physical component summary; PRO: patient-reported outcomes; PtGA: patient's global assessment of disease activity; RA: rheumatoid arthritis; RAPID 1: RA Prevention of Structural Damage 1; SF-36: short-form 36-item health survey; TNF: tumor necrosis factor; VAS: visual analog scale.

had the lowest correlation with disease activity scores (DAS28) and American College of Rheumatology 20% improvement (ACR20) response rates, while improvements in pain showed the highest correlation.

**Conclusions** Treatment with CZP plus MTX resulted in rapid

and sustained improvements in all PROs, indicating that the benefits of CZP extend beyond clinical efficacy endpoints into areas that are more relevant and meaningful for patients on a daily basis.

**Trial Registration** ClinicalTrials.gov NCT00152386.

## Introduction

Rheumatoid arthritis (RA) is a common severe inflammatory disorder characterized by progressive joint damage and functional impairments [1]. It has been widely reported that the daily-life burdens associated with RA, including functional impairment, chronic and debilitating pain, inability to participate in desired family, social and leisure activities and reduced productivity at work and within the home, have a profound impact on an individual's health-related quality of life (HRQoL) [2-5]. As such, HRQoL is now considered to be an essential outcome measure in many clinical studies [6] and the American College of Rheumatology (ACR), the European League Against Rheumatism (EULAR) and the Outcomes Measures in Rheumatology (OMERACT) have recognized the importance of measuring functioning and well-being from the patient's perspective in clinical trials [7].

Another multidimensional burden experienced by almost all RA patients is fatigue. RA-related fatigue has been reported to be more extreme than normal tiredness, to restrict patients' abilities to fulfill their normal family roles and to take a severe emotional toll on patients [8]. Furthermore, an examination of both the physical and mental components of fatigue revealed that high levels of mental fatigue coincide with elevated levels of bodily pain and physical limitations in patients with RA [9].

Assessing patient's burden is an important component in monitoring both the progression of disease and the effectiveness of RA therapies. Physician-reported measures offer the physician's assessment of patient's health, while patient-reported assessments of both the physical (fatigue and pain) and mental burden of RA reflect the impact of disease on everyday life. Moreover, some of these symptoms (especially those that are mental/emotional in nature) are known only to, and can thus only be reported by, patients. An analysis of randomized controlled trials has shown that patient-reported outcomes demonstrate better discrimination of the treatment effect than more traditional physician-reported outcomes [10,11], and are, therefore, the most sensitive tools for assessing the impact of therapy on RA symptoms [12]. Taken together, the patient and physician-reported assessments are complementary and provide a holistic picture of a patient's disease state or well-being.

The efficacy and safety of certolizumab pegol (CZP), the only PEGylated anti-TNF for the treatment of RA, has been established in several phase III clinical trials [13-15]. Previously-reported clinical results from the RA Prevention of Structural

Damage 1 (RAPID 1) clinical trial have demonstrated that CZP, dosed at 200 mg or 400 mg every other week plus methotrexate (MTX), provides rapid reductions in the signs and symptoms of active RA (as assessed by ACR responder rates) and improvements in disease activity (as assessed by disease activity scores [DAS28]) in MTX inadequate responders [15]. In this paper, we present the patient-reported outcome (PRO) results from the RAPID 1 trial, including HRQoL, fatigue, physical function, pain and patient's global assessment of disease activity. To further explore the relation between the patient-reported and clinical (physician-reported) assessments, we also examined the correlations between the PROs and the ACR20 and DAS responses.

## Materials and methods

### Patients

Full details regarding patient inclusion and exclusion criteria and randomization for RAPID 1 were previously published [15]. In brief, patients were aged 18 years or older with active RA (according to the 1987 ACR RA classification criteria [16]) with an inadequate response to MTX therapy ( $\geq 10$  mg weekly for  $\geq 6$  months with stable doses for  $\geq 2$  months prior to baseline). Patients were ineligible if they had previously failed to respond to treatment with a TNF inhibitor. All patients provided written informed consent.

### Study design

RAPID 1 was a phase III, double-blind, randomized, placebo (PBO)-controlled, multicenter trial in which patients with active RA were randomized 2:2:1 to receive subcutaneous CZP (400 mg weeks 0, 2 and 4 followed by CZP 200 mg or 400 mg) plus MTX every other week, or PBO plus MTX. Patients not achieving ACR20 responses at weeks 12 and 14 were to be withdrawn from treatment per protocol at week 16. These patients, and those who completed RAPID 1, were eligible to enter an ongoing open-label extension study of CZP 400 mg plus MTX every other week. The study (NCT00152386) was conducted in accordance with the International Conference on Harmonisation E6 Note for Guidance on Good Clinical Practice (CPMP/ICH/135/95) and Declaration of Helsinki. All elements of the CONSORT checklist for reporting randomized clinical trials have been previously published in the primary RAPID 1 publication [15]. Institutional review boards or ethics committees approved the protocol at each center, and all patients provided written consent.

**Table 1**

**Baseline disease activity and PRO scores (ITT population)**

Characteristic, mean (SD)	CZP 200 mg + MTX (n = 393)	CZP 400 mg + MTX (n = 390)	PBO + MTX (n = 199)
DAS28, range 0-10	6.9 (0.8)	6.9 (0.8)	7.0 (0.9)
PtGA VAS, range 0-100 mm	63.1 (20.3)	64.1 (18.3)	64.2 (19.6)
Pain VAS, range 0-100 mm	62.1 (20.0)	63.8 (17.2)	63.6 (19.9)
HAQ-DI, range 0-3	1.7 (0.6)	1.7 (0.6)	1.7 (0.6)
Fatigue NRS, range 0-10	6.4 (2.0)	6.5 (1.9)	6.7 (2.0)
SF-36			
PCS, range 0-100*	30.9 (6.5)	30.8 (6.8)	30.5 (5.8)
MCS, range 0-100*	40.0 (11.2)	39.3 (11.1)	38.6 (11.4)
Domains, range 0-100			
Physical Functioning	33.4 (21.4)	32.9 (21.2)	32.0 (20.1)
Role Physical	13.3 (23.7)	12.9 (25.4)	11.2 (20.8)
Bodily Pain	30.6 (15.3)	28.9 (15.9)	28.5 (14.7)
General Health	35.3 (16.5)	35.9 (17.5)	34.9 (15.6)
Vitality	35.8 (18.0)	36.1 (18.6)	32.9 (17.4)
Social Functioning	50.9 (23.8)	48.1 (24.0)	46.6 (25.2)
Role Emotional	32.4 (39.1)	28.9 (38.1)	30.9 (38.7)
Mental Health	53.8 (20.1)	53.5 (20.7)	52.2 (21.2)

\* mean US population normative value equals 50

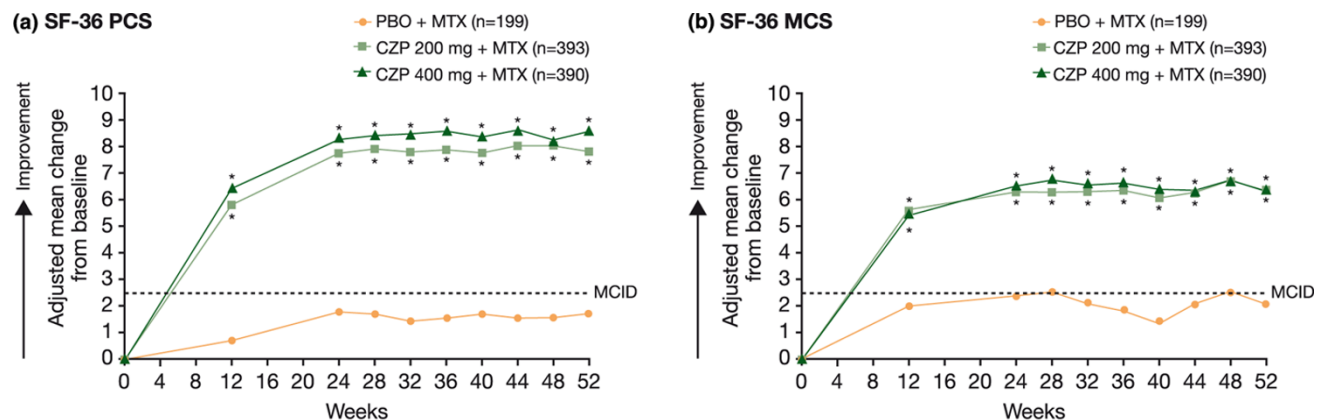
CZP = certolizumab pegol; DAS28 = disease activity score; HAQ-DI = health assessment questionnaire-disability index; ITT = intent to treat; MCS = mental component summary; MTX = methotrexate; NRS = numeric rating scale; PBO = placebo; PCS = physical component summary; PRO = patient-reported outcomes; PtGA = patient's global assessment of disease activity; SD = standard deviation; SF-36 = short-form 36-item health survey; VAS = visual analog scale.

**Patient-reported outcomes**

All patient-reported outcomes assessed in the RAPID 1 trial were secondary endpoints. These PROs included evaluations of concepts such as HRQoL, fatigue and the patient-reported components of the ACR core set criteria (physical function, arthritis pain and patient's global assessment of disease activity). The PRO instruments assessed in RAPID 1 have been

shown to provide valid and reliable data in prior RA research. They were properly implemented in the CZP trials in terms of patient and investigator training, timing of assessments, linguistic validations, and pre-specification of analysis in the statistical analysis plan. Psychometric properties of the data based on the endpoints of the patient-reported outcomes are

**Figure 1**



Adjusted mean change from baseline in SF-36 PCS (a) and MCS (b) scores over 52 weeks (ITT population, LOCF). \**P* < 0.001 for CZP vs PBO by ANCOVA (LOCF imputation). ANCOVA = analysis of covariance; CZP = certolizumab pegol; ITT = intent to treat; LOCF = last observation carried forward; MCID = minimal clinically important difference; MCS = mental component summary; MTX = methotrexate; PBO = placebo; PCS = physical component summary; SF-36 = short-form 36-item health survey.

**Table 2**

**Improvements in health-related quality of life at weeks 12, 24 and 52 (ITT population, LOCF)\***

	Week 12			Week 24			Week 52		
	CZP 200 mg + MTX (n = 393)	CZP 400 mg + MTX (n = 390)	PBO + MTX (n = 199)	CZP 200 mg + MTX (n = 393)	CZP 400 mg + MTX (n = 390)	PBO + MTX (n = 199)	CZP 200 mg + MTX (n = 393)	CZP 400 mg + MTX (n = 390)	PBO + MTX (n = 199)
<b>PCS</b>									
Mean score (SD)	36.1 (8.9)	36.8 (8.4)	30.7 (7.1)	37.8 (9.5)	38.4 (8.8)	31.4 (7.3)	38.1 (9.5)	38.9 (8.9)	31.5 (7.4)
Mean change from BL	5.8 (0.5)†	6.4 (0.6)†	0.7 (0.6)	7.7 (0.4)†	8.3 (0.4)†	1.8 (0.6)	7.8 (0.4)†	8.6 (0.4)†	1.7 (0.6)
% MCID	38.2†	36.5†	21.4	46.6†	51.7†	10.9	42.2†	46.1†	11.5
<b>MCS</b>									
Mean score (SD)	45.5 (11.5)	45.7 (11.6)	41.4 (10.8)	45.6 (11.5)	45.6 (11.6)	41.3 (10.7)	45.8 (11.4)	45.4 (11.5)	41.1 (10.8)
Mean change from BL	5.6 (0.7)†	5.5 (0.7)†	2.0 (0.8)	6.3 (0.6)†	6.5 (0.6)†	2.3 (0.8)	6.4 (0.6)†	6.4 (0.6)†	2.1 (0.8)
% MCID	36.0‡	33.3	28.1	41.1†	41.9†	13.0	39.2†	38.1†	9.9
<b>Physical Functioning</b>									
Mean score (SD)	45.1 (25.8)	46.1 (24.6)	31.2 (21.0)	47.6 (26.5)	48.8 (24.7)	33.3 (22.2)	49.3 (26.9)	50.3 (24.9)	33.1 (22.3)
Mean change from BL	11.4 (1.4)†	12.2 (1.4)†	-1.0 (1.7)	15.6 (1.2)†	16.5 (1.2)†	1.9 (1.6)	16.7 (1.2)†	17.9 (1.2)†	1.7 (1.6)
% MCID	32.1†	33.6†	18.4	42.0†	46.6†	10.7	38.0†	44.3†	9.7
<b>Role Physical</b>									
Mean score (SD)	34.1 (38.3)	33.9 (38.5)	15.0 (28.0)	37.2 (40.4)	38.6 (40.2)	18.0 (30.2)	37.7 (40.3)	39.2 (41.8)	17.3 (30.2)
Mean change from BL	24.8 (2.4)†	24.2 (2.5)†	6.4 (2.9)	27.8 (2.0)†	29.1 (2.0)†	9.4 (2.8)	26.9 (2.1)†	29.1 (2.0)†	8.1 (2.9)
% MCID	24.9†	24.5‡	13.9	33.0†	36.8†	10.3	32.2†	31.1†	8.2
<b>Bodily Pain</b>									
Mean score (SD)	47.8 (20.1)	49.6 (20.4)	33.1 (18.5)	51.4 (22.3)	53.4 (20.8)	33.2 (19.4)	52.0 (22.8)	53.9 (22.2)	34.0 (20.1)
Mean change from BL	18.0 (1.3)†	20.2 (1.4)†	4.5 (1.6)	23.3 (1.1)†	25.8 (1.1)†	6.3 (1.5)	23.5 (1.1)†	26.2 (1.1)†	6.8 (1.6)
% MCID	45.9‡	43.3‡	33.3	52.5†	58.2†	15.9	48.8†	50.7†	14.9
<b>General Health</b>									
Mean score (SD)	44.0 (18.9)	48.4 (19.6)	36.9 (18.0)	47.4 (19.6)	48.5 (19.7)	37.2 (17.1)	47.5 (20.3)	47.6 (19.2)	36.9 (16.6)

**Table 2 (Continued)****Improvements in health-related quality of life at weeks 12, 24 and 52 (ITT population, LOCF)\***

Mean change from BL	8.9 (1.1)†	11.1 (1.1)†	2.4 (1.3)	13.2 (0.9)†	14.0 (0.9)†	3.7 (1.2)	13.0 (0.9)†	13.0 (0.9)†	3.1 (1.3)
% MCID	31.1	32.7‡	24.2	44.3†	45.7†	11.3	40.3†	40.6†	10.3
Vitality									
Mean score (SD)	48.2 (21.4)	50.0 (21.3)	37.0 (19.1)	50.9 (21.6)	51.4 (21.3)	38.3 (19.9)	50.7 (21.7)	51.1 (20.9)	38.4 (20.0)
Mean change from BL	12.9 (1.3)†	14.4 (1.4)†	2.8 (1.6)	15.5 (1.1)†	16.2 (1.1)†	4.7 (1.5)	15.1 (1.0)†	15.6 (1.0)†	4.5 (1.5)
% MCID	35.5‡	35.3‡	27.0	45.1†	45.7†	12.2	40.8†	42.8†	11.2
Social Functioning									
Mean score (SD)	64.8 (25.2)	64.0 (24.4)	50.6 (25.1)	66.6 (25.7)	65.7 (24.4)	50.8 (25.7)	67.2 (25.9)	66.2 (25.3)	50.6 (25.4)
Mean change from BL	15.6 (1.6)†	14.7 (1.6)†	2.6 (1.9)	18.3 (1.3)†	18.1 (1.3)†	3.4 (1.8)	18.5 (1.3)†	18.6 (1.3)†	3.2 (1.8)
% MCID	39.5‡	36.8	30.1	45.3†	48.3†	11.7	43.5†	44.4†	11.2
Role Emotional									
Mean score (SD)	50.4 (43.0)	50.8 (43.9)	37.4 (41.2)	50.2 (42.9)	54.1 (43.4)	36.3 (40.9)	52.8 (43.0)	53.9 (43.5)	35.7 (40.6)
Mean change from BL	19.2 (2.8)‡	19.3 (2.9)‡	6.6 (3.3)	22.2 (2.2)†	26.4 (2.2)†	7.8 (3.1)	23.9 (2.3)†	26.1 (2.2)†	7.1 (3.1)
% MCID	25.5‡	22.4	17.4	31.7†	33.2†	10.8	29.0†	29.7†	9.2
Mental Health									
Mean score (SD)	64.1 (19.4)	64.5 (20.2)	56.1 (19.7)	64.3 (20.1)	63.8 (20.2)	56.3 (21.1)	64.3 (20.4)	63.3 (19.9)	55.8 (21.1)
Mean change from BL	9.3 (1.2)†	8.9 (1.2)†	2.1 (1.4)	11.0 (1.0)†	10.5 (1.0)†	3.7 (1.3)	10.7 (1.0)†	9.9 (1.0)†	3.0 (1.4)
% MCID	33.3‡	27.4	27.0	40.8†	37.1†	14.3	37.3†	33.9†	11.2

\*SF-36 PCS, MCS and domain scores, adjusted mean change from baseline, and percentage of patients reporting improvements meeting or exceeding MCID. Changes from baseline were analyzed using ANCOVA with region and treatment as factors, and baseline as covariate (using LOCF imputation of missing data).

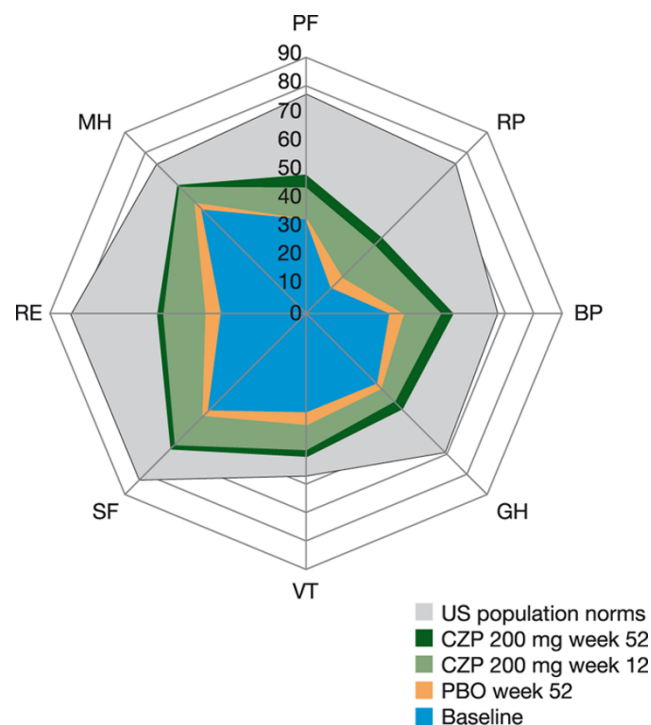
† $P < 0.001$ ; ‡ $P < 0.05$ .

BL = baseline; CZP = certolizumab pegol; ITT = intent to treat; LOCF = last observation carried forward; MCID = minimal clinically important difference; MCS = mental component summary; MTX = methotrexate; PBO = placebo; PCS = physical component summary; SD = standard deviation; SF-36 = short-form 36-item health survey.

consistent with prior evidence of the measurement properties for each instrument.

HRQoL was assessed using the Short-Form 36-Items (SF-36) health survey (Version 1.0 standard recall), which is a widely used generic HRQoL instrument with numerous studies documenting its validity and reliability as an accurate measure of generic health concepts in RA [4,10,17-21]. SF-36 assesses

eight domains: Physical Functioning, Role Physical, Bodily Pain, General Health, Vitality, Social Functioning, Role Emotional and Mental Health, scored from 0 to 100, with higher scores indicating better HRQoL [22]. The Physical Component Summary (PCS) and the Mental Component Summary (MCS) scores were obtained from normalized and z-transformed domain scores, with normative values of 50 and standard deviations of 10. Minimum clinically important differences

**Figure 2**

Spidergram of SF-36 domains at baseline and weeks 12 and 52 (ITT population, LOCF). Physical domains: Physical Function (PF), Role Physical (RP), Bodily Pain (BP), General Health (GH). Mental domains: Vitality (VT), Social Function (SF), Role Emotional (RE), Mental Health (MH). Domain scores are plotted from 0 (worst) at the center to 100 (best) at the outside; demarcations along axes of the domains present changes of 10 points, representing 1 - 2 times MCID. As the RAPID 1 protocol included RA subjects recruited outside North America, available US normative data offer a 'benchmark', but less realistic goal for therapy. Changes from baseline for all SF-36 domains were statistically significant for CZP versus PBO at Weeks 12 and 52;  $P < 0.05$ . CZP = certolizumab pegol; ITT = intent to treat; LOCF = last observation carried forward; MCID = minimal clinically important difference; PBO = placebo; RA = rheumatoid arthritis; RAPID 1 = RA Prevention of Structural Damage 1; SF-36 = short-form 36-item health survey.

(MCIDs) for the SF-36 domains are defined as a 5.0 or more point increase from baseline and a 2.5 or more point increase from baseline for PCS and MCS scores [23]. Baseline SF-36 domain scores were compared with US population norms adjusted for the age and gender distribution of the trial population.

Fatigue (weariness, tiredness) over the past week was evaluated using the Fatigue Assessment Scale (FAS), a numeric rating scale (NRS) from 0 to 10 with higher scores indicating greater fatigue [24]. The MCID for the FAS is 10% of the scale range, corresponding to a one-point change [25]. Physical function was assessed by the Health Assessment Questionnaire-Disability Index (HAQ-DI), evaluating eight activities of daily living [26,27]. HAQ-DI scores range from 0 to 3, with higher scores indicating lower levels of physical functioning.

Improvements of 0.22 or more points from baseline represent the HAQ-DI MCID [28]. Patient's arthritis pain and patient's global assessment of disease activity (PtGA) were evaluated using 0 to 100 mm visual analog scales (VAS), where higher scores indicate greater pain and disease activity. MCIDs for both pain VAS and PtGA are defined as 10 mm improvements from baseline [25,28-30].

The SF-36 was completed at baseline, week 12 and every 12 weeks thereafter until week 52 or withdrawal. All other patient-reported outcomes were assessed at baseline, weeks 1 and 2 and every 2 weeks until week 20, followed by every 4 weeks until week 52 or early withdrawal. Fatigue (FAS) was additionally assessed at weeks 5 and 9.

### Statistical analyses

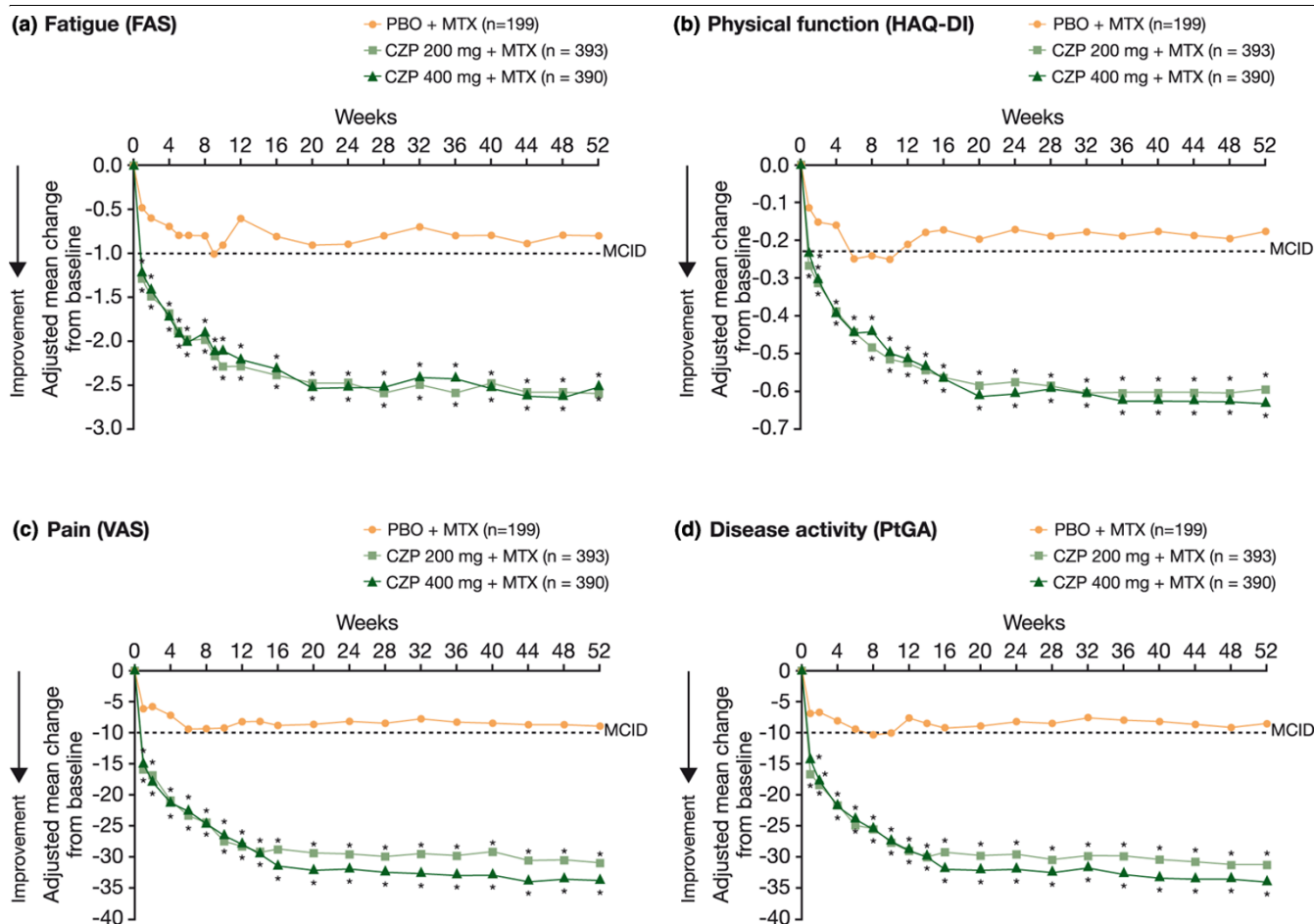
Analyses were conducted on the intent-to-treat (ITT) population, which included all randomized patients receiving at least 1 dose of study treatment. Changes from baseline in PRO scores were analyzed using Analysis of Covariance (ANCOVA) with region and treatment as factors, and baseline score as covariate (using last observation carried forward (LOCF) imputation of missing data). Sensitivity analyses were performed using the repeated measures direct likelihood method. The proportions of patients reporting improvements equal to or greater than the determined MCID for each PRO (*post hoc* analyses) were compared using repeated-measures logistic regression with region, treatment, time and treatment by time interaction as factors and baseline score as covariate. Response rates (i.e., proportions of patients with clinically meaningful improvements) in pain VAS, HAQ-DI, fatigue NRS, and SF-36 PCS and MCS were compared at week 52 to clinical response rates, defined as a decrease from baseline in DAS28 of 1.2 units or an ACR20 response, by cross tabulation. For analysis of response rates, patients with missing data after rescue medication intake or withdrawal were imputed with a conservative approach of non-responders.

## Results

### Patients

A total of 982 patients were randomized in RAPID 1: 393 to CZP 200 mg plus MTX, 390 to CZP 400 mg plus MTX, and 199 to PBO plus MTX. Of these, 255 (64.9%), 274 (70.3%) and 43 (21.6%) completed 52 weeks of treatment, respectively [28]. At baseline, 82% of patients were female, with mean age 52 years, 77% rheumatoid factor positive, mean disease duration 6.2 years, and having failed a mean of 1.4 disease-modifying antirheumatic drugs (DMARDs; excluding MTX). The burden of RA at baseline was significant, as evidenced by patient-reported global assessment of disease activity, pain, physical function, and fatigue scores (Table 1). In particular, SF-36 domain scores at baseline were markedly lower than age- and gender-matched US population norms, and SF-36 MCS and PCS scores reflected a significant psychological burden as well as physical impairments.

**Figure 3**



Improvements in fatigue (a), physical function (b), pain (c) and disease activity (d) over 52 weeks (ITT population, LOCF). \* $P < 0.001$  for CZP vs PBO by ANCOVA (LOCF imputation). ANCOVA = analysis of covariance; CZP = certolizumab pegol; FAS = fatigue assessment scale; HAQ-DI = health assessment questionnaire - disability index; ITT = intent to treat; LOCF = last observation carried forward; MCID = minimal clinically important difference; MTX = methotrexate; PBO = placebo; PtGA = patient's global assessment of disease activity; VAS = visual analog scale.

**Health-related quality of life and fatigue**

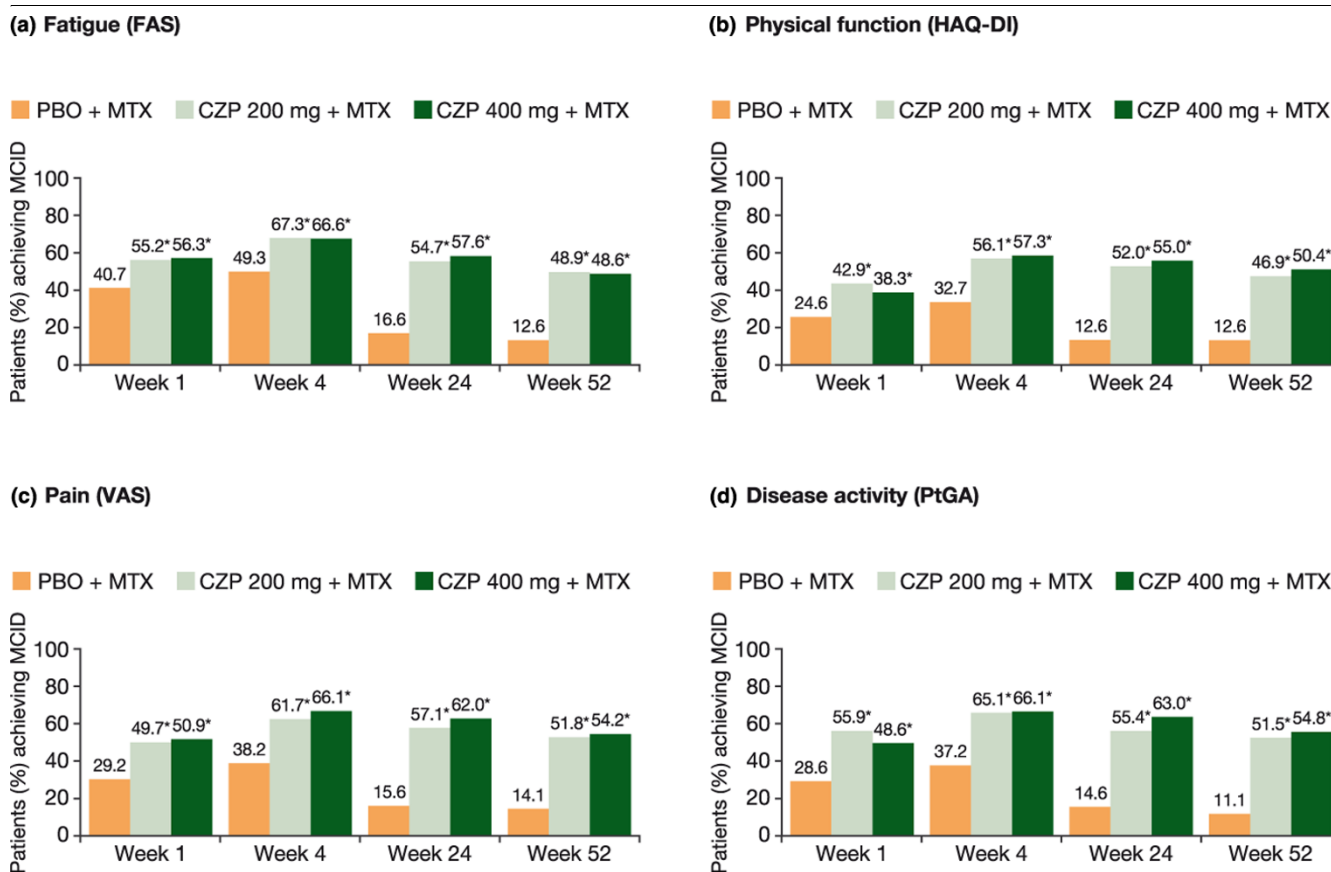
RA patients receiving CZP plus MTX reported statistically significant improvements in HRQoL compared with PBO plus MTX by the first post-baseline assessment (week 12;  $P < 0.001$ ); improvements in all eight SF-36 domains (Table 2), PCS (Figure 1a), and MCS (Figure 1b) were sustained to week 52. In particular, mean changes from baseline at week 12 for the CZP 200 mg plus MTX, CZP 400 mg plus MTX, and PBO plus MTX groups were 5.6, 5.5 and 2.0 for the SF-36 MCS, respectively (Table 2;  $P < 0.001$ ). Significantly more patients treated with CZP plus MTX than PBO plus MTX also reported improvements in SF-36 MCS equal to or greater than the MCID from weeks 12 to 52 (Table 2;  $P < 0.05$ ).

Figure 2 shows the SF-36 domain scores for the CZP 200 mg and PBO groups compared with normative values from an age/gender-matched US population. Baseline domain scores reflect the largest decrements in the Role Emotional mental domain, and the physical domains of Role Physical and Physi-

cal Function (Figure 2). Improvements exceeding MCID were evident in all domains at week 12 and were sustained through week 52, with the Mental Health and Vitality domains approaching US population normative values.

Statistically significant and clinically meaningful reductions in fatigue were reported by more patients treated with CZP plus MTX than PBO plus MTX throughout the study ( $P < 0.001$ ; Figure 3a). At week 1, mean changes from baseline in FAS were -1.3 and -1.2 for CZP 200 mg and 400 mg plus MTX, respectively, compared with -0.5 for the PBO plus MTX group ( $P < 0.001$ ), and by the end of the study (week 52), mean changes from baseline were -2.6, -2.5 and -0.8, respectively ( $P < 0.001$ ). Statistically more CZP plus MTX patients also reported reductions in fatigue equal to or greater than the MCID compared with PBO plus MTX ( $P < 0.001$ ; Figure 4a). At week 52, 48.9% and 48.6% of CZP 200 mg- and 400 mg-treated patients reported fatigue reductions equal to or

Figure 4



Patients (%) achieving minimum clinically important differences in fatigue (a), physical function (b), pain (c), and disease activity (d) over 52 weeks (ITT population, LOCF). \* $P < 0.001$  for CZP vs PBO by repeated measures logistic regression. CZP = certolizumab pegol; FAS = fatigue assessment scale; HAQ-DI = health assessment questionnaire - disability index; ITT = intent to treat; LOCF = last observation carried forward; MCID = minimal clinically important difference; MTX = methotrexate; PBO = placebo; PtGA = patient's global assessment of disease activity; VAS = visual analog scale.

greater than the MCID compared with only 12.6% of PBO-treated patients ( $P < 0.001$ ).

**Patient-reported physical function, pain and global assessment of disease activity**

Rapid, statistically significant improvements in physical function, as assessed by HAQ-DI, were reported by patients treated with CZP plus MTX compared with PBO plus MTX (Figure 3b;  $P < 0.001$ ). By the end of the study at week 52, mean scores were 1.1 for both CZP plus MTX treatment groups, respectively, compared with baseline scores of 1.7. Significantly more CZP plus MTX-treated patients than PBO plus MTX-treated patients reported HAQ-DI improvements equal to or greater than the MCID throughout the trial ( $P < 0.001$ ). CZP-treated patients also reported statistically significant improvements in physical function that met or exceeded MCID as reported above for SF-36 PCS (Figure 1a) and Physical Functioning domain scores (Table 2).

CZP-treated patients reported significant improvements from baseline in pain VAS (Figure 3c) and patient's global assessment of disease activity (Figure 3d;  $P < 0.001$ ), evident at week 1 and sustained through week 52. Significantly more CZP plus MTX-treated patients than PBO plus MTX-treated patients also reported clinically meaningful reductions in pain (Figure 4c) and improvements in global assessment of disease activity (Figure 4d) throughout the trial ( $P < 0.001$ ). Results were similar regardless of CZP dose (200 mg or 400 mg).

Sensitivity analyses showed that improvements in all PROs were consistent with the LOCF results.

**Comparison of patient-reported outcomes with DAS28 and ACR20 response rates**

To explore the relation between the patient-reported outcomes and the physician-reported assessments of disease, PRO responses (as defined by improvements in physical function, pain, fatigue and SF-36 scores equal to or greater than the MCIDs) were compared with DAS28 responses (defined



**Table 3****PRO response by clinical response\* at week 52 (CZP 200 mg plus MTX group, ITT population)**

		ACR20 response by (%)											
		SF-36 PCS		SF-36 MCS		HAQ-DI		Pain		FAS		PtGA	
Clinical response		No	Yes	No	Yes	No	Yes	No	Yes	No	Yes	No	Yes
PRO response	No	45.5	14.7	43.4	19.5	44.4	8.7	44.4	3.8	44.1	7.1	86.9	2.0
	Yes	1.0	38.8	3.1	33.9	2.6	44.4	1.0	38.2	2.8	45.9	0	11.1
	Tetrachoric correlation (ASE)	0.9450 (0.0178)		0.8389 (0.0356)		0.9504 (0.0152)		0.9804 (0.0076)		0.9574 (0.0135)		0.9996 (0.0053)	
		DAS response by (%)											
		SF-36 PCS		SF-36 MCS		HAQ-DI		Pain		FAS		PtGA	
Clinical response		No	Yes	No	Yes	No	Yes	No	Yes	No	Yes	No	Yes
PRO response	No	44.2	16.5	43.2	20.4	43.6	10.0	43.6	5.1	43.9	7.7	44.1	4.9
	Yes	1.0	38.2	2.1	34.4	2.1	44.4	2.1	49.2	1.8	46.7	1.5	49.5
	Tetrachoric correlation (ASE)	0.9344 (0.0204)		0.8674 (0.0322)		0.9496 (0.0156)		0.9776 (0.0085)		0.9672 (0.0114)		0.9833 (0.0069)	

\*Clinical response = DAS or ACR20 response.

ACR20 = American College of Rheumatology 20% improvement; ASE = asymptomatic standard error; CZP = certolizumab pegol; DAS = disease activity score; FAS = fatigue assessment scale; HAQ-DI = health assessment questionnaire-disability index; ITT = intent to treat; MCS = mental component summary; MTX = methotrexate; PtGA = patient's global assessment; PCS = physical component summary; PRO = patient-reported outcomes; SF-36 = short-form 36-item health survey

as a decrease from baseline of  $\geq 1.2$ ) and ACR20 response rates at week 52. In general, PRO responses were in agreement with clinical responses as determined by either improvements in RA signs and symptoms (ACR20 response rates) or decrease in disease activity (DAS28 scores; Table 3). As expected, classification of response according to physical function and pain was highly correlated with ACR20 response rates, with 88.8% and 93.6% of patients treated with CZP 200 mg plus MTX being classified the same by physical function/ACR20 and pain/ACR20, respectively. Correlations between fatigue and ACR20 responses were also high (90.0%) as were those between patient's global assessment of disease activity (98.0%), while changes in HRQoL (SF-36 PCS and MCS scores) had the lowest correlation with ACR20 responses (84.3% and 77.4%, respectively).

Results were similar for correlations between PRO responses and DAS28 responses, with SF-36 PCS and MCS scores showing the lowest correlations with DAS28 responses (82.4% and 77.6%, respectively) and physical function, fatigue, pain and global assessment of disease activity showing the highest correlations (88.0%, 90.6%, 92.8% and 93.6%, respectively).

## Discussion

Over the past decade, the management of RA has changed dramatically as a result of the development of the TNF inhibitors, which have resulted in improved long-term outcomes. Initially, improved clinical responses achieved by the use of TNF inhibitors were the primary focus of clinicians. Now the RA burden as reported by patients has come to be recognized as a significant and treatable component of the disease. Utilized together, clinical and patient-reported outcomes reflect the spectrum of patients' disease and best reflect the overall effectiveness of TNF inhibitor therapy in RA.

Concepts that have traditionally been shown to be among the most important to RA patients are physical function, pain, and tiredness (fatigue). However, it is now well-documented that mental health disturbance is an important consequence of RA and a central component of the assessment of HRQoL. Therefore in RAPID 1, the concepts that were assessed as reported by the patients were HRQoL (including emotional, social and physical components), fatigue, physical function, arthritis pain, and global assessment of disease activity.

Patients in this trial (RAPID 1) had substantially diminished HRQoL at baseline compared with age- and gender-matched US population norms (particularly in Vitality, Role Emotional, Physical Function, Role Physical and Bodily Pain), as illustrated by the spidergram of SF-36 scores at baseline (Figure 2). The US population norms were used only as a benchmark to allow comparisons between RA patients with available general population data. Following treatment with either dose of CZP plus MTX, patients reported improvements in HRQoL, or 'multidimensional function', at first assessment (week 12), with large improvements in both the physical and mental domains of HRQoL that exceeded MCID. In particular, energy (Vitality) and emotional state (mental health) domain scores approached normative values of the general population in the US, and the significant improvement in SF-36 MCS scores observed with CZP plus MTX treatment in this trial, which approached levels of improvement in PCS scores, is novel among studies of TNF inhibitors in RA [31-35]. The negative psychological effects of RA are well documented; many patients with RA have mood and anxiety disorders [36], and it has been reported that 21% to 39% of patients with RA experience significant depressive symptoms [37,38], although treatment of these aspects of the disease is often suboptimal. The improvements in SF-36 MCS and mental health scores following CZP treatment are thus particularly relevant for patients because they may help them return to normal levels of emotional functioning.

Patients treated with CZP plus MTX also reported significant improvements in global assessment of disease activity and physical function, as well as relief of pain and fatigue, as early as week 1 of treatment. Although there was a small decrease in the percentage of patients reporting clinically meaningful reductions in fatigue from week 4 to week 52, this is likely because of protocol-mandated withdrawal at week 16 for failure to achieve ACR20 responses at weeks 12 and/or 14, as well as imputation of withdrawn subjects with the conservative approach of non-responders after week 16. Reductions in fatigue and all other PROs with CZP plus MTX remained highly significant throughout the trial, with approximately 50% of patients reporting clinically meaningful reductions by week 52. In general, the effect of CZP on the patient-reported outcomes described herein are comparable with those reported with other TNF inhibitors in clinical studies [31-35,39] as well as in studies in clinical practice [19,32,34,40-43]. However, the rapid improvements in patient-reported outcomes in CZP-treated patients, particularly those reflecting improved mental health, which have not previously been observed, are a particularly interesting characteristic of this new anti-TNF.

Patient's daily burden of disease and their poor HRQoL directly limit their everyday activities as well as productivity at work and within the home with negative consequences for society. Results from the RAPID 1 trial have demonstrated that CZP treatment improves productivity at work and at home,

including fewer number of days lost engaging in family, social and leisure activities [44]. Furthermore, a *post hoc* analysis demonstrated that these improvements in productivity were closely reflected by similar changes in pain, physical function and fatigue (unpublished observations).

The data presented in this paper demonstrate that the CZP-treated patients experience early improvements in all patient-reported outcomes over PBO. In addition, there have been data suggesting that rapid improvements in disease activity are associated with better long-term outcomes [45]. Patients have a greater chance of avoiding long-term disability, allowing them to regain their normal levels of physical, emotional and social participation and greatly improving overall HRQoL.

Previously reported results from the RAPID 1 trial have demonstrated that treatment with CZP plus MTX rapidly and significantly reduces disease activity (as assessed by DAS28 scores) and improves the clinical signs and symptoms of RA (as assessed by ACR20 response rates) [15]. The improvements in patient-reported outcomes following CZP treatment reported herein thus support and complement these previously reported clinical improvements. In addition, the analyses correlating responses as assessed by improvements in PROs with clinical (ACR and DAS) responses demonstrate that patient-reported outcomes correlate well with physician-reported, clinical indices. Not surprisingly, because the HAQ-DI and pain are components of the ACR20 response rate criteria, physical function and pain were highly correlated with ACR20 response rates. In contrast, changes in SF-36 PCS and MCS scores had the lowest correlation with ACR20 and DAS responses. These results illustrated that although clinical measures and PROs are generally well correlated, assessment of only clinical measures does not capture all aspects of RA and its impact on patients' physical and mental health. Assessment of both clinical (physician-reported) and patient-reported outcomes is thus necessary to fully elucidate treatment benefit.

## Conclusions

The patient-reported assessments implemented in the RAPID 1 clinical trial demonstrated that RA patients experience rapid and sustained improvements in HRQoL, fatigue, physical function, disease activity and arthritis pain. These improvements were statistically significant and clinically meaningful from the first post-baseline assessment through to the end of the study period at one year. These results demonstrate that the benefits of CZP extend beyond clinical efficacy endpoints into areas that are more relevant and meaningful for patients on a daily basis.

## Competing interests

VS has received consulting fees from UCB, Inc. PM, GB, RvV, BC, EK, and AK have received research grants and consulting fees from UCB, Inc. EN is a Life Sciences Business & Decision

consultant working as consultant for UCB, Inc. GC is an employee of UCB, Inc.

## Authors' contributions

PM, GB, RvV, BC, EK and AK made substantial contributions to the data acquisition, analysis, and interpretation and reviewed and revised the article content. VS, GC and EN participated in the analysis and interpretation of the data, and VS and EN drafted the manuscript. All authors read and approved the final manuscript.

## Acknowledgements

This paper was funded by UCB Pharma, which sponsored the clinical trial in which the data were collected. UCB Pharma contributed to the study design, and the collection, analysis and interpretation of the data. The authors thank Linda Wychowksi and Karen Munro from PAREXEL who provided medical writing and editorial services on behalf of UCB Pharma.

## References

- Chen YF, Jobanputra P, Barton P, Jowett S, Bryan S, Clark W, Fry-Smith A, Burls A: **A systematic review of the effectiveness of adalimumab, etanercept and infliximab for the treatment of rheumatoid arthritis in adults and an economic evaluation of their cost-effectiveness.** *Health Technol Assess* 2006, **10**:1-229. iii-xiii
- Cole JC, Motivala SJ, Khanna D, Lee JY, Paulus HE, Irwin MR: **Validation of single-factor structure and scoring protocol for the Health Assessment Questionnaire-Disability Index.** *Arthritis Rheum* 2005, **53**:536-542.
- Conaghan PG, Green MJ, Emery P: **Established rheumatoid arthritis.** *Baillieres Best Pract Res Clin Rheumatol* 1999, **13**:561-575.
- Strand V, Scott DL, Emery P, Kalden JR, Smolen JS, Cannon GW, Tugwell P, Crawford B: **Physical function and health related quality of life: analysis of 2-year data from randomized, controlled studies of leflunomide, sulfasalazine, or methotrexate in patients with active rheumatoid arthritis.** *J Rheumatol* 2005, **32**:590-601.
- Whalley D, McKenna SP, de Jong Z, van der HD: **Quality of life in rheumatoid arthritis.** *Br J Rheumatol* 1997, **36**:884-888.
- Terwee CB, Dekker FW, Wiersinga WM, Prummel MF, Bossuyt PM: **On assessing responsiveness of health-related quality of life instruments: guidelines for instrument evaluation.** *Qual Life Res* 2003, **12**:349-362.
- Felson DT, Anderson JJ, Boers M, Bombardier C, Chernoff M, Fried B, Furst D, Goldsmith C, Kieszak S, Lightfoot R: **The American College of Rheumatology preliminary core set of disease activity measures for rheumatoid arthritis clinical trials. The Committee on Outcome Measures in Rheumatoid Arthritis Clinical Trials.** *Arthritis Rheum* 1993, **36**:729-740.
- Hewlett S, Cockshott Z, Byron M, Kitchen K, Tipler S, Pope D, Hehir M: **Patients' perceptions of fatigue in rheumatoid arthritis: overwhelming, uncontrollable, ignored.** *Arthritis Rheum* 2005, **53**:697-702.
- Rupp I, Boshuizen HC, Jacobi CE, Dinant HJ, Bos GA van den: **Impact of fatigue on health-related quality of life in rheumatoid arthritis.** *Arthritis Rheum* 2004, **51**:578-585.
- Tugwell P, Wells G, Strand V, Maetzel A, Bombardier C, Crawford B, Dorrier C, Thompson A: **Clinical improvement as reflected in measures of function and health-related quality of life following treatment with leflunomide compared with methotrexate in patients with rheumatoid arthritis: sensitivity and relative efficiency to detect a treatment effect in a twelve-month, placebo-controlled trial. Leflunomide Rheumatoid Arthritis Investigators Group.** *Arthritis Rheum* 2000, **43**:506-514.
- Pincus T, Strand V, Koch G, Amara I, Crawford B, Wolfe F, Cohen S, Felson D: **An index of the three core data set patient questionnaire measures distinguishes efficacy of active treatment from that of placebo as effectively as the American College of Rheumatology 20% response criteria (ACR20) or the Disease Activity Score (DAS) in a rheumatoid arthritis clinical trial.** *Arthritis Rheum* 2003, **48**:625-630.
- Strand V, Cohen S, Crawford B, Smolen JS, Scott DL: **Patient-reported outcomes better discriminate active treatment from placebo in randomized controlled trials in rheumatoid arthritis.** *Rheumatology (Oxford)* 2004, **43**:640-647.
- Fleischmann R, Vencovsky J, van Vollenhoven R, Borenstein D, Box J, Coteur G, Goel N, Brezinschek HP, Innes A, Strand V: **Efficacy and safety of certolizumab pegol monotherapy every 4 weeks in patients with rheumatoid arthritis failing previous disease-modifying antirheumatic therapy: the FAST4WARD study.** *Ann Rheum Dis* 2009, **68**:805-811.
- Smolen JS, Landewe R, Mease P, Brzezicki J, Mason D, Luijckens K, van Vollenhoven R, Kavanaugh A, Schiff M, Burmester GR, Strand V, Vencovsky J, Heijde D van der: **Efficacy and safety of certolizumab pegol plus methotrexate in active rheumatoid arthritis: the RAPID 2 study. A randomised controlled trial.** *Ann Rheum Dis* 2009, **68**:797-804.
- Keystone E, Heijde D van der, Mason D, Landewe R, van Vollenhoven R, Combe B, Emery P, Strand V, Mease PJ, Desai C, Pavelka K: **Certolizumab pegol plus methotrexate is significantly more effective than placebo plus methotrexate in active rheumatoid arthritis: findings of a fifty-two-week, phase III, multicenter, randomized, double-blind, placebo-controlled, parallel-group study.** *Arthritis Rheum* 2008, **58**:3319-3329.
- Arnett FC, Edworthy SM, Bloch DA, McShane DJ, Fries JF, Cooper NS, Healey LA, Kaplan SR, Liang MH, Luthra HS: **The American Rheumatism Association 1987 revised criteria for the classification of rheumatoid arthritis.** *Arthritis Rheum* 1988, **31**:315-324.
- Keystone EC, Kavanaugh AF, Sharp JT, Tannenbaum H, Hua Y, Teoh LS, Fischkoff SA, Chartash EK: **Radiographic, clinical, and functional outcomes of treatment with adalimumab (a human anti-tumor necrosis factor monoclonal antibody) in patients with active rheumatoid arthritis receiving concomitant methotrexate therapy: a randomized, placebo-controlled, 52-week trial.** *Arthritis Rheum* 2004, **50**:1400-1411.
- Keystone EC, Schiff MH, Kremer JM, Kafka S, Lovy M, DeVries T, Burge DJ: **Once-weekly administration of 50 mg etanercept in patients with active rheumatoid arthritis: results of a multicenter, randomized, double-blind, placebo-controlled trial.** *Arthritis Rheum* 2004, **50**:353-363.
- Strand CV, Crawford B: **Longterm treatment benefits are best reflected by patient reported outcomes.** *J Rheumatol* 2007, **34**:2317-2319.
- Strand V, Tugwell P, Bombardier C, Maetzel A, Crawford B, Dorrier C, Thompson A, Wells G: **Function and health-related quality of life: results from a randomized controlled trial of leflunomide versus methotrexate or placebo in patients with active rheumatoid arthritis. Leflunomide Rheumatoid Arthritis Investigators Group.** *Arthritis Rheum* 1999, **42**:1870-1878.
- Tuttleman M, Pillemer SR, Tilley BC, Fowler SE, Buckley LM, Alarcon GS, Trentham DE, Neuner R, Clegg DO, Leisen JC, Heyse SP: **A cross sectional assessment of health status instruments in patients with rheumatoid arthritis participating in a clinical trial. Minocycline in Rheumatoid Arthritis Trial Group.** *J Rheumatol* 1997, **24**:1910-1915.
- Ware JE, Kosinski M, Keller SK: *SF-36 Physical and Mental Health Summary Scales: a User's Manual* Boston: New England Medical Center, The Health Institute; 1994.
- Strand V, Singh JA: **Improved health-related quality of life with effective disease-modifying antirheumatic drugs: evidence from randomized controlled trials.** *Am J Manag Care* 2008, **14**:234-254.
- Tack BB: **Self-reported fatigue in rheumatoid arthritis. A pilot study.** *Arthritis Care Res* 1990, **3**:154-157.
- Wells G, Li T, Maxwell L, MacLean R, Tugwell P: **Determining the minimal clinically important differences in activity, fatigue, and sleep quality in patients with rheumatoid arthritis.** *J Rheumatol* 2007, **34**:280-289.
- Fries JF, Spitz P, Kraines RG, Holman HR: **Measurement of patient outcome in arthritis.** *Arthritis Rheum* 1980, **23**:137-145.
- Bruce B, Fries JF: **The Stanford Health Assessment Questionnaire: dimensions and practical applications.** *Health Qual Life Outcomes* 2003, **1**:20.

28. Wells GA, Tugwell P, Kraag GR, Baker PR, Groh J, Redelmeier DA: **Minimum important difference between patients with rheumatoid arthritis: the patient's perspective.** *J Rheumatol* 1993, **20**:557-560.
29. Farrar JT, Young JP Jr, LaMoreaux L, Werth JL, Poole RM: **Clinical importance of changes in chronic pain intensity measured on an 11-point numerical pain rating scale.** *Pain* 2001, **94**:149-158.
30. Dworkin RH, Turk DC, Wyrwich KW, Beaton D, Cleeland CS, Farrar JT, Haythornthwaite JA, Jensen MP, Kerns RD, Ader DN, Brandenburg N, Burke LB, Cella D, Chandler J, Cowan P, Dimitrova R, Dionne R, Hertz S, Jadad AR, Katz NP, Kehlet H, Kramer LD, Manning DC, McCormick C, McDermott MP, McQuay HJ, Patel S, Porter L, Quessy S, Rappaport BA, *et al.*: **Interpreting the clinical importance of treatment outcomes in chronic pain clinical trials: IMMPACT recommendations.** *J Pain* 2008, **9**:105-121.
31. Kimel M, Cifaldi M, Chen N, Revicki D: **Adalimumab plus methotrexate improved SF-36 scores and reduced the effect of rheumatoid arthritis (RA) on work activity for patients with early RA.** *J Rheumatol* 2008, **35**:206-215.
32. Heiberg MS, Rodevand E, Mikkelsen K, Kaufmann C, Didriksen A, Mowinckel P, Kvien TK: **Adalimumab and methotrexate is more effective than adalimumab alone in patients with established rheumatoid arthritis: results from a 6-month longitudinal, observational, multicentre study.** *Ann Rheum Dis* 2006, **65**:1379-1383.
33. Kekow J, Moots RJ, Emery P, Durez P, Koenig A, Singh A, Pedersen R, Robertson D, Freundlich B, Sato R: **Patient-reported outcomes improve with etanercept plus methotrexate in active early rheumatoid arthritis and the improvement is strongly associated with remission: The COMET trial.** *Ann Rheum Dis* 2009 in press.
34. Mittendorf T, Dietz B, Sterz R, Kupper H, Cifaldi MA, der Schulenburg JM: **Improvement and longterm maintenance of quality of life during treatment with adalimumab in severe rheumatoid arthritis.** *J Rheumatol* 2007, **34**:2343-2350.
35. Kooij SM van der, Vries-Bouwstra JK, Goekoop-Ruiterman YP, Ewals JA, Han KH, Hazes JM, Kerstens PJ, Peeters AJ, van Zeben D, Breedveld FC, Huizinga TW, Dijkmans BA, Allaart CF: **Patient-reported outcomes in a randomized trial comparing four different treatment strategies in recent-onset rheumatoid arthritis.** *Arthritis Rheum* 2009, **61**:4-12.
36. Uguz F, Akman C, Kucuksarac S, Tufekci O: **Anti-tumor necrosis factor-alpha therapy is associated with less frequent mood and anxiety disorders in patients with rheumatoid arthritis.** *Psychiatry Clin Neurosci* 2009, **63**:50-55.
37. Dickens C, Jackson J, Tomenson B, Hay E, Creed F: **Association of depression and rheumatoid arthritis.** *Psychosomatics* 2003, **44**:209-215.
38. Murphy S, Creed F, Jayson MI: **Psychiatric disorder and illness behaviour in rheumatoid arthritis.** *Br J Rheumatol* 1988, **27**:357-363.
39. Heijde D van der, Klareskog L, Singh A, Tornero J, Melo-Gomes J, Codreanu C, Pedersen R, Freundlich B, Fatenejad S: **Patient reported outcomes in a trial of combination therapy with etanercept and methotrexate for rheumatoid arthritis: the TEMPO trial.** *Ann Rheum Dis* 2006, **65**:328-334.
40. Burmester GR, Mariette X, Montecucco C, Monteagudo-Saez I, Malaise M, Tzioufas AG, Bijlsma JW, Unnebrink K, Kary S, Kupper H: **Adalimumab alone and in combination with disease-modifying antirheumatic drugs for the treatment of rheumatoid arthritis in clinical practice: the Research in Active Rheumatoid Arthritis (ReAct) trial.** *Ann Rheum Dis* 2007, **66**:732-739.
41. Strand V, Singh JA: **Improved health-related quality of life with effective disease-modifying antirheumatic drugs: evidence from randomized controlled trials.** *Am J Manag Care* 2008, **14**:234-254.
42. Torrance GW, Tugwell P, Amorosi S, Chartash E, Sengupta N: **Improvement in health utility among patients with rheumatoid arthritis treated with adalimumab (a human anti-TNF monoclonal antibody) plus methotrexate.** *Rheumatology (Oxford)* 2004, **43**:712-718.
43. Virkki LM, Kontinen YT, Peltomaa R, Suontama K, Saario R, Immonen K, Jantti J, Tuomiranta T, Nykanen P, Hameenkorpi R, Heikkila S, Isomaki P, Nordstrom D: **Cost-effectiveness of infliximab in the treatment of rheumatoid arthritis in clinical practice.** *Clin Exp Rheumatol* 2008, **26**:1059-1066.
44. Kavanaugh A, Smolen J, Emery P, Purcaru O, Keystone E, Richard L, Strand V, van Vollenhoven RF: **Certolizumab pegol with methotrexate improves home and workplace productivity and social activities in patients with active rheumatoid arthritis.** *Arthritis Rheum* 2009, **61**:1592-1600.
45. Aletaha D, Funovits J, Keystone EC, Smolen JS: **Disease activity early in the course of treatment predicts response to therapy after one year in rheumatoid arthritis patients.** *Arthritis Rheum* 2007, **56**:3226-3235.