

RESEARCH ARTICLE

Open Access

# Tumor necrosis factor $\alpha$ release in peripheral blood mononuclear cells of cutaneous lupus and dermatomyositis patients

Adam S Nabatian<sup>1,2,3</sup>, Muhammad M Bashir<sup>1,2</sup>, Maria Wysocka<sup>2</sup>, Meena Sharma<sup>1,2</sup> and Victoria P Werth<sup>1,2\*</sup>

## Abstract

**Introduction:** Several studies have reported that TNF $\alpha$  is substantially increased within skin lesions of patients with discoid lupus erythematosus (DLE), subacute cutaneous lupus erythematosus (SCLE) and dermatomyositis (DM) compared to controls. Elevated TNF $\alpha$  has been reported in the sera of some patients with systemic lupus erythematosus, DLE and SCLE, but not in the sera of patients with DM. Because of the key pathogenic role of autoimmunity in these diseases, in this study we sought to evaluate TNF $\alpha$  production by a readily available source of immune cells (namely, peripheral blood mononuclear cells (PBMCs)) taken from controls and from patients with cutaneous lupus or DM.

**Methods:** Freshly isolated PBMCs were cultured overnight, and TNF $\alpha$  protein accumulation in conditioned medium was determined. In addition, flow cytometry using cell-type-specific markers was performed to determine the sources of TNF $\alpha$ . One-way analysis of variance and Dunnett's multiple comparisons test were performed for statistical comparisons.

**Results:** Accumulation of TNF $\alpha$  protein in conditioned medium containing PBMCs from DLE patients, but not from SCLE, TLE or DM patients, was significantly greater (19-fold) than that from controls ( $P < 0.001$ ). In DLE PBMCs, increased TNF $\alpha$  was produced by circulating monocytes and myeloid dendritic cells (mDCs). The mean TNF $\alpha$  fluorescence intensity, but not the total number, of both monocytes and mDCs ( $P < 0.01$ ) from DLE patients was significantly greater (2.3-fold) than that of controls. There were significantly more (13.3-fold) mDCs with intracellular TNF $\alpha$  in blood from DLE patients ( $P < 0.001$ ) and DM patients ( $P < 0.001$ ) compared to controls. Most importantly, a positive correlation was seen in DLE patients between their disease activity measured using the Cutaneous Lupus Erythematosus Disease Area and Severity Index and TNF $\alpha$  protein secretion ( $r = 0.61$ ,  $P < 0.08$ ).

**Conclusions:** TNF $\alpha$  protein production by PBMCs is greater in DLE patients than in patients with other cutaneous forms of lupus and DM or in controls. Flow cytometric studies demonstrated that circulating monocytes and mDCs contributed to this increased TNF $\alpha$  production. Monocytes and mDCs are present in lesional skin, and the increased TNF $\alpha$  production by these cells and other PBMCs likely increase the number of inflammatory cells seen in DLE skin relative to other subsets of cutaneous lupus erythematosus and DM. These results provide a possible biological explanation for the denser infiltrate seen in DLE relative to DM.

## Introduction

Lupus erythematosus (LE) is a chronic autoimmune inflammatory disease. Skin involvement occurs in 70% to 85% of all patients with LE [1]. Cutaneous disease is classified as LE-specific or LE-nonspecific, based on

assessments of the morphology of the cutaneous lesions and the results of histopathologic examinations [2]. LE-specific skin lesions are divided into three broad categories that include chronic cutaneous lupus erythematosus (CCLE), subacute cutaneous lupus erythematosus (SCLE) and acute cutaneous lupus erythematosus [3]. Herein we focus on two subsets of CCLE: (1) discoid lupus erythematosus (DLE) and tumid lupus erythematosus (TLE) and (2) SCLE. DLE typically presents as

\* Correspondence: werth@mail.med.upenn.edu

<sup>1</sup>Philadelphia Veterans Affairs Medical Center, 38<sup>th</sup> and Woodland Avenues, Philadelphia, PA 08901, USA

Full list of author information is available at the end of the article

scaly, erythematous, disk-shaped patches and plaques, whereas TLE manifests as single or multiple raised polycyclic erythematous plaques with a bright reddish or violaceous smooth surface that does not scar [1]. SCLE typically presents as erythematous papulosquamous, psoriasiform plaques or annular-polycyclic plaques and the lesions typically resolve without scarring [4]. Dermatomyositis (DM) is a chronic inflammatory disorder of the skin and muscles, with histologic findings similar to SCLE [5,6].

TNF $\alpha$  is a critical proinflammatory cytokine that is implicated in the pathogenesis of multiple inflammatory diseases. TNF $\alpha$  can be produced by many different cell types including monocytes, macrophages, dendritic cells, T and B lymphocytes, natural killer cells, neutrophils, mast cells, endothelial cells, fibroblasts and keratinocytes [7-9]. TNF $\alpha$  is produced as pro-TNF $\alpha$ , which is expressed on the plasma membrane, where it can be cleaved in the extracellular domain by ADAM17 (also known as "TACE," or TNF $\alpha$ -converting enzyme), which is a matrix metalloproteinase, and results in the release of TNF $\alpha$  in a soluble form [10]. ADAM17 mRNA expression was found to be increased in lesional skin from psoriasis patients [11]. Both membrane-associated and soluble TNF $\alpha$  are active [5].

Several studies have examined TNF $\alpha$  in skin lesions and serum of patients with CLE and DM. TNF $\alpha$  is increased in lesional skin of patients with DLE and SCLE compared to controls [12-15]. DM lesional skin expresses TNF $\alpha$ , but staining has been found to be more evident in DLE patients and absent in control specimens [5]. TNF $\alpha$  was increased in muscle biopsies of DM patients [16]. TNF $\alpha$  has been reported to be elevated in sera of some patients with systemic lupus erythematosus (SLE), DLE and SCLE, but not in that of patients with DM [17-20]. *In vitro* production of TNF $\alpha$  by unstimulated PBMCs from juvenile DM patients was measured in a previous study in which the investigators found that PBMCs from children who had a disease course  $\geq$  36 months produced more TNF $\alpha$  compared to PBMCs from juvenile DM patients who had had the disease < 36 months [21]. As there are data regarding TNF $\alpha$  expression in the skin and sera of CLE and DM patients, but, to the best of our knowledge, minimal data regarding TNF $\alpha$  production from the PBMCs of these patients, the aim of our study was to evaluate the production of TNF $\alpha$  by PBMCs from DLE, SCLE, TLE and DM patients.

## Materials and methods

### Subjects

Twenty-one DLE, ten SCLE, ten TLE and eighteen DM patients were recruited from the outpatient autoimmunity clinic in the Department of Dermatology at the

Hospital of the University of Pennsylvania. All subjects who had the diagnosis of DLE, SCLE, TLE and/or DM were invited to participate in the study. Seven of the DLE patients and one of the SCLE patients had SLE as well. All of the recruited patients were receiving therapy to treat their disease (see Table 1). Eighteen people without LE, DM or any autoimmune disease were recruited as controls. To be eligible for the study, controls must not have been on corticosteroids or immunosuppressive drugs.

Demographic information and data regarding current medications and comorbid illnesses were collected from all subjects. The treating dermatologist evaluated each LE and DM patient by performing a complete physical examination and assessing the patient based on Cutaneous Lupus Erythematosus Disease Area and Severity Index (CLASI) and Systemic Lupus Erythematosus Disease Activity Index (SLEDAI) scores for LE patients and the Cutaneous Dermatomyositis Area and Severity Index (CDASI) scores for DM patients to measure disease activity and damage [22,23]. This study was approved by the Institutional Review Board (IRB) at our institution, and all PBMCs were obtained according to the IRB protocol. The Declaration of Helsinki protocols were followed, and patients gave their written, informed consent.

### Cell culture and TNF $\alpha$ determination by ELISA

PBMCs were separated from heparinized venous blood of patients with DLE, SCLE, TLE and DM, as well as from controls, on an endotoxin-free Ficoll-Paque PLUS™ gradient (GE Healthcare Bio-Sciences AB, Uppsala, Sweden). PBMCs were cultured overnight in RPMI 1640 medium supplemented with 10% fetal bovine serum, 1% L-glutamine and 1% penicillin-streptomycin at 37°C and 5% CO<sub>2</sub>. The following morning PBMCs ( $1 \times 10^5$  cells in 0.2 ml per well) were plated in 96-well plates (Falcon, Franklin Lakes, NJ, USA) and cultured for 24 hours at 37°C and 5% CO<sub>2</sub>. Conditioned media were then collected and stored at -80°C. TNF $\alpha$  was quantitated by ELISA according to the manufacturer's protocol (BD Biosciences, San Diego, CA, USA). All determinations were performed in triplicate. The viability of cells was measured by trypan blue staining.

### Flow cytometric analysis

Prior to intracellular staining for TNF $\alpha$ , PBMCs were cultured in medium for 4 hours in the presence of brefeldin A (1  $\mu$ g/ml; Invitrogen/Life Technologies, Carlsbad, CA, USA). To detect intracellular expression of TNF $\alpha$  in dendritic cells, approximately  $10^6$  PBMCs per sample were stained with lineage 1 cocktail-fluorescein isothiocyanate (FITC) (lineage cocktail containing antibodies against CD3, CD14, CD16, CD19, CD20 and

**Table 1 Patient demographics and clinical characteristics<sup>a</sup>**

Disease	Sex (n)	Race (n)	Mean age, years (range)	Mean CLASI or CDASI score	Medications (patients, n)
DLE (n = 21)	Females, 16 Males, 5	AA, 12 White, 8 Hispanic, 1	45.0 (23 to 64)	8	Antimalarials, 18 Methotrexate, 2 Immunosuppressants, 5 Corticosteroids, 3 Dapsone, 1 Thalidomide, 1
SCLE (n = 10)	Females, 7 Males, 3	White, 9 Asian, 1	47.1 (20 to 64)	9.5	Antimalarials, 7 Immunosuppressants, 2 Corticosteroids, 2 Thalidomide, 4
TLE (n = 10)	Females, 8 Males, 2	AA, 1 White, 9	42.9 (25 to 57)	10.1	Antimalarials, 10 Methotrexate, 1
DM (n = 18)	Females, 15 Males, 3	AA, 1 White, 16 Asian, 1	49 (21 to 75)	14.7	Antimalarials, 10 Methotrexate, 6 Immunosuppressants, 6 Corticosteroids, 9
controls (n = 18)	Females, 10 Males, 8	AA, 4 White, 12 Asian, 2	31.2 (26 to 57)	N/A	N/A

<sup>a</sup>AA = African American; CDASI = Cutaneous Dermatomyositis Area and Severity Index; CLASI = Cutaneous Lupus Erythematosus Disease Area and Severity Index; DLE = discoid lupus erythematosus; DM = dermatomyositis; N/A = not applicable; SCLE = subacute cutaneous lupus erythematosus; TLE = tumid lupus erythematosus.

CD56), anti-human leukocyte antigen (HLA)-DR-perdin-chlorophyll-protein (PerCp) and anti-CD123-phycoerythrin (PE) (plasmacytoid dendritic cells (pDCs)) or anti-CD11c-PE (myeloid dendritic cells (mDCs)) for 30 minutes on ice, followed by 15-minute incubation with fixation reagent A (FIX & PERM; Invitrogen/Life Technologies). Cells were then washed, permeabilized with reagent B (FIX & PERM; Invitrogen Life/Technologies) and stained with anti-TNF $\alpha$ -allophycocyanin (anti-TNF $\alpha$ -APC) antibody (or an appropriate isotype control) for 15 minutes at room temperature.

To detect intracellular expression of TNF $\alpha$  in monocytes, PBMCs were stained with anti-CD64-FITC and anti-CD14-PE followed by anti-TNF $\alpha$ -APC or an appropriate isotype control as described above. To detect intracellular expression of TNF $\alpha$  in T cells, PBMCs were stained with anti-CD3-FITC followed by anti-TNF $\alpha$ -APC or an appropriate isotype control as described above. All antibodies used were purchased from BD Biosciences.

Cells were analyzed using a FACSCalibur flow cytometer (BD Biosciences, San Jose, CA, USA) with BD CellQuest software (BD Biosciences) at the Flow Cytometry and Cell Sorting Core, Abramson Cancer Center, University of Pennsylvania, Philadelphia, PA, USA. We acquired 150,000 events of live cells.

#### Statistical analysis

One-way analysis of variance followed by Dunnett's multiple comparisons test was used for statistical evaluation as appropriate. *P* values less than 0.05 in the *post*

*hoc* test were considered significant. Correlations were calculated by performing a Pearson correlation test.

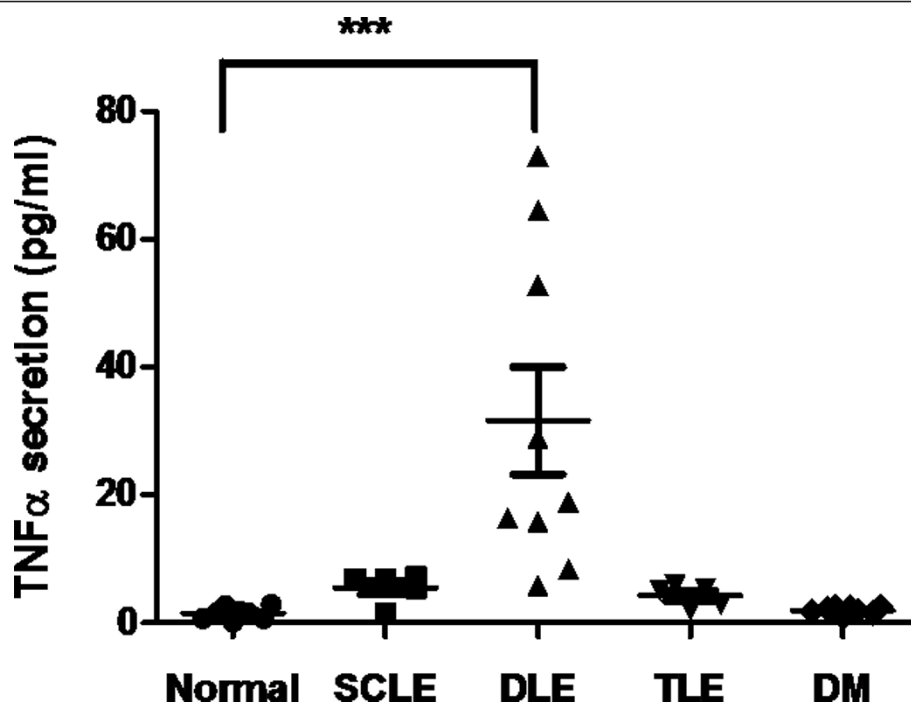
## Results

### Study population

The demographic and clinical characteristics of the study population are summarized in Table 1. Seven of the DLE patients and one of the SCLE patients had SLE, which did not affect the study results, because removal of these patients from their respective groups had no effect on mean values or statistical significance. All of the recruited patients were receiving therapy to treat their disease; however, there was no correlation between the therapy that the patients were receiving and the results obtained.

### TNF $\alpha$ release from unstimulated DLE PBMCs was significantly elevated and correlated with disease activity

Initially, we compared the amount of TNF $\alpha$  released from PBMCs of nine DLE, five SCLE, five TLE and eight DM patients, as well as eight controls, by ELISA. Compared to controls, DLE PBMCs produced significantly greater amounts of TNF $\alpha$  (*P* < 0.001) (Figure 1). However, SCLE, TLE and DM PBMCs did not produce significantly greater amounts of TNF $\alpha$  compared to controls. The variation of the triplicate of TNF $\alpha$  levels for each patient was < 10%. The production of TNF $\alpha$  was not induced by lipopolysaccharide (LPS) contamination, because the maximal level of LPS detected by Limulus amoebocyte assay (Associates of Cape Cod, East Falmouth, MA, USA) was < 0.015 EU/ml (< 1.5 pg/



**Figure 1** TNF $\alpha$  protein production by unstimulated peripheral blood mononuclear cells from DLE, SCLE, tumid TLE and DM patients and from controls. TLE should be written in the figure Peripheral blood mononuclear cells (PBMCs) were cultured for 24 hours, followed by collection of supernatants. The concentration of TNF $\alpha$  in the supernatants was measured by ELISA. Bars show the means and SD. \*\*\* $P < 0.001$  vs control PBMCs by Dunnett's multiple comparison test. DLE = discoid lupus erythematosus, DM = dermatomyositis, TLE, tumid lupus erythematosus, SCLE, subacute cutaneous lupus erythematosus.

ml), a concentration which gives a negative test result. We also determined the correlation of TNF $\alpha$  release with disease activity in these nine DLE patients using the CLASI score to measure disease activity. A positive correlation ( $r = 0.61$ ,  $P = 0.08$ ) was seen in DLE patients between their disease activity and TNF $\alpha$  protein secretion (Figure 2). There was no correlation seen in SCLE ( $r = -0.05$ ) or DM ( $r = 0.3493$ ) patients between their disease activity and TNF $\alpha$  protein secretion.

#### Myeloid dendritic cells expressing intracellular TNF $\alpha$ were significantly greater in DLE and DM patients than in controls

The dot plots shown in Figure 3 demonstrate populations of both mDCs (Figure 3A) and monocytes (Figure 3B) from representative individuals, one from each group, who were defined and/or gated by antibodies (upper panel) and subsequently analyzed for their ability to produce TNF $\alpha$  (lower panel).

We determined the percentage of CD64<sup>+</sup>CD14<sup>+</sup> monocytes, CD123<sup>+</sup> pDCs, CD11c<sup>+</sup>HLA-DR<sup>hi/low</sup> mDCs and CD3<sup>+</sup> T lymphocytes expressing intracellular TNF $\alpha$  in five DLE, five DM patients and five controls. The results from all patients demonstrated that major producers of TNF $\alpha$  were monocytes and mDCs (Figure 4).

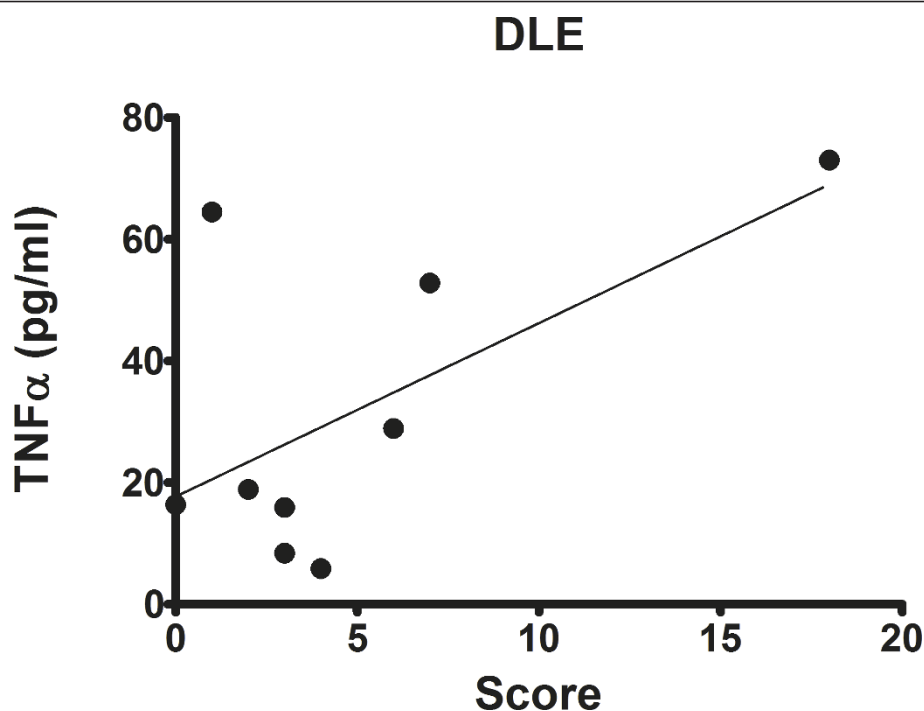
We observed a trend toward greater amounts of intracellular TNF $\alpha$  in monocytes from both DLE and DM patients compared to controls ( $P > 0.05$ ) (Figure 4A). There was a statistically significant difference in TNF $\alpha$  intracellular staining of mDCs when both DLE ( $P < 0.001$ ) and DM ( $P < 0.001$ ) patients were compared to controls (Figure 4B).

#### Mean fluorescence intensity of TNF $\alpha$ release by mDCs and monocytes

The mean fluorescence intensity (MFI) of TNF $\alpha$  release from CD64<sup>+</sup>CD14<sup>+</sup> monocytes and CD11c<sup>+</sup>HLA-DR<sup>hi/low</sup> mDCs was measured among five DLE and five DM patients, as well as five controls. There was a 3.3-fold increase in the MFI of monocytes ( $P < 0.01$ ) and a 3.6-fold increase in the MFI of mDCs ( $P < 0.01$ ) from DLE patients compared to controls (Figure 5). There was no significant difference between the MFIs of both monocytes and mDCs from DM patients compared to controls.

#### CD64<sup>+</sup>CD14<sup>+</sup> monocytes and CD11c<sup>+</sup>HLA-DR<sup>hi/low</sup> myeloid dendritic cells were not significantly greater in DLE patients

The size of the monocyte and mDC populations was measured in five DLE and five DM patients, as well as



**Figure 2** TNFα in peripheral blood mononuclear cell supernatants from discoid lupus erythematosus (DLE) patients correlated with Cutaneous Lupus Erythematosus Disease Area and Severity Index scores ( $r = 0.61$ ).

in five controls. The size of the CD64<sup>+</sup>CD14<sup>+</sup> monocyte population in DLE patients was 1.7-fold greater compared to DM patients ( $P > 0.05$ ) and 2.2-fold greater compared to controls ( $P > 0.05$ ) (Figure 6A). The size of the CD11c<sup>+</sup>HLA-DR<sup>hi/low</sup> mDC population of DLE patients was 1.4-fold greater compared to that of DM patients ( $P > 0.05$ ) and 3.1-fold greater than that of controls ( $P > 0.05$ ) (Figure 6B).

## Discussion

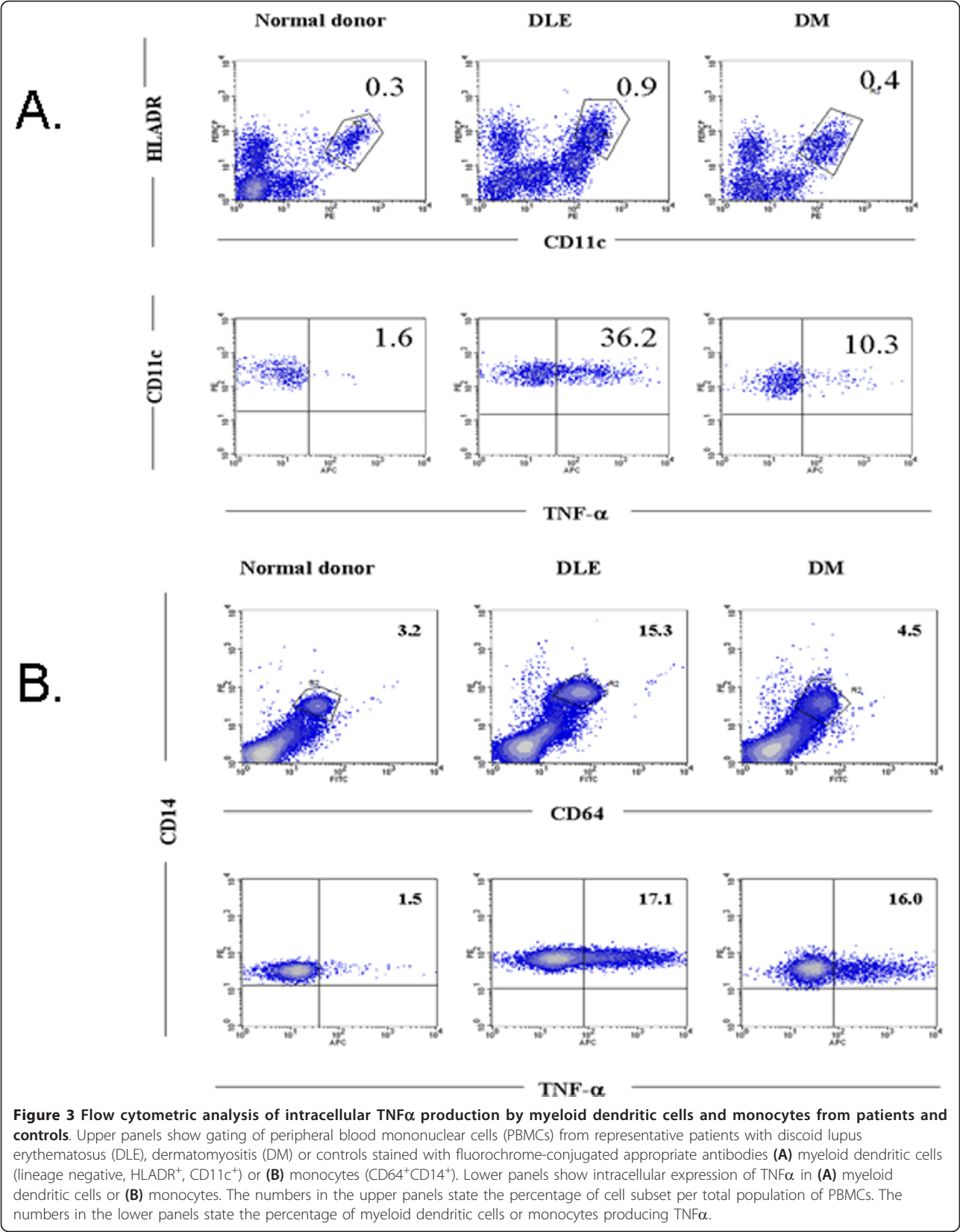
The proinflammatory nature of TNFα in inflammatory diseases is well-established (reviewed in [7]). TNFα causes the upregulation of adhesion molecules and chemokines, which leads to attachment of inflammatory cells to vessels, rolling, emigration and eventually chemotaxis [24-26]. TNFα is an activating cytokine for fibroblasts and leukocytes, including dendritic cells. TNFα stimulation leads to increased production of IFN-γ, a cytokine that is also increased in lesional skin of DLE patients [12]. Our study demonstrates that TNFα release is significantly greater in PBMCs from DLE patients compared to controls.

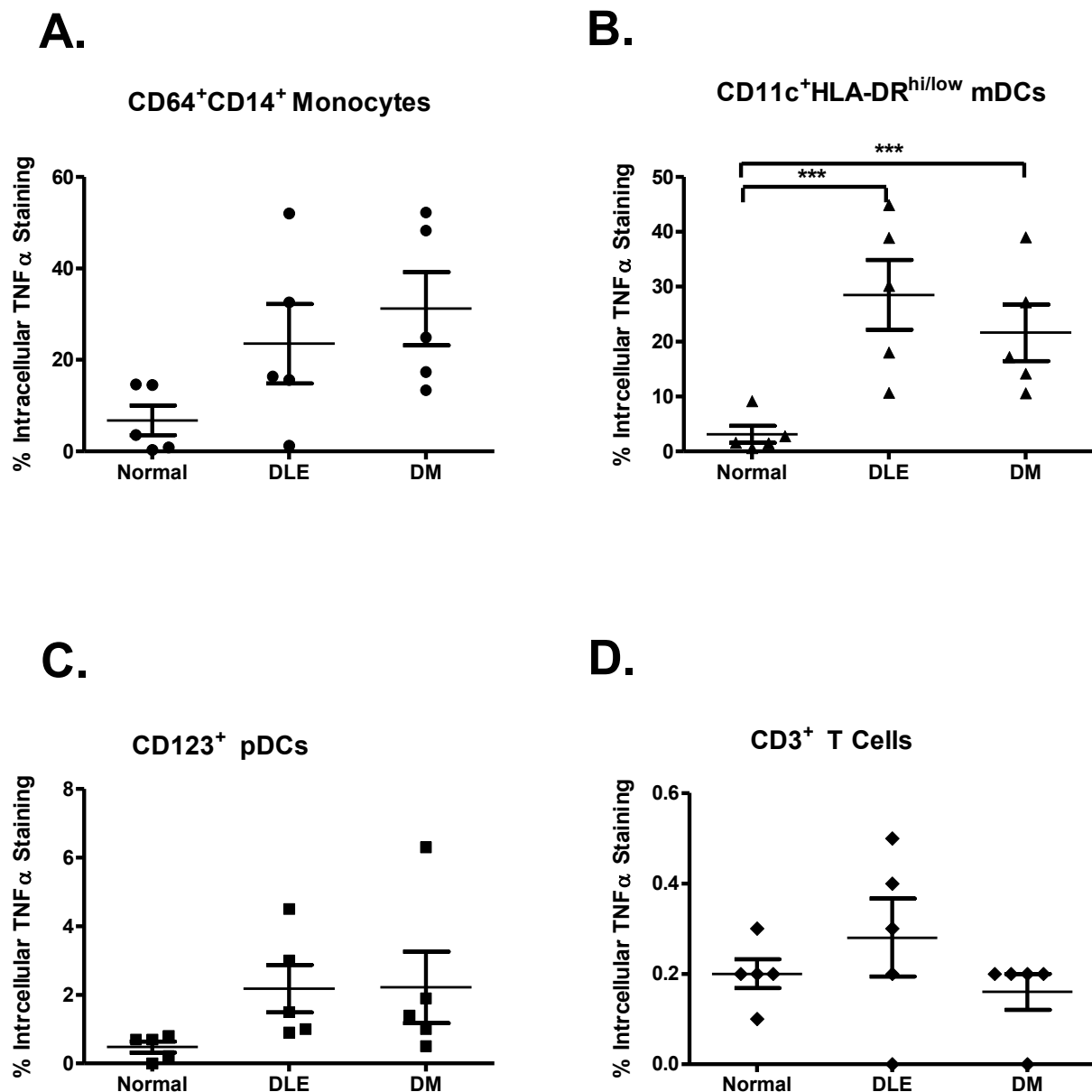
We next determined which specific cell type was secreting the increased TNFα in DLE patients. Our flow cytometry results demonstrated that the majority of TNFα was produced by monocytes and mDCs, with a statistically significant difference between TNFα

intracellular staining from mDCs of DLE patients ( $P < 0.001$ ) and DM patients ( $P < 0.001$ ) compared to controls. A significantly greater MFI from monocytes and mDCs from DLE patients compared to controls was also present, whereas there was no statistically significant difference in MFI from monocytes and mDCs between DM patients and controls. The significant elevation of the MFI in DLE patients compared to controls demonstrates that the monocytes and mDCs from DLE patients are synthesizing TNFα in greater quantities compared to controls. The MFI of the PBMCs from DLE patients is significantly greater than that of controls. Our ELISA results demonstrate an approximately 15-fold increase in TNFα release from DLE PBMCs compared to those seen in DM, and the flow cytometry results explain this finding in part. We realize the monocytes and mDCs comprise a relatively small percentage of circulating cells and that there may be another population of cells that we did not stain that could contribute to the increased TNFα release in DLE. We will investigate other cell types in the future.

We next explored whether there were any differences between the size of the monocyte and mDC populations among the DLE and DM patients and controls. We found a trend toward an increased population of monocytes in DLE patients compared to both DM patients and controls. The mDC population was trending toward greater





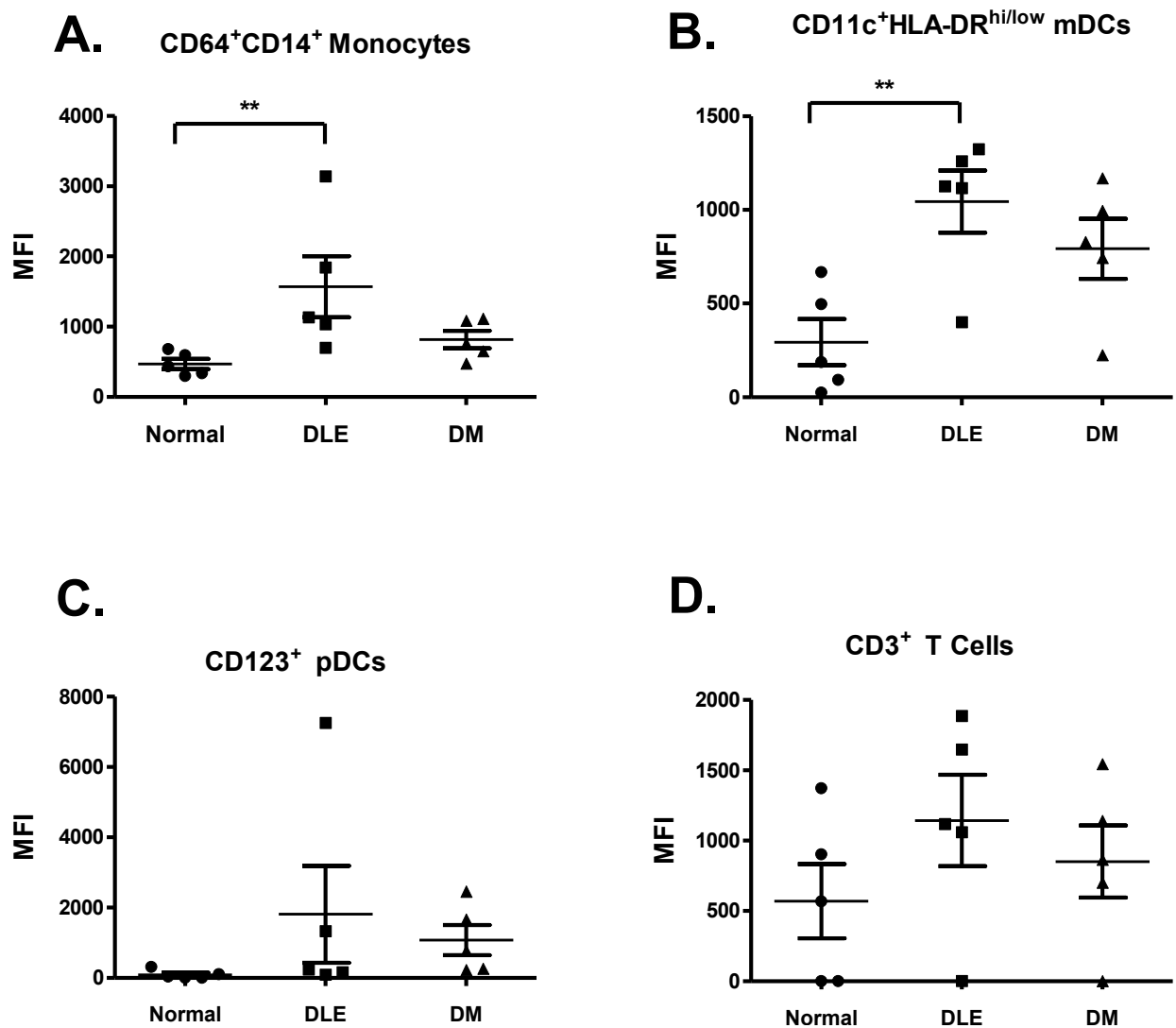


**Figure 4** Defining the cell population responsible for TNFα production. (A) CD64<sup>+</sup>CD14<sup>+</sup> monocytes, (B) CD11c<sup>+</sup>HLA-DR<sup>hi/low</sup> myeloid dendritic cells, (C) CD123<sup>+</sup> plasmacytoid dendritic cells and (D) CD3<sup>+</sup> T lymphocytes from five discoid lupus erythematosus (DLE) and five dermatomyositis (DM) patients, as well as from five controls, were analyzed by flow cytometry to assess their ability to produce intracellular TNFα. Bars show the means and SD. \*\*\**P* < 0.001 vs controls by Dunnett's multiple comparisons test.

numbers in DLE patients compared to controls. These flow cytometry results support our cultured PBMC ELISA results, which showed that there was a significantly greater amount of TNFα released from DLE patients. The increased amount of TNFα in monocytes and mDCs from DLE patients and the greater size of these cell populations in DLE patients may further explain why PBMCs from DLE patients release greater quantities of TNFα.

Plasmacytoid DCs have been implicated in the pathogenesis of both SLE and CLE. SLE is characterized by

elevated levels of IFNα and IFNβ (both type I IFNs) [27,28]. Because pDCs are the main cell type producing IFNα and IFNβ, they have been implicated in disease pathogenesis. A higher proportion of pDCs are also present in the skin than in the blood of patients with SLE and CLE, suggesting that pDCs migrate from the circulation to the skin and may play a role in the production of skin lesions [29,30]. Our experiments demonstrate that TNFα levels produced by PBMCs vary with the different CLE subsets and with DM. We found that pDCs



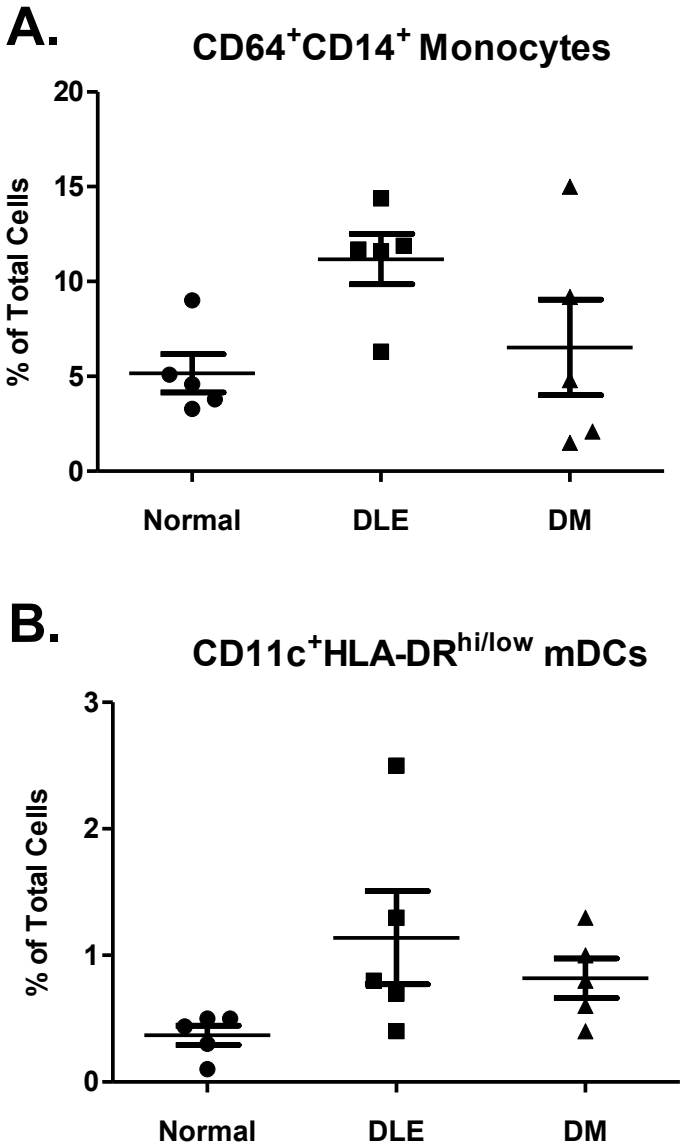
**Figure 5 Measurement of mean fluorescence intensity (MFI).** The MFI of TNFα release from (A) CD64<sup>+</sup>CD14<sup>+</sup> monocytes, (B) CD11c<sup>+</sup>HLA-DR<sup>hi/low</sup> myeloid dendritic cells, (C) CD123<sup>+</sup> plasmacytoid dendritic cells, and (D) CD3<sup>+</sup> T lymphocytes from five discoid lupus erythematosus (DLE) and five dermatomyositis (DM) patients, as well as from five controls, as determined by flow cytometry. Bars show the means and SD. \*\**P* < 0.01 vs controls by Dunnett's multiple comparison test.

produced minimal amounts of TNFα compared to monocytes and mDCs. Therefore, we postulate that monocytes and mDCs may have a bigger role in the pathogenesis of DLE than was originally believed. The increased numbers of inflammatory cells seen in the skin of DLE patients relative to DM patients and controls may be explained, at least in part, by the increased TNFα produced in DLE, given the importance of TNFα in cell recruitment to endothelial cells and skin [25].

Flow cytometry showed that both CD11c<sup>+</sup>HLA-DR<sup>hi</sup> and CD11c<sup>+</sup>HLA-DR<sup>low</sup> mDCs produced TNFα and accounted for much of the TNFα production exhibited by PBMCs. Recently, an inflammatory mDC known as Tip-DC (TNFα-inducible nitric oxide synthase-

producing dendritic cells) has been found in elevated amounts in psoriasis plaques compared with nonlesional skin from psoriasis patients and normal skin [9,31]. These Tip-DCs are CD11c<sup>+</sup>, BDCA-1<sup>-</sup> and HLA-DR<sup>+</sup> [31]. Tip-DCs express HLA-DR at 10-fold lower levels compared to CD11c<sup>+</sup> and BDCA-1<sup>+</sup> mDCs. It is possible that some of the CD11c<sup>+</sup>HLA-DR<sup>low</sup> mDCs in our DLE patients might actually have been Tip-DCs. It has been shown that bone marrow-derived monocytes accumulate and differentiate to Tip-DCs in the spleen, liver and lymph nodes of *Trypanosoma brucei brucei*-infected mice [32]. Another type of inflammatory mDCs, known as M-DC8<sup>+</sup> cells, has also recently been described that are CD11c<sup>+</sup>, CD14<sup>+</sup>, CD16<sup>+</sup>, CD64<sup>-</sup> and HLA-DR<sup>+</sup>





**Figure 6** Measurement of cell populations by flow cytometry. (A) CD64<sup>+</sup>CD14<sup>+</sup> monocyte and (B) CD11c<sup>+</sup>HLA-DR<sup>hi/low</sup> myeloid dendritic cell populations from five discoid lupus erythematosus (DLE) and five dermatomyositis (DM) patients, as well as from five controls, as determined by flow cytometry.

[33,34]. These M-DC8<sup>+</sup> cells are able to produce significantly greater amounts of TNF $\alpha$  in response to LPS compared to M-DC8<sup>-</sup> monocytes and DCs [8,35]. Although we have not directly addressed these two populations of mDCs in our current studies, there is a possibility that these populations might contribute to enhanced TNF $\alpha$  production in DLE patients. Further studies designed to determine a potential role of these predominantly tissue-based DCs are being performed.

**Conclusions**

Our findings suggest that DLE is associated with increased TNF $\alpha$  protein production from CD64<sup>+</sup>CD14<sup>+</sup>

monocytes and CD11c<sup>+</sup>HLA-DR<sup>hi/low</sup> mDCs. The MFIs of the monocyte and mDC populations are also increased in DLE, suggesting that these cells likely have a greater role in DLE than originally believed. Future studies using surface staining for Tip-DCs and M-DC8<sup>+</sup> mDCs by flow cytometry will allow us to explore the role of these cell populations in DLE.

**Abbreviations**

CCL: chronic cutaneous lupus erythematosus; CDASI: Cutaneous Dermatomyositis Area and Severity Index; CLASI: Cutaneous Lupus Erythematosus Disease Area and Severity Index; CLE: cutaneous lupus erythematosus; DLE: discoid lupus erythematosus; DM: dermatomyositis; ELISA: enzyme-linked immunosorbent assay; IFN: interferon; mDC: myeloid

dendritic cell; PBMC: peripheral blood mononuclear cell; RT-PCR: real-time polymerase chain reaction; SCL: subacute cutaneous lupus erythematosus; SLE: systemic lupus erythematosus; SLEDAI: Systemic Lupus Erythematosus Disease Activity Index; TLE: tumid lupus erythematosus; TNF $\alpha$ : tumor necrosis factor  $\alpha$ .

## Acknowledgements

This study was supported in part by a merit review grant from the Department of Veterans Affairs, Veterans Health Administration, Office of Research and Development, Biomedical Laboratory Research and Development, and by National Institutes of Health (NIH) grant K24-AR 02207 (to VPW). In addition, funding was provided by the Department of Veterans Affairs, Veterans Health Administration, Office of Research and Development, Biomedical Laboratory Research and Development.

## Author details

<sup>1</sup>Philadelphia Veterans Affairs Medical Center, 38<sup>th</sup> and Woodland Avenues, Philadelphia, PA 08901, USA. <sup>2</sup>Department of Dermatology, School of Medicine, University of Pennsylvania, 2 Maloney Building, 36th and Spruce Streets, Philadelphia, PA 19104, USA. <sup>3</sup>University of Medicine and Dentistry of New Jersey-Robert Wood Johnson Medical School, 675 Hoes Lane West Piscataway, New Brunswick, NJ 08854 USA.

## Authors' contributions

ASN and MMB carried out the PBMC cultures and TNF ELISA studies. AB and MW participated in the flow studies, and AB drafted the manuscript. VPW performed the CLASI assessments. VPW and ASN participated in the design of the study. MS performed the statistical analysis. VPW conceived the study, participated in its design and coordination and helped to draft the manuscript. All authors read and approved the final manuscript.

## Competing interests

The authors declare that they have no competing interests.

Received: 22 November 2010 Revised: 21 September 2011

Accepted: 4 January 2012 Published: 4 January 2012

## References

- Fabbri P, Cardinali C, Giomi B, Caproni M: Cutaneous lupus erythematosus: diagnosis and management. *Am J Clin Dermatol* 2003, **4**:449-465.
- Gilliam JN, Sontheimer RD: Distinctive cutaneous subsets in the spectrum of lupus erythematosus. *J Am Acad Dermatol* 1981, **4**:471-475.
- Sontheimer RD: The lexicon of cutaneous lupus erythematosus: a review and personal perspective on the nomenclature and classification of the cutaneous manifestations of lupus erythematosus. *Lupus* 1997, **6**:84-95.
- Lin JH, Dutz JP, Sontheimer RD, Werth VP: Pathophysiology of cutaneous lupus erythematosus. *Clin Rev Allergy Immunol* 2007, **33**:85-106.
- Caproni M, Torchia D, Cardinali C, Volpi W, Del Bianco E, D'Agata A, Fabbri P: Infiltrating cells, related cytokines and chemokine receptors in lesional skin of patients with dermatomyositis. *Br J Dermatol* 2004, **151**:784-791, [see comment].
- Smith ES, Hallman JR, DeLuca AM, Goldenberg G, Jorizzo JL, Sanguenza OP: Dermatomyositis: a clinicopathological study of 40 patients. *Am J Dermatopathol* 2009, **31**:61-67.
- Bradley JR: TNF-mediated inflammatory disease. *J Pathol* 2008, **214**:149-160.
- Schäkel K, Kannagi R, Knip B, Goto Y, Mitsuoka C, Zwirner J, Soruri A, von Kietzell M, Rieber E: 6-Sulfo LacNAc, a novel carbohydrate modification of PSGL-1, defines an inflammatory type of human dendritic cells. *Immunity* 2002, **17**:289-301.
- Lowes MA, Chamian F, Abello MV, Fuentes-Duculan J, Lin SL, Nussbaum R, Novitskaya I, Carbonaro H, Cardinale I, Kikuchi T, Gilleaudeau P, Sullivan-Whalen M, Wittkowski KM, Papp K, Garovoy M, Dummer W, Steinman RM, Krueger JG: Increase in TNF- $\alpha$  and inducible nitric oxide synthase-expressing dendritic cells in psoriasis and reduction with efalizumab (anti-CD11a). *Proc Natl Acad Sci USA* 2005, **102**:19057-19062.
- Black RA, Rauch CT, Kozlosky CJ, Peschon JJ, Slack JL, Wolfson MF, Castner BJ, Stocking KL, Reddy P, Srinivasan S, Nelson N, Boiani N, Schooley KA, Gerhart M, Davis R, Fitzner JN, Johnson RS, Paxton RJ, March CJ, Cerretti DP: A metalloproteinase disintegrin that releases tumour-necrosis factor- $\alpha$  from cells. *Nature* 1997, **385**:729-733.
- Kawaguchi M, Mitsuhashi Y, Kondo S: Overexpression of tumour necrosis factor- $\alpha$ -converting enzyme in psoriasis. *Br J Dermatol* 2005, **152**:915-919.
- Toro JR, Finlay D, Dou X, Zheng SC, LeBoit PE, Connolly MK: Detection of type 1 cytokines in discoid lupus erythematosus. *Arch Dermatol* 2000, **136**:1497-1501.
- Popovic K, Ek M, Espinosa A, Padyukov L, Harris HE, Wahren-Herlenius M, Nyberg F: Increased expression of the novel proinflammatory cytokine high mobility group box chromosomal protein 1 in skin lesions of patients with lupus erythematosus. *Arthr Rheum* 2005, **52**:3639-3645.
- Drosera M, Facchetti F, Landolfo S, Mondini M, Nyberg F, Parodi A, Santoro A, Zampieri S, Doria A: Role of soluble and cell surface molecules in the pathogenesis of autoimmune skin diseases. *Clin Exp Rheumatol* 2006, **24**(1 Suppl 40):S7-S13.
- Zampieri S, Alaibac M, Laccarino L, Rondinone R, Ghirardello A, Sarzi-Putti P, Doria A, Peserico A: TNF  $\alpha$  is expressed in refractory skin lesions from patients with subacute cutaneous lupus erythematosus. *Ann Rheum Dis* 2006, **65**:545-548.
- De Bleeker JL, Meire VI, Declercq W, Van Aken EH: Immunolocalization of tumor necrosis factor- $\alpha$  and its receptors in inflammatory myopathies. *Neuromuscul Disord* 1999, **9**:239-246.
- Alecu M, Coman G, Alecu S: Serological levels of apoptotic bodies, sFAS and TNF in lupus erythematosus. *Rom J Intern Med* 2001, **38**:39-83-88.
- Sabry A, Sheashaa H, El-Husseini A, Mahmoud K, Eldahshan KF, George SK, Abdel-Khalek E, El-Shafey EM, Abo-Zenah H: Proinflammatory cytokines (TNF- $\alpha$  and IL-6) in Egyptian patients with SLE: its correlation with disease activity. *Cytokine* 2006, **35**:148-153.
- Maczynska I, Millo B, Ratajczak-Stefańska V, Maleszka R, Szych Z, Kurpisz M, Giedrys-Kalemba S: Proinflammatory cytokine (IL-1 $\beta$ , IL-6, IL-12, IL-18 and TNF- $\alpha$ ) levels in sera of patients with subacute cutaneous lupus erythematosus (SCL). *Immunol Lett* 2006, **102**:79-82.
- Shimizu T, Tomita Y, Son K, Nishinara S, Sawada S, Horie T: Elevation of serum soluble tumour necrosis factor receptors in patients with polymyositis and dermatomyositis. *Clin Rheum* 2000, **19**:352-359.
- Pachman LM, Liotta-Davis MR, Hong DK, Kinsella TR, Mendez EP, Kinder JM, Chen EH: TNF $\alpha$ -308A allele in juvenile dermatomyositis: association with increased production of tumor necrosis factor  $\alpha$ , disease duration, and pathologic calcifications. *Arthritis Rheum* 2000, **43**:2368-2377.
- Krathen M, Albrecht J, Werth VP: The cutaneous lupus disease activity and severity index as a validated outcome measure for cutaneous lupus erythematosus: comment on the article by Stamm et al. *Arthritis Rheum* 2008, **59**:601-602, Comment on Arthritis Rheum 2007, **57**:1287-1295.
- Yassae M, Fiorentino D, Okawa J, Taylor L, Coley C, Troxel AB, Werth VP: Modification of the Cutaneous Dermatomyositis Disease Area and Severity Index, an outcome instrument. *Br J Dermatol* 2010, **162**:669-673.
- Pober JS, Bevilacqua MP, Mendrick DL, Lapierre LA, Fiers W, Gimbrone MA Jr: Two distinct monokines, interleukin 1 and tumor necrosis factor, each independently induce biosynthesis and transient expression of the same antigen on the surface of cultured human vascular endothelial cells. *J Immunol* 1986, **136**:1680-1687.
- Munro JM, Pober JS, Cotran RS: Tumor necrosis factor and interferon- $\gamma$  induce distinct patterns of endothelial activation and associated leukocyte accumulation in skin of *Papio anubis*. *Am J Pathol* 1989, **135**:121-133.
- Swerlick RA, Lee KH, Li KJ, Sepp NT, Caughman SW, Lawley TJ: Regulation of vascular cell adhesion molecule 1 on human dermal microvascular endothelial cells. *J Immunol* 1992, **149**:698-705.
- Blanco P, Palucka AK, Gill M, Pascual V, Banchereau J: Induction of dendritic cell differentiation by IFN- $\alpha$  in systemic lupus erythematosus. *Science* 2001, **294**:1540-1543.
- Kim T, Kanayama Y, Negoro N, Okamura M, Takeda T, Inoue T: Serum levels of interferons in patients with systemic lupus erythematosus. *Clin Exp Immunol* 1987, **70**:562-569.
- Johnson-Huang LM, McNutt NS, Krueger JG, Lowes MA: Cytokine-producing dendritic cells in the pathogenesis of inflammatory skin diseases. *J Clin Immunol* 2009, **29**:247-256.
- Farkas L, Beiske K, Lund-Johansen F, Brandtzaeg P, Jahnsen FL: Plasmacytoid dendritic cells (natural interferon- $\alpha$ / $\beta$ -producing cells) accumulate in cutaneous lupus erythematosus lesions. *Am J Pathol* 2001, **159**:237-243.
- Zaba LC, Fuentes-Duculan J, Eungdamrong NJ, Abello MV, Novitskaya I, Pierson KC, Gonzalez J, Krueger JG, Lowes MA: Psoriasis is characterized by

- accumulation of immunostimulatory and Th1/Th17 cell-polarizing myeloid dendritic cells. *J Invest Dermatol* 2009, **129**:79-88.
32. Guillems M, Movahedi K, Bosschaerts T, VandenDriessche T, Chuah MK, Hérin M, Acosta-Sanchez A, Ma L, Moser M, Van Ginderachter JA, Van Ginderachter JA, Brys L, De Baetselier P, Beschin A: **IL-10 dampens TNF/inducible nitric oxide synthase-producing dendritic cell-mediated pathogenicity during parasitic infection.** *J Immunol* 2009, **182**:1107-1118.
  33. Schäkel K, Poppe C, Mayer E, Federle C, Riethmüller G, Rieber EP: **M-DC8+ leukocytes: a novel human dendritic cell population.** *Pathobiology* 1999, **67**:287-290.
  34. de Baey A, Mende I, Riethmueller G, Baeuerle PA: **Phenotype and function of human dendritic cells derived from M-DC8<sup>+</sup> monocytes.** *Eur J Immunol* 2001, **31**:1646-1655.
  35. de Baey A, Mende I, Baretton G, Greiner A, Hartl WH, Baeuerle PA, Diepolder HM: **A subset of human dendritic cells in the T cell area of mucosa-associated lymphoid tissue with a high potential to produce TNF- $\alpha$ .** *J Immunol* 2003, **170**:5089-5094.

doi:10.1186/ar3549

**Cite this article as:** Nabatian *et al.*: Tumor necrosis factor  $\alpha$  release in peripheral blood mononuclear cells of cutaneous lupus and dermatomyositis patients. *Arthritis Research & Therapy* 2012 **14**:R1.

**Submit your next manuscript to BioMed Central and take full advantage of:**

- Convenient online submission
- Thorough peer review
- No space constraints or color figure charges
- Immediate publication on acceptance
- Inclusion in PubMed, CAS, Scopus and Google Scholar
- Research which is freely available for redistribution

Submit your manuscript at  
www.biomedcentral.com/submit

