

RESEARCH ARTICLE

Open Access

Human monocytes and macrophages differ in their mechanisms of adaptation to hypoxia

Monique Fangradt^{1,2†}, Martin Hahne^{1,2,3*†}, Timo Gaber^{1,2,4}, Cindy Strehl^{1,2}, Roman Rauch¹, Paula Hoff^{1,2}, Max Löhning^{1,2}, Gerd-Rüdiger Burmester¹ and Frank Buttgerit^{1,2,4}

Abstract

Introduction: Inflammatory arthritis is a progressive disease with chronic inflammation of joints, which is mainly characterized by the infiltration of immune cells and synovial hyperproliferation. Monocytes migrate towards inflamed areas and differentiate into macrophages. In inflamed tissues, much lower oxygen levels (hypoxia) are present in comparison to the peripheral blood. Hence, a metabolic adaptation process must take place. Other studies suggest that Hypoxia Inducible Factor 1-alpha (HIF-1 α) may regulate this process, but the mechanism involved for human monocytes is not yet clear. To address this issue, we analyzed the expression and function of HIF-1 α in monocytes and macrophages, but also considered alternative pathways involving nuclear factor of kappa light polypeptide gene enhancer in B-cells (NF κ B).

Methods: Isolated human CD14⁺ monocytes were incubated under normoxia and hypoxia conditions with or without phorbol 12-myristate 13-acetate (PMA) stimulation, respectively. Nuclear and cytosolic fractions were prepared in order to detect HIF-1 α and NF κ B by immunoblot. For the experiments with macrophages, primary human monocytes were differentiated into human monocyte derived macrophages (hMDM) using human macrophage colony-stimulating factor (hM-CSF). The effects of normoxia and hypoxia on gene expression were compared between monocytes and hMDMs using quantitative PCR (quantitative polymerase chain reaction).

Results: We demonstrate, using primary human monocytes and hMDM, that the localization of transcription factor HIF-1 α during the differentiation process is shifted from the cytosol (in monocytes) into the nucleus (in macrophages), apparently as an adaptation to a low oxygen environment. For this localization change, protein kinase C alpha/beta 1 (PKC- α/β_1) plays an important role. In monocytes, it is NF κ B1, and not HIF-1 α , which is of central importance for the expression of hypoxia-adjusted genes.

Conclusions: These data demonstrate that during differentiation of monocytes into macrophages, crucial cellular adaptation mechanisms are decisively changed.

Introduction

Inflammatory arthritis is characterized by infiltration of immune cells and local tissue hypoxia [1-3]. Mature monocytes migrate towards sites of inflammation and infection where they differentiate into inflammatory macrophages or into dendritic cells (DCs) [1,4,5]. Macrophages have the highest phagocytic potential of cells in the area of inflammation. They also present the antigen components previously processed via the major

histocompatibility complex II (MHC II) and, via cytokines, attract other macrophages, granulocytes and T-cells into inflamed areas.

Monocytes and macrophages require energy in the form of adenosine triphosphate (ATP) in order to facilitate motion (migration to achieve phagocytosis), activation (signal cascade, initiation, maintenance, cytokine production) and effector functions (phagocytosis, antigen presentation, regulatory functions) [4]. Under aerobic conditions, the energy supply of the cells occurs via oxidative phosphorylation (OxPhos) and glycolysis. In the absence of oxygen (that is, under hypoxic conditions), OxPhos does not occur and only glycolysis remains for

* Correspondence: hahne@drfz.de

† Contributed equally

¹Department of Rheumatology and Clinical Immunology, Charité University Hospital, Charitéplatz 1, Berlin, 10117 Germany

Full list of author information is available at the end of the article

ATP production, because this process does not require oxygen [6,7].

Hypoxia occurs in joint inflammation such as during the pathogenesis of rheumatoid arthritis [1,5], fracture hematomas [8], and malignant tumors [9]. Ng *et al.* demonstrated in recent *in vivo* studies that an inverse correlation exists between synovial oxygen partial pressure and inflammatory activity in patients with arthritis: the stronger the inflammation, the more pronounced the local hypoxia. Kennedy *et al.* showed anti-TNF-therapy, widely used to treat RA, increases the oxygen partial pressure in the joint. For the initial inflammatory environment in an early fracture hematoma, the specific cytokine pattern and typical gene signatures in immune cells reflect a situation of local hypoxia [8]. In addition, Vaupel *et al.* showed the important role of hypoxia and hypoxia-inducible factors (HIFs) in tumorigenesis [9].

During monocytopoiesis, monocyte precursor cells in the bone marrow, monocytes in the blood and macrophages in the tissue are subjected to very different oxygen levels. For example, an oxygen partial pressure (pO_2) of < 10 mmHg (1.3% O_2) is present in the bone marrow of mice [10]. In contrast, much higher pO_2 values of 50 to 100 mmHg (6 to 13% O_2) in the peripheral blood and of 20 to 50 mmHg (approximately 2.5 to 6.0% O_2) in healthy tissue were measured [11]. Furthermore, in inflamed areas macrophages face pathophysiological hypoxia. In these regions, the oxygen content is lower than in healthy tissues because of imbalance between provision and consumption of oxygen. Disturbed blood circulation and inflammatory swellings resulting in a lengthening of the diffusion distance decrease the oxygen supply whereas the influx of metabolically active immune cells strongly increases the oxygen consumption [12]. For these reasons, cells are forced to adapt immediately to the reduced pO_2 levels when entering these low oxygenated areas. The mechanism of this adaptation and the temporal relationship of this response to activation and migration are not yet fully understood.

Rapid adaptation of monocytes to hypoxia may involve HIF or other factors. In other cells (for example, T-cells), it is known that the transcription factor HIF-1 under hypoxic conditions is translocated into the nucleus and binds to promoter regions of target genes to enable the necessary adaptation and maintenance of basic functions like motion, activation and effector cell function [12,13]. However, there are divergent views on the expression and function of HIF in primary human monocytes. Neither HIF-1 α , HIF-2 α nor HIF-3 α were found by Elbarghati *et al.* in primary monocytes after incubation under hypoxia for 24 h. The authors suspected that the α -subunit of HIF is not expressed, because the peripheral blood as a place of residence of circulating monocytes is

characterized physiologically by a high pO_2 [11,14]. However, it should be noted, that monocytes have to adapt to lower oxygen levels immediately once they start the process of being attracted to the vessel's wall, migrating into the inflamed tissue and starting to differentiate into macrophages. CXCR4 transcript levels have been shown to increase in monocytes facing hypoxia, which suggests HIF is crucially involved in regulating the trafficking [15]. Furthermore, in myeloid cell lines like THP-1 cells incubated under hypoxia, HIF-1 α was detectable [16]. There have also been reports that nuclear factor of kappa light polypeptide gene enhancer in B-cells (NF κ B), a transcription factor also regulated by hypoxia, is involved in the adaptation of primary human monocytes to hypoxia [17].

Here we have examined how human monocytes adapt to hypoxic conditions during their differentiation into macrophages. We focused on the analysis of expression and function of HIF-1, but also considered alternative pathways involving NF κ B.

Materials and methods

Antibodies and reagents

PMA, macrophage colony stimulating factor 1 (hM-CSF), and GÖ 6976 were purchased from Sigma Aldrich Chemie GmbH (Hamburg, Germany), ImmunoTools (Friesoythe, Germany), Merck KgaA (Darmstadt, Germany). For toll like receptor (TLR) stimulation, hTLR ligand Set II was bought from Apotech (Epalinges, Switzerland). For immunoblotting, mouse monoclonal anti-HIF-1 α antibody was bought from BD Transduction Laboratories (Heidelberg, Germany); mouse anti- β -actin antibody was purchased from Sigma-Aldrich (Hamburg, Germany); goat polyclonal anti-HIF-2 α , goat polyclonal anti-Lamin B and mouse anti-Jun-B antibody were bought from Santa Cruz Biotechnology (Heidelberg, Germany); mouse monoclonal anti-NF κ B p100/p52, anti-NF κ B p105/p50, anti-NF κ B p65, anti-c-Rel, anti-c-Fos, anti-c-Jun antibody were bought from Cell Signaling (Frankfurt/Main, Germany); anti-mouse IgG HRP and anti-goat IgG HRP were bought from Promega (Mannheim, Germany).

Monocyte isolation, culture and macrophage differentiation

Human peripheral blood (buffy coats) was obtained from healthy donors (DRK-Blutspendedienst Ost gemeinnützige GmbH, Berlin/Brandenburg/Sachsen, Germany, with approval from the Charité Ethics Review Board). Peripheral blood mononuclear cells from these buffy coats were then immediately isolated by density gradient centrifugation using Ficoll-Paque™ Plus technique (Amersham Bioscience AB, Freiburg, Germany). To ensure a stable experimental setup and comparable starting conditions, CD14⁺ monocytes were enriched up to 99% purity and > 95% viability (data not shown) by

MACS using anti-human CD14 conjugated magnetic beads (Miltenyi Biotec, Bergisch Gladbach, Germany) and then immediately used for the experiments. Monocytes were cultured at 4×10^6 cells/ml in RPMI 1640 supplemented with 10% volume/volume percent (v/v) heat-inactivated FCS (Sigma-Aldrich, Hamburg, Germany), 100 units/ml penicillin G, 100 µg/ml streptomycin (both PAA Laboratories, Pasching, Austria), and 50 µM 2-ME (Sigma-Aldrich, Hamburg, Germany). Monocytes were incubated with 25 nM hM-CSF for 7 days to differentiate into monocyte derived macrophages (hMDM).

Culture of cell lines

THP-1, HL-60, and U937 cells (American Type Culture Collection) were cultured in Roswell Park Memorial Institute media (RPMI) 1640 supplemented with 10% (v/v) heat-inactivated FCS, 100 units/ml penicillin G, 100 µg/ml streptomycin, and 50 µM 2-ME. Human microvascular endothelial cells (HMEC-1) were purchased from the Center of Disease Control (Atlanta) and were cultivated in endothelial basal medium (PAA Laboratories GmbH, Pasching, Austria) supplemented with 5% (v/v) heat-inactivated FCS (Sigma-Aldrich, Hamburg, Germany), 100 units/ml penicillin G, 100 µg/ml streptomycin (both PAA Laboratories GmbH, Pasching, Austria), 1% (v/v) 200 mM L-glutamine, 0.01% (v/v) endothelial growth factor (EGF) (100 µg/ml), 0.2% (v/v) hydrocortisone (380 µM) (both Sigma) and grown in 0.2% gelatine-coated 75 cm² culture flasks or 24-well plates, respectively.

Induction of hypoxia and stimulation

Cells were incubated in a humidified hypoxic chamber (Binder, Tuttlingen, Germany) at 5% CO₂ level and less than 1% O₂ balanced with N₂. Normoxic controls were incubated at 5% CO₂ in a humidified atmosphere with 18% O₂. Stimulation was done with PMA 10 ng/ml (16 nM) (Sigma Aldrich Chemie GmbH, Hamburg, Germany). For kinetic analyzes under hypoxia, monocytes were incubated in a water-jacket chamber sealed with a Clark-type oxygen electrode (Strathkelvin Instruments, North Lanarkshire, Scotland) as described previously [12].

RNA isolation and quantitative real-time PCR (qPCR) of selected genes

After cell lysis, total RNA was extracted (RNeasy Mini Kit; Qiagen, Hilden, Germany) and the quality was assessed on a Bioanalyzer (Agilent). The cDNA was synthesized by reverse transcription using TaqMan[®] Reverse Transcription Reagents (Applied Biosystems, Darmstadt, Germany). qPCR was carried out using the LightCycler[®] Fast Start DNA Master SYBR[®] Green I Kit (Roche, Mannheim, Germany). Data were normalized to the expression of β-actin (ACTB). All primers

used were obtained from TIB Molbiol (Berlin, Germany): β-actin (*ACTB*), *gACAggATgCgAAggAgATCACT*, *TgATCCACATCTgCTggAaggT*; hypoxia-inducible factor 1, alpha subunit (*HIF1A*), *CCATTAgAAAgCagTTCCgC*, *TgggTAggAgATggAgATgC*; lactate dehydrogenase A (*LDHA*), *ACCCAgTTTCCACCATgATT*, *CCCAAAATgCAAggAACACT*; phosphoglycerate kinase 1 (*PGK1*), *ATggATgAggTggTgAAAgC*, *CAGTgCTCA-CATggCTgACT*; chemokine-receptor 4 (*CXCR4*), *ggCATgACggACAAGTACAggCT*, *AAAgTACCAgTTTgC-CACggC* (Table 1).

Immunoblotting

Cell lysis: for whole cell extracts of monocytes, 10^6 cells were lysed in 20 µl Laemmli buffer. For the preparation of nuclear/cytoplasmic fraction, 4×10^6 cells were lysed using the Nuclear Extract Kit from Active Motif (La Hulpe, Belgium), according to the manufacturer's instructions.

Immunodetection of proteins: 20 µl of whole cell extract or nuclear/cytoplasmic fraction was separated by SDS-PAGE and blotted onto polyvinylidene difluoride membranes (Millipore, Darmstadt, Germany). Blotted proteins were analyzed as indicated and visualized by enzymatic chemiluminescence (Amersham Biosciences, Freiburg Germany).

Statistical analyzes

Data shown are reported as the mean ± SD of at least six experiments. Differences between normally distributed groups were compared using the Student's *t*-test and in non-normally distributed groups with the Mann-Whitney *U*-test for independent groups and with the Wilcoxon *t*-test for dependent samples.

Results

HIF-1α is stabilised under hypoxia in human monocytes but remains in the cytoplasm

In order to investigate first the stabilisation of HIF-1α as a function of pO₂ values and duration of incubation, MACS-isolated CD14⁺ monocytes were incubated in a Clark-type electrode for 5 h (Figure 1A) with a subsequent reoxygenation time of 12 minutes. Immunoblot analyzes revealed that monocyte stabilisation of HIF-1α begins when hypoxia (pO₂ < 2%) commences. With increasing duration of hypoxia, the accumulation of HIF-1α increased (Figure 1B). There was marked accumulation of HIF-1α during incubation under hypoxia. As expected, reoxygenation caused an immediate degradation of HIF-1α (Figure 1B).

Next, we analyzed the cytosolic and nuclear fractions after 5 h incubation, in order to define the exact location of HIF-1α. HIF-1α was found exclusively in the cytoplasm and not in the nuclear fraction of hypoxic monocytes (Figure 1C).

Table 1 Primersets used

Gene symbol	Gene name	Gene function	Primerset
<i>ACTB</i>	beta-actin	Structural housekeeper	<i>gACAggATgCAgAAggAgATCACT</i> <i>TgATCCACATCTgCTggAAggT</i>
<i>HIF1A</i>	hypoxia-inducible factor 1, alpha subunit	Transcription factor	<i>CCATTAgAAAgCagTTCCgC</i> <i>TgggTAggAgATggAgATgC</i>
<i>LDHA</i>	lactate dehydrogenase A	glycolysis enzyme	<i>ACCCAgTTTCCACCATgATT</i> <i>CCCCAAATgCAAggAACACT</i>
<i>PGK1</i>	phosphoglycerate kinase 1	glycolysis enzyme	<i>ATggATgAggTggTgAAAgC</i> <i>CAgTgCTCACATggCTgACT</i>
<i>CXCR4</i>	chemokine-receptor 4	chemokine-receptor	<i>ggCATgACggACAAGTACAggCT</i> <i>AAAgTACCgTTTgCCACggC</i>

TLR stimulation does not affect HIF-1 α localization

Following these observations, we investigated whether concurrent TLR stimulation of human hypoxic monocytes is needed for translocation of HIF-1 α into the nucleus. We incubated the cells for 5 h under hypoxia, with concurrent stimulation of TLR1-9 using a range of ligands (Figure 2A). TLR stimulation under hypoxic conditions did not lead to translocation of HIF-1 α into the nucleus, regardless of the ligand and concentration used. Representative experimental results are shown in Figure 2B-D, obtained with Pam₃CSK₄3HCl (toll-like receptor (TLR)-1/2 stimulation), lipopolysaccharide LPS (TLR4 stimulation) and R-848 (TLR7/8 stimulation). Under all hypoxic conditions tested, HIF-1 α was detectable exclusively in the cytosol fraction of primary human monocytes.

PKC- α / β ₁ is essential for HIF-1 α translocation

We examined whether stimulation with PMA leads to translocation of HIF-1 α into the nucleus. PMA is usually applied to differentiate monocytes over a short time to a macrophage-like phenotype. HIF-1 α cannot be found in unstimulated monocytes when incubated under normoxia, as shown by immunoblot analyzes (Figure 3A). However, if the cells were stimulated with PMA for 5 h under normoxia, a weak HIF-1 α signal in the cytosol fraction was detectable. Although HIF-1 α was detectable under hypoxia in unstimulated monocytes exclusively in the cytoplasm, in hypoxic PMA-stimulated monocytes it was detectable not only in the cytoplasm, but also in the nucleus. The signal strength of HIF-1 α seen in hypoxic PMA-stimulated cells was stronger than in hypoxic unstimulated monocytes.

Since PMA is known to be a PKC activator, we incubated monocytes for 5 h under hypoxia stimulated with PMA, with concurrent addition of the PKC- α / β ₁- inhibitor, Gö6976, at increasing concentrations. Figure 3B shows that the inhibitor at a concentration of 50 nM reduced the accumulation of HIF-1 α in the nucleus. With a Gö6976 concentration of 100 nM, HIF-1 α was no longer detectable in the nucleus. These data demonstrate that PKC- α / β ₁ is

essential for the transport of HIF-1 α from the cytoplasm into the nucleus.

Monocyte differentiation to macrophages leads to HIF-1 α translocation

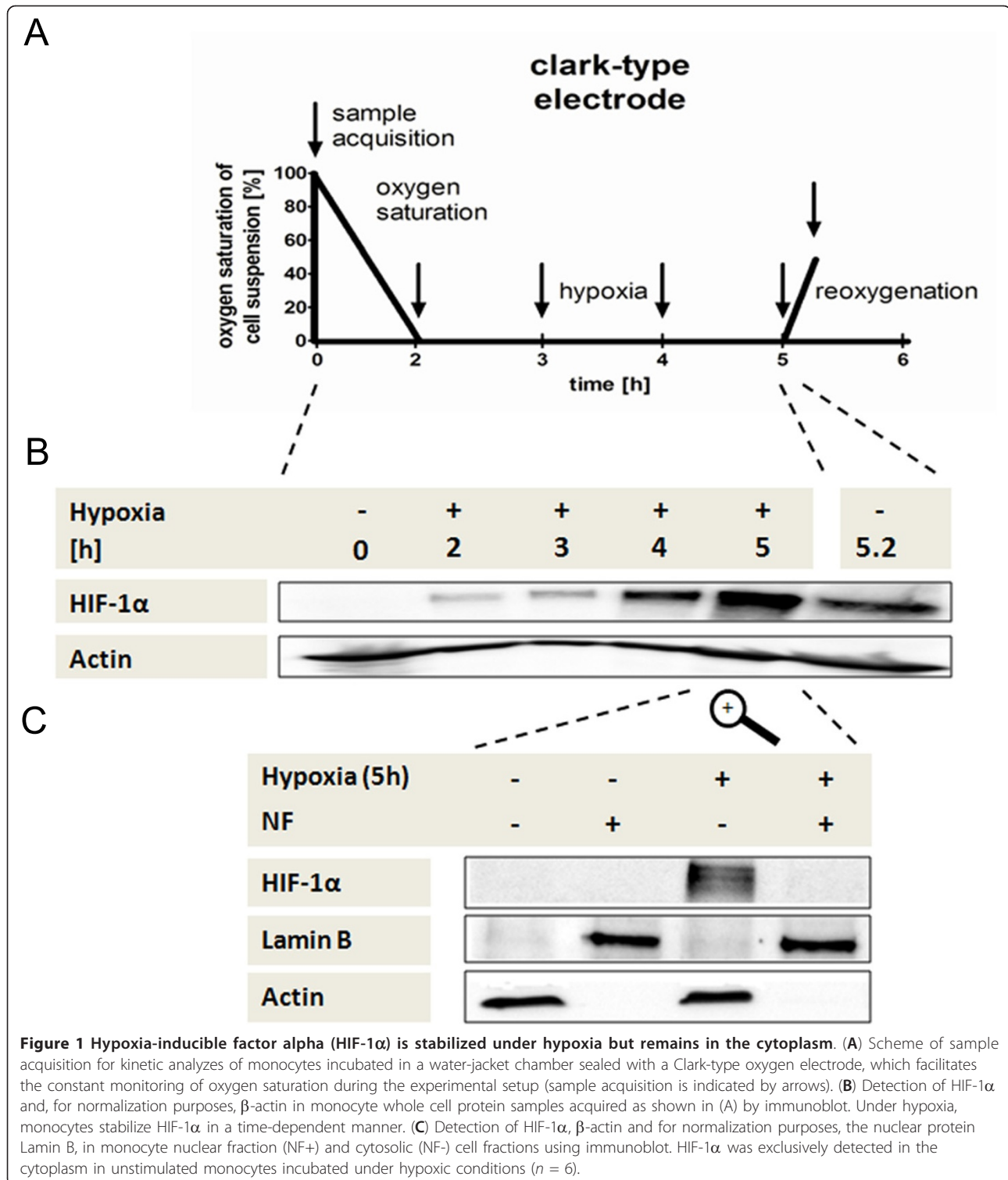
We considered whether differentiation of human monocytes into macrophages (hMDMs) using hM-CSF also caused hypoxia-induced translocation of HIF-1 α into the nucleus. The macrophage nuclear fraction was identified using the location of Lamin B; the location of actin was not used as this may be found in the nuclear fraction of macrophages due to alterations in the cytoskeleton of macrophages after stimulation, as described by Hartwig and Janmey [18].

Incubation of monocytes with 25 nM hM-CSF over 7 days led to differentiation into hMDM. After incubation of monocytes and hMDMs for 5 h under hypoxia, HIF-1 α in the monocytes could only be detected in the cytosolic compartment, while in hMDMs HIF-1 α was seen to reside in the nuclear extract (Figure 4A).

We also considered whether any possible prior adhesion of human monocytes to endothelial cells, as an initial step of migration, could initiate the translocation of HIF-1 α into the nucleus. Human monocytes were incubated for 5 h in plates with wells coated with human microvascular endothelial cells (HMEC-1), under hypoxia and under normoxia. The cellular localization of HIF-1 α was investigated. We observed that co-culture with endothelial cells of this type did not induce accumulation of HIF-1 α in the nucleus of the monocytes. HIF-1 α was found exclusively in the cytosol fraction of monocytes, as assessed by immunoblot (Figure 4B); HIF-1 α was not detectable under normoxia. Taken together, these findings suggest that adhesion of monocyte to the vascular wall is not sufficient for translocation of HIF-1 α to the nucleus.

Hypoxia-induced gene expression of human monocytes versus hMDMs

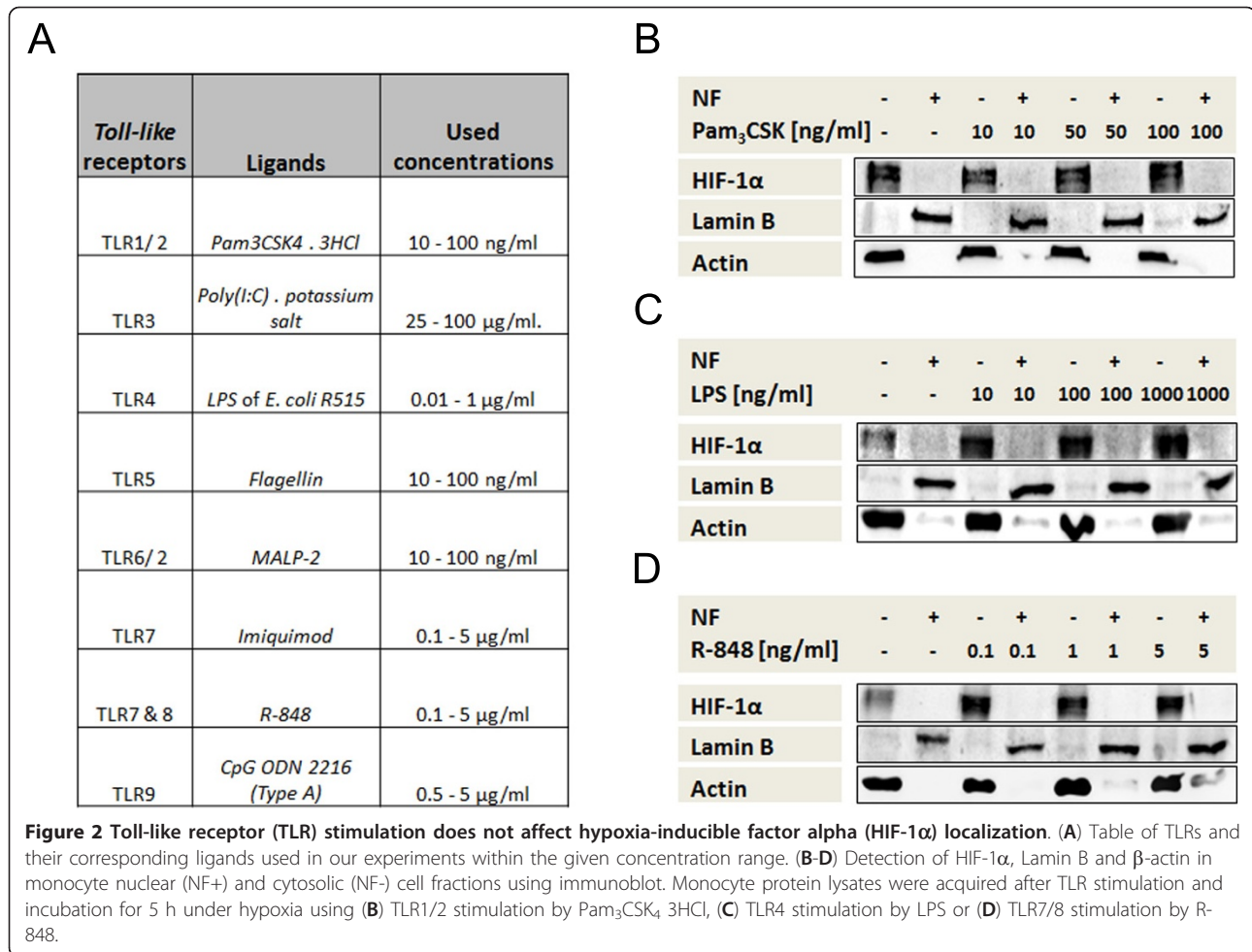
Next we compared the expression of selected hypoxia-induced genes in human monocytes and hMDMs. We



examined genes that have been identified as typical HIF-1 target genes such as the glycolysis enzymes *LDHA* and *PGK1*, and the chemokine receptor *CXCR4*.

In monocytes incubated under hypoxic conditions - in contrast to normoxia - genes for *LDHA* and *CXCR4*

were significantly ($P < 0.05$) upregulated, although HIF-1 α is not present in the nucleus; the gene for *PGK1* showed increased expression but this did not reach statistical significance (Figure 5A-C). *HIF1A* as a target gene of HIF-1 itself is regulated at the protein level and



therefore showed no measurable induction (Figure 5D). Macrophages under normoxia showed higher expression of the genes *LDHA* (1.7-fold) and *PGK1* (2.3-fold) than monocytes (Figure 5A and 5B). There was no significant difference in the expression of these genes under hypoxia versus normoxia, presumably because metabolism had already been switched from oxidative phosphorylation/respiration to anaerobic glycolysis during differentiation.

Similar findings were observed for *CXCR4* (Figure 5C), where hypoxic incubation did not lead to a significant increase of *CXCR4* expression in hMDMs. Also in hMDMs, hypoxia did not induce any measurable upregulation of *HIF1A* (Figure 5D).

Incubation of monocytes under hypoxia leads to translocation of transcription factor NFκB1 into the nucleus

As the expression of HIF target genes (for example, *LDHA*, *CXCR4*) in monocytes was induced by hypoxia although HIF-1α was not present in the nucleus, we

considered other transcription factors that could be involved.

We examined the cellular localization of transcription factors NFκB p100/p52, c-Rel, and c-Jun (Figure 6A), NFκBp105/p50 and c-Fos (Figure 6B), and Jun B and NFκB p65 (Figure 6C) in monocytes that were incubated for 5 h under hypoxia. Although other transcription factors (for example, c-Fos and NFκB p65) did not change their localization when incubated under hypoxic versus normoxic conditions, NFκBp105 (the inactive form of NFκB1) remained in the cytoplasm, while the active form NFκBp50 was translocated into the nucleus. The active form of NFκB2 (NFκBp52) and c-Jun could be seen in the nucleus under normoxic, but not under hypoxic conditions.

THP-1, HL-60, and U937 cells express HIF-1α in the cell nucleus under hypoxic and normoxic conditions

Myeloid cell lines are often used as an experimental model for primary human monocytes. We considered in which cellular compartment HIF-1α could be found in

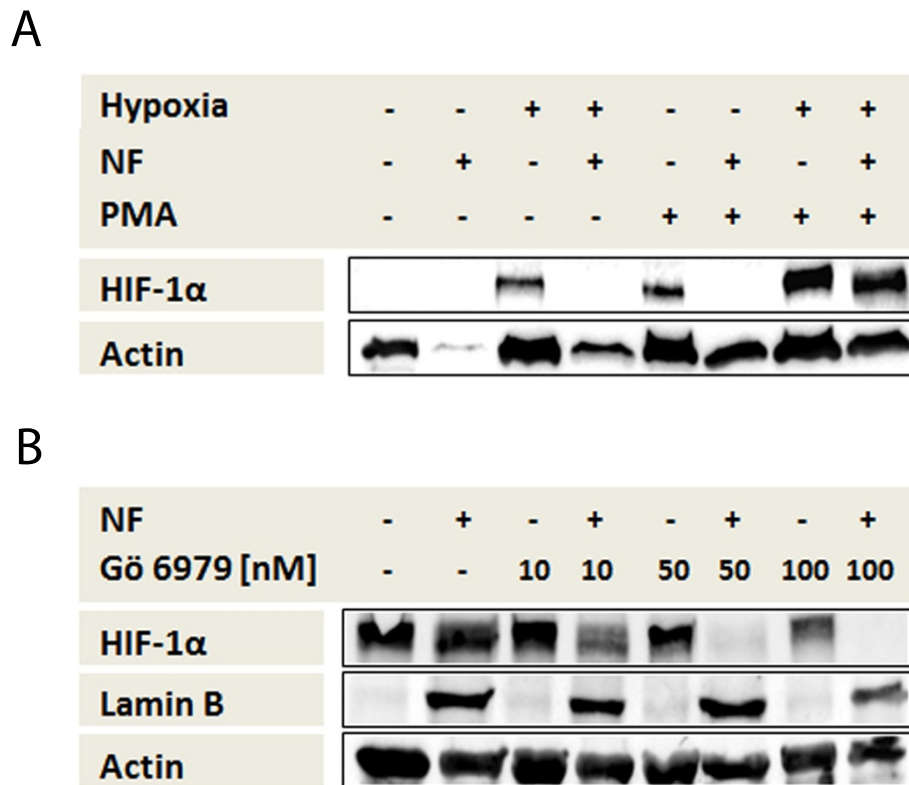


Figure 3 Protein kinase (PKC)- α/β_1 is essential for hypoxia-inducible factor alpha (HIF-1 α) translocation. (A+B) Detection of HIF-1 α , Lamin B and β -actin in nuclear (NF+) and cytosolic (NF-) cell fractions of primary human monocytes using immunoblot. (A) Monocyte protein lysates were acquired after PMA stimulation and incubation for 5 h under hypoxia and under normoxia as indicated. (B) Monocyte protein lysates were acquired after PMA stimulation following PKC- α/β_1 inhibition using Gö6976 as indicated and subsequent incubation for 5 h under hypoxia. (A, B) PMA stimulation for 5 h under hypoxia leads to nuclear translocation of HIF-1 α , and specific inhibition of PKC- α/β_1 by Gö6976 prevents translocation of HIF-1 α .

unstimulated and PMA-stimulated myeloid cell lines (THP-1, HL-60, and U937) under hypoxic conditions. We identified HIF-1 α in the nucleus both under normoxic and hypoxic conditions with or without PMA stimulation (See Figure S1 A-C in Additional file 1). We conclude that in this regard, the cell lines clearly differ from primary human monocytes and behave like hMDMs. This is of concern as these cell lines, but not human monocytes, are routinely used for research on bioenergetic issues (for example, adaptation to hypoxia).

Discussion

Circulating blood monocytes face oxygen concentrations of more than 40 mmHg, which fuel oxidative phosphorylation. However, upon migration to inflamed joints, monocytes encounter hypoxic conditions and must adapt immediately to the reduced pO₂. For several different cell types, it has been shown that the transcription factor HIF-1 under hypoxic conditions is translocated into the nucleus where it binds to promoter regions of target genes. This enables cells to adapt and maintain their

basic and specific functions [19,20]. Elbarghati *et al.* reported recently that primary human macrophages but not monocytes rapidly up-regulate HIF-1 α and HIF-2 α proteins upon exposure to hypoxia, with translocation of these proteins into the nucleus [14].

We demonstrate here that the transcription factor HIF-1 α also accumulates in quiescent human monocytes under hypoxia, but is present solely in the cytosol. For this reason, we postulate that it cannot be responsible for the transcriptional induction of typical hypoxia target genes in the nucleus. It is not clear why monocytes differ in this regard from many other cell types, where HIF-1 α under hypoxia is translocated into the nucleus [21-25]. One possibility is that the HIF-induced adaptation mechanism in monocytes is not necessary because of the plentiful oxygen supply present in peripheral blood. The stabilisation of HIF-1 α in the cytosol under hypoxic conditions may, therefore, reflect a pre-active state that becomes active when the cells start their migration into low oxygen tissue areas. However, it should be noted that we also studied quiescent and PHA-stimulated peripheral

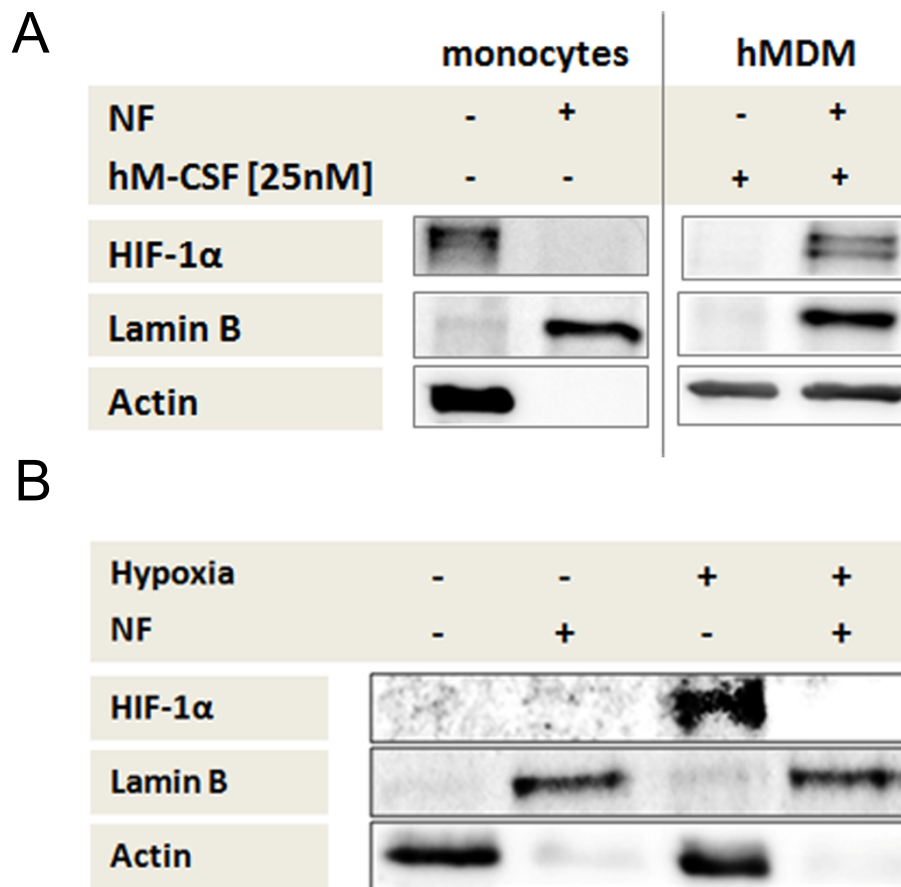


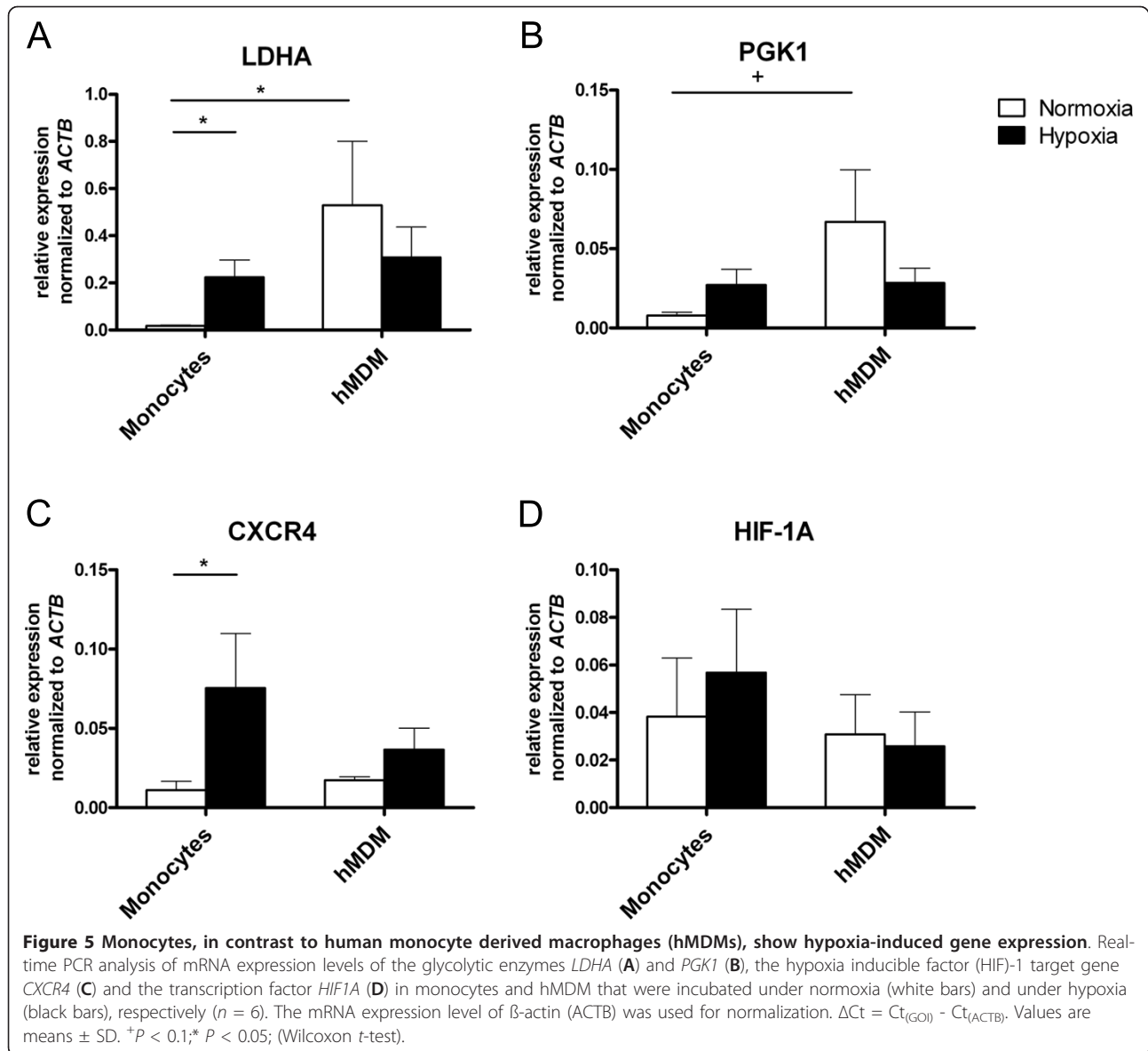
Figure 4 Hypoxia-inducible factor alpha (HIF-1α) translocation after differentiation of monocytes to macrophages and co-culture with endothelial cells. (A, B) Detection of HIF-1α, Lamin B and β-actin in monocyte or hMDM nuclear (NF+) and cytosolic (NF-) cell fractions using immunoblot. **(A)** Protein lysates were acquired after incubation of human monocytes and hMDM for 5 h under hypoxia. Differentiation of monocytes to macrophages leads to HIF-1α translocation into the nucleus. **(B)** Monocyte protein lysates were acquired after incubation of human monocytes on human endothelial cells (HMEC-1, human microvascular endothelial cells) coated well plates for 5 h under normoxia and under hypoxia. Co-culture of monocytes with endothelial cells is not sufficient for the translocation of HIF-1α.

human blood CD3⁺CD4⁺ T-cells, which also circulate in oxygen-rich blood. In contrast to monocytes, hypoxic conditions induced HIF-1α in these cells, with translocation into the nucleus as shown by immunoblotting [12]. From this observation, we suggest that the HIF-1α regulation mechanism may be a feature of the evolutionary younger cells of the adaptive immune system, but not of evolutionary older cells of the innate immune system, such as monocytes.

The apparent lack of involvement of HIF-1α in regulating expression of hypoxia-induced genes in monocytes suggests that other transcription factors mediate this effect. In the literature, it has been reported that adaptive responses to hypoxia are regulated by several transcription factors, including HIF-1, HIF-2, ETS-1, cAMP response element binding protein, activator protein-1 and nuclear factor-κB [26-33]. Hence, we examined various possible transcription factors and found

that the active form of NFκB1, NFκBp50, is translocated into the nucleus of the human monocytes as a reaction towards a pO₂ of < 2%. In good agreement with this observation, Battaglia *et al.* have previously shown DNA binding of NFκBp50 under hypoxia in primary human monocytes by means of a supershift analysis [17]. Furthermore, Oliver *et al.* have described the selective activation of the canonical NF-κB pathway via p65 by intermittent and sustained hypoxia in HeLa cells [34]. The non-canonical NF-κB pathway via p52 is not impacted by hypoxia. Our results are consistent with these findings as we show, to our knowledge for the first time in primary monocytes, that p50 is part of the canonical pathway induced by sustained hypoxia.

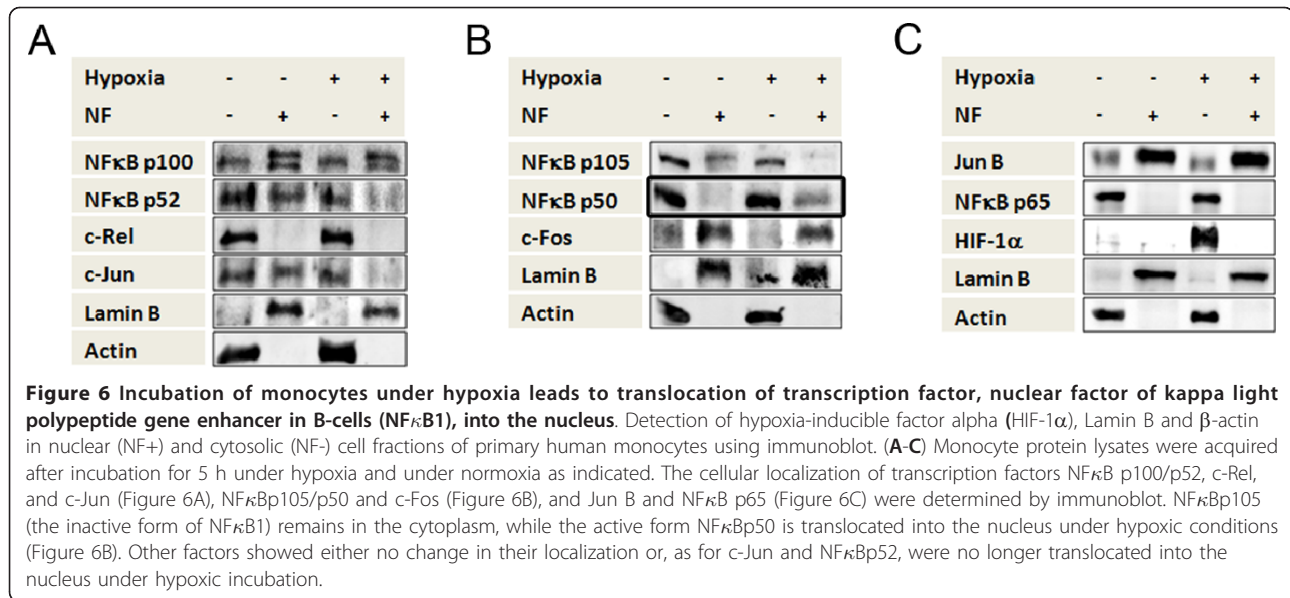
We therefore suggest that NFκB1 serves as a key regulator enabling the immediate adaptation of monocytes to hypoxia during migration from blood into the tissue environment. We suggest that, during the differentiation



process of human monocytes into macrophages, the more potent and possibly more robust HIF-1 system is activated. The HIF-1 system may be needed for the rapid adaptation to varying oxygen concentrations, which is of essential functional importance for long-living tissue macrophages. Indeed, we demonstrate here that the stimulation of the monocytes with PMA (which although non-physiological is usually applied to differentiate monocytes over a short time to a macrophage-like phenotype) and the more physiological induction of monocyte differentiation by means of M-CSF cause the translocation of HIF-1 α into the nucleus of long-living tissue macrophages. The presence of HIF-1 α in the nucleus of macrophages or hMDMs under hypoxia has already been verified by other groups [14,35-37]. HIF-1 α

was also detectable in the nucleus of different myeloid cell lines (THP-1, HL-60, and U937) under hypoxic conditions. Although often used as experimental models of monocytes, these cell line cells are highly proliferative and malignant cells with numerous differences from macrophages, hMDMs, and monocytes. With regard to the HIF-1 pathways, these cell lines behave like macrophages or hMDMs, but not like monocytes. This should be considered when using these cell lines as models to analyze the bioenergetic functions of monocytes and/or macrophages in inflammatory arthritis.

Our observation that both PMA stimulation and M-CSF-induced differentiation of monocytes into macrophages causes the translocation of HIF-1 α into the nucleus prompted a search for potential regulators.



Since PKC- α/β_1 is strongly activated by PMA stimulation, we hypothesized that this protein kinase enzyme could play a key role. Indeed, our experiments demonstrated that the inhibition of PKC by Gö6976 leads to abrogation of HIF-1 α translocation into the nucleus. Our observation is in agreement with data provided by Chang and Beezhold who have proved the existence of both prevailing PKC-isoforms α and β in primary human monocytes [38]. Lin *et al.* recently showed Gö6976-mediated inhibition of PKC- α and membrane translocation during differentiation into MDMs, and consequently diminished differentiation of MDMs [39]. It should be noted, however, that the exact mechanism of the PKC-mediated transport of HIF-1 α into the nucleus is currently still unclear.

It was interesting to realize that HIF-1 α is not shifted into the nucleus if human monocytes are incubated under hypoxia with concurrent TLR stimulation. Furthermore, contact of monocytes with endothelial cells (that is, the initial migration step and therefore the beginning of the differentiation) is not sufficient to induce HIF-translocation. Taken together, these data clearly demonstrate that neither the contact of monocytes with antigen in the hypoxic areas nor the contact of monocytes with endothelial cells causes the translocation of HIF-1 α into the nucleus; rather, it appears to be the differentiation process *per se* that activates the HIF-1 system.

In agreement with Bosco *et al.* [40], we showed that hypoxia strengthens the genetic expression of the glycolysis enzyme LDHA. HIF-1 α is not present in the nucleus under these conditions so we infer this effect to be mediated by NFκBp50. However, macrophages demonstrate significantly higher expressions of the gene

LDHA (and another enzyme involved in glycolysis, PGK1) under normoxia than monocytes. In addition, the expression of these genes is not increased by incubating macrophages under hypoxic conditions (LDHA $P = 0.39$, PGK $P = 0.26$). A constitutional PKC over-expression constantly inducing the HIF-1 system may be a possible explanation of these observations [41].

Interestingly, the observations made for the glycolysis genes differ from those for the chemokine receptor CXCR4. It should be noted that the expression of this chemokine receptor is oxygen-dependent. Therefore, the chemotactic behaviour of monocytes can be adapted to variable oxygen conditions. Bosco *et al.* described a genetic induction of CXCR4 in a transcriptome characterisation of monocytes incubated under hypoxia [40]. We also found the CXCR4 gene in monocytes to be significantly induced under hypoxia. However, in contrast to glycolysis genes, the CXCR4 gene expression under normoxia in hMDMs is not more pronounced than in monocytes. Although CXCR4 expression increased in hMDMs with hypoxia, this increase was not significant ($P = 0.17$). A significant increase in the genetic expression for CXCR4 under hypoxia in hMDMs has been described by Fang *et al.* [42]. Schioppa *et al.* showed that in human monocytes and human MDMs, hypoxia induced expression of CXCR4 at the protein level [15]. The authors interpret the navigation process hypoxia/HIF-1/CXCR4 as an important mechanism for the regulation of cell migration into hypoxic tissues or for the retention of cells in hypoxic tissues. This is in line with our finding of hypoxia/HIF-1/CXCR4 for hMDMs but, due to the absence of HIF-1 α in the nucleus of monocytes, as hypoxia/NFκBp50/CXCR4 for monocytes.

Conclusions

In summary, the localization of the transcription factor HIF-1 α is shifted during the differentiation process from the cytosol (in monocytes) to the nucleus (in macrophages), apparently as a PKC- α / β ₁- mediated adaptation to a low oxygen environment. In monocytes, it is NF κ B1, and not HIF-1 α , that is of central importance for the expression of hypoxia-adjusted genes. These data demonstrate that (i) during differentiation crucial cellular adaptation mechanisms are decisively changed and (ii) bioenergetic aspects are of crucial importance for the understanding of underlying pathophysiological processes in inflammatory arthritis.

Additional material

Additional file 1: Figure S1 A-C. Myeloid cell lines (THP-1, HL-60, and U937) express HIF-1 α in the cell nucleus. THP-1 cells (A), HL-60 cells (B) and U937 cells (C) express HIF-1 α in the nucleus under normoxia and hypoxia, with or without PMA stimulation (5 h). THP-1 and U937 show similar expression of HIF-1 α under normoxia and hypoxia (A, C), whereas HL-60 cells demonstrate increased expression of hypoxia-inducible factor (HIF)-1 α under hypoxia (B). All cell lines show a higher expression of HIF-1 α in the presence of PMA (A-C). Detection of HIF-1 α , Lamin B and β -actin in nuclear (NF+) and cytosolic (NF-) cell fractions of myeloid cell lines using immunoblot. (A-C) Protein lysates were acquired after incubation for 5 h under hypoxia and under normoxia as indicated.

Abbreviations

ACTB: β -actin; ATP: adenosine triphosphate; c-AMP: cyclic adenosine monophosphate; CD: cluster of differentiation; cDN: complementary deoxyribonucleic acid; CO₂: carbon dioxide; c: threshold cycle; CXCR: C-X-C motif chemokine receptor; DC: dendritic cell; DRK: Deutsches Rotes Kreuz (German Red Cross); EGF: endothelial growth factor; FCS: fetal calf serum; G \ddot{O} 6976: 12-(2-Cyanoethyl)-6,7,12,13-tetrahydro-13-methyl-5-oxo-5H-indolo[2,3-a]pyrrolo[3,4-c]carbazole; HeLa: Henrietta Lacks cell line; HIF: hypoxia-inducible factor; HL-60: human promyelocytic leukemia cells; hM-CSF: human macrophage colony-stimulating factor; hMMD: human monocyte derived macrophages; HMEC-1: human microvascular endothelial cell line; HRP: horseradish peroxidase; IgG: immunoglobulin G; LDHA: lactate dehydrogenase A; LPS: lipopolysaccharide; MACS: magnetic activated cell sorting; 2-ME: β -mercaptoethanol; MHC: major histocompatibility complex; mmHg: millimeter of mercury; N₂: molecular nitrogen; NF: nuclear fraction; NF κ B: nuclear factor of kappa light polypeptide gene enhancer in B-cells; O₂: molecular oxygen; OxPhos: oxidative phosphorylation; Pam₃CSK₄3HCl: Pam₃Cys-Ser-(Lys)₄-Trihydrochloride; PCR: polymerase chain reaction; PGK1: phosphoglycerate kinase 1; PHA: phytohemagglutinin; PKC: protein kinase C; PMA: phorbol 12-myristate 13-acetate; pO₂: oxygen partial pressure; qPCR: quantitative polymerase chain reaction; R-848: resiquimod; RA: rheumatoid arthritis; RNA: ribonucleic acid; RPMI 1640: Roswell Park Memorial Institute media 1640; SD: standard deviation; SDS-PAGE: sodium dodecyl sulfate polyacrylamide gel electrophoresis; THP-1: human acute monocytic leukemia cell line; TLR: toll like receptor; TNF: tumor necrosis factor; U-937: human histiocytic leukemia cell line; v/v: volume/volume percent.

Acknowledgements

This study was supported (in part) by research funding from the DFG through the Berlin-Brandenburg School for Regenerative Therapies (GSC 203) to MH. We would like to thank Manuela Jakstadt for technical assistance.

Author details

¹Department of Rheumatology and Clinical Immunology, Charité University Hospital, Charitéplatz 1, Berlin, 10117 Germany. ²German Rheumatism

Research Center (DRFZ), Charitéplatz 1, Berlin, 10117 Germany. ³Berlin-Brandenburg School for Regenerative Therapies (BSRT), Foehrer Straße 15, Berlin, 13353 Germany. ⁴Berlin-Brandenburg Center for Regenerative Therapies (BCRT), Foehrer Straße 15, Berlin, 13353 Germany.

Authors' contributions

All authors have made substantial contributions to conception and design of the study, or to acquisition of data and the analysis and interpretation. All authors read and commented on the draft versions of the manuscript and have given final approval of the version to be published.

Competing interests

The authors declare no competing financial or non-financial interests.

Received: 29 February 2012 Revised: 30 June 2012

Accepted: 7 August 2012 Published: 7 August 2012

References

- Ng CT, Biniiecka M, Kennedy A, McCormick J, Fitzgerald O, Bresnihan B, Buggy D, Taylor CT, O'Sullivan J, Fearon U, Veale DJ: **Synovial tissue hypoxia and inflammation in vivo.** *Ann Rheum Dis* 2010, **69**:1389-1395.
- Biniiecka M, Kennedy A, Fearon U, Ng CT, Veale DJ, O'Sullivan JN: **Oxidative damage in synovial tissue is associated with in vivo hypoxic status in the arthritic joint.** *Ann Rheum Dis* 2010, **69**:1172-1178.
- Biniiecka M, Kennedy A, Ng CT, Chang TC, Balogh E, Fox E, Veale DJ, Fearon U, O'Sullivan JN: **Successful tumour necrosis factor (TNF) blocking therapy suppresses oxidative stress and hypoxia-induced mitochondrial mutagenesis in inflammatory arthritis.** *Arthritis Res Ther* 2011, **13**:R121.
- Buttgereit F, Burmester GR, Brand MD: **Bioenergetics of immune functions: fundamental and therapeutic aspects.** *Immunol Today* 2000, **21**:192-199.
- Kennedy A, Ng CT, Chang TC, Biniiecka M, O'Sullivan JN, Heffernan E, Fearon U, Veale DJ: **Tumor necrosis factor blocking therapy alters joint inflammation and hypoxia.** *Arthritis Rheum* 2011, **63**:923-932.
- Straub RH, Cutolo M, Buttgereit F, Pongratz G: **Energy regulation and neuroendocrine-immune control in chronic inflammatory diseases.** *J Intern Med* 2010, **267**:543-560.
- Dziurla R, Gaber T, Fangradt M, Hahne M, Tripmacher R, Kolar P, Spies CM, Burmester GR, Buttgereit F: **Effects of hypoxia and/or lack of glucose on cellular energy metabolism and cytokine production in stimulated human CD4+ T lymphocytes.** *Immunol Lett* 2010, **131**:97-105.
- Kolar P, Gaber T, Perka C, Duda GN, Buttgereit F: **Human early fracture hematoma is characterized by inflammation and hypoxia.** *Clin Orthop Relat Res* 2011, **469**:3118-3126.
- Vaupel P, Hockel M, Mayer A: **Detection and characterization of tumor hypoxia using pO₂ histography.** *Antioxid Redox Signal* 2007, **9**:1221-1235.
- Levesque JP, Winkler IG, Hendy J, Williams B, Helwani F, Barbier V, Nowlan B, Nilsson SK: **Hematopoietic progenitor cell mobilization results in hypoxia with increased hypoxia-inducible transcription factor-1 alpha and vascular endothelial growth factor A in bone marrow.** *Stem Cells* 2007, **25**:1954-1965.
- Sahaf B, Atkuri K, Heydari K, Malipatlolla M, Rappaport J, Regulier E, Herzenberg LA: **Culturing of human peripheral blood cells reveals unsuspected lymphocyte responses relevant to HIV disease.** *Proc Natl Acad Sci USA* 2008, **105**:5111-5116.
- Gaber T, Schellmann S, Ereku KB, Fangradt M, Tykwinska K, Hahne M, Maschmeyer P, Wagegg M, Stahn C, Kolar P, Dziurla R, Löhning M, Burmester GR, Buttgereit F: **Macrophage migration inhibitory factor counterregulates dexamethasone-mediated suppression of hypoxia-inducible factor-1 alpha function and differentially influences human CD4+ T cell proliferation under hypoxia.** *J Immunol* 2011, **186**:764-774.
- Wang GL, Semenza GL: **General involvement of hypoxia-inducible factor 1 in transcriptional response to hypoxia.** *Proc Natl Acad Sci USA* 1993, **90**:4304-4308.
- Elbarghati L, Murdoch C, Lewis CE: **Effects of hypoxia on transcription factor expression in human monocytes and macrophages.** *Immunobiology* 2008, **213**:899-908.
- Schioppa T, Uranchimeg B, Saccani A, Biswas SK, Doni A, Rapisarda A, Bernasconi S, Saccani S, Nebuloni M, Vago L, Mantovani A, Melillo G, Sica A: **Regulation of the chemokine receptor CXCR4 by hypoxia.** *J Exp Med* 2003, **198**:1391-1402.

16. Oda T, Hirota K, Nishi K, Takabuchi S, Oda S, Yamada H, Arai T, Fukuda K, Kita T, Adachi T, Semenza GL, Nohara R: **Activation of hypoxia-inducible factor 1 during macrophage differentiation.** *Am J Physiol Cell Physiol* 2006, **291**:C104-113.
17. Battaglia F, Delfino S, Merello E, Puppo M, Piva R, Varesio L, Bosco MC: **Hypoxia transcriptionally induces macrophage-inflammatory protein-3alpha/CCL-20 in primary human mononuclear phagocytes through nuclear factor (NF)-kappaB.** *J Leukoc Biol* 2008, **83**:648-662.
18. Hartwig JH, Janmey PA: **Stimulation of a calcium-dependent actin nucleation activity by phorbol 12-myristate 13-acetate in rabbit macrophage cytoskeletons.** *Biochim Biophys Acta* 1989, **1010**:64-71.
19. Semenza GL: **Regulation of Metabolism by Hypoxia-Inducible Factor 1.** *Cold Spring Harb Symp Quant Biol* 2011, **76**:347-353.
20. Palazon A, Aragonés Lopez J, Morales-Kastresana A, Ortiz Del Landazuri M, Melero IJ: **Molecular Pathways: Hypoxia response in immune cells fighting or promoting cancer.** *Clin Cancer Res* 2011, **18**:1207-13.
21. Gaber T, Dziurla R, Tripmacher R, Burmester GR, Buttgerit F: **Hypoxia inducible factor (HIF) in rheumatology: low O2! See what HIF can do!** *Ann Rheum Dis* 2005, **64**:971-980.
22. Gaber T, Häupl T, Sandig G, Tykwinska K, Fangradt M, Tschirschmann M, Hahne M, Dziurla R, Erekl K, Lautenbach M, Kolar P, Burmester GR, Buttgerit F: **Adaptation of human CD4+ T cells to pathophysiological hypoxia: a transcriptome analysis.** *J Rheumatol* 2009, **36**:2655-2669.
23. Hughes JM, Groot AJ, van der Groep P, Sersansie R, Vooijs M, van Diest PJ, Van Noorden CJ, Schlingemann RO, Klaassen I: **Active HIF-1 in the normal human retina.** *J Histochem Cytochem* 2010, **58**:247-254.
24. Martin JL, Charboneau R, Barke RA, Roy S: **Chronic morphine treatment inhibits LPS-induced angiogenesis: implications in wound healing.** *Cell Immunol* 2010, **265**:139-145.
25. Zhao Q, Du J, Gu H, Teng X, Zhang Q, Qin H, Liu N: **Effects of YC-1 on hypoxia-inducible factor 1-driven transcription activity, cell proliferative vitality, and apoptosis in hypoxic human pancreatic cancer cells.** *Pancreas* 2007, **34**:242-247.
26. Bandyopadhyay RS, Phelan M, Faller DV: **Hypoxia induces AP-1-regulated genes and AP-1 transcription factor binding in human endothelial and other cell types.** *Biochim Biophys Acta* 1995, **1264**:72-78.
27. Oikawa M, Abe M, Kurosawa H, Hida W, Shirato K, Sato Y: **Hypoxia induces transcription factor ETS-1 via the activity of hypoxia-inducible factor-1.** *Biochem Biophys Res Commun* 2001, **289**:39-43.
28. Rupec RA, Baeuerle PA: **The genomic response of tumor cells to hypoxia and reoxygenation. Differential activation of transcription factors AP-1 and NF-kappa B.** *Eur J Biochem* 1995, **234**:632-640.
29. Schmedtje JF Jr, Ji YS, Liu WL, DuBois RN, Runge MS: **Hypoxia induces cyclooxygenase-2 via the NF-kappaB p65 transcription factor in human vascular endothelial cells.** *J Biol Chem* 1997, **272**:601-608.
30. Taylor CT, Furuta GT, Synnestvedt K, Colgan SP: **Phosphorylation-dependent targeting of cAMP response element binding protein to the ubiquitin/proteasome pathway in hypoxia.** *Proc Natl Acad Sci USA* 2000, **97**:12091-12096.
31. Wang GL, Semenza GL: **Characterization of hypoxia-inducible factor 1 and regulation of DNA binding activity by hypoxia.** *J Biol Chem* 1993, **268**:21513-21518.
32. Wiesener MS, Turley H, Allen WE, Willam C, Eckardt KU, Talks KL, Wood SM, Gatter KC, Harris AL, Pugh CW, Ratcliffe PJ, Maxwell PH: **Induction of endothelial PAS domain protein-1 by hypoxia: characterization and comparison with hypoxia-inducible factor-1alpha.** *Blood* 1998, **92**:2260-2268.
33. Yao KS, Xanthoudakis S, Curran T, O'Dwyer PJ: **Activation of AP-1 and of a nuclear redox factor, Ref-1, in the response of HT29 colon cancer cells to hypoxia.** *Mol Cell Biol* 1994, **14**:5997-6003.
34. Oliver KM, Garvey JF, Ng CT, Veale DJ, Fearon U, Cummins EP, Taylor CT: **Hypoxia activates NF-kappaB-dependent gene expression through the canonical signaling pathway.** *Antioxid Redox Signal* 2009, **11**:2057-2064.
35. Asplund A, Ostergren-Lunden G, Camejo G, Stillemark-Billton P, Bondjers G: **Hypoxia increases macrophage motility, possibly by decreasing the heparan sulfate proteoglycan biosynthesis.** *J Leukoc Biol* 2009, **86**:381-388.
36. Burke B, Tang N, Corke KP, Tazzyman D, Ameri K, Wells M, Lewis CE: **Expression of HIF-1alpha by human macrophages: implications for the use of macrophages in hypoxia-regulated cancer gene therapy.** *J Pathol* 2002, **196**:204-212.
37. Frede S, Stockmann C, Freitag P, Fandrey J: **Bacterial lipopolysaccharide induces HIF-1 activation in human monocytes via p44/42 MAPK and NF-kappaB.** *Biochem J* 2006, **396**:517-527.
38. Chang ZL, Beezhold DH: **Protein kinase C activation in human monocytes: regulation of PKC isoforms.** *Immunology* 1993, **80**:360-366.
39. Lin YF, Lee HM, Leu SJ, Tsai YH: **The essentiality of PKCalpha and PKCbeta translocation for CD14+ monocyte differentiation towards macrophages and dendritic cells, respectively.** *J Cell Biochem* 2007, **102**:429-441.
40. Bosco MC, Puppo M, Santangelo C, Anfoso L, Pfeffer U, Fardin P, Battaglia F, Varesio L: **Hypoxia modifies the transcriptome of primary human monocytes: modulation of novel immune-related genes and identification of CC-chemokine ligand 20 as a new hypoxia-inducible gene.** *J Immunol* 2006, **177**:1941-1955.
41. Roiniotis J, Dinh H, Masendycz P, Turner A, Elsegood CL, Scholz GM, Hamilton JA: **Hypoxia prolongs monocyte/macrophage survival and enhanced glycolysis is associated with their maturation under aerobic conditions.** *J Immunol* 2009, **182**:7974-7981.
42. Fang HY, Hughes R, Murdoch C, Coffelt SB, Biswas SK, Harris AL, Johnson RS, Imityaz HZ, Simon MC, Fredlund E, Greten FR, Rius J, Lewis CE: **Hypoxia-inducible factors 1 and 2 are important transcriptional effectors in primary macrophages experiencing hypoxia.** *Blood* 2009, **114**:844-859.

doi:10.1186/ar4011

Cite this article as: Fangradt et al.: Human monocytes and macrophages differ in their mechanisms of adaptation to hypoxia. *Arthritis Research & Therapy* 2012 **14**:R181.

Submit your next manuscript to BioMed Central and take full advantage of:

- Convenient online submission
- Thorough peer review
- No space constraints or color figure charges
- Immediate publication on acceptance
- Inclusion in PubMed, CAS, Scopus and Google Scholar
- Research which is freely available for redistribution

Submit your manuscript at
www.biomedcentral.com/submit

