

Research article

Open Access

An association between the acute phase response and patterns of antigen induced T cell proliferation in juvenile idiopathic arthritisAntony PB Black^{1,2}, Hansha Bhayani¹, Clive AJ Ryder³, Mark T Pugh⁴, Janet MM Gardner-Medwin³ and Taunton R Southwood^{1,3}¹Department of Rheumatology, Division of Immunity and Infection, University of Birmingham, Birmingham, UK²Current address: MRC Human Immunology Unit, Institute of Molecular Medicine, Oxford, UK³Birmingham Children's Hospital, Birmingham, UK⁴Department of Rheumatology, Birmingham Heartlands and Solihull Hospitals – NHS Trust (Teaching), Birmingham, UKCorrespondence: Taunton R Southwood (e-mail: t.r.southwood@bham.ac.uk)

Received: 26 Apr 2002 Revisions requested: 24 May 2002 Revisions received: 30 May 2003 Accepted: 11 Jun 2003 Published: 7 Jul 2003

Arthritis Res Ther 2003, **5**:R277-R284 (DOI 10.1186/ar791)© 2003 Black *et al.*, licensee BioMed Central Ltd (Print ISSN 1478-6354; Online ISSN 1478-6362). This is an Open Access article: verbatim copying and redistribution of this article are permitted in all media for any purpose, provided this notice is preserved along with the article's original URL.**Abstract**

The aim of this research was to determine whether all memory T cells have the same propensity to migrate to the joint in patients with juvenile idiopathic arthritis. Paired synovial fluid and peripheral blood mononuclear cell proliferative responses to a panel of antigens were measured and the results correlated with a detailed set of laboratory and clinical data from 39 patients with juvenile idiopathic arthritis. Two distinct patterns of proliferative response were found in the majority of patients: a diverse pattern, in which synovial fluid responses were greater than peripheral blood responses for all antigens tested; and a restricted pattern, in which peripheral blood responses to some antigens were more vigorous than those in the synovial fluid compartment. The diverse pattern was generally found in

patients with a high acute phase response, whereas patients without elevated acute phase proteins were more likely to demonstrate a restricted pattern. We propose that an association between the synovial fluid T cell repertoire and the acute phase response suggests that proinflammatory cytokines may influence recruitment of memory T cells to an inflammatory site, independent of their antigen specificity. Additionally, increased responses to enteric bacteria and the presence of $\alpha E\beta 7$ T cells in synovial fluid may reflect accumulation of gut associated T cells in the synovial compartment, even in the absence of an elevated acute phase response. This is the first report of an association between the acute phase response and the T cell population recruited to an inflammatory site.

Keywords: acute phase response, arthritis, juvenile idiopathic arthritis, T cells**Introduction**

Large numbers of memory T cells are found in the inflamed joint [1–3], possibly facilitated by their enhanced capacity to adhere to vascular endothelium of inflamed synovium [4,5]. It is unclear, however, whether all memory T cells have the same propensity to migrate to the inflamed joint, independent of their antigen specificity. If this were the case then it would be expected that synovial fluid mononuclear cell (SFMC) proliferative responses to a wide range of antigens would be enhanced as compared with the peripheral blood mononuclear cell (PBMC) responses,

provided that the individual had previously been exposed to those antigens. Alternatively, it has been suggested that patterns of antigen induced SFMC proliferation reflect an inciting or perpetuating antigenic stimulus [6,7]. In this situation, accumulation of a specific population of T cells in an inflamed joint would be reflected by an antigen-specific SFMC proliferative response. We hypothesized that all memory T cells would have the same propensity for migration into the joint, irrespective of their antigen specificities. The aim of the present study was to test the hypothesis in juvenile idiopathic arthritis (JIA) – a group of diseases

CRP = C-reactive protein; ESR = erythrocyte sedimentation rate; FITC = fluorescein isothiocyanate; HSP = heat shock protein; JIA = juvenile idiopathic arthritis; PBMC = peripheral blood mononuclear cell; SFMC = synovial fluid mononuclear cell; TCR = T cell receptor.

Table 1**Clinical features of patients with juvenile idiopathic arthritis**

Subclass	<i>n</i>	Female/male	Age in years (median [range])	Disease duration in months (median [range])	B27+ (<i>n</i>)	ANA+ (<i>n</i>)
Oligoarthritis	13	8/5	8 (2–17)	34 (6–106)	1	6
Ext. oligoarthritis	2	2/0	12 (10–14)	98 (65–131)	0	1
Systemic arthritis	1	0/1	15	156	0	0
Psoriatic	8	4/4	13 (6–15)	42 (5–175)	2	6
ERA	7	1/6	13 (9–14)	12 (1–60)	3	2
Polyarthritis RF ⁻	5	1/4	10 (5–14)	10 (4–129)	1	3
Polyarthritis RF ⁺	1	1/0	15	12	0	0
Other	2	0/2	11 (9–13)	3 (3–3)	0	0
Total	39	17/22	11 (2–17)	27 (1–175)	7	18

ANA, antinuclear antibody; RF, rheumatoid factor;

Table 2**Antigens, mitogens and IL-2**

Antigen	Working concentration	Source
GroEL (<i>E.coli</i> HSP60)	10 µg/ml	Bioquote Ltd, York, UK
Human heat shock protein	10 µg/ml	Bioquote Ltd
<i>Yersinia enterocolitica</i> lysate	570 µg/ml	Microbiology Department, Queen Elizabeth Hospital, Birmingham, UK
<i>Salmonella typhimurium</i> lysate	300 µg/ml	Microbiology Department, Queen Elizabeth Hospital
Streptolysin O (SLO)	10 µg/ml	Sigma Chemical Co., Poole, UK
Tetanus Toxoid (TT)	10 µg/ml	Statens Serum Institut, Copenhagen, Denmark
IL-2	50 U/ml	EuroCetus BV, Amsterdam, Holland
Phytohaemagglutinin HA15 (PHA)	1 µg/ml	Sigma Chemical Co.

HSP, heat shock protein; IL, interleukin.

characterized by chronic inflammation of synovial joints in childhood [8].

Patients and method**Patient details and sample collection**

Forty-six samples were obtained from 39 patients who fulfilled the proposed criteria for classification of JIA [8] (Table 1). Paired peripheral blood and synovial fluid samples were collected after informed consent, prior to administration of intra-articular triamcinolone hexacetonide. In three patients samples were obtained on more than one occasion during the course of the study. All patients were taking nonsteroidal anti-inflammatory drugs and 13 were taking methotrexate. Twelve patients had never previously received intra-articular triamcinolone hexacetonide or other corticosteroids. Synovial fluid samples were treated with hyaluronidase. The samples

were separated by Ficoll-Paque density centrifugation (Amersham Pharmacia Biotech, Uppsala, Sweden) [3].

Proliferation assays

Fresh PBMCs and SFMCs were cultured at a concentration of 2×10^5 cells per well in 96-well plates (Nunc, Roskilde, Denmark) for 6 days with a panel of antigens and mitogens in triplicate wells (Table 2). Optimal antigen concentrations were previously determined by titration. Antigens were chosen for inclusion in the panel if they had previously been linked to JIA (enteric bacteria *Yersinia* and *Salmonella* spp., human and *Escherichia coli* heat shock proteins [HSPs]) or if they represented common immunization or recall antigens (tetanus toxoid and streptolysin O). The proliferative responses were assessed after adding 0.15 µCi ³H thymidine (Amersham International, Little Chalfont, Buckinghamshire, UK) per

well for the last 18 hours, and counting incorporated ^3H in a β scintillation counter (1260 Multigamma II Gamma counter; Wallac LKB, Turku, Finland).

Cell staining and flow cytometric analysis

Cell staining was carried out using a standard protocol [2]. Antibodies were purchased from Becton Dickinson (Oxford, UK: CD3PE, CD4Bio, CD8Bio, $\alpha\beta$ FITC, $\gamma\delta$ FITC), Dako Ltd (High Wycombe, Buckinghamshire, UK: CD45RO PE, $\alpha\beta$ 7 FITC, isotype controls), Southern Biotechnology Associates Inc. (Birmingham, AL, USA: goat antimouse IgG FITC), R & D Systems (Minneapolis, MN, USA: CXCR3) and Life Technologies Ltd (Carlsbad, CA, USA). The α 4 β 7 was a gift from Dr Walter Newman (Leukosite, Cambridge, MA, USA). The data were analyzed using WinMDI version 2.5 (trotter@scripps.edu).

Determination of the acute phase response

Erythrocyte sedimentation rate (ESR; normal <20 mm/hour) and C-reactive protein (CRP; normal <5 mg/l) were determined using the Westergren and fixed point immuno-rate (Vitros CRP slide, Ortho-Clinical Diagnostics Inc., Rochester, NY, USA) techniques, respectively.

Statistical analyses

Mann–Whitney and Rank Spearman's analyses were used to assess the relationship between nonpaired data. Wilcoxon tests were used to assess the relationship between paired data.

Results

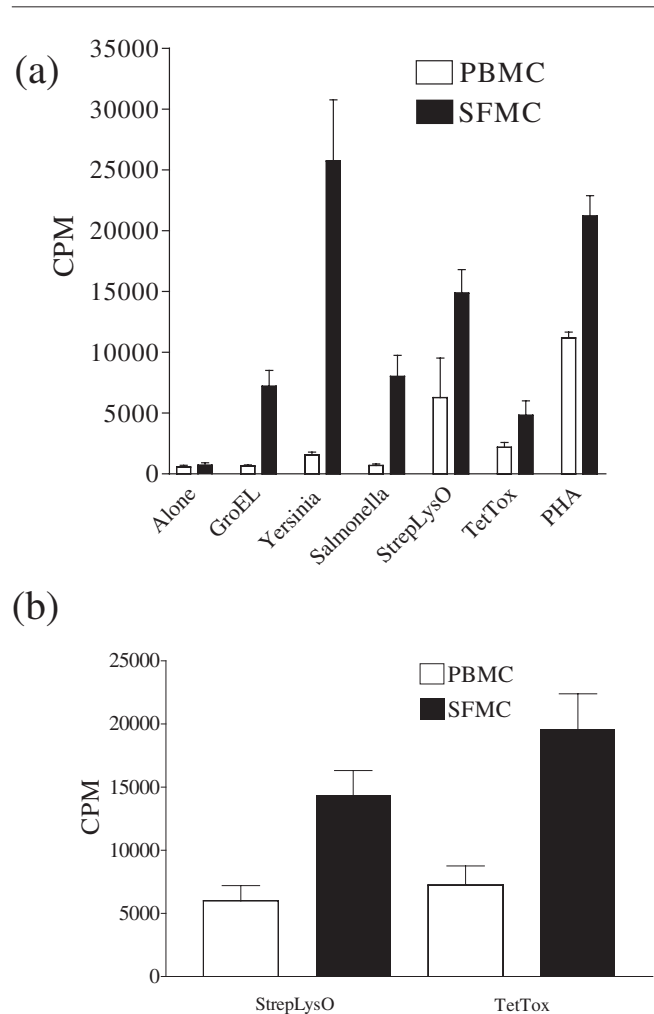
Antigen induced proliferation

Proliferative responses to bacterial lysates, GroEL and human HSP were always more vigorous in SFMCs than in PBMCs. In contrast, proliferative responses to streptolysin O and tetanus toxoid were often higher in the PBMCs than in the SFMCs. We defined two distinct patterns of proliferation according to the pattern of response to these antigens (Figs 1 and 2). T cell proliferative responses were judged to be different between the synovial fluid and peripheral blood compartments if the standard deviation of the mean value of proliferation to at least one antigen in the synovial fluid compartment did not overlap with the standard deviation of the mean value of proliferation to the same antigen in the peripheral blood compartment. A total of 10 samples (22% of total samples) from 10 patients did not fit into either of these two patterns. In these patients, proliferative responses to both streptolysin O and tetanus toxoid were equivalent in PBMCs and SFMCs.

Diverse pattern of proliferation

Patients with a diverse pattern of response had more vigorous SFMC proliferation than PBMC proliferation to all antigens tested. Seventeen samples (37% of total samples) from 14 patients displayed this pattern of response (Fig. 1).

Figure 1

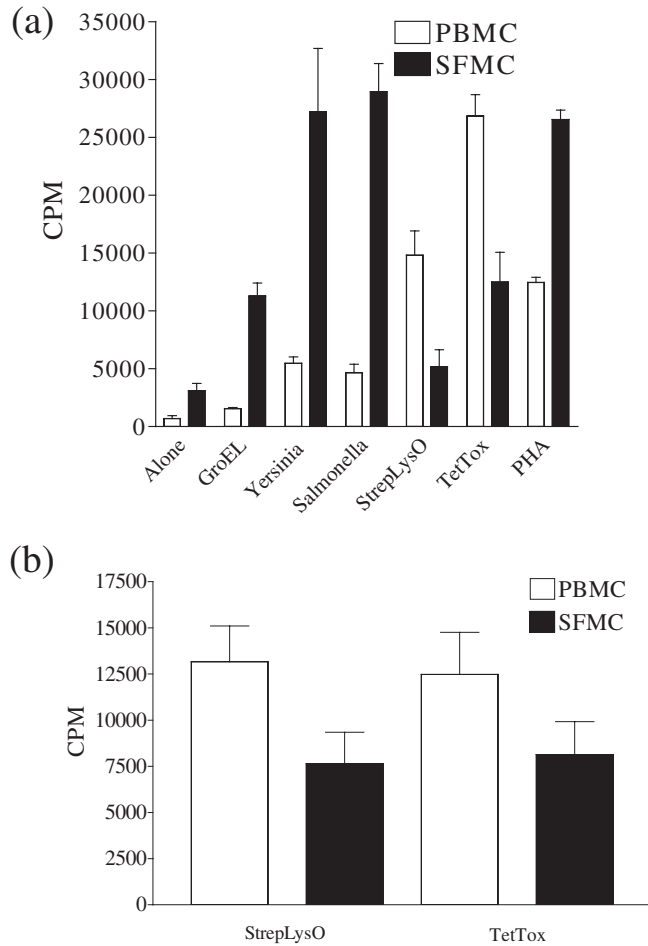


(a) Example of diverse pattern of response to antigens. Bars indicate mean proliferation and standard deviations of triplicate values. T cell proliferative responses were judged to be different between the synovial fluid and peripheral blood compartments if the standard deviations of the mean value of proliferation to an antigen in the synovial fluid compartment did not overlap with the standard deviations of the mean value of proliferation to the same antigen in the peripheral blood compartment. (b) The proliferative responses to SLO and TT observed in the patients in the diverse group ($n=17$). Responses in the peripheral blood differed significantly to those in the synovial fluid (SLO, $P=0.0002$; TT, $P=0.0002$). CPM, counts per minute; PBMC, peripheral blood mononuclear cells; SFMC, synovial fluid mononuclear cells.

Restricted pattern of proliferation

In patients with a restricted pattern of response, streptolysin O, tetanus toxoid or both antigens induced more vigorous proliferation in PBMCs than in SFMCs. High responses in the SFMCs were restricted to bacterial lysates, GroEL and human HSP. Nineteen samples (41% of total samples) from 15 patients displayed this pattern of response (Fig. 2).

Figure 2



(a) Example of restricted pattern of response to antigens. Bars indicate mean proliferation and standard deviations of triplicate values. (b) The proliferative responses to SLO and TT observed in the patients in the restricted group ($n=19$). Responses in the peripheral blood differed significantly to those in the synovial fluid (SLO, $P=0.0057$; TT, $P=0.048$). CPM, counts per minute; PBMC, peripheral blood mononuclear cells; SFMC, synovial fluid mononuclear cells.

Patterns of proliferation and correlation with clinical parameters and disease type

Associations between the patterns of proliferation and clinical parameters are shown in Table 3. The ESR and CRP values were significantly higher in the diverse group than in the restricted group (Fig. 3), whereas measures of the acute phase response in the patients who did not clearly fit into either group were intermediate (median ESR 18 mm/hour [range 9–130 mm/hour], median CRP 5.5 mg/l [range 5–138 mg/l]).

Patterns of proliferation over time

Samples were obtained from three patients on more than one occasion. The pattern of proliferation varied in striking correlation with changes in the acute phase response

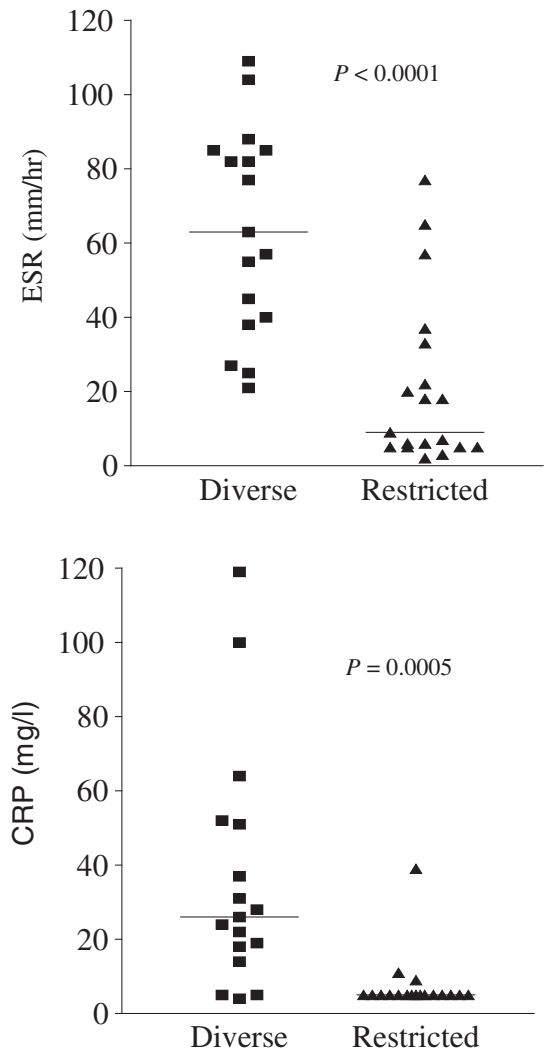
Table 3

Clinical parameters of patients with diverse and restricted patterns of *in vitro* response to antigen

SF T cells	Diverse	Restricted
Duration (months)	42 (1–96)	59 (5–175)
Age (years)	12.5 (5–17)	10.5 (5–16)
No. of joints	5 (2–19)	2 (1–20)**
ESR (mm/hour)	63 (21–109)	9 (2–77)***
CRP (mg/l)	26 (4–119)	5 (5–39)***

Data shows median values. * $P<0.05$, ** $P<0.01$, *** $P<0.001$. CRP, C-reactive protein; ESR, erythrocyte sedimentation rate; SF, synovial fluid.

Figure 3



Association of proliferation pattern with acute phase response. CRP, C-reactive protein; ESR, erythrocyte sedimentation rate.

Table 4**Patterns of proliferation over time**

Patient	Disease duration (months)	ESR (mm/hour)	CRP (mg/l)	Pattern of proliferation
A	42	5	5	Restricted
	55	55	19	Diverse
B	24	45	14	Diverse
	48	30	6	Neither diverse nor restricted
	56	-	24	Diverse
C	10	12	53	Neither diverse nor restricted
	14	2	5	Restricted

CRP, C-reactive protein; ESR, erythrocyte sedimentation rate.

(Table 4). Thus, patient A exhibited a restricted pattern when the acute phase was low and a diverse pattern when the acute phase was high. Patient B exhibited a diverse pattern when the acute phase was high and this was lost when the acute phase was low. Similarly, patient C exhibited a restricted response only when the acute phase was low.

Expression of $\alpha E\beta 7$ and $\alpha 4\beta 7$ integrins on peripheral blood and synovial fluid T cells

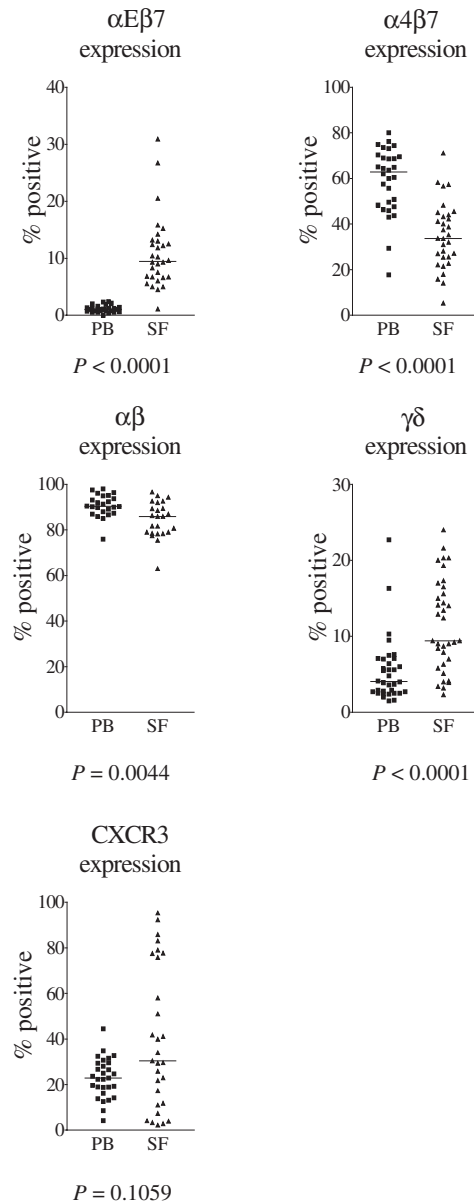
$\alpha E\beta 7$ expression was significantly higher on the synovial fluid T cells than peripheral blood T cells (Fig. 4). Of $\alpha E\beta 7$ expressing synovial fluid T cells, 92% were $\alpha\beta$ TCR positive (three samples) and 94.8% expressed CD45RO (five samples). The expression of $\alpha 4\beta 7$ was significantly lower on synovial fluid T cells than on peripheral blood T cells (Fig. 4). The $\alpha 4\beta 7$ integrin was expressed on both naïve and memory phenotype T cells. In three samples, 49% of peripheral blood CD45RO T cells and 23% of synovial fluid CD45RO T cells expressed $\alpha 4\beta 7$. A higher percentage of synovial fluid CD8⁺ T cells than of CD4⁺ T cells expressed $\alpha E\beta 7$ (CD8⁺ 18.7%, CD4⁺ 2.6%; $P < 0.0001$) and $\alpha 4\beta 7$ (CD8⁺ 47.0%, CD4⁺ 21.7%; $P < 0.0001$).

Expression of CXCR3 on peripheral blood and synovial fluid T cells

Expression of the proinflammatory chemokine receptor CXCR3 was variable on synovial fluid and peripheral blood T cells (Figs 4 and 5). CXCR3 expression was significantly increased on synovial fluid CD4⁺ T cells as compared with peripheral blood CD4⁺ T cells ($P = 0.006$).

Expression of $\alpha\beta$ and $\gamma\delta$ T cell receptors on peripheral blood and synovial fluid T cells

The majority of T cells in both compartments expressed $\alpha\beta$ TCR (Fig. 4). However, a higher percentage of synovial fluid T cells expressed $\gamma\delta$ TCR (Fig. 4). A higher percentage of synovial fluid CD8⁺ T cells than of CD4⁺ T cells expressed the $\gamma\delta$ TCR (CD8⁺ 7.4%, CD4⁺ 1.5%; $P < 0.0001$).

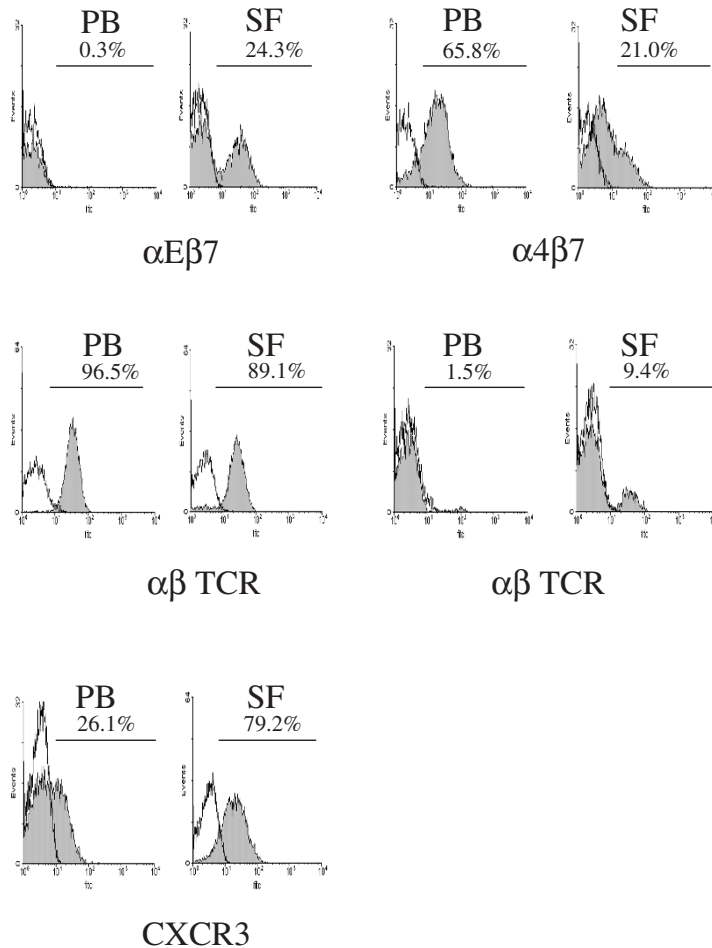
Figure 4

Total integrin, TCR and CXCR3 expression on peripheral blood (PB) and synovial fluid (SF) T cells.

Correlation of T cell phenotype with pattern of T cell proliferation

The percentage of T cells expressing the $\gamma\delta$ TCR was higher in the restricted group than in the diverse group (14.1% and 8.4%, respectively; $P < 0.05$), but no differences were observed for the expression of either $\alpha E\beta 7$ or $\alpha 4\beta 7$. There was a trend toward greater expression of CXCR3 on synovial fluid T cells from the restricted group but this did not reach statistical significance.

Figure 5



Integrin, TCR and CXCR3 expression on peripheral blood (PB) and synovial fluid (SF) T cells. Histograms represent paired samples from one patient with restricted response.

Discussion

The majority of synovial fluid T cells from patients with JIA are of the memory phenotype [2]. Memory T cells have an increased capacity to bind to inflamed endothelium because of increased expression of adhesion molecules and chemokine receptors [9].

Previous studies of patients with JIA and reactive arthritis demonstrated that antigen-induced T cell proliferative responses were usually more vigorous in the synovial fluid than in peripheral blood, suggesting nonspecific recruitment of memory T cells into the inflamed joint [7,10–12]. In contrast, we found two distinct patterns of T cell antigen responsiveness: diverse and restricted proliferation. Proliferation to all of the antigens was more vigorous in the SFMCs than in the PBMCs in the group of patients who exhibited a diverse response. This pattern of response would be expected if the synovial fluid memory T cells were recruited to the inflamed joint as a consequence of

their memory phenotype rather than specific antigens. The group of patients with a restricted response, however, demonstrated less vigorous proliferative responses to TT and/or SLO in the synovial fluid compartment than in the peripheral blood. This pattern of response suggests that, in some patients, memory T cells specific for TT or SLO preferentially remain within the peripheral blood compartment (i.e. synovial fluid T cells may not be recruited to the inflamed joint as a consequence of their memory phenotype alone).

We observed a striking association between the pattern of proliferation and the acute phase response; those patients with a high acute phase response exhibited a diverse pattern, whereas those with little or no acute phase response tended to show a restricted pattern of responses to the antigen panel. This was supported by studies of serial synovial fluid and peripheral blood samples from three patients, in whom a high acute phase

response was associated with a diverse pattern that reverted to a restricted pattern when the acute phase proteins normalized.

Possible explanations for this association may lie in the direct actions of the acute phase proteins themselves, or indirectly via factors that govern the acute phase response. CRP has chemotactic properties for leucocytes [13] and T cells may bind directly to CRP, resulting in inhibition of T cell function [14,15]. Although CRP does not accumulate at high concentrations within inflamed tissues [16], it is possible that circulating CRP or other acute phase proteins exert a direct action on T cells in the peripheral blood. Acute phase proteins may influence the expression of adhesion molecules on joint endothelium, and T cells and chemokine expression within the joint. Serum amyloid A may accumulate in inflamed tissues where it can act as a chemoattractant for neutrophils, monocytes and lymphocytes, and it is possible that the accumulation of activated CD14⁺ monocytes may contribute to the different proliferative patterns seen [17–19]. Also, JIA patients with systemic disease have increased chemokine expression in the synovial fluid [20]. Tumour necrosis factor- α , which correlates with acute phase protein levels in patients with JIA [21], has been shown to upregulate adhesion molecules on endothelial cells [22] as well as enhancing chemokine induced recruitment of memory T cells into inflammatory sites [23].

It is interesting that the antigens that induced vigorous SFMC proliferation in patients exhibiting a 'restricted pattern' were those associated with Gram-negative enteric bacteria. T cells from the gut have enhanced capacity to bind to synovial endothelial cells, possibly because of shared characteristics of adhesion molecules at the two sites [24–26]. It is conceivable that, in 'restricted pattern' patients, T cells that have been through the gut or its mucosal associated lymphoid tissue, and exposed to enteric antigens, are preferentially able to bind to the synovial endothelium and are therefore selectively recruited to the synovial compartment. In 'diverse pattern' patients, however, high levels of proinflammatory cytokines, such as tumour necrosis factor- α , may upregulate chemokine-induced recruitment of all memory T cells to the synovial compartment. In this situation, vigorous immune responses may be observed to all tested antigens, and the relative specificity of proliferative responses to enteric bacteria by gut-associated T cells may be obscured.

An increased percentage of JIA synovial fluid T cells expressed the mucosal integrin α E β 7 and the γ δ TCRs, implying that mucosal T cells have a propensity to migrate to the inflamed joint. Mucosal memory T cells express α 4 β 7, which facilitates homing to the gut [27]. Once within the mucosal site, α 4 β 7 is downregulated and α E β 7 is upregulated, which may assist in T cell retention within

the mucosal site [28,29]. The results of our studies support a similar process of 'integrin switching' in the joint.

Our findings are in agreement with the observation that CXCR3, a cell surface receptor for the proinflammatory chemokines inducible protein (IP)-10 and monokine induced by interferon- γ (Mig), is expressed on JIA synovial fluid T cells [30,31]. It is possible that CXCR3 expression favours synovial T cell accumulation in the absence of an acute phase response.

Conclusion

We propose the following model. Proinflammatory cytokines that induce a high acute phase response also favour the recruitment of a diverse memory T cell repertoire to the joint, independent of the antigen specificity of the memory T cells. However, when there is little systemic inflammation (low acute phase response), only those T cells with an intrinsic ability to bind to synovial endothelium, such as mucosal T cells, migrate into the synovial compartment.

Competing interests

None declared.

Acknowledgements

We thank Dr Walter Newman (Leukosite, USA, now Millennium Pharmaceuticals, www.millennium.com) for the kind gift of the Act-1 antibody. We are grateful to Professor Mike Salmon and Professor Chris Buckley for critical reading of the manuscript. We acknowledge the financial support of the Henry Smith's Charity and the Arthritis Research Campaign.

References

1. Matthews N, Emery P, Pilling D, Akbar A, Salmon M: **Subpopulations of primed T helper cells in rheumatoid arthritis.** *Arthritis Rheum* 1993, **36**:603-607.
2. Black AP, Bhayani H, Ryder CAJ, Gardner-Medwin JMM, Southwood TR: **T-cell activation without proliferation in juvenile idiopathic arthritis.** *Arthritis Res* 2002, **4**:177-183.
3. Silverman ED, Isacovics B, Petsche D, Laxer RM: **Synovial fluid cells in juvenile arthritis: evidence of selective T cell migration to inflamed tissue.** *Clin Exp Immunol* 1993, **91**:90-95.
4. Pitzalis C, Kingsley G, Haskard D, Panayi G: **The preferential accumulation of helper-inducer T lymphocytes in inflammatory lesions: evidence for regulation by selective endothelial and homotypic adhesion.** *Eur J Immunol* 1988, **18**:1397-1404.
5. Borthwick NJ, Akbar AN, Maccormac LP, Lowdell M, Craigen JL, Hassan I, Grundy JE: **Selective migration of highly differentiated primed T cells, defined by low expression of CD45RB, across human umbilical vein endothelial cells: effects of viral infection on transmigration.** *Immunology* 1997, **90**:272-280.
6. Ford DK, Da Roza DM, Schulzer M: **Lymphocytes from the site of disease but not blood lymphocytes indicate the cause of arthritis.** *Ann Rheum Dis* 1985, **44**:701-710.
7. Sieper J, Braun J, Wu P, Kingsley G: **T cells are responsible for the enhanced synovial cellular immune response to triggering antigen in reactive arthritis.** *Clin Exp Immunol* 1993, **91**:96-102.
8. Petty RE, Southwood TR, Baum J, Bhetty E, Glass DN, Manners P, Maldonado-Cocco J, Suarez-Almazor M, Orozco-Alcala J, Prieur A-M: **Revision of the proposed classification criteria for juvenile idiopathic arthritis: Durban, 1997.** *J Rheumatol* 1998, **25**:1991-1994.
9. Butcher EC, Picker LJ: **Lymphocyte homing and homeostasis.** *Science* 1996, **272**:60-66.
10. Sieper J, Braun J, Doring E, Wu P, Heesemann J, Treharne J, Kingsley G: **Aetiological role of bacteria associated with reac-**

- tive arthritis in pauciarticular juvenile chronic arthritis. *Ann Rheum Dis* 1992, **51**:1208-1214.
11. Life P, Hasell A, Williams K, Young S, Bacon P, Southwood T, Gaston JSH: Responses to gram negative enteric bacterial antigens. Synovial T cells from patients with juvenile chronic arthritis: recognition of Heat Shock Protein HSP 60. *J Rheumatol* 1993, **20**:1388-1396.
 12. Southwood TR, Gaston JSH: Evolution of synovial fluid mononuclear cell responses in a HLA B27-positive patient with *Yersinia*-associated juvenile arthritis. *Br J Rheumatol* 1993, **32**:845-848.
 13. Schultz DR, Arnold PI: Properties of four acute phase proteins: C-reactive protein, serum amyloid A protein, α 1-acid glycoprotein, and fibrinogen. *Semin Arthritis Rheum* 1990, **20**:129-147.
 14. Mortensen RF, Osmand AP, Gewurz H: Effects of C-reactive protein on the lymphoid system. *J Exp Med* 1975, **141**:821-839.
 15. Whisler RL, Newhouse YG, Mortensen RF: C-reactive protein reduces the promotion of human B-cell colony formation by autoreactive T4 cells and T-cell proliferation during the autologous mixed-lymphocyte reaction. *Cell Immunol* 1986, **102**:287-298.
 16. Vigushin DM, Pepys MB, Hawkins PN: Metabolic and scintigraphic studies of radioiodinated human C-reactive protein in health and disease. *J Clin Invest* 1993, **90**:1351-1357.
 17. Badolato R, Ming Wang J, Murphy WJ, Lloyd AR, Michiel DF, Bauserman LL, Kelvin DJ, Oppenheim JJ: Serum amyloid A is a chemoattractant: induction of migration, adhesion, and tissue infiltration of monocytes and polymorphonuclear leukocytes. *J Exp Med* 1994, **180**:203-209.
 18. Badolato R, Oppenheim J: Role of cytokines, acute-phase proteins, and chemokines in the progression of rheumatoid arthritis. *Semin Arthritis Rheum* 1996, **26**:526-538.
 19. Gabay C, Kushner I: Acute-phase proteins and other systemic responses to inflammation. *N Engl J Med* 1999, **340**:448-454.
 20. De Benedetti F, Pignatti P, Bernasconi S, Gerloni V, Matsushima K, Caporali R, Montecucco CM, Sozzani S, Fantini F, Martini A: Interleukin 8 and monocyte chemoattractant protein-1 in patients with juvenile rheumatoid arthritis. Relation to onset types, disease activity, and synovial fluid leukocytes. *J Rheumatol* 1998, **26**:425-431.
 21. Lepore L, Pennesi M, Saletta S, Peticari S, Presani G and Prodan M: Study of IL-2, IL-6, TNF-alpha, IFN-gamma and IFN-beta in the serum and synovial-fluid of patients with juvenile chronic arthritis. *Clin Exp Rheum* 1994, **12**:561-565.
 22. Patel KD: Mechanisms of selective leukocyte recruitment from whole blood on cytokine-activated endothelial cells under flow conditions. *J Immunol* 1999, **162**:6209-6216.
 23. Ding Z, Xiong K, Issekutz TB: Regulation of chemokine-induced transendothelial migration of T lymphocytes by endothelial activation: differential effects on naive and memory T cells. *J Leukoc Biol* 2000, **67**:825-833.
 24. Salmi M, Andrew DP, Butcher EC, Jalkanen S: Dual binding capacity of mucosal immunoblasts to mucosal and synovial endothelium in humans: dissection of the molecular mechanisms. *J Exp Med* 1995, **181**:137-149.
 25. Salmi M, Rajala P, Sirpa J: Homing of mucosal leukocytes to joints. *J Clin Invest* 1997, **99**:2165-2172.
 26. Soderstrom K, Bucht A, Halapi E, Lundqvist C, Gronberg A, Nilsson E, Orsini DLM, van de Wal Y, Konig F, Hammarstrom ML, Kiessling R: High expression of $V\gamma 8$ is a shared feature of human $\gamma\delta$ T cells in the epithelium of the gut and in the inflamed synovial tissue. *J Immunol* 1994, **152**:6017-6027.
 27. Scweighoffer T, Tanaka Y, Tidswell M, Erle DJ, Horgan KJ, Ginther Luce GE, Lasarovits AI, Buck D, Shaw S: Selective expression of integrin $\alpha 4\beta 7$ on a subset of human $CD4^+$ T cells with hallmarks of gut-trophism. *J Immunol* 1993, **151**:717-729.
 28. Farstad IN, Halstensen TS, Lien B, Kilshaw PJ, Lazarovitz AI, Brandtzaeg P: Distribution of $\beta 7$ integrins in human intestinal mucosa and organized gut-associated lymphoid tissue. *Immunology* 1996, **89**:227-237.
 29. Kilshaw PJ, Murrant SJ: Expression and regulation of $\beta 7$ (βp) integrins on mouse lymphocytes: relevance to the mucosal immune system. *Eur J Immunol* 1991, **21**:2591-2597.
 30. Bonecchi R, Bianchi G, Bordignon PP, D'Ambrosio D, Lang R, Borsatti A, Sozzani S, Allavena P, Gray PA, Matovani A, Sinigaglia F: Differential expression of chemokine receptors and chemotactic responsiveness of type 1 T helper cells (Th1s) and Th2s. *J Exp Med* 1998, **187**:129-134.
 31. Wedderburn LR, Robinson N, Patel A, Varsani H, Woo P: Selective recruitment of polarized T cells expressing CCR5 and CXCR3 to the inflamed joints of children with juvenile idiopathic arthritis. *Arthritis Rheum* 2000, **43**:765-774.

Correspondence

Professor TR Southwood, Institute of Child Health, Whittall Street, Birmingham, B4 6NH, UK. E-mail: t.r.southwood@bham.ac.uk