

RESEARCH

Open Access

# Heterogeneous expression pattern of interleukin 17A (IL-17A), IL-17F and their receptors in synovium of rheumatoid arthritis, psoriatic arthritis and osteoarthritis: possible explanation for nonresponse to anti-IL-17 therapy?

Lisa GM van Baarsen<sup>1,2\*†</sup>, Maria C Lebre<sup>1,2†</sup>, Dennis van der Coelen<sup>1,2</sup>, Saïda Aarrass<sup>1,2</sup>, Man W Tang<sup>1</sup>, Tamara H Ramwadhoebe<sup>1,2</sup>, Daniëlle M Gerlag<sup>1,3</sup> and Paul P Tak<sup>1,3</sup>

## Abstract

**Introduction:** Accumulating evidence suggests an important role for interleukin 17 (IL-17) in the pathogenesis of several inflammatory diseases, including rheumatoid arthritis (RA) and psoriatic arthritis (PsA). Accordingly, clinical trials aimed at blocking IL-17 have been initiated, but clinical results between patients and across different diseases have been highly variable. The objective was to determine the variability in expression of IL-17A, IL-17F and their receptors IL-17RA and IL-17RC in the synovia of patients with arthritis.

**Methods:** Synovial biopsies were obtained from patients with RA ( $n = 11$ ), PsA ( $n = 15$ ) and inflammatory osteoarthritis (OA,  $n = 14$ ). For comparison, synovia from noninflamed knee joints ( $n = 7$ ) obtained from controls were included. Frozen sections were stained for IL-17A, IL-17F, IL-17RA and IL-17RC and evaluated by digital image analysis. We used confocal microscopy to determine which cells in the synovium express IL-17A and IL-17F, double-staining with CD4, CD8, CD15, CD68, CD163, CD31, von Willebrand factor, peripheral lymph node addressin, lymphatic vessel endothelial hyaluronan receptor 1, mast cell tryptase and retinoic acid receptor-related orphan receptor  $\gamma$  (ROR $\gamma$ ).

**Results:** IL-17A, IL-17F, IL-17RA and IL-17RC were abundantly expressed in synovial tissues of all patient groups. Whereas IL-17RA was present mostly in the synovial sublining, IL-17RC was abundantly expressed in the intimal lining layer. Digital image analysis showed a significant ( $P < 0.05$ ) increase of only IL-17A in arthritis patients compared to noninflamed control tissues. The expression of IL-17A, IL-17F and their receptors was similar in the different patient groups, but highly variable between individual patients. CD4+ and CD8+ cells coexpressed IL-17A, and few cells coexpressed IL-17F. IL-17A and IL-17F were not expressed by CD15+ neutrophils. Mast cells were only occasionally positive for IL-17A or IL-17F. Interestingly, IL-17A and IL-17F staining was also observed in macrophages, as well as in blood vessels and lymphatics. This staining probably reflects receptor-bound cytokine staining. Many infiltrated cells were positive for the transcription factor ROR $\gamma$ . Colocalisation between ROR $\gamma$  and IL-17A and IL-17F indicates local IL-17 production.

(Continued on next page)

\* Correspondence: e.g.vanbaarsen@amc.uva.nl

†Equal contributors

<sup>1</sup>Division of Clinical Immunology and Rheumatology, Academic Medical Centre, University of Amsterdam, Meibergdreef 9, 1105, AZ, Amsterdam, the Netherlands

<sup>2</sup>Department of Experimental Immunology, Academic Medical Centre, University of Amsterdam, Meibergdreef 9, 1105 AZ, Amsterdam, The Netherlands

Full list of author information is available at the end of the article

(Continued from previous page)

**Conclusions:** Increased expression of IL-17A is not restricted to synovial tissues of RA and PsA patients; it is also observed in inflammatory OA. The heterogeneous expression levels may explain nonresponse to anti-IL-17 therapy in subsets of patients.

## Introduction

Whereas initial studies focused mainly on type 1 helper T (Th1) cells as having a prominent role in rheumatoid arthritis (RA), subsequent studies suggested that Th17 cells also have an important role in this disease. The functional role of this new type of effector helper T cell has been studied extensively in recent years and shows that it has important functions in the response to microbial infection and in promoting and maintaining chronic inflammation and autoimmunity [1]. Interestingly, recent studies have demonstrated the plasticity of Th17 cells and have indicated their pathogenic role, especially when shifted towards Th1 cells [2-4].

Th17 cells were originally identified by their expression of the proinflammatory cytokine interleukin 17 (IL-17) and represent a distinct subset of CD4+ cells characterised by the expression of Retinoic acid receptor-related orphan receptor  $\gamma$  (ROR $\gamma$ ) [5]. The production of IL-17 is specifically regulated by this transcription factor. The cytokine IL-17 is formally referred to as IL-17A and is part of a larger IL-17 cytokine family consisting of six members ranging from IL-17A to IL-17F. The most studied family members are IL-17A and IL-17E, which are mainly produced by Th17 cells to protect against extracellular pathogens and fungi but also have proinflammatory properties. IL-17 promotes the transcriptional activation of proinflammatory cytokines, hematopoietic cytokines, acute-phase response genes and antimicrobial mediators [6], especially in synergy with other proinflammatory cytokines such as tumour necrosis factor and IL-1 $\beta$  [7,8]. The common receptor for the IL-17 Family members is IL-17RA [9]. In addition to IL-17RA, IL-17RC is required for signalling in response to IL-17A or IL-17F [10,11].

Levels of IL-17 have been found to be increased in the synovial fluid and tissues of RA patients [12-14]. Furthermore, studies in several experimental animal models demonstrated a detrimental role of IL-17 in arthritis [15-17]. IL-17<sup>-/-</sup> mice are resistant to collagen-induced arthritis [18]. Therefore, it has been suggested that IL-17 may play a crucial role in the pathogenesis of different forms of arthritis by inducing synovial inflammation and promoting bone destruction [19,20]. Accordingly, several clinical trials targeting the IL-17 pathway in RA [21], psoriasis [22,23], psoriatic arthritis (PsA) [24] and ankylosing spondylitis [25] have been initiated (reviewed in [26]). Although psoriasis patients show marked clinical benefit of targeting IL-17A, the clinical response in RA and PsA has

been limited and variable between patients [27]. Conceivably, inhibiting IL-17 is only beneficial for those arthritis patients with increased cytokine levels in the target tissue. To provide more insight into the heterogeneity of the expression of IL-17 and IL-17 receptors at the site of inflammation, we investigated the expression of IL-17A, IL-17F and their receptors at the protein level in synovial tissues from inflammatory arthritis patients.

## Methods

### Patients and synovial tissue collection

We included biological naïve patients with RA (according to the American College of Rheumatology (ACR) 1987 criteria [28],  $n = 11$ ), PsA (Caspar criteria [29],  $n = 15$ ) and inflammatory osteoarthritis (OA; according to the 1986 ACR criteria for OA [30],  $n = 14$ ). For research purposes all patients underwent miniarthroscopic synovial biopsy sampling of an actively inflamed ankle or knee joint [31]. Six to eight samples were collected for immunohistochemistry (IHC) to correct for sampling error, as described previously [32]. For comparison non-inflammatory controls ( $n = 7$ ) were included, patients who underwent orthopaedic arthroscopy for non-inflammatory joint pain. Table 1 shows the demographic and clinical features. The study was approved by the Institutional Review Board of the Academic Medical Centre and performed according to the Declaration of Helsinki. All study patients provided written informed consent.

To ensure preservation of antigenic content [31,32], synovial biopsy samples were snap-frozen *en bloc* in Tissue-Tek O.C.T. compound (Sakura Finetek Europe, Zoeterwoude, the Netherlands) immediately after collection and stored in liquid nitrogen. Synovial tissue biopsies were cut into 5- $\mu$ m sections and mounted on StarFrost adhesive glass slides (Knittelgläser, Braunschweig, Germany), after which slides were sealed in parafilm (Bemis, Neenah, WI, USA) and stored at  $-80^{\circ}\text{C}$  until further use.

### Antibodies

To investigate the detailed expression pattern of IL-17 in synovium, tissue sections were stained using mouse monoclonal antibodies against IL-17A (immunoglobulin G1 (IgG1), clone 41802), IL-17F (IgG2a, clone 197315) and their receptors IL-17RA (IgG1, clone 133617) and IL-17RC (IgG2b, clone 309882), all from R&D Systems (Minneapolis, MN, USA). For colocalisation studies, we used antibodies against the transcription factor ROR $\gamma$

**Table 1 Demographic and clinical features<sup>a</sup>**

	Controls (n = 7)	RA (n = 11)	PsA (n = 15)	OA (n = 14)
Age, yr	47 (40 to 60)	49 (45 to 62)	48 (34 to 56)	68 (54 to 77)
Females, n (%)	2 (29)	7 (64)	7 (47)	10 (71)
Disease duration, mo	NA	18 (8 to 88)	41 (23 to 84) <sup>b</sup>	42 (13 to 72) <sup>c</sup>
Erosive disease, n (%)	NA	3/8 (38)	ND	ND
RF-positive, n/total (%)	NA	3/11 (27)	ND	ND
ACPA-positive, n (%)	NA	4/7 (57)	ND	ND
VAS GDA	NA	57 (55 to 85)	67 (54 to 75)	ND
TJC28, n	NA	9 (7 to 13)	2 (1 to 12)	ND
SJC28	NA	11 (6 to 14)	2 (1 to 12)	ND
ESR, mm/h	NA	23 (16 to 47)	34 (8 to 56)	ND
CRP, mg/L	NA	24.3 (12.0 to 37.0)	11.0 (4.7 to 18.0)	ND
DAS28	NA	5.46 (5.33 to 6.62)	4.67 (2.83 to 5.99)	ND
NSAID use, n (%)	NA	7 (64)	6 (40)	6 (67) <sup>d</sup>
MTX use, n (%)	NA	6 (55)	10 (67)	0 (0)

<sup>a</sup>ACPA, Anticitrullinated protein antibodies; CRP, C-reactive protein; DAS28, Disease Activity Score in 28 joints; ESR, Erythrocyte sedimentation rate; MTX, Methotrexate; NA, Not applicable; ND, Not determined; NSAID, Nonsteroidal anti-inflammatory drug; OA, Osteoarthritis; PsA, Psoriatic arthritis; RA, Rheumatoid arthritis; RF, Rheumatoid factor; SJC28, Swollen joint count of 28 joints; TJC28, Tender joint count of 28 joints; VAS GDA, Visual analogue scale (range from 0 to 100 mm) global disease activity.

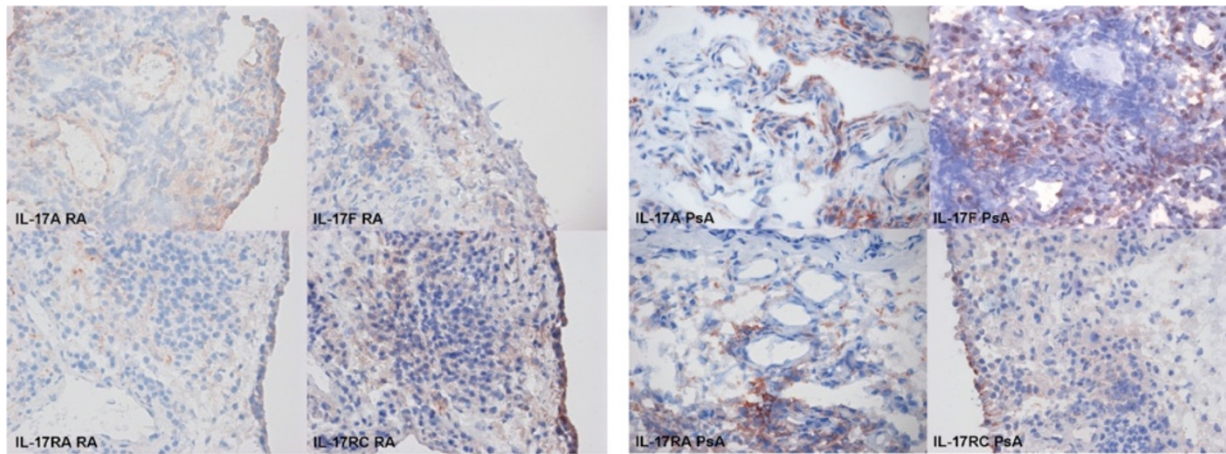
<sup>b</sup>n = 1, <sup>c</sup>n = 6, <sup>d</sup>n = 5 with no data available. Data are presented as median (interquartile range).

(RORc, mouse IgG2a; RayBiotech, Norcross, GA, USA), T cells (biotin-conjugated mouse anti-CD4: IgG1, clone RPA-T4; Biolegend, San Diego, CA, USA; and biotin-conjugated mouse anti-CD8: IgG1, clone RFT8; SouthernBiotech, Birmingham, AL), B cells (biotin-conjugated mouse anti-CD19; IgG1, clone HIB19; Biolegend), macrophages (biotin-conjugated mouse anti-CD68; IgG2b clone Y1/82A; Biolegend; and biotin-conjugated mouse anti-CD163; IgG1 clone GHI/61; Biolegend), neutrophils (biotin-conjugated mouse anti-CD15; IgM clone HI98; eBioscience, San Diego, CA, USA), mast cells (mouse anti-mast cell tryptase (MCT); IgG1 clone AA1; Dako, Glostrup, Denmark), lymphatic vessels (goat polyclonal anti-lymphatic vessel endothelial hyaluronan receptor 1 (Lyve-1); R&D Systems), blood vessels (mouse anti-von Willebrand factor (vWF); IgG1 clone F8/86; Dako) and high endothelial venules (mouse anti-peripheral lymph node addressin (PNAd); IgM clone MECA-79; Biolegend). Because some cell-specific antibodies were of the same isotype as the IL-17A antibody, we used a rabbit polyclonal IL-17A antibody (Insight Biotechnology, Wembley, UK) to investigate colocalisation with MCT, CD31 and vWF. During this project, the anti-IL-17F antibody was removed from the market and replaced with another mouse monoclonal anti-IL-17F antibody (IgG2b clone 197301; R&D Systems). Colocalisation studies using both anti-IL-17F antibodies showed that the antibodies almost completely overlap.

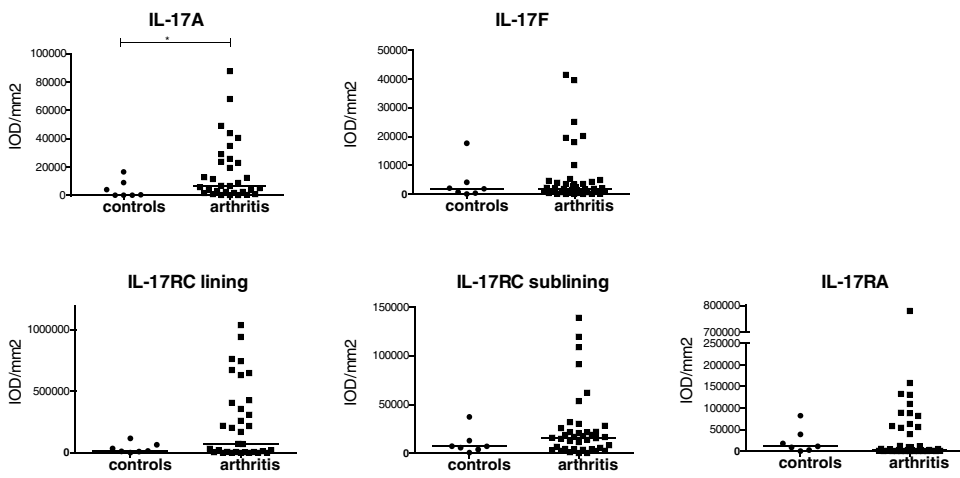
### Immunohistochemistry

IHC was performed using a two-step immunoperoxidase method followed by a biotin tyramide (PerkinElmer, Waltham, MA, USA) enhancement step to detect IL-17A, IL-17F and IL-17RA or followed by BrightVision (Immunologic, Duiven, the Netherlands) to detect IL-17RC. Sealed slides containing frozen sections were thawed at room temperature for 30 minutes, unpacked, and air-dried for another 20 minutes. Subsequently, sections were fixed in acetone, and endogenous peroxidase activity was blocked with 0.3% H<sub>2</sub>O<sub>2</sub> in 0.1% sodium azide in phosphate-buffered saline (PBS) for 20 minutes. After washing in PBS, primary antibodies were incubated overnight at 4°C. As negative controls, irrelevant isotype-matched immunoglobulins instead of the primary antibody were applied to the sections. The next day, staining was developed using a goat anti-mouse horseradish peroxidase (HRP)-conjugated antibody (Dako), after which the intensity was enhanced using biotinylated tyramide (PerkinElmer) and streptavidin-HRP (Dako). Enhancement of the IL-17RC staining was performed using BrightVision. 3-Amino-9-ethylcarbazole; Vector Laboratories, Burlingame, CA, USA) was used as chromogen. Slides were counterstained with Gill's haematoxylin (Klinipath, Duiven, the Netherlands) and mounted in Kaiser's glycerol gelatin (Merck, Darmstadt, Germany).

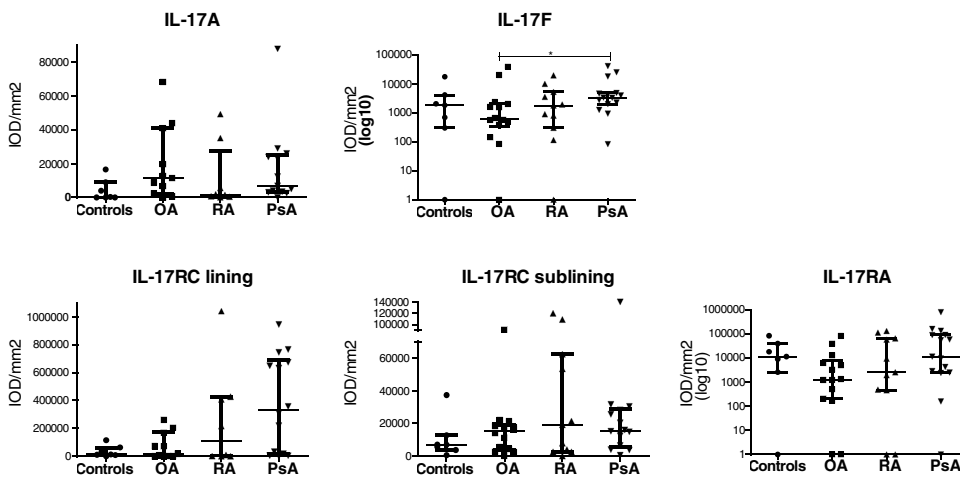
The intensity of staining was analysed by digital image analysis in a blinded fashion using a Syndia algorithm on a Qwin-based analysis system (Leica, Cambridge, UK) as described previously [33]. The expression of stained



**A**



**B**



**C**

**Figure 1** (See legend on next page.)

(See figure on previous page.)

**Figure 1 Expression of interleukins 17A and 17F and their receptors in synovial tissue.** The expression of interleukin 17A (IL-17A), IL-17F, IL-17RA and IL-17RC in rheumatoid arthritis (RA), osteoarthritis (OA), psoriatic arthritis (PsA) and noninflamed synovial tissue was determined by immunohistochemistry using monoclonal antibodies. For each marker, a representative microscopic picture is given in synovial tissue of a RA patient (left) and a PsA patient (right) (A). The intensity of staining was analysed using digital image analysis, and levels were compared between the noninflammatory and arthritis groups using a Mann-Whitney *U* test (B) and between OA, PsA and RA patients using a Kruskal-Wallis test with *post hoc* Dunn's multiple-comparisons tests (C). \* $P < 0.05$ . IOD, Integrated optical density.

proteins was calculated for each section as the median integrated optical density per square millimetre of tissue [34].

### Colocalisation using immunofluorescence

Colocalisation studies between IL-17 and cell-specific markers were performed using a sequential double-immunofluorescence staining method. Frozen tissue sections were thawed and air-dried at room temperature and subsequently fixed in acetone. After washing in PBS, primary antibody (anti-IL17A or anti-IL-17F) was applied and incubated overnight at 4°C. As a negative control, sections were incubated with isotype-matched immunoglobulins. After incubation, bound primary antibodies were detected using isotype-specific Alexa Fluor 594-conjugated or Alexa Fluor 488-conjugated antibodies (Molecular Probes Europe, Leiden, the Netherlands). Subsequently, sections were blocked with 10% normal mouse serum to prevent nonspecific binding. Cell-specific antibodies were applied and incubated for 1 hour at room temperature, after which the staining was developed using streptavidin-Alexa Fluor 594-, streptavidin-Alexa Fluor 633- or isotype-specific Alexa Fluor 594- or Alexa Fluor 488-conjugated antibodies (Molecular Probes Europe). After staining, the slides were mounted with VECTASHIELD HardSet containing 4',6-diamidino-2-phenylindole dihydrochloride (Vector Laboratories) for nuclear counterstaining. Colocalisation was visualised using a TCS SP2 spectral confocal and multiphoton system (Leica Microsystems, Wetzlar, Germany).

### Statistical analysis

GraphPad Prism software (V.5; GraphPad Software, La Jolla, CA, USA) and SPSS version 18.0.2 software (SPSS, Chicago, IL, USA) were used for statistical analysis. Nonnormally distributed data are presented as median (interquartile range). Differences between study groups were analysed using the Kruskal-Wallis test with *post hoc* Dunn's multiple comparisons test or the Mann Whitney *U* test where appropriate. Correlations were assessed with the Spearman's rank-order correlation coefficients. *P*-values below 0.05 were considered statistically significant.

## Results

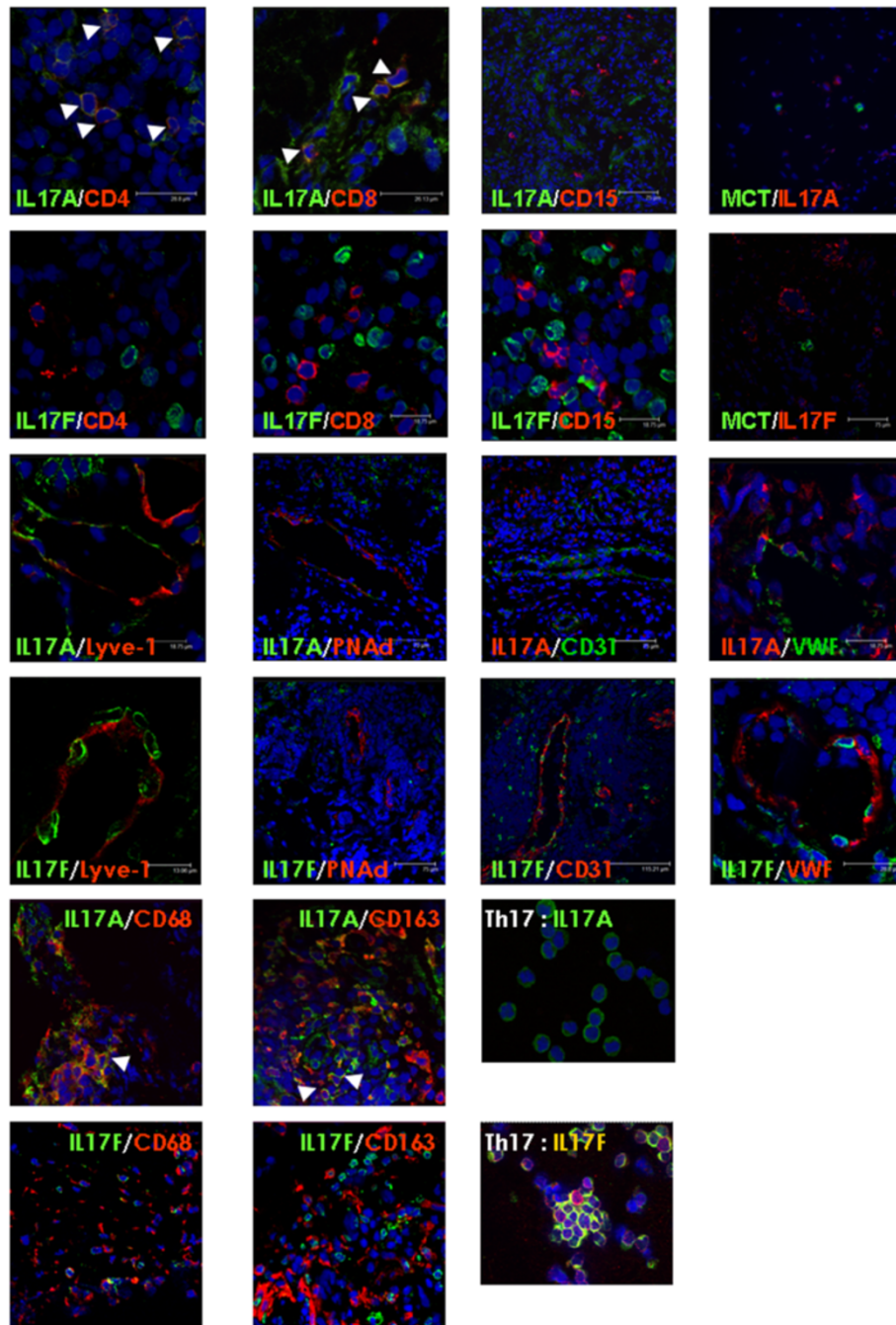
### Levels of IL-17A were significantly increased in synovial tissues of patients with inflammatory arthritis, but highly variable between patients

We used monoclonal antibodies against IL-17A, IL-17F, IL-17RA and IL-17RC to determine their protein expression in synovial tissue biopsies using IHC (Figure 1A). A diffuse cytoplasmic staining pattern was observed for IL-17A in the sublining as well as in the intimal lining layer of the synovium. IL-17F showed a more cellular staining pattern, mainly in the synovial sublining. In line with their ubiquitous expression, both IL-17RA and IL-17RC were abundantly present at high IL-17RC levels in the intimal lining layer. Whereas the levels of IL-17F, IL-17RA and IL-17RC were on average comparable between noninflamed synovial tissues ( $n = 7$ ) and the levels observed in patients with inflammatory arthritis ( $n = 40$ ), the levels of IL-17A were significantly increased in patients with inflammatory arthritis (Figure 1B).

The expression levels of IL-17A and their receptors were not different between RA, OA and PsA patients (Figure 1C). This is in line with the results of the study by Benham and colleagues, which showed no difference in synovial IL-17 expression between RA, PsA and OA patients, although those investigators did not (further) stain for the different members of the IL-17 Family and their receptors [35]. The levels of IL-17F were significantly increased in PsA compared to OA patients.

Interestingly, the overall levels of IL-17RA were positively correlated with IL-17F ( $r = 0.45$ ,  $P = 0.001$ ), but not with IL-17A ( $r = 0.15$ ,  $P = 0.36$ ). In addition, the overall IL-17RC level was positively correlated with both IL-17A and IL-17F ( $r = 0.48$ ,  $P = 0.005$ ; and  $r = 0.39$ ,  $P = 0.012$ , respectively). In a subanalysis, similar correlations were observed for individual patients within a group of the same diagnosis (data not shown). This may suggest that targeting IL-17RC might be a more effective treatment strategy through inhibition of both the IL-17A and IL-17F pathways.

The baseline characteristics between the different groups of patients were comparable, except for age and swollen joint count 28 (SJC28). OA patients were significantly older than the other groups. The RA patients had more swollen joints compared to the PsA patients. The expression levels of IL-17A, IL-17F, IL-17RA and IL-17RC were not correlated with clinical parameters.



**Figure 2 Colocalisation between interleukins 17A, 17F and cell-specific markers.** The colocalisation between interleukin 17A (IL-17A) or IL-17F and markers for T cells, neutrophils, mast cells, macrophages, blood vessels and lymphatics was examined using double-immunofluorescence labelling and visualised by confocal microscopy. White arrowheads indicate colocalisation. Representative pictures are presented. Type 17 helper T (Th17) cells were used to show that the IL-17A and IL-17F antibodies used can detect Th17-produced IL-17. Lyve-1, Lymphatic vessel endothelial hyaluronan receptor 1; MCT, Mast cell tryptase; PNAd, Peripheral lymph node addressin; vWF, von Willebrand factor. Pictures illustrating the separate channels for CD4, CD8, CD68 and CD163 staining with IL-17 are shown in Additional file 1: Figure S1 and Additional file 2: Figure S2.

However, IL-17RA was positively correlated with the erythrocyte sedimentation rate (ESR) and C-reactive protein ( $r = 0.41$  and  $P = 0.040$ ,  $r = 0.41$  and  $P = 0.045$ , respectively). The correlation with ESR was strongest in

the PsA patients ( $r = 0.50$  and  $P = 0.028$ ). Only the levels of IL-17F showed a weak but statistically significant negative correlation with age ( $r = -0.41$ ,  $P < 0.005$ ). We cannot exclude the possibility that this may be explained

by chance in light of multiple comparisons, although the *P*-value was quite low.

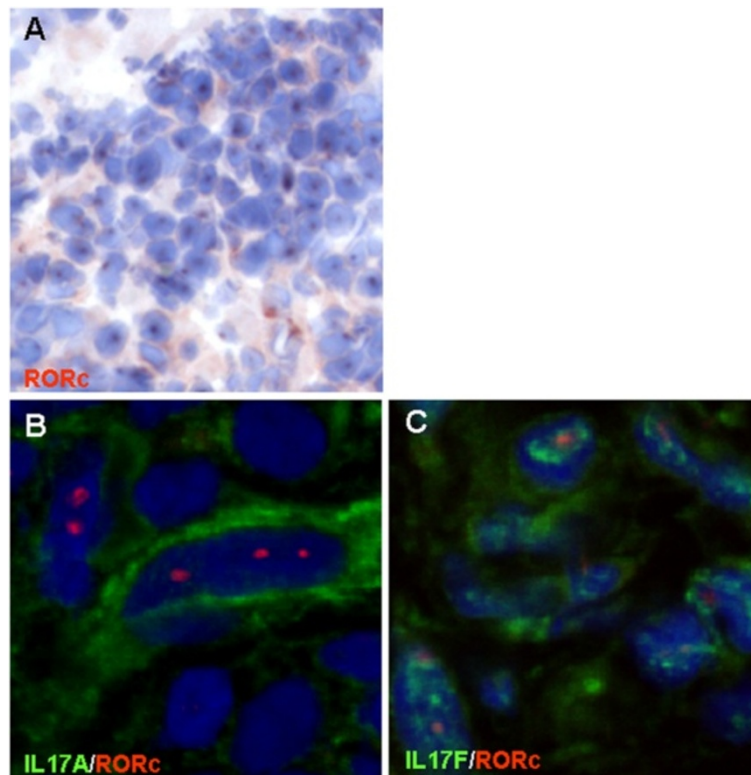
Altogether, these immunohistochemical analyses revealed a striking heterogeneous expression pattern for IL-17A, IL-17F and their receptors in inflamed synovium. Although some synovial tissues showed high expression levels, in other patients almost no expression was observed. This variability may explain the variable clinical responses observed in clinical trials in which IL-17 was targeted (reviewed in [27,36]). In addition, low levels of IL-17 may reflect the possible shift from Th17 to Th1 cells at sites of local inflammation [4,37].

#### Cellular sources of IL-17A and IL-17F in inflamed synovium

Conflicting data have been reported on the cellular sources of IL-17A and IL-17F in inflamed synovia of patients with different forms of arthritis. In the first studies showing IL-17 production and protein expression in RA synovial tissue biopsies using IHC, researchers reported lymphocytic morphology of IL-17-positive cells [12], and IL-17A and IL-17F staining was especially prominent in lymphocyte aggregates [12,38-41]. IL-17A-producing CD4+

T cells have also been observed in the synovial fluid of RA patients [42,43] and PsA patients [35,41,44]. Later reports suggested colocalisation of IL-17 with markers for mast cells [45,46] and neutrophils [47] in RA synovial tissue. Also, in ankylosing spondylitis, cells of the innate immune system appeared to be a major source of IL-17 [48,49]. The conflicting observations may be the result of technical difficulties in detecting IL-17 in paraffin-embedded synovial tissue, the use of polyclonal antibodies to detect IL-17, and clinical differences between patients studied.

We performed detailed double-immunofluorescence studies to investigate colocalisation of IL-17A or IL-17F and markers for T cells, neutrophils, mast cells and macrophages. In addition, because our IHC results indicated the presence of IL-17A and IL-17F in vessel-like structures, we included markers for blood vessels and lymphatics. To investigate whether the origin of IL-17A or IL-17F was different between RA, PsA and OA patients, synovial tissue was stained from at least five different patients per diagnosis for the analysis of T cells, mast cells and macrophages. For the other markers, we stained synovial tissues from at



**Figure 3 Retinoic acid receptor-related orphan receptor  $\gamma$ t-positive cells in synovium.** Immunohistochemistry showed an abundant nuclear expression of the IL-17-specific transcription factor retinoic acid receptor-related orphan receptor  $\gamma$ t (ROR $\gamma$ t) (shown in red) in synovial tissue biopsies (A). Immunofluorescence showed that ROR $\gamma$ t-positive cells (red nuclei) in synovial tissue were indeed positive for interleukin 17A (IL-17A) (B) or IL-17F (C).

least two different patients per diagnosis. Representative confocal pictures are shown in Figure 2, Additional file 1: Figure S1 and Additional file 2: Figure S2.

The frequency of CD15+ neutrophils in the synovium was very low, and no colocalisation with IL-17A or IL-17F was observed, suggesting that, in inflamed synovium, these cells do not contribute to IL-17 production. CD4+ and CD8+ T cells stained positive for IL-17A, and few cells were positive for IL-17F. CD68+ and CD163+ macrophages showed colocalisation with IL-17A and, to a lesser extent, with IL-17F. We only occasionally observed colocalisation between MCT + mast cells and IL-17A or IL-17F, mainly in PsA patients. Interestingly, we observed IL-17A- and IL-17F-positive cells in vWF+, CD31+ and PNAd + blood vessels, as well as in Lyve-1 positive lymphatics. Overall, no clear differences were observed between RA, PsA and OA patients.

Colocalisation between IL-17 and specific cell markers does not necessarily mean that IL-17 is produced by this specific cell. Because the used IL-17 antibodies are non-neutralising, we may detect IL-17 bound to its receptor, which probably is the case in the IL-17-positive blood vessels and lymphatics. To investigate whether IL-17 can be produced by infiltrated cells in the synovium, we stained for the transcription factor ROR $\gamma$ t, which is essential for IL-17 production. ROR $\gamma$ t-positive cells were abundantly present throughout the synovial tissues (Figure 3A). As expected, most ROR $\gamma$ t-positive cells were CD3+ T cells (data not shown). More importantly, ROR $\gamma$ t nuclear staining colocalised with IL-17A and IL-17F around the same cell, indicating local cytokine production (Figures 3B and C).

## Discussion

We observed increased IL-17A expression in synovial tissues from inflammatory arthritis patients compared with noninflamed control synovium, supporting the concept that IL-17 is a key cytokine in chronic inflammatory arthritis. The levels of IL-17A, IL-17F and their receptors are comparable, on average, between RA, PsA and OA. Using double-immunofluorescence we show that T cells and macrophages can contribute to the production of IL-17A and IL-17F. Colocalisation between the transcription factor ROR $\gamma$ t and IL-17 indicate local cytokine production. The heterogeneous expression patterns of IL-17A, IL-17F and their receptors could perhaps explain the limited clinical response observed in clinical trials in which IL-17A in arthritis is targeted, as many patients exhibit very low IL-17 levels at the site of inflammation. These results suggest that patient stratification based on IL-17 expression may be required to demonstrate the beneficial effect of anti-IL-17 therapy in subsets of patients.

## Additional files

**Additional file 1: Figure S1.** Colocalisation between IL-17A and CD4, CD8, CD68 and CD163 was examined using double-immunofluorescence labelling and visualized by confocal microscopy. Representative pictures showing separate channels are presented.

**Additional file 2: Figure S2.** Colocalisation between IL-17F and CD4, CD8, CD68 and CD163 was examined using double-immunofluorescence labelling and visualized by confocal microscopy. Representative pictures showing separate channels are presented.

## Abbreviations

ACPA: Anticitrullinated protein antibody; CD: Cluster of differentiation; CRP: C-reactive protein; ESR: Erythrocyte sedimentation rate; HRP: Horseradish peroxidase; IHC: Immunohistochemistry; IL: Interleukin; Lyve-1: Lymphatic vessel endothelial hyaluronan receptor 1; MCT: Mast cell tryptase; MTX: Methotrexate; OA: Osteoarthritis; PBS: Phosphate-buffered saline; PNAd: Peripheral lymph node addressin; PsA: Psoriatic arthritis; RA: Rheumatoid arthritis; RF: Rheumatoid factor; RORC: Retinoic acid receptor-related orphan receptor C; ROR $\gamma$ : Retinoic acid receptor-related orphan receptor  $\gamma$ ; SJC28: Swollen joint count of 28 joints; TJC28: Tender joint count of 28 joints; VAS GDA: Visual analogue scale (range 0 to 100 mm) of global disease activity; vWF: von Willebrand factor.

## Competing interests

DMG and PPT are currently employees of GlaxoSmithKline, Stevenage, UK. GlaxoSmithKline had no involvement in this project.

## Authors' contributions

LGMvB, MCL and PPT were responsible for study conception and experiment design. DMG, PPT and MWT were responsible for recruitment of patients, acquisition of clinical data and collection of synovial tissue. LGMvB, DC, SA and THR were responsible for acquisition of experimental data. LGMvB, MCL, DC, THR, MWT and PPT were responsible for analysis and interpretation of data. LGMvB and MCL drafted the manuscript under the close supervision of PPT. All authors read and revised the manuscript critically for important intellectual content and approved the final version.

## Acknowledgements

We thank our study subjects for participating in the study, the arthroscopy team for obtaining synovial tissue biopsies and the AMC KIR laboratory for sample processing. In addition, we thank Barbara Snoek and Geurt Schilders for setting up several immunohistochemistry stainings and the van Leeuwenhoek Centre for Advanced Microscopy at the AMC for confocal microscopy. We also thank Dr Y Souwer for providing Th17 cells. This study was sponsored by the European Union-funded Innovative Medicines Initiative BeTheCure project (115142).

## Author details

<sup>1</sup>Division of Clinical Immunology and Rheumatology, Academic Medical Centre, University of Amsterdam, Meibergdreef 9, 1105, AZ, Amsterdam, the Netherlands. <sup>2</sup>Department of Experimental Immunology, Academic Medical Centre, University of Amsterdam, Meibergdreef 9, 1105 AZ, Amsterdam, The Netherlands. <sup>3</sup>Current address: University of Cambridge, U.K. Trinity Lane, Cambridge CB2 1TN, UK, and GlaxoSmithKline, Stevenage UK Gunnels Wood Road, Stevenage Herts SG1 2NY, UK

Received: 2 February 2014 Accepted: 13 August 2014

Published online: 22 August 2014

## References

1. Miossec P, Korn T, Kuchroo VK: Interleukin-17 and type 17 helper T cells. *N Engl J Med* 2009, **361**:888–898.
2. Annunziato F, Romagnani S: The transient nature of the Th17 phenotype. *Eur J Immunol* 2010, **40**:3312–3316.
3. Muranski P, Restifo NP: Essentials of Th17 cell commitment and plasticity. *Blood* 2013, **121**:2402–2414.
4. Nistala K, Adams S, Cambrook H, Ursu S, Olivito B, de Jager W, Evans JG, Cimaz R, Bajaj-Elliott M, Wedderburn LR: Th17 plasticity in human



- autoimmune arthritis is driven by the inflammatory environment. *Proc Natl Acad Sci U S A* 2010, **107**:14751–14756.
5. Harrington LE, Hatton RD, Mangan PR, Turner H, Murphy TL, Murphy KM, Weaver CT: Interleukin 17-producing CD4<sup>+</sup> effector T cells develop via a lineage distinct from the T helper type 1 and 2 lineages. *Nat Immunol* 2005, **6**:1123–1132.
  6. Shen F, Gaffen SL: Structure-function relationships in the IL-17 receptor: implications for signal transduction and therapy. *Cytokine* 2008, **41**:92–104.
  7. Chabaud M, Fossiez F, Taupin JL, Miossec P: Enhancing effect of IL-17 on IL-1-induced IL-6 and leukemia inhibitory factor production by rheumatoid arthritis synoviocytes and its regulation by Th2 cytokines. *J Immunol* 1998, **161**:409–414.
  8. Katz Y, Nativ O, Beer Y: Interleukin-17 enhances tumor necrosis factor  $\alpha$ -induced synthesis of interleukins 1, 6, and 8 in skin and synovial fibroblasts: a possible role as a "fine-tuning cytokine" in inflammation processes. *Arthritis Rheum* 2001, **44**:2176–2184.
  9. Yao Z, Fanslow WC, Seldin MF, Rousseau AM, Painter SL, Comeau MR, Cohen JJ, Spriggs MK: *Herpesvirus saimiri* encodes a new cytokine, IL-17, which binds to a novel cytokine receptor. *Immunity* 1995, **3**:811–821.
  10. Toy D, Kugler D, Wolfson M, Vanden Bos T, Gurgel J, Derry J, Tocker J, Peschon J: Cutting edge: interleukin 17 signals through a heteromeric receptor complex. *J Immunol* 2006, **177**:36–39.
  11. Gaffen SL: Structure and signalling in the IL-17 receptor family. *Nat Rev Immunol* 2009, **9**:556–567.
  12. Chabaud M, Durand JM, Buchs N, Fossiez F, Page G, Frappart L, Miossec P: Human interleukin-17: A T cell-derived proinflammatory cytokine produced by the rheumatoid synovium. *Arthritis Rheum* 1999, **42**:963–970.
  13. Kotake S, Udagawa N, Takahashi N, Matsuzaki K, Itoh K, Ishiyama S, Saito S, Inoue K, Kamatani N, Gillespie MT, Martin TJ, Suda T: IL-17 in synovial fluids from patients with rheumatoid arthritis is a potent stimulator of osteoclastogenesis. *J Clin Invest* 1999, **103**:1345–1352.
  14. Ziolkowska M, Koc A, Luszczkiewicz G, Ksiezopolska-Pietrzak K, Klimczak E, Chwalinska-Sadowska H, Maslinski W: High levels of IL-17 in rheumatoid arthritis patients: IL-15 triggers in vitro IL-17 production via cyclosporin A-sensitive mechanism. *J Immunol* 2000, **164**:2832–2838.
  15. Koenders MI, Kolls JK, Oppers-Walgreen B, van den Bersselaar LV, Joosten LA, Schurr JR, Schwarzenberger P, van den Berg WB, Lubberts E: Interleukin-17 receptor deficiency results in impaired synovial expression of interleukin-1 and matrix metalloproteinases 3, 9, and 13 and prevents cartilage destruction during chronic reactivated streptococcal cell wall-induced arthritis. *Arthritis Rheum* 2005, **52**:3239–3247.
  16. Lubberts E, Koenders MI, Oppers-Walgreen B, van den Bersselaar L, Coenen-de Roo CJ, Joosten LA, van den Berg WB: Treatment with a neutralizing anti-murine interleukin-17 antibody after the onset of collagen-induced arthritis reduces joint inflammation, cartilage destruction, and bone erosion. *Arthritis Rheum* 2004, **50**:650–659.
  17. Plater-Zyberk C, Joosten LA, Helsen MM, Koenders MI, Baeuerle PA, van den Berg WB: Combined blockade of granulocyte-macrophage colony stimulating factor and interleukin 17 pathways potently suppresses chronic destructive arthritis in a tumour necrosis factor  $\alpha$ -independent mouse model. *Ann Rheum Dis* 2009, **68**:721–728.
  18. Nakae S, Nambu A, Sudo K, Iwakura Y: Suppression of immune induction of collagen-induced arthritis in IL-17-deficient mice. *J Immunol* 2003, **171**:6173–6177.
  19. Kirkham BW, Lassere MN, Edmonds JP, Juhasz KM, Bird PA, Lee CS, Shnier R, Portek IJ: Synovial membrane cytokine expression is predictive of joint damage progression in rheumatoid arthritis: a two-year prospective study (the DAMAGE study cohort). *Arthritis Rheum* 2006, **54**:1122–1131.
  20. Peck A, Mellins ED: Breaking old paradigms: Th17 cells in autoimmune arthritis. *Clin Immunol* 2009, **132**:295–304.
  21. Genovese MC, Van den Bosch F, Roberson SA, Bojin S, Biagini IM, Ryan P, Sloan-Lancaster J: LY2439821, a humanized anti-interleukin-17 monoclonal antibody, in the treatment of patients with rheumatoid arthritis: A phase I randomized, double-blind, placebo-controlled, proof-of-concept study. *Arthritis Rheum* 2010, **62**:929–939.
  22. Hueber W, Patel DD, Drija T, Wright AM, Koroleva I, Bruin G, Antoni C, Draelos Z, Gold MH, the Psoriasis Study Group, Durez P, Tak PP, Gomez-Reino JJ, the Rheumatoid Arthritis Study Group, Foster CS, Kim RY, Samson CM, Falk NS, Chu DS, Callanan D, Nguyen QD, the Uveitis Study Group, Rose K, Haider A, Di Padova F: Effects of AIN457, a fully human antibody to interleukin-17A, on psoriasis, rheumatoid arthritis, and uveitis. *Sci Transl Med* 2010, **2**:52ra72.
  23. Papp KA, Leonardi C, Menter A, Ortonne JP, Krueger JG, Kricorian G, Aras G, Li J, Russell CB, Thompson EH, Baumgartner S: Brodalumab, an anti-interleukin-17-receptor antibody for psoriasis. *N Engl J Med* 2012, **366**:1181–1189.
  24. McInnes IB, Sieper J, Braun J, Emery P, van der Heijde D, Isaacs JD, Dahmen G, Wollenhaupt J, Schulze-Koops H, Kogan J, Ma S, Schumacher MM, Bertolino AP, Hueber W, Tak PP: Efficacy and safety of secukinumab, a fully human anti-interleukin-17A monoclonal antibody, in patients with moderate-to-severe psoriatic arthritis: a 24-week, randomised, double-blind, placebo-controlled, phase II proof-of-concept trial. *Ann Rheum Dis* 2014, **73**:349–356.
  25. Baeten D, Baraliakos X, Braun J, Sieper J, Emery P, van der Heijde D, McInnes I, van Laar JM, Landewé R, Wordsworth P, Wollenhaupt J, Kellner H, Paramarta J, Wei J, Brachet A, Bek S, Laurent D, Li Y, Wang YA, Bertolino AP, Gsteiger S, Wright AM, Hueber W: Anti-interleukin-17A monoclonal antibody secukinumab in treatment of ankylosing spondylitis: a randomised, double-blind, placebo-controlled trial. *Lancet* 2013, **382**:1705–1713.
  26. Miossec P, Kolls JK: Targeting IL-17 and TH17 cells in chronic inflammation. *Nat Rev Drug Discov* 2012, **11**:763–776.
  27. Patel DD, Lee DM, Kolbinger F, Antoni C: Effect of IL-17A blockade with secukinumab in autoimmune diseases. *Ann Rheum Dis* 2013, **72**:ii116–ii123.
  28. Arnett FC, Edworthy SM, Bloch DA, McShane DJ, Fries JF, Cooper NS, Healey LA, Kaplan SR, Liang MH, Luthra HS, Medsger TA Jr, Mitchell DM, Neustadt DH, Pinals RS, Schaller JG, Sharp JT, Wilder RL, Hunder GG: The American Rheumatism Association 1987 revised criteria for the classification of rheumatoid arthritis. *Arthritis Rheum* 1988, **31**:315–324.
  29. Taylor W, Gladman D, Helliwell P, Marchesoni A, Mease P, Mielants H: Classification criteria for psoriatic arthritis: development of new criteria from a large international study. *Arthritis Rheum* 2006, **54**:2665–2673.
  30. Altman R, Asch E, Bloch D, Bole G, Borenstein D, Brandt K, Christy W, Cooke TD, Greenwald R, Hochberg M, Diagnostic and Therapeutic Criteria Committee of the American Rheumatism Association: Development of criteria for the classification and reporting of osteoarthritis: classification of osteoarthritis of the knee. *Arthritis Rheum* 1986, **29**:1039–1049.
  31. Gerlag DM, Tak PP: How to perform and analyse synovial biopsies. *Best Pract Res Clin Rheumatol* 2009, **23**:221–232.
  32. van de Sande MG, Gerlag DM, Lodde BM, van Baarsen LG, Alivernini S, Codullo V, Felea I, Vieira-Sousa E, Fearon U, Reece R, Montecucco C, Veale DJ, Pitzalis C, Emery P, Klareskog L, McInnes IB, Tak PP: Evaluating anti-rheumatic treatments using synovial biopsy: a recommendation for standardisation to be used in clinical trials. *Ann Rheum Dis* 2011, **70**:423–427.
  33. Haringman JJ, Vinckenog M, Gerlag DM, Smeets TJ, Zwinderman AH, Tak PP: Reliability of computerized image analysis for the evaluation of serial synovial biopsies in randomized controlled trials in rheumatoid arthritis. *Arthritis Res Ther* 2005, **7**:R862–R867.
  34. Smeets TJ, Kraan MC, Galjaard S, Youssef PP, Smith MD, Tak PP: Analysis of the cell infiltrate and expression of matrix metalloproteinases and granzyme B in paired synovial biopsy specimens from the cartilage-pannus junction in patients with RA. *Ann Rheum Dis* 2001, **60**:561–565.
  35. Benham H, Norris P, Goodall J, Wechalekar MD, FitzGerald O, Szentpetery A, Smith M, Thomas R, Gaston H: Th17 and Th22 cells in psoriatic arthritis and psoriasis. *Arthritis Res Ther* 2013, **15**:R136.
  36. Kellner H: Targeting interleukin-17 in patients with active rheumatoid arthritis: rationale and clinical potential. *Ther Adv Musculoskelet Dis* 2013, **5**:141–152.
  37. Cosmi L, Cimaz R, Maggi L, Santarlasci V, Capone M, Borriello F, Frosali F, Querci V, Simonini G, Barra G, Piccinni MP, Liotta F, De Palma R, Maggi E, Romagnani S, Annunziato F: Evidence of the transient nature of the Th17 phenotype of CD4<sup>+</sup> CD161<sup>+</sup> T cells in the synovial fluid of patients with juvenile idiopathic arthritis. *Arthritis Rheum* 2011, **63**:2504–2515.
  38. Zrioual S, Ecochard R, Tournadre A, Lenief V, Cazalis MA, Miossec P: Genome-wide comparison between IL-17A- and IL-17F-induced effects in human rheumatoid arthritis synoviocytes. *J Immunol* 2009, **182**:3112–3120.
  39. Evans HG, Gullick NJ, Kelly S, Pitzalis C, Lord GM, Kirkham BW, Taams LS: In vivo activated monocytes from the site of inflammation in humans

- specifically promote Th17 responses. *Proc Natl Acad Sci U S A* 2009, **106**:6232–6237.
40. Stamp LK, Easson A, Pettersson L, Highton J, Hessian PA: **Monocyte derived interleukin (IL)-23 is an important determinant of synovial IL-17A expression in rheumatoid arthritis.** *J Rheumatol* 2009, **36**:2403–2408.
  41. Raychaudhuri SP, Raychaudhuri SK, Genovese MC: **IL-17 receptor and its functional significance in psoriatic arthritis.** *Mol Cell Biochem* 2012, **359**:419–429.
  42. Gullick NJ, Evans HG, Church LD, Jayaraj DM, Filer A, Kirkham BW, Taams LS: **Linking power Doppler ultrasound to the presence of th17 cells in the rheumatoid arthritis joint.** *PLoS One* 2010, **5**:e12516.
  43. Arroyo-Villa I, Bautista-Caro MB, Balsa A, Aguado-Acín P, Nuño L, Bonilla-Hernán MG, Puig-Kröger A, Martín-Mola E, Miranda-Carús ME: **Frequency of Th17 CD4+ T cells in early rheumatoid arthritis: a marker of anti-CCP seropositivity.** *PLoS One* 2012, **7**:e42189.
  44. Fiocco U, Accordi B, Martini V, Oliviero F, Facco M, Cabrelle A, Piva L, Molena B, Caso F, Costa L, Scanu A, Pagnin E, Atteno M, Scarpa R, Basso G, Semenzato G, Punzi L, Doria A, Dayer JM: **JAK/STAT/PKC $\delta$  molecular pathways in synovial fluid T lymphocytes reflect the in vivo T helper-17 expansion in psoriatic arthritis.** *Immunol Res* 2014, **58**:61–69.
  45. Hueber AJ, Asquith DL, Miller AM, Reilly J, Kerr S, Leipe J, Melendez AJ, McInnes IB: **Mast cells express IL-17A in rheumatoid arthritis synovium.** *J Immunol* 2010, **184**:3336–3340.
  46. Suurmond J, Dorée AL, Boon MR, Knol EF, Huizinga TW, Toes RE, Schuerwegh AJ: **Mast cells are the main interleukin 17-positive cells in anticitrullinated protein antibody-positive and -negative rheumatoid arthritis and osteoarthritis synovium.** *Arthritis Res Ther* 2011, **13**:R150.
  47. Moran EM, Heydrich R, Ng CT, Saber TP, McCormick J, Sieper J, Appel H, Fearon U, Veale DJ: **IL-17A expression is localised to both mononuclear and polymorphonuclear synovial cell infiltrates.** *PLoS One* 2011, **6**:e24048.
  48. Appel H, Maier R, Wu P, Scheer R, Hempfing A, Kayser R, Thiel A, Radbruch A, Loddenkemper C, Sieper J: **Analysis of IL-17<sup>+</sup> cells in facet joints of patients with spondyloarthritis suggests that the innate immune pathway might be of greater relevance than the Th17-mediated adaptive immune response.** *Arthritis Res Ther* 2011, **13**:R95.
  49. Noordenbos T, Yeremenko N, Gofita I, van de Sande M, Tak PP, Cañete JD, Baeten D: **Interleukin-17-positive mast cells contribute to synovial inflammation in spondylarthritis.** *Arthritis Rheum* 2012, **64**:99–109.

doi:10.1186/s13075-014-0426-z

**Cite this article as:** van Baarsen et al.: Heterogeneous expression pattern of interleukin 17A (IL-17A), IL-17F and their receptors in synovium of rheumatoid arthritis, psoriatic arthritis and osteoarthritis: possible explanation for nonresponse to anti-IL-17 therapy? *Arthritis Research & Therapy* 2014 **16**:426.

**Submit your next manuscript to BioMed Central and take full advantage of:**

- Convenient online submission
- Thorough peer review
- No space constraints or color figure charges
- Immediate publication on acceptance
- Inclusion in PubMed, CAS, Scopus and Google Scholar
- Research which is freely available for redistribution

Submit your manuscript at  
www.biomedcentral.com/submit

