

ERRATUM

Open Access



Erratum to: Concentration of antibodies against *Porphyromonas gingivalis* increased before the onset of symptoms of rheumatoid arthritis

Linda Johansson^{1†}, Natalia Sherina^{2†}, Nastya Kharlamova², Barbara Potempa³, Barbro Larsson², Lena Israelsson², Jan Potempa^{3,4}, Solbritt Rantapää-Dahlqvist^{1*†} and Karin Lundberg^{2†}

Erratum

Unfortunately, after publication of this article [1], it was noticed that the x-axis markers for Fig. 2a and b were incorrect. The corrected figure can be seen below.

Author details

¹Public Health and Clinical Medicine/Rheumatology, Umeå University, Umeå, Sweden. ²Department of Medicine Solna, Rheumatology Unit, Karolinska Institutet, Stockholm, Sweden. ³Department of Oral Immunology and Infectious Diseases, University of Louisville, School of Dentistry, Louisville, KY, USA. ⁴Department of Microbiology, and Malopolska Centre of Biotechnology, Faculty of Biochemistry, Biophysics and Biotechnology, Jagiellonian University, Krakow, Poland.

Received: 24 October 2016 Accepted: 25 October 2016

Published online: 04 November 2016

Reference

1. Johansson L, Sherina N, Kharlamova N, Potempa B, Larsson B, Israelsson L, Potempa J, Rantapää-Dahlqvist S, Lundberg K. Concentration of antibodies against *Porphyromonas gingivalis* is increased before the onset of symptoms of rheumatoid arthritis. *Arthritis Res Ther*. 2016;18:201. doi:10.1186/s13075-016-1100-4.

* Correspondence: solbritt.rantapaa.dahlqvist@umu.se

†Equal contributors

¹Public Health and Clinical Medicine/Rheumatology, Umeå University, Umeå, Sweden

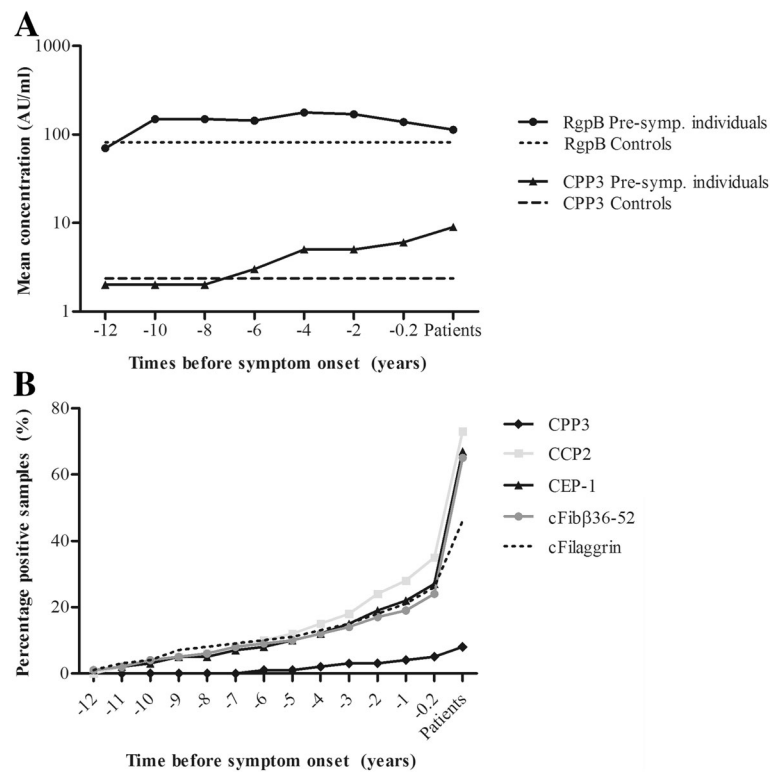


Fig. 2 Antibody responses during the pre-dating time until the time point for onset of symptoms of RA, from pre-symptomatic individuals who donated multiple blood samples pre-dating the onset of symptoms of RA ($n = 422$) and from patients with RA ($n = 192$). Logarithmic mean concentrations during 2-year periods of anti-RgpB and anti-CPP3 antibodies in pre-symptomatic individuals, patients with RA and controls ($n = 198$) (a). Accumulated percentages of antibody positivity for anti-CPP3, anti-CCP2, anti-cfibrinogen β 36-52 (cFib β 36-52), anti-CEP-1 (α -enolase) and anti-cfilaggrin (cFilaggrin) antibodies in pre-symptomatic individuals and in patients with RA (b). 0 time point for onset of RA symptoms