

RESEARCH ARTICLE

Open Access



Similar alteration for mental and physical aspects in health-related quality of life over 5 to 8 years in 1347 patients with early arthritis and early inflammatory back pain

Déborah Puyraimond-Zemmour^{1,2,10*}, Benjamin Granger^{1,3}, Anna Molto^{4,5}, Cécile Gaujoux-Viala⁶, Francis Guillemin⁷, Adeline Ruyssen-Witrand^{8,9}, Maxime Dougados^{4,5}, Bruno Fautrel^{1,2} and Laure Gossec^{1,2}

Abstract

Introduction: Health-related quality of life (HRQoL) is a priority for patients. The objectives were to describe the changes in HRQoL over 5–8 years in patients with early arthritis (EA) or early inflammatory back pain (IBP) and to explore factors associated to HRQoL.

Patients and methods: In 2 prospective observational French cohorts (ESPOIR for EA patients and DESIR for early IBP patients), HRQoL was assessed regularly over 5–8 years, using the SF36 physical and mental composite scores (PCS and MCS, range 0–100). Disease activity was assessed by DAS28-ESR and ASDAS-CRP. Univariate and multivariate linear mixed-effect models and trajectory-based mapping were applied.

Results: In all, 1347 patients (701 EA and 646 early IBP) were analysed: mean age 48.4 ± 12.2 and 33.9 ± 8.7 years respectively; mean disease duration 3.4 ± 1.7 and 18.2 ± 10.8 months; and 76.3% and 55.0% females. At baseline, in EA, mean PCS and MCS were respectively 40.2 ± 9.1 and 40.4 ± 11.2 and, in early IBP, were respectively 38.5 ± 8.5 and 39.8 ± 10.9 . Over follow-up, HRQoL mean levels improved mostly over the first 6 months ($p < 0.001$). Two trajectories were evidenced in both diseases. The 'good HRQoL' trajectory groups, i.e. 54–61% of patients, reached levels of HRQoL close to population norms. DAS28-ESR and ASDAS-CRP over time were related to PCS (range of explained variance 9–43%, $p < 0.001$ in the mixed models) but not to MCS.

Conclusion: HRQoL was altered similarly for both physical and mental aspects in EA and early IBP. Disease activity only partly explained HRQoL: the drivers of HRQoL should be further explored.

Keywords: Quality of life, Rheumatoid arthritis, Axial spondyloarthritis, Patient outcomes assessment, Early arthritis, Early inflammatory back pain

Background

Health-related quality of life (HRQoL) is a priority for patients living with a chronic disease [1, 2]. HRQoL is a broad ranging concept incorporating in a complex way the person's physical health, psychological state, level of independence, and social relationships [1, 3]. HRQoL is recognized as an important outcome both in rheumatoid

arthritis (RA) and axial spondyloarthritis (axSpA) and preservation or improvement of HRQoL should be one of the objectives of RA and axSpA management [4–7]. HRQoL is frequently measured with the 36-Item Short Form Survey (SF-36), a generic questionnaire assessing both physical and mental components of HRQoL [8].

Several studies have shown that patients with established RA and axSpA have an impaired quality of life for both physical and mental components [9–13]. Due to the period of the diagnosis and to the potential lack of coping mechanisms in early disease versus established disease, HRQoL may be altered differently in early

* Correspondence: debozem@gmail.com

¹Sorbonne Université, Institut Pierre Louis d'Epidémiologie et de Santé Publique, GRC-UPMC 08 (EEMOIS), Paris, France

²Department of rheumatology, AP-HP, Pitié Salpêtrière Hospital, Paris, France
Full list of author information is available at the end of the article



disease versus in established disease [14]. In early disease, such as early arthritis (EA) and early inflammatory back pain (IBP), HRQoL is also altered for patients entering a randomized clinical trial [15, 16]. However, to our knowledge, little information in an observational context is available about HRQoL in early diseases [17].

Furthermore, little is known about the natural history and evolution of HRQoL in these two chronic inflammatory diseases [18]. Data regarding HRQoL in RA and axSpA are either cross-sectional or are issued from selected population included in randomized trials [10, 16, 19–23]. Over a period of several years, HRQoL may be modified either through disease management or through self-management. We hypothesized that HRQoL would be profoundly modified in early disease but would improve over the next years.

HRQoL is very multifactorial and factors contributing to altered HRQoL in established RA and axSpA may include both inflammatory elements (such as inflammatory pain, stiffness and fatigue) and non-inflammatory elements (such as joint destruction or spinal ossification) [22, 24, 25]. Disease activity may be evaluated in RA by the Disease Activity Score 28—erythrocyte sedimentation rate (DAS28-ESR) and in axSpA by the Ankylosing Spondylitis Disease Activity Score—C reactive protein (ASDAS-CRP) [26, 27]. Assessing the link between HRQoL and ASDAS-CRP or DAS28-ESR may give interesting information on these potentially explanatory factors of HRQoL.

Thus, the objectives were to describe the changes in HRQoL over 5 to 8 years in patients with EA and early IBP and to explore factors associated to HRQoL.

Patients and methods

Study design

In the present study, two large, prospective, multicenter, longitudinal, observational French cohorts of patients were used. They have been previously described in detail [28, 29]. Briefly, ESPOIR (Etude et Suivi des Polyarthrites Indifférenciées Récentes) included patients with EA and DESIR (Devenir des Spondylarthropathies Indifférenciées Récentes) included patients with early IBP. Here, the first 8 years of ESPOIR and 5 years of DESIR follow-up were analyzed [28, 29].

These studies fulfilled current good clinical practice and obtained the approval of the appropriate ethical committees, and participants gave their written informed consent. Databases locked in February 2017 for DESIR and June 2017 for ESPOIR were used.

Patients

EA patients

A total of 813 patients were included in ESPOIR [25]. These were consecutive patients aged > 18 and < 70

years with EA defined as definite synovitis for less than 6 months and a certain, probable or possible clinical diagnosis of RA.

Early IBP patients

A total of 708 patients were included in DESIR [29]. These were consecutive patients aged > 18 and < 50 years with IBP for more than 3 months but less than 3 years and symptoms suggestive of axSpA diagnosis according to the investigator.

At baseline, in EA and early IBP, no patients were taking biological. Conventional DMARDs were prohibited. For our analysis, only patients for whom at least 3 HRQoL assessments were available over follow-up were included.

Data collection

Assessment of HRQoL

HRQoL was assessed with the SF-36, a generic and multi-dimensional questionnaire. SF-36 has 8 subdomains, which can be combined into physical and mental component summary scores, on a scale of 0–100 with higher scores indicating better health status and 50 (standard deviation \pm 10) indicated US norms for the general population (French norms of the composite scores for the general population are not available) [29–32]. Population-based norms (for the USA) were also represented for MCS and PCS and equal to 50 (standard deviation 50), and for France for the subdomains [32, 33]. The physical composite score (PCS) includes physical function, physical role, bodily pain and general health and the mental composite score (MCS) includes mental health, emotional role, social function and vitality [30, 31, 34]. SF-36 was assessed at baseline, every 6 months up to month 24, then once a year up to 8 years in EA and up to 5 years in early IBP.

Other data collection

Socio-demographic data included age, gender, educational level (above or below end of high school), occupational category (no professional activity/retired/workmen/farmer versus employee/intermediate/high level employment) and smoking status (yes/no) at baseline. For all patients, symptom duration and Health-Assessment Questionnaire (HAQ) were collected [35].

In RA, disease-related data at baseline included rheumatoid factor and anti-CCP antibodies, swollen joint counts and tender joint counts. The percentage of patients fulfilling the ACR/EULAR 2010 criteria classification for RA was calculated [36].

At each visit, use of any DMARDs (yes/no), oral glucocorticoids (yes/no) and disease activity through DAS28-ESR were collected [26]. The presence of

erosions on hands and/or feet according to local reading was collected (yes/no) at 4, 6 and 8 years.

In axSpA, disease-related data at baseline included HLAB27 status, radiological or MRI sacroiliitis according to local reading and symptom duration. The ASAS classification criteria were assessed [37]. At each visit, disease activity through ASDAS-CRP and use of Tumor Necrosis Factor inhibitors (TNFi) (yes/no) were collected, as well as extra-articular manifestations (uveitis, psoriasis or inflammatory bowel disease), peripheral articular manifestations and enthesitis. An ASDAS-CRP below 1.3 defines inactive disease and below 2.1, moderate activity [27].

Statistical analysis

Evolution of HRQoL

The mean and standard deviation of SF-36 MCS, SF-36 PCS and the 8 subdomains were calculated at each time-point over 8 years in EA and over 5 years in IBP and represented visually by curves and spidergrams [32]. Population-based norms (for the USA) were also represented for MCS and PCS, and for France for the subdomains [32, 33]. *P* values for trend over time for MCS and PCS scores were calculated by univariate linear mixed-effect models with an 'intercept' random effect [38].

To determine multiple homogeneous trajectories rather than a group-level of HRQoL over time, trajectory-based mapping was performed using the k-means design for longitudinal data (klm package in R) [39, 40]. The clusters were checked graphically [40]. Trajectory-based mapping models the relationship of a variable (SF36-MCS and PCS) with time: it defines the shape of the trajectory and the estimated proportion of the population belonging to each trajectory. Each participant is then assigned to the group for which his probability to belong to a trajectory is the highest [39, 40]. All patients included in the mixed models were analysed, and only patients with all HRQoL (MCS and PCS) assessments contributed to the trajectory-based mapping.

Finally, characteristics of patients in each trajectory were described and compared by Student's *t* and chi-square tests for EA and early IBP.

Factors associated to HRQoL

Factors associated to MCS and PCS over 8 years in EA and over 5 years in early IBP were assessed by univariate and multivariate linear random intercept mixed-effect models. Baseline potentially explanatory variables entered in the univariate mixed-effect model were for both disease groups: age, gender, symptom duration, educational level, occupational category, smoking status and baseline SF-36 MCS and PCS. In EA, covariates

changing over time were DAS28-ESR, radiographic erosions, DMARDs (yes/no) and oral glucocorticoids (yes/no).

In early IBP, additional baseline variables entered were HLAB27 and radiological or MRI sacroiliitis. Covariates changing over time were ASDAS-CRP, TNFi (yes/no) and extra-articular, peripheral and enthesitic manifestations (yes/no).

Covariates were included in the multivariate model if $p < 0.20$ in univariate analysis. The multivariate analyses were adjusted for baseline MCS and PCS. Baseline variables were included in uni- and multivariate analyses because baseline variables are highly explanatory for later outcomes [41, 42]. Sensitivity analyses were performed in the subgroup of patients fulfilling the ASAS and RA classification criteria [36]. To illustrate the contribution of the disease activity in the multivariate mixed models, the explained variance (R^2) was calculated by univariate logistic regression at baseline and final assessments for indicative purposes.

All analyses were performed using 2009–2016 R version 1.0.143 [43].

Results

Available data concerned 701 patients at baseline and 508 at 8 years in EA and 646 patients at baseline and 435 at 5 years in early IBP. Thus, 1347 patients contributed to the mixed models and 1025 (566 EA and 459 early IBP) contributed to the trajectory-based mapping.

Patients characteristics

In all, 1347 patients were analysed: of the 813 ESPOIR patients, 701 had at least 3 SF-36 assessment available over 8 years. Of these, 568 (81.4%) satisfied the RA classification criteria. At baseline, mean age was 48.4 ± 12.2 years; 535 (76.3%) were females; mean swollen joint count was 8.4 ± 7.0 ; mean tender joint count was 7.4 ± 5.4 ; 229 (32.9%) had rheumatoid factor and/or anti CCP antibodies; mean DAS28-ESR was 5.12 ± 1.30 ; and 639 (91.2%) were considered in moderate/high disease activity (Table 1) [26]. Over follow-up, 190 (27.10%) received a biologic.

Of the 708 DESIR patients, 646 had at least 3 SF-36 assessments available over 5 years and were analysed. Of these, 402 (62.2%) satisfied the ASAS classification criteria. At baseline, mean age was 33.9 ± 8.7 years; 255 (55.0%) were females; 177 (27.2%) had extra-articular manifestations; 175 (27.2%) had peripheral arthritis; 362 (56.0%) had enthesitis; 228 (35.3%) had radiological or MRI sacroiliitis; and 379 (58.8%) were HLAB27 positive. Mean ASDAS-CRP was 2.63 ± 0.93 , and 571 (92.7%) had moderate or high disease activity [24]. Over the first 5 years of follow-up, 167 patients (25.9%) received TNFi (Table 1).

Table 1 Baseline characteristics of 701 patients in early arthritis (EA) and 646 patients in early inflammatory back pain (IBP) patients recruited to observational cohorts

Characteristics	EA population N = 701	Patients fulfilling RA classification criteria N = 568	IBP population N = 646	Patients fulfilling ASAS classification criteria N = 402
Age (years), mean (SD)	48.4 (12.2)	48.9 (12.0)	33.9 (8.7)	31.7 (7.3)
Symptom duration (month), mean (SD)	3.4 (1.7)	3.3 (1.7)	18.2 (10.8)	18.2 (10.8)
Sex, females, N (%)	535 (76.3)	433 (76.2)	355 (55.0)	197 (49.0)
Studies above high school, N (%)	230 (32.8)	180 (31.7)	391 (60.7)	259 (64.4)
Work status: intermediate/high level employment, N (%)	532 (75.9)	434 (76.4)	494 (77.1)	291 (72.9)
Smoking status, yes, N (%)	326 (46.5)	263 (46.3)	225 (35.0)	152 (37.9)
HAQ, mean (SD)	0.98 (0.69)	1.05 (0.69)	0.67 (0.51)	0.57 (0.49)
DAS28-ESR/ASDAS-CRP, mean (SD)	5.12 (1.30)	5.37 (1.23)	2.62 (0.93)	2.61 (0.99)
SF36-PCS, mean (SD)	38.5 (8.5)	37.8 (8.3)	40.2 (9.1)	40.6 (9.0)
SF36-MCS, mean (SD)	39.8 (10.9)	39.5 (10.7)	40.4 (11.2)	41.0(11.4)

DAS28-ESR was applied to EA and ASDAS-CRP was applied to early IBP. All percentages are calculated on available data
 HAQ Health Assessment Questionnaire Disability Index, DAS-28-ESR Disease Activity Score—erythrocyte sedimentation rate, ASDAS-CRP Ankylosing Spondylitis Disease Activity Score—C reactive protein, PCS physical composite score, MCS mental composite score

Patients who were not included in this analysis were similar for early arthritis and for axSpA, had more often studied above high school and had a higher ASDAS-CRP and lower SF36-PCS (data not shown).

**Evolution of HRQoL
 SF-36 PCS and MCS**

At baseline, mean PCS and MCS were respectively 38.5 ± 8.5 and 39.8 ± 10.9 in EA and 40.2 ± 9.1 and 40.4 ± 11.2 in early IBP and were similar for patients fulfilling

classification criteria or not (Table 1). At the group level, over follow-up, HRQoL improved significantly (univariate linear mixed-effect models, $p < 0.001$; t value for MCS 119 and for PCS 139 in EA and for MCS 115 and PCS 130 in early IBP). The assumption of normal distribution of sampled data for linear models was fulfilled. However, this improvement occurred mostly over the first 6 months (Fig. 1 and Additional file 1: Table S1).

Trajectory-based mapping evidenced two trajectories with an improvement over time but mostly over the first

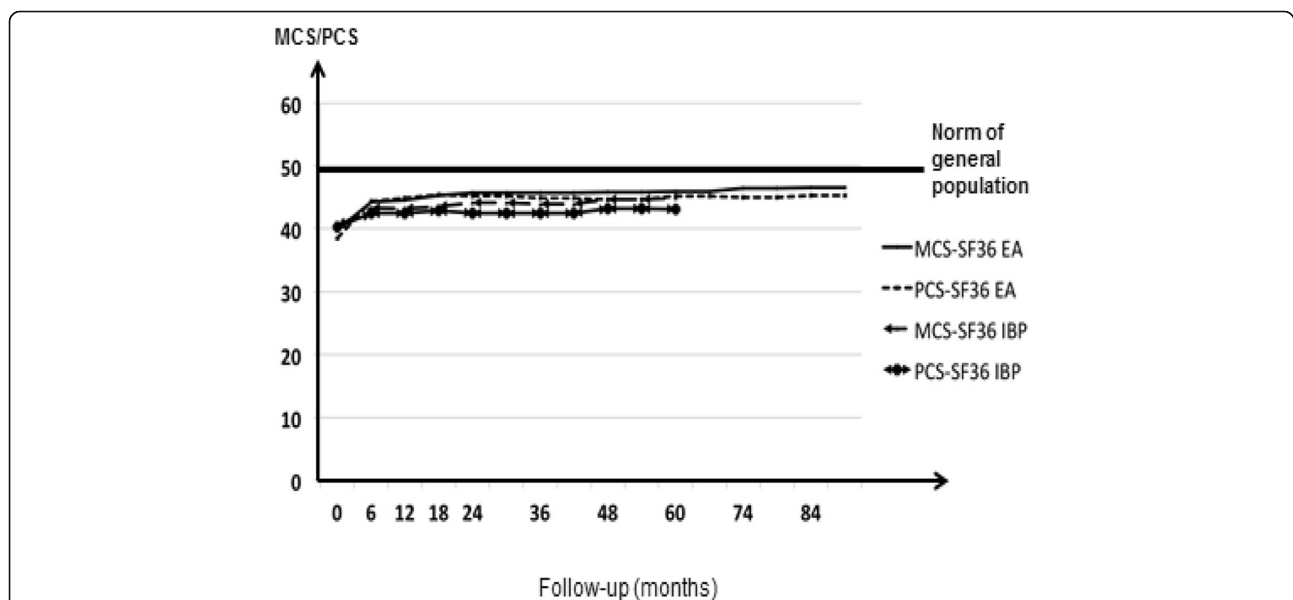
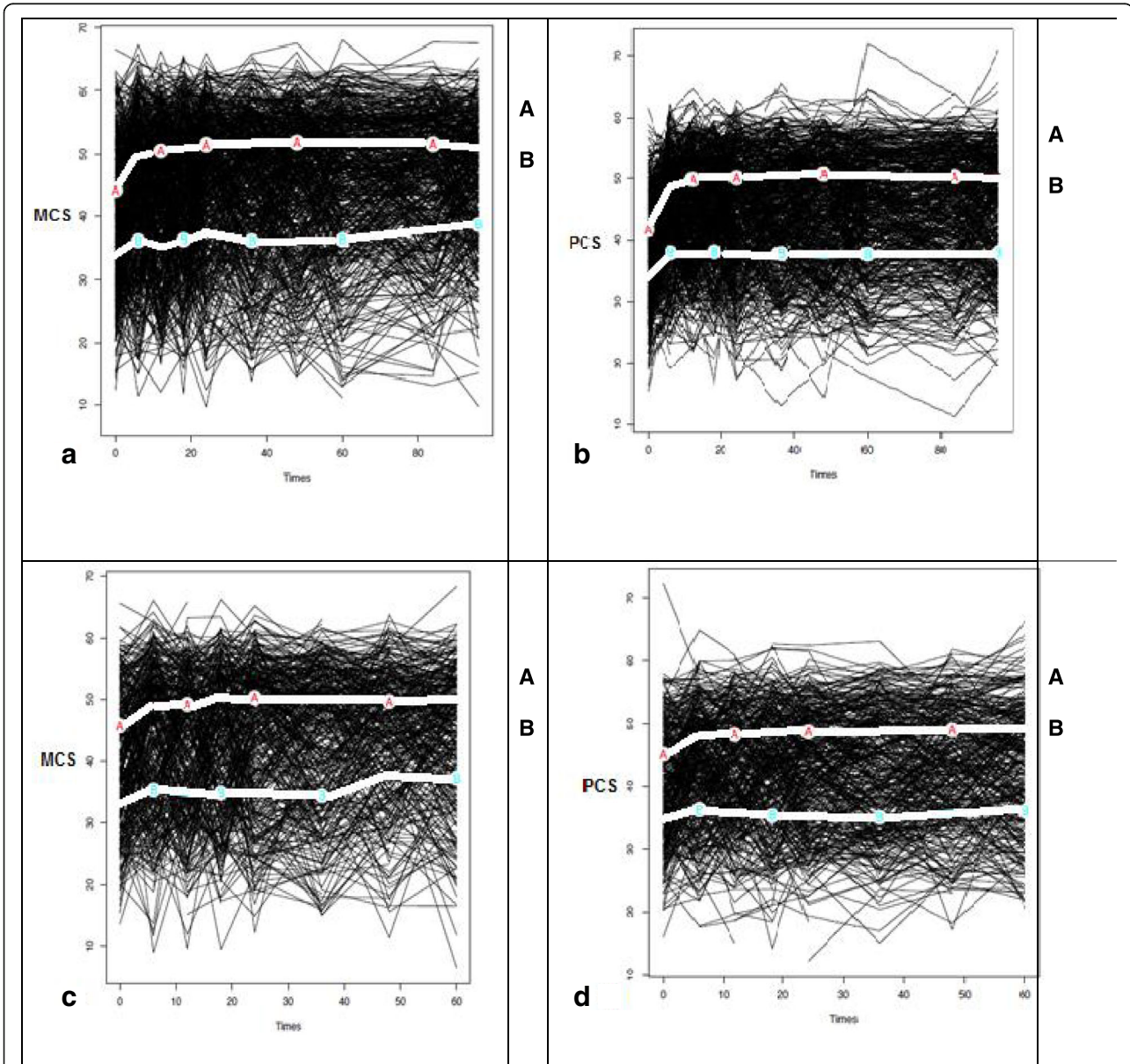


Fig. 1 Changes in SF36-MCS and PCS over follow-up in early arthritis (EA) and early inflammatory back pain (IBP). Lines represent mean SF36-MCS and mean SF36-PCS for EA and IBP; 95% confidence intervals were not represented because they were very small. There was no imputation of missing data; thus, the number of available data is between 696 and 508 according to the assessments for SF-36 in EA and 646 to 422 according to the assessment for SF-36 in IBP

6 months for each group for both mental and physical scores in both diseases (Fig. 2). Trajectory A or the ‘good HRQoL’ trajectory groups correspond in both diseases, to levels of HRQoL close to those of the general population (SF-36 is a norm-based score with US norms of 50). In all, 57.2–60.8% of EA patients and 54.2–58.4% of early IBP patients were in trajectory A. Trajectory B

corresponds to more altered HRQoL (Fig. 2). The 2 trajectories were also evidenced similarly restricting the analysis to patients fulfilling the ACR/EULAR criteria or ASAS classification criteria (data not shown).

Between trajectories, all characteristics at baseline were significantly different ($p < 0.005$), except globally for smoking status and gender with higher complaints



Each black line represent an individual patient. The light lines represent the homogeneous trajectories of group of patients; In the figures a and b, in EA, for MCS, group A includes 60.8% of the all population and group B 39.2%; for PCS, group A includes 57.2% of the all population and group B 42.8%. In the figures c and d, in IBP, for MCS, group A includes 58.4% of the all population and group B 41.6%; for PCS, group A includes 54.2% of the all population and group B 45.8%

Fig. 2 Trajectory-based mapping of HRQoL (MCS and PCS) over 5 to 8 years in patients with early arthritis (EA) (graph a and b) and early IBP (graph c and d). Each black line represents an individual patient. The light lines represent the homogeneous trajectories of group of patients. In the figures a and b, in EA, for MCS, group A includes 60.8% of the all population and group B 39.2%; for PCS, group A includes 57.2% of the all population and group B 42.8%. In the figures c and d, in IBP, for MCS, group A includes 58.4% of the all population and group B 41.6%; for PCS, group A includes 54.2% of the all population and group B 45.8%

and disease activity in the B trajectory (Additional file 2: Table S2).

Subdomains of SF-36

For both diseases, at baseline, all the subdomains of HRQoL were altered and more in EA (Fig. 3 and Additional file 3: Table S3). Over time, all the SF36 subdomains improved (Fig. 3). This improvement occurred mostly over the first 6 months (Additional file 3: Table S3). Domains with the highest improvement in both patients groups were emotional role and physical role, domains with the lowest improvement were general health and mental health (Fig. 3 and Additional file 2: Table S2).

Factors related to SF36-MCS and PCS

In EA, in univariate analysis, worse MCS at baseline, higher symptom duration, intake of DMARDs at baseline and higher DAS28-ESR were associated to better MCS over time. In early IBP, in univariate analysis, the variables associated to better MCS were lower baseline MCS and presence of peripheral arthritis. Demographic

data and disease activity were associated to PCS in both diseases (Table 2).

In multivariate analysis in EA, only worse PCS at baseline was significantly linked to better MCS over time (beta = -0.049). Lower age (beta = -0.0064) and lower PCS score at baseline (beta = -0.041) were significantly linked to better PCS over time. Higher DAS28-ESR, longer studies, baseline DMARDs, higher symptom duration and better MCS score at baseline were linked to better PCS over time (Table 3).

In multivariate analysis, in IBP, apart from baseline HRQoL, no other variable was associated to MCS. Baseline lower ASDAS-CRP, lower age, the absence of peripheral arthritis, non-use of TNFi treatment and better baseline MCS and lower baseline PCS were strongly linked to better PCS over time (Table 3).

For the subgroup of patients fulfilling the ASAS and EULAR/ACR classification criteria, in multivariate analysis, results were globally similar (data not shown).

The variance of PCS explained by ASDAS-CRP and DAS28-ESR was respectively at baseline 27.4% and

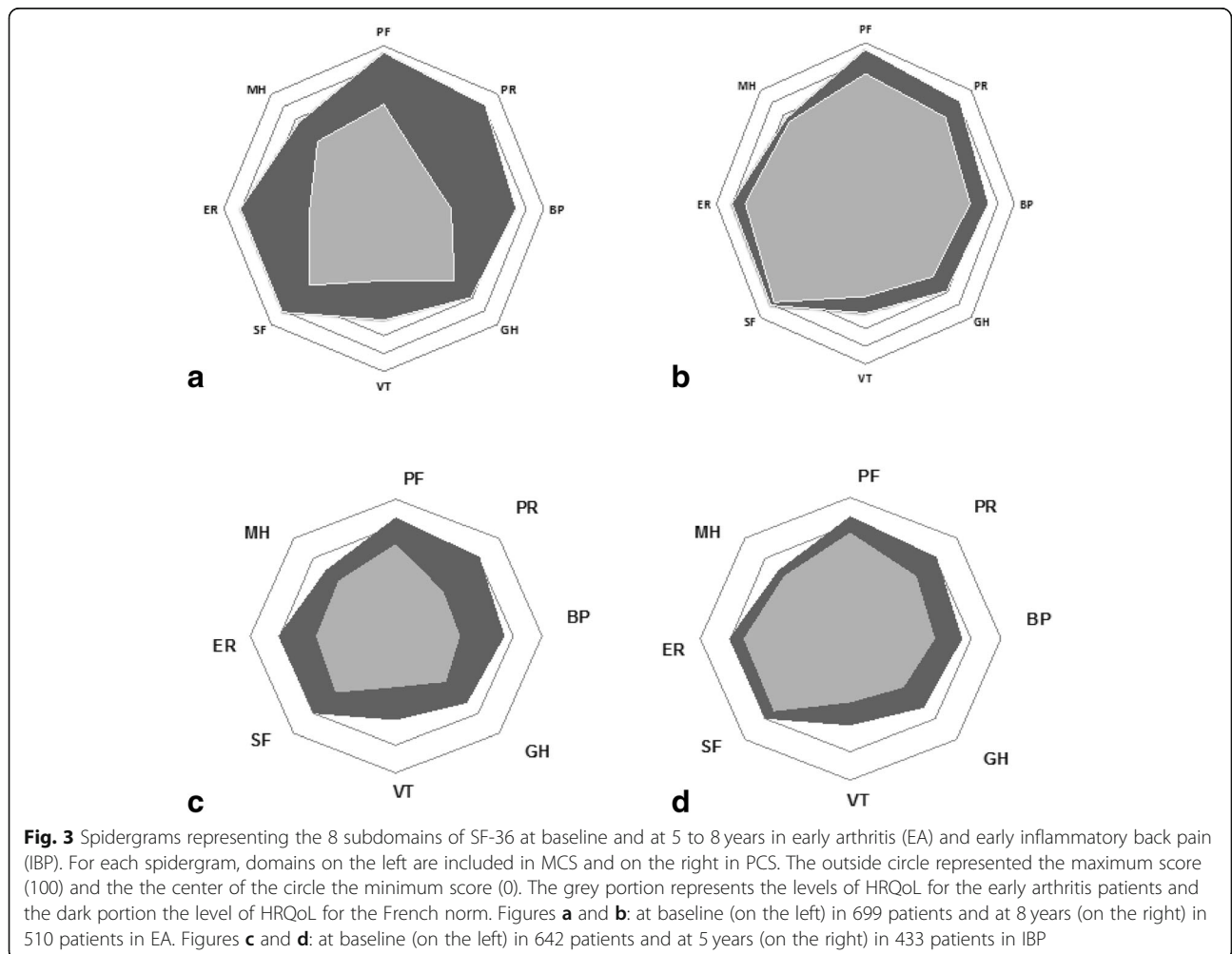


Table 2 Factors related to SF36-MCS and PCS over 5 to 8 years in early arthritis (EA) and early inflammatory back pain (IBP): results of univariate mixed linear models

Characteristics associated to HRQoL	EA		Early IBP	
	MCS beta (p value)	PCS beta (p value)	MCS beta (p value)	PCS beta (p value)
Baseline characteristics				
Age	-0.0049 (0.055)	-0.0086 (0.001)	-0.00031 (0.69)	-0.0017 (0.003)
Gender	-0.0056 (0.93)	+0.041 (0.50)	+0.00075 (0.96)	+0.016 (0.12)
Level of studies	-0.029 (0.66)	+0.20 (0.003)	-0.013 (0.33)	+0.017 (0.11)
Level employment	+0.017(0.82)	+0.12 (0.04)	+0.026 (0.06)	-0.010 (0.32)
Baseline MCS-SF36	-0.041 (< 0.001)	+0.0012 (0.007)	-0.0083 (< 0.001)	+0.0013 (0.004)
Baseline PCS-SF36	-0.0048 (0.19)	-0.038 (< 0.001)	-0.00001 (0.99)	-0.0052 (< 0.0001)
Smoking status	-0.097 (0.11)	-0.049 (0.33)	+0.0058 (0.68)	+0.0077 (0.46)
HLAB27 status	NA	NA	+0.011 (0.42)	-0.0062 (0.54)
Radiological or MRI sacroiliitis	NA	NA	-0.012 (0.39)	+0.016 (0.12)
Symptom duration	+0.0012 (0.04)	+0.0025 (< 0.001)	+0.0062 (0.42)	-0.015 (0.008)
Variables changing over time				
Erosions on hands and/or feet	+0.54 (0.19)	+0.32 (0.36)	NA	NA
Oral corticosteroid	+0.13 (0.10)	+0.20 (0.002)	NA	NA
DMARDs	+0.36 (< 0.001)	+0.61 (< 0.001)	NA	NA
DAS28-ESR/ASDAS-CRP	+0.20 (< 0.001)	+0.27 (< 0.001)	+0.0062 (0.39)	-0.016 (0.0005)
Extra articular manifestations [†]	NA	NA	-0.0037 (0.80)	+0.00001 (1.00)
Peripheral arthritis	NA	NA	+0.029 (0.04)	+0.018 (0.09)
Enthesitis	NA	NA	+0.014 (0.36)	+0.015 (0.19)
TNFi	NA	NA	-0.021 (0.21)	-0.027 (0.03)

DAS28-CRP was applied to EA and ASDAS-CRP to early IBP

MCS mental composite score, PCS physical composite score, ASDAS-CRP Ankylosing Spondylitis Disease Activity Score—C reactive protein, DAS28-ESR Disease Activity Score 28—erythrocyte sedimentation rate, TNFi tumor necrosis factor inhibitor, NA not analysed

[†]Extra-articular manifestations including uveitis, psoriasis or inflammatory bowel disease

34.5% and at last follow-up 9.1% and 43.1% (overall range, 9–43%; 9–47% in early IBP and 34–43% in EA). The variance of MCS explained by ASDAS-CRP and DAS28-ESR was respectively at baseline 14.6% and 6.4% and at last follow-up 17.3% and 0.5% (overall range, 14.6%–17.3% in early IBP and 0.5%–6.4% in EA).

Discussion

This study brings to light important information on HRQoL in EA and early IBP. At disease inception, HRQoL was altered similarly both for mental and physical aspects. Over a period of 5 to 8 years, HRQoL improved mostly over the first 6 months of follow-up then remained mostly unchanged. In EA and in early IBP, 54–61% of patients reached levels of HRQoL close to population norms. Finally, disease activity only partly explained the physical component of HRQoL, with a stronger link in EA.

In these two populations, HRQoL was altered similarly for physical and mental aspects. Compared with the US general population for whom mean levels of PCS and MCS are at 50, mean MCS and PCS were lower in this

population of early IBP and EA, as expected. However, 54–61% of patients (trajectories A) reached levels of HRQoL close to population norms for both MCS and PCS-SF36 and both diseases. The patients in trajectories B were worst physically and mentally. The patients in B trajectories in comparison to the A trajectories were mainly of older age and had lower education level and higher complaints and disease activity in both diseases, mentally and physically (Additional file 2: Table S2). Explanations could include the importance of personality traits as well as disease characteristics.

Comparisons with RA and axSpA studies are difficult. In published observational studies of established RA and axSpA, mean PCS was around 32 and 28–56 respectively, and mean MCS was around 39 and 40–66 respectively [9, 11, 44–47]. Randomized studies usually include different populations [23]. In clinical trials, although MCS is globally similar, PCS is usually worse [15, 48–51]. Thus, globally, HRQoL appears better for physical aspects and similar or worse for mental aspects in the present study of early disease compared with established disease. Our interpretation is that among EA and early

Table 3 Factors related to SF36-MCS and PCS over 5 to 8 years in early arthritis (EA) and early inflammatory back pain (IBP): results of multivariate mixed linear models, after adjustment on baseline HRQoL

Factors associated with worst HRQoL	MCS beta (<i>p</i> value)	PCS beta (<i>p</i> value)
EA		
Age	NS	-0.0064 (0.010)
DAS28-ESR	NS	+0.18 (<0.001)
Levels of studies	NA	+0.26 (0.0001)
DMARDs	NS	+0.42 (<0.001)
Symptom duration	NS	+0.0011 (0.048)
Score MCS at baseline	NS	+0.013 (<0.001)
Score PCS at baseline	-0.049 (0.022)	-0.041 (<0.001)
Early IBP		
ASDAS-CRP	NA	-0.028 (<0.001)
Age	NA	-0.0012 (0.024)
Peripheral arthritis	NS	-0.025 (0.0078)
TNFi	NA	-0.028 (0.013)
Score MCS at baseline	-0.0085 (<0.0001)	+0.0018 (<0.001)
Score PCS at baseline	+0.0018 (0.02)	-0.0055 (<0.001)

In EA, oral corticosteroid, smoking status and erosions were analyzed for MCS but were not significant. Oral corticosteroid was analysed for PCS but were not significant. In early IBP, female gender, lower symptom duration, studies above high school, presence of enthesitis, no radiological or MRI sacroiliitis were analysed for PCS but were not significant. Intermediate or high level employment were not analysed for PCS and were not significant for MCS. Both analyses were adjusted on baseline HRQoL

DAS28-ESR Disease Activity Score—erythrocyte sedimentation rate, ASDAS-CRP Ankylosing Spondylitis Disease Activity Score—C reactive protein, MCS mental composite score, PCS physical composite score, TNFi tumor necrosis factor inhibitor, NA not analysed (*p* value >0.20 in univariate analysis), NS not significant

IBP patients, there is a wide diversity in HRQoL levels. The alteration of HRQoL in both diseases observed here appeared more important for MCS and similar for PCS to that observed in cancer in a 2003 US study [52]. All the subdomains of HRQoL were altered in the present study for both EA and early IBP. Compared with French population subdomain norms, EA patients had the results 12.8 to 48.5 points worse and early IBP patients had the results 20 to 35 points worse except for mental health [33]. In both diseases, the most substantial modifications were seen in social interactions (physical role, emotional role) and in pain. Pain was an expected outcome. Perhaps the young age of the patients explains the high perceived impact on social roles: this is a period of life when both professional and family life demands are consequent.

HRQoL was significantly but only slightly improved over the first 5 to 8 years at the group level. This result was confirmed at the individual level by a robust model (trajectory-based mapping). Trajectory analyses identified two clusters; it should be noted that k-means

trajectory statistics will always identify at least two groups; thus, the interesting results here are that the method did not identify three or more groups [39, 40]. The initial improvement over the first 6 months may reflect the efficacy of disease management. It may also reflect the efficacy of coping mechanisms [14]. Our hypothesis was that HRQoL would improve over the first few years of disease. The improvement seen was only slight. Physical HRQoL may not be too altered in early axSpA and RA because of the lack of structural damage [53]. On the other hand, MCS was more altered perhaps due to the stress of the diagnosis period. Baseline levels of HRQoL were only moderately altered, perhaps because coping mechanisms were in place already at inclusion in DESIR, which happened 18 months after the first symptoms [29]. However, similar levels were observed in EA. The similarities between EA and early IBP could be explained by the lack of sensitivity to change of the SF-36 and also by the fact these two diseases are two inflammatory diseases with similar mechanisms. Furthermore, patients could have more expectations over time: the patient may change his internal standards, and/or conceptualization on the target [54]. Questionnaires reflect both true HRQoL and also how patients situate their level compared to what they would consider as 'the best possible state'. This is sometimes called the 'response shift' [55]. Finally, personality traits may explain an important part of HRQoL, which would contribute to the stability of HRQoL assessment when ASDAS-CRP and DAS28-ESR improve [56, 57]. All these factors may explain the lack of substantial improvements in HRQoL. It is interesting to note the discordance between changes in HRQoL and in disease activity assessed by ASDAS-CRP and DAS28-ESR. Indeed, there is a good agreement in changes of these measures (Table 1). However, the improvement is more important clinically for disease activity than changes of HRQoL. Indeed, in EA, at baseline mean DAS28-ESR was 5.1 (1.3) (high disease activity) and at the last time-point DAS28-ESR was 2.7 (1.3) (moderate disease activity). In early IBP, ASDAS-CRP at baseline was 2.6 (0.9) (high disease activity) and at the final time-point 2.0 (0.9) (moderate disease activity). This suggests the complexity of HRQoL. This may reflect the multifactorial aspects of HRQoL and the link between physical and mental aspects of HRQoL, which varied similarly in the present study. This dissociation could also be explained by a part of circularity in the ASDAS-CRP and DAS28-ESR, which assessed not only objective aspects but also patient perception of disease activity. Moreover, only baseline PCS explained MCS in EA and only PCS and MCS at baseline in early IBP explained MCS over 5 to 8 years. In both diseases, for PCS, ASDAS-CRP/DAS28-ESR was found to be associated, as well as

baseline HRQoL. However, the link between ASDAS-CRP/DAS28-ESR and HRQoL was incomplete. Indeed, ASDAS-CRP/DAS28-ESR explained only PCS (and only partly in particular in early IBP), not MCS over time. This indicates a link between physical aspects of HRQoL and disease activity, whereas mental aspects appeared independent from disease activity [54]. Mental HRQoL is a complex notion, probably encompassing personality traits, psychological distress and personal and social factors which may be only weakly linked to axSpA and RA [56]. Overall, baseline HRQoL was strongly associated to 5 to 8 years' HRQoL, and indeed, it was the only predictor for MCS. This confirms previous studies where baseline levels strongly explained ulterior outcomes [42].

The present study has strengths and limitations. The two cohorts include patients with early rheumatic diseases: ESPOIR patients with definite synovitis for less than 6 months, of whom 81.4% satisfied the RA classification criteria, and DESIR patients with IBP, of whom 62.2% satisfied the ASAS classification criteria for axSpA [36, 37]. This is both a strength and a weakness. This reflects patients seen by rheumatologists at disease inception. Furthermore, analyses were checked on the subgroups of patients satisfying the axSpA and RA classification criteria, and results were similar. Socio-demographic factors associated with HRQoL were analysed; unfortunately, factors such as psychological distress and personality traits were not collected [56, 57]. There were missing data over the 5 to 8 years of follow-up. However, the size of the cohorts allowed full analyses, and for the regressions, linear-mixed models were applied to manage the missing data even if the bias of non-random missing data were persisted. In our study, HRQoL was assessed mainly using the SF36. SF-36 is the most widely used generic HRQoL questionnaire and allowed to compare the changes over time in two different populations, EA and early IBP [58]. However, other scores exist which are more specific to axSpA and RA [14, 40, 43, 59, 60]. Furthermore to assess correctly the evolution of HRQoL, group-level data were compared and trajectory-based mapping was performed [39, 40].

Conclusions

HRQoL is announced as one of the objectives of inflammatory disease management. The present results indicate disjunctions between HRQoL and the immediate target of treatments, which is disease activity [61]. In the light of this, it is interesting to reflect on what falls within the remit of the rheumatologist and the health care team when addressing HRQoL. We argue the multifactorial nature of HRQoL may not make it the

main relevant target, for example, in a treat-to-target approach [61].

In summary, in the era of personalized medicine and tailored treatment strategies, the identification of HRQoL evolution is important to improve patients' management. The drivers of HRQoL in inflammatory rheumatic disorders and specifically the links with disease activity should be further explored.

Additional files

Additional file 1: Table S1. Change of MCS and PCS SF-36 and disease activity over time. (DOCX 55 kb)

Additional file 2: Table S2. Characteristics of patients in each trajectory of 566 patients in early arthritis and 459 patients in early inflammatory back pain patients recruited to observational cohorts. (DOCX 54 kb)

Additional file 3: Table S3. Change of the SF-36 subdomains over 8 years in early arthritis and over 5 years in early inflammatory back pain IBP. (DOCX 55 kb)

Abbreviations

ACR/EULAR: American College of Rheumatology/European League Against Rheumatism; ASAS: Assessment in Spondyloarthritis International Society; ASDAS-CRP: Ankylosing Spondylitis Disease Activity Score—C reactive protein; axSpA: Axial spondyloarthritis; DAS28-ESR: Disease Activity Score 28—erythrocyte sedimentation rate; DESIR: Devenir des Spondylarthropathies Indifférenciées Récentes; DMARDs: Conventional disease-modifying antirheumatic drugs; EA: Early arthritis; ESPOIR: Etude et Suivi des Polyarthrites Indifférenciées Récentes; HAQ: Health-Assessment Questionnaire; HRQoL: Health-related quality of life; IBP: Inflammatory back pain; MCS: Mental composite score; PCS: Physical composite score; RA: Rheumatoid arthritis; SF-36: 36-Item Short Form Survey; TNFi: Tumor necrosis factor inhibitors; US norms: United States norms

Acknowledgements

ESPOIR: The authors thank Nathalie Rincheval for expert monitoring and data management, and all the investigators who recruited and followed the patients: F. Berenbaum, Paris-Saint Antoine; M.C. Boissier, Paris-Bobigny; A. Cantagrel, Toulouse; P. Fardelonne and P. Boumier, Amiens; P. Bourgeois, Paris-La Pitie; R.M. Flipo, Lille; P. Goupille, Tours; F. Liote, Paris-Lariboisiere; X. Le Loet and O. Vittecoq, Rouen; X. Mariette, Paris Bicetre; O. Meyer, Paris Bichat; A. Saraux, Brest; T. Schaefferbeke, Bordeaux; and J. Sibilia, Strasbourg. **DESIR:** We wish to thank the different regional participating centres: Pr Maxime Dougados (Paris-Cochin B), Pr Andre Kahan (Paris-Cochin A), Pr Philippe Dieudé (Paris-Bichat), Pr Bruno Fautrel (Paris-La Pitie-Salpetriere), Pr Francis Berenbaum (Paris-Saint-Antoine), Pr Pascal Claudepierre (Creteil), Pr Maxime Breban (Boulogne-Billancourt), Dr. Bernadette Saint-Marcoux (Aulnay-sous-Bois), Pr Philippe Goupille (Tours), Pr Jean Francis Maillefert (Dijon), Dr. Emmanuelle Denis (Le Mans), Pr Daniel Wendling (Besancon), Pr Bernard Combe (Montpellier), Pr Liana Euler-Ziegler (Nice), Pr Pascal Richette (Paris-Lariboisiere), Pr Pierre Lafforgue (Marseille), Dr. Patrick Boumier (Amiens), Pr Martin Soubrier (ClermontFerrand), Dr. Nadia Mehzen (Bordeaux), Pr Damien Loeuille (Nancy), Pr Rene-Marc Flipo (Lille), Pr Alain Saraux (Brest), Pr Xavier Mariette (LeKremlin-Bicetre), Pr Alain Cantagrel (Toulouse), Pr Olivier Vittecoq (Rouen).

Funding

The DESIR cohort was financially supported by unrestricted grants from both the French Society of Rheumatology and Pfizer-Wyeth Ltd. France. ESPOIR was financially supported by an unrestricted grant from Merck Sharp and Dohme for the first 5 years. Part of the biological database was supported by two additional grants from Institut National de la Santé et de la Recherche Médicale (INSERM). The ESPOIR cohort was also supported by the French Society of Rheumatology, AbbVie, Pfizer and Roche Chugai.

Availability of data and materials

The data are available from the corresponding author and the first author on reasonable request.

Authors' contributions

DPZ participated in the design, performed the statistical analysis and drafted the manuscript. LG conceived of the study, participated in its design and coordination and drafted the manuscript. BG participated in the design of the study, helped to perform the statistical analysis and was involved in critical appraisal of the drafts of this manuscript. AM participated in the design of the study and data acquisition and helped to perform the statistical analysis and to draft the manuscript. CGV helped to draft the manuscript. FG helped to perform the statistical analysis and to analyse the results and was involved in critical appraisal of the drafts of this manuscript. ARW helped to draft the manuscript. MD was involved in critical appraisal of the drafts of this manuscript. BF helped to analyse the results and draft the manuscript. All authors were involved in drafting the article or revising it critically for important intellectual content, and all authors approved the final manuscript.

Ethics approval and consent to participate

these studies fulfilled current good clinical practice, obtained the approval of the appropriate ethical committees, and participants gave their written informed consent. Databases locked in February 2017 for DESIR and June 2017 for ESPOIR were used.

Consent for publication

Not applicable.

Competing interests

L. Gossec received research grants from Pfizer and consulting fees from AbbVie, Bristol-Myers Squibb, Celgene, Janssen, Novartis, Pfizer, Roche, and UCB. A. Molto received research grants from Pfizer, UCB, and Merck and consulting fees from AbbVie, Bristol-Myers Squibb, Janssen, Novartis, Pfizer, and UCB. F. Guillemin received research grants from his institution, Genevrier, Sanofi. B. Fautrel received consulting fees from AbbVie, Biogen, BMS, Celgene, Janssen, Lilly, Medac, MSD, NORDIC Pharma, Novartis, Pfizer, Roche, Sanofi-Aventis, SOBI, and UCB. The other authors declare that they have no competing interests.

Publisher's Note

Springer Nature remains neutral with regard to jurisdictional claims in published maps and institutional affiliations.

Author details

¹Sorbonne Université, Institut Pierre Louis d'Epidémiologie et de Santé Publique, GRC-UPMC 08 (EEMOIS), Paris, France. ²Department of rheumatology, AP-HP, Pitié Salpêtrière Hospital, Paris, France. ³Department of Biostatistics, Public Health and Medical Information, AP-HP, Pitié Salpêtrière Hospital, Paris, France. ⁴Paris Descartes University, Department of Rheumatology- HôpitalCochin, Paris, France. ⁵INSERM (U1153): Clinical epidemiology and biostatistics, PRES Sorbonne Paris- Cité, Paris, France. ⁶Nîmes University Hospital, Department of Rheumatology, EA 2415, University of Montpellier, 30029 Nîmes, France. ⁷Université de Lorraine, EA 4360 APEMAC and Inserm CIC, 1433 Epidémiologie clinique, CHRU de Brabois, Nancy, France. ⁸CHU de Toulouse, Hôpital Pierre-Paul Riquet, Toulouse, France. ⁹UMR1027, Inserm, Faculté de Médecine, Université Paul Sabatier, Toulouse, France. ¹⁰Hôpital Pitié-Salpêtrière, Service de Rhumatologie, 47-83, boulevard de l'Hôpital, 75013 Paris, France.

Received: 9 August 2018 Accepted: 4 February 2019

Published online: 19 February 2019

References

- Megari K. Quality of life in chronic disease patients. *Health Psychol Res.* 2013;1(3):e27.
- Hand C. Measuring health-related quality of life in adults with chronic conditions in primary care settings. *Can Fam Physician.* 2016;62(7):e375–83.
- WHOQOL Group. The World Health Organization Quality of Life assessment (WHOQOL): position paper from the World Health Organization. *Soc Sci Med.* 1995;41(10):1403–9.
- Solomon DH, Bitton A, Katz JN, Radner H, Brown EM, Fraenkel L. Review: treat to target in rheumatoid arthritis: fact, fiction, or hypothesis? *Arthritis Rheumatol.* 2014;66:775–82.
- van der Heijde D, Ramiro S, Landewé R, Baraliakos X, Van den Bosch F, Sepriano A, et al. Update of the ASAS-EULAR management recommendations for axial spondyloarthritis. *Ann Rheum Dis.* 2016;2017(76):978–91.
- Daïen C, Hua C, Gaujoux-Viala C, Cantagrel A, Dubremetz M, Dougados M, et al. Update of French Society for Rheumatology Recommendations for Managing Rheumatoid Arthritis. *Joint Bone Spine.* 2018; (online first).
- Wendling D, Lukas C, Prati C, Claudepierre P, Gossec L, Goupille P, et al. 2018 update of French Society for Rheumatology (SFR) recommendations about the everyday management of patients with spondyloarthritis. *Joint Bone Spine.* 2018;85(3):275–84.
- Lins L, Carvalho FM. SF-36 total score as a single measure of health-related quality of life: Scoping review. *SAGE Open Med.* 2016;4(4):2050312116671725.
- Salaffi F, Carotti M, Gasparini S, Intorcchia M, Grassi W. The health-related quality of life in rheumatoid arthritis, ankylosing spondylitis, and psoriatic arthritis: a comparison with a selected sample of healthy people. *Health Qual Life Outcomes.* 2009;7:25.
- van der Heijde D, Dijkmans B, Geusens P, Sieper J, DeWoody K, Williamson P, et al. Efficacy and safety of infliximab in patients with ankylosing spondylitis: results of a randomized, placebo-controlled trial (ASSERT). *Arthritis Rheum.* 2005;52:582–91.
- Singh JA, Stand V. Spondyloarthritis is associated with poor function and physical health-related quality of life. *J Rheumatol.* 2009;36(5):1012–20.
- Strand V, Sharp V, Koenig AS, Park G, Shi Y, Wang B, et al. Comparison of health-related quality of life in rheumatoid arthritis, psoriatic arthritis and psoriasis and effects of etanercept treatment. *Ann Rheum Dis.* 2012;71:1143–50.
- Gerhold K, Richter A, Schneider M, Bergerhausen HJ, Demary W, Liebhaber A, et al. Health-related quality of life in patients with long-standing rheumatoid arthritis in the era of biologics: data from the German biologics register RABBIT. *Rheumatology (Oxford).* 2015;54(10):1858–66.
- Peláez-Ballestas I, Boonen A, Vázquez-Mellado J, Reyes-Lagunes I, Hernández-Garduño A, Goicochea MV, et al. Coping strategies for health and daily-life stressors in patients with rheumatoid arthritis, ankylosing spondylitis, and gout: STROBE-compliant article. *Medicine (Baltimore).* 2015; 94:e600.
- Scott IC, Ibrahim F, Lewis CM, Scott DL, Strand V. Impact of intensive treatment and remission on health-related quality of life in early and established rheumatoid arthritis. *RMD Open.* 2016;2(2):e000270.
- Heimans L, Wevers-de Boer KV, Koudijs KK, Visser K, Goekoop-Ruiterman YP, Harbers JB, et al. Health-related quality of life and functional ability in patients with early arthritis during remission steered treatment: results of the IMPROVED study. *Arthritis Res Ther.* 2013;15(5):R173.
- da Mota LM, Laurindo IM, dos Santos Neto LL. Prospective evaluation of the quality of life in a cohort of patients with early rheumatoid arthritis. *Rev Bras Reumatol.* 2010;50:249–61.
- Utelata T, Hannonen P, Kautiainen H, Hakala M, Häkkinen A. Sustained improvement of health-related quality of life in patients with early rheumatoid arthritis: a ten-year follow-up study. *Clin Exp Rheumatol.* 2011; 29:65–71.
- Ertenli I, Ozer S, Kiraz S, Apras SB, Akdogan A, Karadag O, et al. Infliximab, a TNF- α antagonist treatment in patients with ankylosing spondylitis: the impact on depression, anxiety and quality of life level. *Rheumatol Int.* 2012; 32(2):323.
- van der Heijde D, Breban M, Halter D, DiVittorio G, Bratt J, Cantini F, et al. Maintenance of improvement in spinal mobility, physical function and quality of life in patients with ankylosing spondylitis after 5 years in a clinical trial of adalimumab. *Rheumatology (Oxford).* 2015;54:1210–9.
- van der Heijde D, Deodhar A, Braun J, Mack M, Hsu B, Gathany TA, et al. The effect of golimumab therapy on disease activity and health-related quality of life in patients with ankylosing spondylitis: 2-year results of the GO-RAISE trial. *J Rheumatol.* 2014;41:1095–103.
- Davis JC, van der Heijde D, Dougados M, Woolley JM. Reductions in health-related quality of life in patients with ankylosing spondylitis and improvements with etanercept therapy. *Arthritis Rheum.* 2005;53:494–501.
- Sokka T, Pincus T. Most patients receiving routine care for rheumatoid arthritis in 2001 did not meet inclusion criteria for most recent clinical trials

- or american college of rheumatology criteria for remission. *J Rheumatol*. 2003;30:1138–46.
24. Boonen A, Sieper J, van der Heijde D, Dougados M, Bukowski JF, Valluri S, et al. The burden of non-radiographic axial spondyloarthritis. *Semin Arthritis Rheum*. 2015;44:556–62.
 25. Ishida M, Kuroiwa Y, Yoshida E, Sato M, Krupa D, Henry N, Ikeda K, Kaneko Y. Residual symptoms and disease burden among patients with rheumatoid arthritis in remission or low disease activity: a systematic literature review. *Mod Rheumatol*. 2018;28(5):789–99.
 26. Prevoe ML, van 't Hof MA, Kuper HH, van Leeuwen MA, van de Putte LB, van Riel PL. Modified disease activity scores that include twenty-eight-joint counts. Development and validation in a prospective longitudinal study of patients with rheumatoid arthritis. *Arthritis Rheum*. 1995;38:44–8.
 27. Machado P, Landewé R, Lie E, Kvien TK, Braun J, Baker D, et al. Ankylosing Spondylitis Disease Activity Score (ASDAS): defining cut-off values for disease activity states and improvement scores, Assessment of SpondyloArthritis international Society. *Ann Rheum Dis*. 2011;70:47–53.
 28. Combe B, Benessiano J, Berenbaum F, Cantagrel A, Daurès JP, Dougados M, et al. The ESPOIR cohort : a ten-year follow-up of early arthritis in France. Methodology and baseline characteristics of the 813 included patients. *Joint Bone Spine*. 2007;74:440–5.
 29. Dougados M, Etcheto A, Molto A, Alonso S, Bouvet S, Daurès JP, et al. Clinical presentation of patients suffering from recent onset chronic inflammatory back pain suggestive of spondyloarthritis: the DESIR cohort. *Joint Bone Spine*. 2015;82:345–51.
 30. https://www.rand.org/health-care/surveys_tools/mos/36-item-short-form.html. Accessed Feb 2019.
 31. Ware JE Jr, Sherbourne CD. The MOS 36-item short-form health survey (SF-36). I. Conceptual framework and item selection. *Med Care*. 1992;30:473–83.
 32. Strand V, Loftis JE. Response to M. Boers' concerns about spydergrams. *J Clin Epidemiol*. 2013;66(3):247–52.
 33. Leplège A, Ecosse E, Verdier A, Perneger TV. The French SF-36 health survey: translation, cultural adaptation and preliminary psychometric evaluation. *J Clin Epidemiol*. 1998;51:1013–23.
 34. Ware JE Jr, Snow KK, Kosinski M. SF-36 health survey: manual and interpretation guide. Lincoln (RI): Quality Metric Inc.; 2000.
 35. Bruce B, Fries JF. The Health Assessment Questionnaire (HAQ). *Clin Exp Rheumatol*. 2005;23:14–8.
 36. Aletaha D, Neogi T, Silman AJ, Funovits J, Felson DT, Bingham CO 3rd, et al. 2010 rheumatoid arthritis classification criteria: an American College of Rheumatology/European League Against Rheumatism collaborative initiative. *Arthritis Rheum*. 2010;62:2569–81.
 37. Rudwaleit M, van der Heijde D, Landewé R, Listing J, Akkoc N, Brandt J, et al. The development of Assessment of SpondyloArthritis international Society classification criteria for axial spondyloarthritis (part II): validation and final selection. *Ann Rheum Dis*. 2009;68:777–83.
 38. Shek DT, Ma CM. Longitudinal data analyses using linear mixed models in SPSS: concepts, procedures and illustrations. *Sci World J*. 2011;5(11): 42–76 40.
 39. Genolini C, Falissard B. Kml: k-means for longitudinal data. *Comput Stat*. 2010;25:317–28.
 40. Genolini C, Alacoque X, Sentenac M, Arnaud C. kml and kml3d : R Packages to cluster Longitudinal Data, *Journal of statistical software*. 2017;65. <https://doi.org/10.18637/jss.v065.i04>.
 41. Chiolerio A, Paradis G, Rich B, Hanley JA. Assessing the relationship between the baseline value of a continuous variable and subsequent change over time. *Front Public Health*. 2013;23(1):29.
 42. Molto A, Tezenas du Montcel S, Wendling D, Dougados M, Vanier A, Gossec L. Disease activity trajectories in early axial spondyloarthritis: results from the DESIR cohort. *Ann Rheum Dis*. 2017;76:1036–41.
 43. <https://www.rstudio.com/products/rstudio/download/>. Accessed July 2017.
 44. Haywood KL, Garatt AM, Dziedzic KK, Dawes PT. Generic measures of health related quality of life in ankylosing spondylitis: reliability, stability and responsiveness. *Rheumatology*. 2002;41:1380–7.
 45. Kiltz U, Baraliakos X, Karakostas P, Igelmann M, Kalthoff L, Klink C, et al. Do patients with non-radiographic axial spondylarthritis differ from patients with ankylosing spondylitis? *Arthritis Care Res (Hoboken)*. 2012;64:1415–22.
 46. Hakkou J, Rostom S, Mengat M, Aissaoui N, Bahiri R, Hajjaj-Hassouni N. Sleep disturbance in Moroccan patients with ankylosing spondylitis: prevalence and relationships with disease-specific variables, psychological status and quality of life. *Rheumatol Int*. 2013;33:285–90.
 47. Chen HH, Chen DY, Chen YM, Lai KL. Health-related quality of life and utility: comparison of ankylosing spondylitis, rheumatoid arthritis, and systemic lupus erythematosus patients in Taiwan. *Clin Rheumatol*. 2017;36:133–42.
 48. Dougados M, Tsai WC, Saaibi DL, Bonin R, Bukowski J, Pedersen R, et al. Evaluation of health outcomes with etanercept treatment in patients with early nonradiographic axial spondyloarthritis. *J Rheumatol*. 2015;42:1835–41.
 49. Osterhaus JT, Purcaru O. Discriminant validity, responsiveness and reliability of the arthritis-specific Work Productivity Survey assessing workplace and household productivity within and outside the home in patients with axial spondyloarthritis, including nonradiographic axial spondyloarthritis and ankylosing spondylitis. *Arthritis Res Ther*. 2014;16(4):R164.
 50. Deodhar AA, Dougados M, Baeten DL, Cheng-Chung Wei J, Geusens P, Readie A, et al. Effect of secukinumab on patient-reported outcomes in patients with active ankylosing spondylitis: a phase III randomized trial (MEASURE 1). *Arthritis Rheumatol*. 2016;68:2901–10.
 51. Damjanov N, Shehhi WA, Huang F, Kotak S, Burgos-Vargas R, Shirazy K, et al. Assessment of clinical efficacy and safety in a randomized double-blind study of etanercept and sulfasalazine in patients with ankylosing spondylitis from Eastern/Central Europe, Latin America, and Asia. *Rheumatol Int*. 2016; 36:643–51.
 52. Baker F, Haffer SC, Denniston M. Health-related quality of life of cancer and non cancer patients Medicare managed care. *Cancer*. 2003;97:674–81.
 53. Devauchelle-Pensec V, Saraux A, Alapetite S, Colin D, Le Goff P. Diagnostic value of radiographs of the hands and feet in early rheumatoid arthritis. *Joint Bone Spine*. 2002;69:434–41.
 54. Fernández-Carballido C, Navarro-Compán V, Castillo-Gallego C, Castro-Villegas MC, Collantes-Estévez E, de Miguel E, et al. Disease activity as a major determinant of quality of life and physical function in patients with early axial spondyloarthritis. *Arthritis Care Res (Hoboken)*. 2017;69(1):150–5.
 55. Schwartz CE, Andresen EM, Nosek MA, Krahn GL. RRCT Expert Panel on Health Status Measurement. Response shift theory: important implications for measuring quality of life in people with disability. *Arch Phys Med Rehabil*. 2007;88:529–36.
 56. Kreis S, Molto A, Bailly F, Dadoun S, Fabre S, Rein C, et al. Relationship between optimism and quality of life in patients with two chronic rheumatic diseases: axial spondyloarthritis and chronic low back pain: a cross sectional study of 288 patients. *Health Qual Life Outcomes*. 2015;13:78.
 57. Fabre S, Molto A, Kreis S, Hudry C, Fautrel B, Pertuiset E, et al. Is the widely-used score in axial spondyloarthritis, Bath Ankylosing Spondylitis Disease Activity Index, influenced by patients' optimism? A cross-sectional study of 206 patients. *Joint Bone Spine*. 2017;84(5):629–30.
 58. Wells GA, Russell AS, Haraoui B, Bissonnette R, Ware CF. Validity of quality of life measurement tools—from generic to disease-specific. *J Rheumatol Suppl*. 2011;88:2–6.
 59. Doward LC, Spoorenberg A, Cook SA, Whalley D, Helliwell PS, Kay LJ, et al. Development of the ASQoL: a quality of life instrument specific to ankylosing spondylitis. *Ann Rheum Dis*. 2003;62:20–6.
 60. Kiltz U, van der Heijde D, Boonen A, Cieza A, Stucki G, Khan MA, et al. Development of a health index in patients with ankylosing spondylitis (ASAS HI): final result of a global initiative based on the ICF guided by ASAS. *Ann Rheum Dis*. 2015;74:830–5.
 61. Smolen JS, Schöls M, Braun J, Dougados M, FitzGerald O, Gladman DD, et al. Treating axial spondyloarthritis and peripheral spondyloarthritis, especially psoriatic arthritis, to target: 2017 update of recommendations by an international task force. *Ann Rheum Dis*. 2018;77:3–17.