

RESEARCH ARTICLE

Open Access



# Urinary activated leukocyte cell adhesion molecule as a novel biomarker of lupus nephritis histology

Huihua Ding<sup>1†</sup>, Cheng Lin<sup>1†</sup>, Jingyi Cai<sup>1</sup>, Qiang Guo<sup>1</sup>, Min Dai<sup>1</sup>, Chandra Mohan<sup>2\*†</sup>  and Nan Shen<sup>1,3,4,5,6,7\*†</sup> 

## Abstract

**Background:** Lupus nephritis (LN) is one of the most severe complications of SLE patients. We aim to validate urinary ALCAM as a biomarker in predicting renal disease histopathology in a Chinese lupus cohort.

**Methods:** In this cross-sectional study, a total of 256 patients and controls were recruited. Urinary levels of ALCAM were determined by ELISA. Renal histopathology was reviewed by an experienced renal pathologist.

**Results:** Urinary ALCAM levels were significantly increased in active LN patients when compared to active SLE patients without renal involvement ( $p < 0.001$ ), inactive LN patients ( $p = 0.023$ ), inactive SLE patients without renal involvement ( $p < 0.001$ ), and healthy controls ( $p < 0.001$ ). Correlation analysis revealed a positive correlation between urinary ALCAM and general disease activity—SLEDAI score ( $r = 0.487$ ,  $p < 0.001$ ), as well as renal disease activity—rSLEDAI ( $r = 0.552$ ,  $p < 0.001$ ) and SLICC RAS ( $r = 0.584$ ,  $p < 0.001$ ). Urinary ALCAM also correlated with lab parameters including 24-h urine protein, hemoglobin, and complement 3. Moreover, urinary ALCAM levels were significantly increased in class III and IV (proliferative) LN as compared to those in class V (membranous) LN. It outperformed conventional biomarkers (anti-dsDNA antibody, C3, C4, proteinuria) in discriminating the two groups of LN. On renal histopathology, urinary ALCAM levels correlated positively with activity index ( $r = 0.405$ ,  $p < 0.001$ ) but not chronicity index ( $r = 0.079$ ,  $p = 0.448$ ).

**Conclusion:** Urinary ALCAM is a potential biomarker for predicting renal pathology activity in LN and may serve as a valuable surrogate marker of renal histopathology.

**Keywords:** Lupus nephritis, Urinary biomarker, ALCAM, Renal histopathology, Activity index, Chronicity index

## Introduction

Systemic lupus erythematosus (SLE) is an autoimmune disease that has a wide impact on multiple organs, including the kidneys. Approximately 40–70% of SLE patients develop lupus nephritis (LN) during their disease

courses [1]. LN is one of the most common manifestations of SLE and an important driver of mortality and morbidity in SLE [2]. Ten to 30% of patients with severe LN progress to end-stage renal disease within 15 years despite aggressive immunosuppressive therapy [3]. Currently, renal biopsy remains the gold standard for the diagnosis and management of LN. Although it is essential for adequate diagnosis, determining a treatment regimen, and predicting prognosis in LN patients, the invasive nature and associated risks have limited its use, especially during follow-up. Conventional biomarkers, such as anti-double-stranded DNA (dsDNA) antibodies

\* Correspondence: [cmohan@central.uh.edu](mailto:cmohan@central.uh.edu); [nanshensibs@gmail.com](mailto:nanshensibs@gmail.com)

<sup>†</sup>Huihua Ding, Cheng Lin, Chandra Mohan and Nan Shen contributed equally to this work.

<sup>2</sup>Department of Biomedical Engineering, University of Houston, 3517 Cullen Blvd, Room 2027, Houston, TX 77204-5060, USA

<sup>1</sup>Department of Rheumatology, Shanghai Institute of Rheumatology, Renji Hospital, Shanghai Jiao Tong University School of Medicine, 145 Shandong (M) Rd, Shanghai 200001, China

Full list of author information is available at the end of the article



© The Author(s). 2020 **Open Access** This article is licensed under a Creative Commons Attribution 4.0 International License, which permits use, sharing, adaptation, distribution and reproduction in any medium or format, as long as you give appropriate credit to the original author(s) and the source, provide a link to the Creative Commons licence, and indicate if changes were made. The images or other third party material in this article are included in the article's Creative Commons licence, unless indicated otherwise in a credit line to the material. If material is not included in the article's Creative Commons licence and your intended use is not permitted by statutory regulation or exceeds the permitted use, you will need to obtain permission directly from the copyright holder. To view a copy of this licence, visit <http://creativecommons.org/licenses/by/4.0/>. The Creative Commons Public Domain Dedication waiver (<http://creativecommons.org/publicdomain/zero/1.0/>) applies to the data made available in this article, unless otherwise stated in a credit line to the data.

and complement levels, lack sensitivity and specificity in the diagnosis of LN or in the assessment of renal pathology [4, 5]. Thus, there is an unmet need for non-invasive biomarkers to assess renal histology, predict renal prognosis, and ultimately guide the treatment of LN.

High-throughput proteomics-based approaches have provided an efficient way for screening potential biomarkers worthy of further validation. Our preliminary aptamer-based proteomic screening study identified several novel urinary biomarkers for active LN [6]. Among these proteins, activated leukocyte cell adhesion molecule (ALCAM or CD166) turned out to be a promising biomarker for LN. ALCAM is a cell surface glycoprotein which belongs to the immunoglobulin super family [7]. Soluble ALCAM in body fluids is produced through proteolytic cleavage by ADAM17 or alternative splicing [8, 9]. It plays an important role in T cell activation and immune cell adhesion and migration through its interaction with CD6 [10, 11]. A microarray study of glomeruli from MRL/lpr mice revealed increased ALCAM gene expression in the kidneys of mice with LN [12]. The role of ALCAM as a biomarker in renal disease was recently reported in type 2 diabetic nephropathy [13]. In this study, we aim to further validate the performance of urinary ALCAM as a biomarker in assessing disease activity and renal histopathology in a Chinese LN cohort.

## Methods

### Study subjects

A total of 96 biopsy-proven active LN, 59 active SLE without LN, 10 inactive LN patients, 63 inactive SLE patients without renal involvement, and 28 age- and gender-matched healthy controls were recruited. All subjects were of Chinese ethnicity. All SLE patients fulfilled the 1997 revised American College of Rheumatology (ACR) classification criteria for SLE or 2012 SLICC criteria for SLE [14]. For active LN patients, all samples were collected at the time of renal biopsy. Detailed demographic and clinical characteristics are summarized in Table 1.

### Disease assessment

Systemic Lupus Erythematosus Disease Activity Index (SLEDAI) (version SLEDAI-2k) [15] and renal SLEDAI (refers to the total score of the four kidney-related parameters in SLEDAI) were calculated based upon the review of patients' medical records and laboratory tests at the time of sample collection, which were used to assess disease activity in SLE patients. SLICC renal activity score (SLICC RAS) was also calculated to assess renal activity in active LN patients. SLICC RAS was calculated as follows: proteinuria 0.5–1 g/day = 3 points, proteinuria > 1–3 g/day = 5 points, proteinuria > 3 g/day = 11 points, urine red blood cell count > 5/hpf = 3 points, and urine

white blood cell count > 5/hpf = 1 point [15]. Renal biopsies were reviewed and classified by an experienced renal pathologist who was blinded to the design and results of the study, using the 2004 International Society of Nephrology/Renal Pathological Society (ISN/RPS) classification [16]. Activity index and chronicity index of renal pathology were calculated as described elsewhere [16].

In the current study, SLE patients were divided into four groups (Table 1): active LN group (aLN), active SLE without renal involvement group (aNR), inactive LN patients (iLN), and inactive SLE patients without renal involvement (iNR). The active LN group of patients was renal biopsy-proven LN patients with SLEDAI  $\geq$  6 and rSLEDAI  $\geq$  4 (with biopsy-concurrent urine samples). The active SLE without renal involvement group of patients was defined as SLEDAI  $\geq$  6 and rSLEDAI = 0. Inactive LN patients had a history of LN with SLEDAI  $\leq$  4 and rSLEDAI = 0 at the time of the study. Inactive SLE patients without renal involvement had no history of renal involvement with SLEDAI  $\leq$  4 and rSLEDAI = 0 at the time of the study.

### Measurement of urinary ALCAM

Random urine was collected from each patient in a 50-mL sterile container. Urine samples were mixed well and aliquoted into 5-mL tubes and stored at  $-80^{\circ}\text{C}$  until use. Urine samples were thawed and centrifuged before use. Supernatants were used for the assays. Urinary ALCAM levels were measured in urine samples by ELISA assay using human ALCAM ELISA kit (DY656) from R&D Systems (Minneapolis, MN, USA) according to the manufacturer's instructions. All urine samples were diluted 1:50. Urinary ALCAM levels were normalized by urine creatinine levels. Urine creatinine levels were measured by Creatinine Parameter Assay Kit (KGE005, R&D Systems, Minneapolis, MN).

### Measurement of anti-dsDNA antibody and complement levels

Serum levels of anti-dsDNA antibody were measured using a Farr immunoprecipitation assay (reference range 0–7 IU/mL). Serum levels of complement component 3 (C3; reference range 0.9–1.8 g/L) and complement component 4 (C4; reference range 0.1–0.4 g/L) were measured by turbidimetric immunoassay.

### Statistical analysis

Data are expressed as mean (SD) for continuous variables with normal distribution, median (interquartile range (IQR)) for continuous variables with non-normal distribution, and counts and percentage for dichotomous variables. The Kolmogorov–Smirnov tests were used to test normality of the data. Comparison between two groups was performed using a Student's *t* test when the data were distributed normally.

**Table 1** Demographic and clinical characteristics of study subjects

	SLE				HC
	aLN	aNR	iLN	iNR	
<i>N</i>	96	59	10	63	28
Age (years) (mean ± SD)	34.7 ± 11.7	35.8 ± 15.0	37.2 ± 17.7	43.8 ± 29.8	32.0 ± 11.6
Female, <i>n</i> (%)	91 (94.8%)	55 (93.2%)	9 (90%)	60 (95.2%)	23 (82.1%)
Disease duration (years) (IQR)	4.9 (8.1)	2.1 (11.8)	4.3 (9.7)	2.8 (9.6)	0 (0)
<b>Clinical characteristics, <i>n</i> (%)</b>					
Fever	7 (7.3%)	11 (18.6%)	0 (0%)	10 (15.8%)	N/A
Lymphadenopathy	3 (3.1%)	2 (3.4%)	0 (0%)	1 (1.6%)	N/A
Malar rash	15 (15.6%)	14 (23.7%)	2 (20%)	7 (11.1%)	N/A
Mucosal ulceration	2 (2.1%)	3 (5.1%)	0 (0%)	1 (1.6%)	N/A
Alpecia	5 (5.2%)	6 (10.2%)	0 (0%)	1 (1.6%)	N/A
Vasculitis	6 (6.3%)	5 (8.5%)	0 (0%)	1 (1.6%)	N/A
Raynaud's phenomenon	3 (3.1%)	1 (1.7%)	1 (10%)	1 (1.6%)	N/A
NPSLE	0 (0%)	6 (10.2%)	0 (0%)	1 (1.6%)	N/A
Myositis	0 (0%)	1 (1.7%)	0 (0%)	0 (0%)	N/A
Arthralgia/arthritis	5 (5.2%)	13 (22.0%)	0 (0%)	3 (4.8%)	N/A
Endocarditis	9 (9.4%)	4 (6.8%)	2 (20%)	2 (3.2%)	N/A
PAH	3 (3.1%)	8 (13.6%)	1 (10%)	2 (3.2%)	N/A
ILD	3 (3.1%)	3 (5.1%)	1 (10%)	2 (3.2%)	N/A
Pleural effusion	4 (4.2%)	1 (1.7%)	0 (0%)	4 (6.3%)	N/A
Leukocytopenia	10 (10.4%)	17 (28.8%)	0 (0%)	6 (9.5%)	N/A
Hemolytic anemia	0 (0%)	2 (3.4%)	0 (0%)	1 (1.6%)	N/A
Thrombocytopenia	6 (6.3%)	14 (23.7%)	1 (10%)	8 (12.7%)	N/A
Gastrointestinal vasculitis	0 (0%)	0 (0%)	3 (30%)	3 (4.8%)	N/A
rSLEDAI, median (IQR)	8 (8)	0 (0)	0 (0)	0 (0)	N/A
SLEDAI, median (IQR)	12 (8)	8 (6)	4 (3)	4 (2)	N/A
<b>Laboratory tests, median (IQR)</b>					
24-h urine protein (g/24 h)	3.0 (4.4)	0.2 (0.2)	0.4 (0.7)	0.1 (0.1)	N/A
ANA positive/tested	82/82	52/52	8/8	58/58	N/A
C3 (g/L)	0.57 (0.39)	0.60 (0.37)	0.70 (0.67)	0.77 (0.47)	N/A
C4 (g/L)	0.10 (0.08)	0.08 (0.11)	0.14 (0.1)	0.14 (0.13)	N/A
dsDNA (IU/mL)	25.67 (27.10)	28.56 (26.17)	13.15 (27.85)	25.07 (45.31)	N/A
<b>Renal pathology (ISN/RPS classification), <i>n</i> (%)</b>					
Class I	0 (0%)	N/A	N/A	N/A	N/A
Class II	1 (1.0%)	N/A	N/A	N/A	N/A
Class III/III + V	20 (20.8%)	N/A	N/A	N/A	N/A
Class IV/IV + V	54 (56.3%)	N/A	N/A	N/A	N/A
Class V	21 (21.9%)	N/A	N/A	N/A	N/A
Class VI	0 (0%)	N/A	N/A	N/A	N/A
<b>Comorbidity, <i>n</i> (%)</b>					
RA	0 (0%)	0 (0%)	0 (0%)	1 (1.6%)	N/A
SS	2 (2.1%)	2 (3.4%)	1 (10%)	4 (6.3%)	N/A
APS	0 (0%)	2 (3.4%)	0 (0%)	1 (1.6%)	N/A
Osteoporosis	2 (2.1%)	2 (3.4%)	0 (0%)	2 (3.2%)	N/A

**Table 1** Demographic and clinical characteristics of study subjects (Continued)

	SLE				HC
	aLN	aNR	iLN	iNR	
AVN of femoral head	10 (10.4%)	4 (6.8%)	0 (0%)	1 (1.6%)	N/A
Hypertension	20 (20.8%)	1 (1.7%)	1 (10%)	5 (7.9%)	N/A
Diabetes mellitus	3 (3.1%)	2 (3.4%)	0 (0%)	1 (1.6%)	N/A
Hyperlipidemia	4 (4.2%)	1 (1.7%)	0 (0%)	0 (0%)	N/A

aLN active LN group, aNR active SLE without renal involvement group, iLN inactive lupus nephritis group, iNR inactive SLE without renal involvement group, HC healthy control group, NPSLE neuropsychiatric systemic lupus erythematosus, PAH pulmonary arterial hypertension, ILD interstitial lung disease, SLEDAI Systemic Lupus Erythematosus Disease Activity Index, rSLEDAI renal SLEDAI, ANA anti-nuclear antibody, C3 complement 3, C4 complement 4, RA rheumatoid arthritis, SS Sjogren's syndrome, APS antiphospholipid syndrome, AVN avascular necrosis

Otherwise, a non-parametric Mann–Whitney *U* test was used. We used one-way analysis of variance (ANOVA) to compare three or more groups of normally distributed data, or Kruskal–Wallis *H* test for non-normally distributed data. Pearson's method was used for correlation analysis in continuous and normally distributed data. Otherwise, the non-parametric Spearman's method was used. We generated a receiver operating characteristic (ROC) curve to assess the performance of urinary ALCAM as a marker for lupus nephritis. Optimal cutoff value was calculated using Youden's Index. The sensitivity, specificity, positive predictive value (PPV), and negative predictive value (NPV) were calculated using 2 × 2 contingency tables. A two-tailed *p* value < 0.05 was considered statistically significant. All statistical analyses were performed using SPSS 25 software (IBM Corp., Armonk, New York, USA), and figures were plotted using GraphPad Prism 7.0 (GraphPad Software Inc. La Jolla, CA, USA).

### Ethics and consent

Informed consent was obtained from all the participants before beginning the study. The study was approved by the ethics committee of Renji Hospital, Shanghai Jiao-Tong University School of Medicine, Shanghai, China.

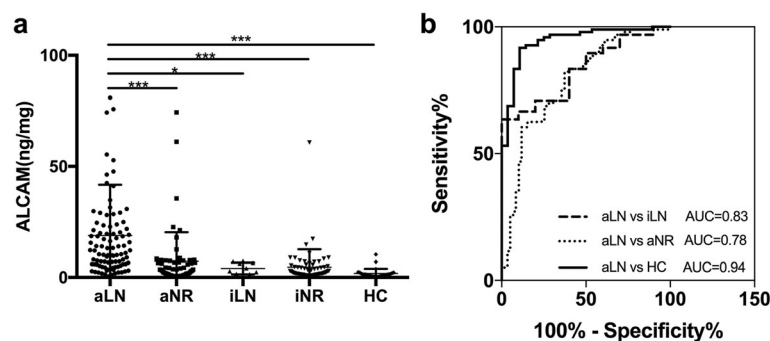
### Results

#### Elevated urinary ALCAM in active lupus nephritis patients

In this cross-sectional study, urinary ALCAM levels were significantly increased in active LN patients (11.50 IQR (16.79) ng/mg) when compared to active SLE patients without renal involvement (3.51 IQR (6.20) ng/mg, *p* < 0.001), inactive LN patients (3.46 IQR (5.14) ng/mg, *p* = 0.023), inactive SLE patients without renal involvement (2.45 IQR (4.04) ng/mg, *p* < 0.001), and healthy controls (1.79 IQR (1.23) ng/mg, *p* < 0.001) (Fig. 1a). In order to assess the diagnostic performance of urinary ALCAM, we further performed the receiver operating curve (ROC) analysis. As indicated in Fig. 1b, the area under the curve (AUC) value was 0.94 (95% CI 0.90 to 0.99; *p* < 0.001) for active LN versus healthy control, 0.78 (95% CI 0.70 to 0.86; *p* < 0.001) for active LN versus active SLE without renal involvement, and 0.83 (95% CI 0.73 to 0.93; *p* < 0.001) for active LN versus inactive LN.

#### Correlation of urinary ALCAM with disease activity and laboratory parameters

To further assess the relationship between urinary ALCAM and disease activity, we performed a correlation analysis between urinary ALCAM levels and disease activity index including SLEDAI for global disease activity



**Fig. 1** Urinary ALCAM levels were elevated in active LN patients. **a** Significant increase of urinary ALCAM in aLN patients (11.50 IQR (16.79) ng/mg) when compared to those in aNR (3.51 IQR (6.20) ng/mg), iLN (3.46 IQR (5.14) ng/mg), iNR (2.45 IQR (4.04) ng/mg), and HC (1.79 IQR (1.23) ng/mg). **b** Receiver operating characteristic curve analysis of urinary ALCAM in discriminating aLN from aNR, iLN, and HC. aLN, active LN; aNR, active SLE without renal involvement; iLN, inactive LN; iNR, inactive SLE without renal involvement; HC, healthy control; AUC, area under the curve. \**p* < 0.05; \*\*\**p* < 0.001

and rSLEDAI and SLICC RAS for renal disease activity. We found a positive correlation between urinary ALCAM with both global disease activity (vs SLEDAI,  $r = 0.487$ ,  $p < 0.001$ ) and renal disease activity (vs rSLEDAI,  $r = 0.552$ ,  $p < 0.001$ ; vs SLICC RAS,  $r = 0.584$ ,  $p < 0.001$ ) (Fig. 2a–c). Besides disease activity, we also explored the correlation between urinary ALCAM and other clinical and laboratory parameters. There was no significant correlation between urinary ALCAM and age, or sex (Supplemental Table 1). No significant correlation was established between urinary ALCAM and any clinical manifestations listed in Table 1 (Supplemental Table 1). However, urinary ALCAM levels correlated positively with 24-h urine protein ( $r = 0.562$ ,  $p < 0.001$ ) and negatively with serum albumin ( $r = -0.347$ ,  $p < 0.001$ ), hemoglobin level ( $r = -0.255$ ,  $p < 0.001$ ), and C3 ( $r = -0.239$ ,  $p < 0.001$ ) (Fig. 2e–g). No significant correlation between urinary ALCAM and serum creatinine (Fig. 2d), serum C4, or anti-dsDNA antibody level was observed.

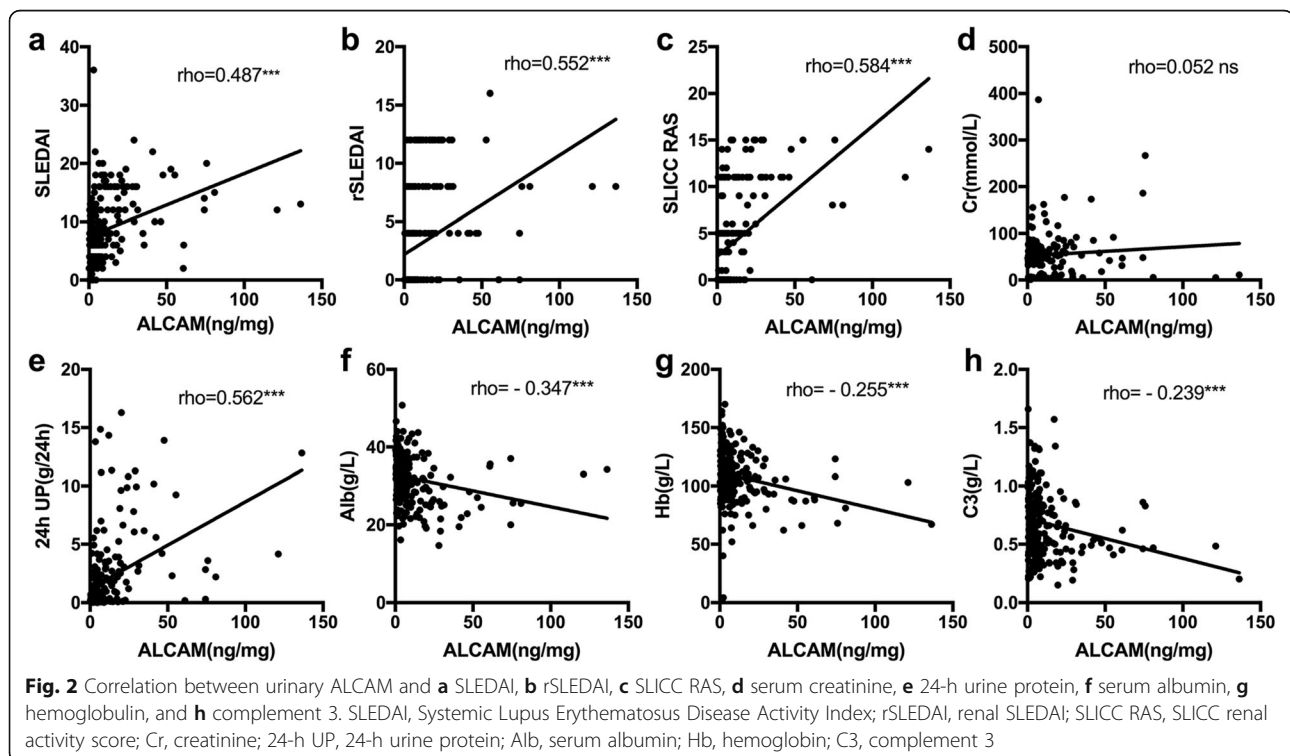
#### Urinary ALCAM as a biomarker of renal pathology and activity index

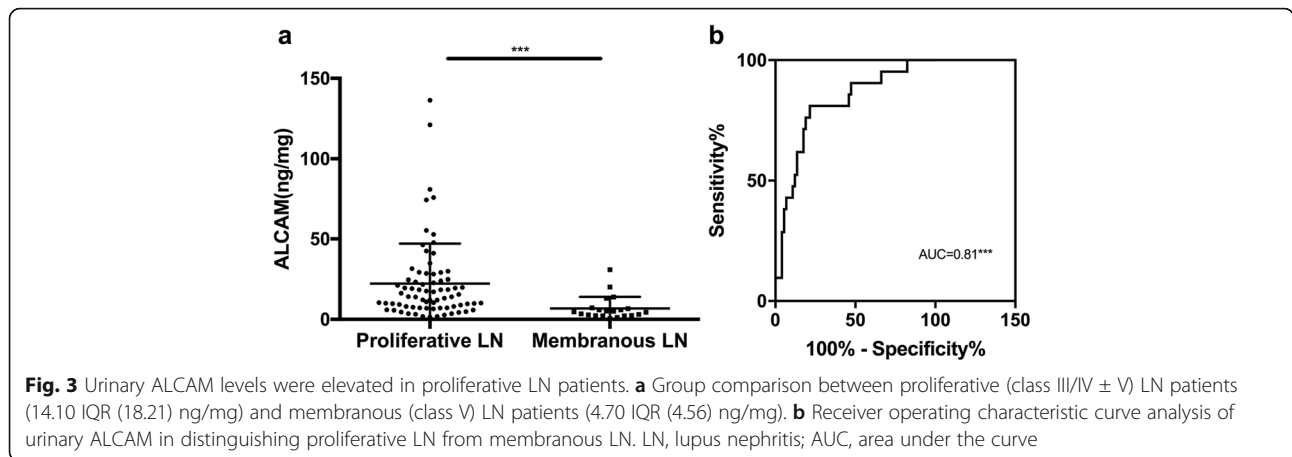
In the current study, all 96 patients in the active LN group had a concurrent renal biopsy at the time the urine samples were collected. This provided a unique opportunity to assess the performance of urinary ALCAM as a biomarker for assessing renal pathology in LN. Among these patients, there were 1 (1.0%) class II LN, 20 (20.8%) class III/III + V LN, 54 (56.3%) class IV/

IV + V LN, and 21 (21.9%) class V. Urinary ALCAM levels were significantly increased in proliferative LN (classes III and IV) (14.10 IQR (18.21) ng/mg) as compared to those in membranous LN (class V) (4.70 IQR (4.56) ng/mg,  $p < 0.001$ ) (Fig. 3a). ROC analysis indicated that urinary ALCAM performed well in discriminating proliferative LN from membranous LN (AUC = 0.81, 95% CI 0.70–0.92,  $p < 0.001$ ) (Fig. 3b), outperforming the traditional markers C3 (AUC = 0.77, 95% CI 0.65–0.89), C4 (AUC = 0.58, 95% CI 0.43–0.72), dsDNA antibody (AUC = 0.58, 95% CI 0.42–0.75), and 24-h urine protein (AUC = 0.59, 95% CI 0.45–0.73) (Table 2). Urinary ALCAM had the highest sensitivity, specificity, PPV, and NPV among these markers (Table 2). More importantly, urinary ALCAM levels correlated positively with AI ( $r = 0.405$ ,  $p < 0.001$ ) but not CI ( $r = 0.08$ ,  $p = 0.448$ ) in renal histopathology, supporting a role for this biomarker in guiding clinical management of LN (Fig. 4a, b).

#### Discussion

In this cross-sectional study, we performed a validation of urinary ALCAM as a potential biomarker for lupus nephritis in a Chinese lupus cohort. We were able to demonstrate that the levels of urinary ALCAM were elevated in active LN patients as compared to active SLE without renal involvement, inactive LN, inactive SLE patients without renal involvement, and healthy controls. It correlated with global disease activity as well as renal disease activity. In the subgroup of biopsy-concurrent





LN patients, urinary ALCAM was significantly increased in patients with proliferative LN compared to those with membranous LN and outperformed conventional biomarkers (anti-dsDNA antibody, C3, C4, 24-h urine protein) in discriminating the two different types of LN. Furthermore, urinary ALCAM levels correlated positively with activity index (AI) in renal histopathology. Taken together, our results suggest urinary ALCAM is a promising biomarker for predicting renal histopathological changes in LN.

ALCAM is a cell surface glycoprotein which is shed into body fluid by proteolytic cleavage [7, 8]. The major function of ALCAM includes mediating immune cell adhesion and migration, promoting T cell activation and proliferation [10, 11, 17]. ALCAM has been increasingly used as a biomarker for the diagnosis, treatment response, and survival prediction in various cancers [18–20]. Recently, a urinary proteome profiling study identified several increased urinary proteins including ALCAM in type 1 diabetes patients as compared to their healthy siblings, alluding to its potential role in the pathogenesis of intermittent hyperglycemia and inflammation [21]. In type 2 diabetic nephropathy, serum ALCAM level and ALCAM expression in the glomeruli were significantly increased, suggesting ALCAM as a potential mediator in the late complications of diabetes in

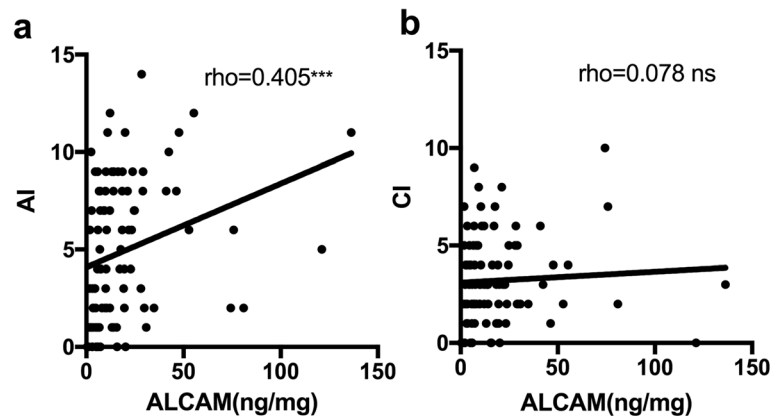
the kidney [22]. The role of ALCAM in lupus nephritis has been only reported in a microarray study of MRL/lpr LN mice, which revealed increased ALCAM expression in the glomeruli [12]. Taken together with our recent aptamer-based proteomic screening study [6], urinary ALCAM warrants further validation as a biomarker in LN.

In the current study, we observed significantly increased urinary ALCAM in active LN patients compared to active SLE patients without renal involvement, indicating an exclusive role for ALCAM in renal involvement of SLE. Correlation analysis revealed that urinary ALCAM levels correlated significantly with both global disease activity and renal disease activity. When we did a subgroup correlation analysis, in active SLE patients without renal involvement, no positive correlation between urinary ALCAM and global disease activity was seen (data not shown), while in the active LN group, there was a significant positive correlation, indicating that the positive correlation between urinary ALCAM and SLEDAI is likely due to the renal components of the SLEDAI score. The positive correlation between urinary ALCAM and 24-h urine protein in the current study also suggests that ALCAM could be an indicator of renal damage in LN. Moreover, urinary ALCAM was not correlated with serum creatinine level in this study,

**Table 2** Diagnostic performance of urinary ALCAM and conventional biomarkers in discriminating proliferative LN from membranous LN

	Cutoff	AUC	95% CI	SEN (%)	SPE (%)	PPV (%)	NPV (%)
ALCAM (ng/mg)	> 12	0.81	0.70–0.92	78.4	81.0	93.5	51.5
dsDNA (IU/mL)	> 16.5	0.58	0.42–0.75	74.5	50.0	79.5	42.9
C3 (g/L)	< 0.73	0.77	0.65–0.89	75.0	73.7	91.5	43.8
C4 (g/L)	< 0.16	0.58	0.43–0.72	79.7	36.8	82.1	33.3
24 h UP (g/24 h)	> 2.8	0.59	0.45–0.73	59.7	61.9	84.3	31.0

AUC area under the curve, CI confidence interval, SEN sensitivity, SPE specificity, PPV positive predictive value, NPV negative predictive value, 24-h UP 24-h urine protein



**Fig. 4** Correlation analysis between urinary ALCAM and **a** AI and **b** CI in renal histopathology. AI, activity index; CI, chronicity index

indicating that the change in urinary ALCAM was not likely to be impacted by renal function. Indeed, the increased urinary ALCAM levels in active LN patients may reflect an increased expression of ALCAM in the kidney, which is in accordance with the microarray study in LN mice [12]. The expression of ALCAM in LN patients' kidneys and its relationship with disease activity is currently under active investigation.

An important finding was that urinary ALCAM was elevated in proliferative LN as compared to membranous LN, rendering ALCAM a potential biomarker to differentiate proliferative LN from membranous LN. This is of clinical importance since the LN guidelines recommend management of LN based on the histopathological classification of LN [23, 24]. In these guidelines, patients with proliferative LN (class III/IV ± V) and membranous LN (class V) are recommended with different induction therapy. The ability of urinary ALCAM to differentiate the two groups of LN patients might be useful in the situation where renal biopsy is contraindicated or when patients are reluctant to do a biopsy. Compared to conventional markers, such as 24-h urine protein, AUC for ALCAM exceeded AUC for proteinuria in distinguishing class III/IV from V. Conventional markers have been examined in various studies as biomarkers of renal disease activity [4, 25, 26]. Here, we show that urinary ALCAM outperforms conventional markers as a biomarker for differentiating class III/IV ± V LN from pure class V LN. More interestingly, urinary ALCAM also correlated with renal pathology activity index but not the chronicity index, which is concordant with the observed correlation with clinical renal disease activity. Activity index in renal histopathology has been documented to be a predictor of long-term renal outcome in different cohorts [27–29]. The correlation between urinary ALCAM and activity index suggests a prediction potential of urinary ALCAM for long-term renal outcome, which warrants further investigation in a longitudinal cohort.

Previous studies have found elevated VCAM-1 and ICAM-1 to be potential biomarkers for active LN [30–38] and elevated VCAM-1 as a predictor for renal pathology activity index in LN [35, 36]. Like ALCAM, both VCAM-1 and ICAM-1 are immunoglobulin superfamily cell adhesion molecules (Ig SF CAMs). Although urinary VCAM-1 and ICAM-1 have been widely validated as biomarkers for LN, the role of urinary ALCAM as a biomarker for LN has been validated only recently by Parodis et al. in a European cohort [38]. In their study, urinary ALCAM was associated with LN history in SLE patients and higher urinary VCAM-1 and ALCAM predicted long-term renal function deterioration. Although the characteristics of patients in their study were considerably different from the current study, both studies confirmed the association of ALCAM and renal affliction. Taken together, one could potentially develop a panel of the abovementioned cell adhesion molecules to predict renal disease activity in LN in future studies. Although previous studies on VCAM-1 and ICAM-1 as biomarkers of LN had consistent results among populations with different ethnicity, they have not assessed the ability of the two adhesion molecules to differentiate proliferative LN from membranous LN. We would include the three cell adhesion molecules in our prospective LN biomarker validation study. Moreover, given that these three Ig SF CAM members have been documented to be potential biomarkers in active LN, they suggest a potential pathogenic role of cell adhesion molecules in LN. Given the important role of ALCAM in T cell activation and in mediating cell adhesion to the endothelium [10], it is reasonable to hypothesize that ALCAM plays a pivotal role in the development of LN, which is worthy of mechanistic studies in the future.

Given the fact that the expression of ALCAM was also increased in type 2 diabetic nephropathy patients' glomeruli, ALCAM might not be specific to renal disease in SLE. The increased urinary ALCAM might reflect series

processes of inflammation at the kidney level. One of the limitations of the current study is the lack of chronic kidney disease patients as disease controls. However, our goal in this study was not to validate the diagnostic role of urinary ALCAM in differentiating LN from other chronic kidney diseases. Instead, we focused on the role of urinary ALCAM in gauging renal pathology in LN patients. Given the limited number of inactive LN patients in this study, further validation studies are needed before urinary ALCAM can be considered for clinical practice.

## Conclusion

In summary, our observations indicate that urinary ALCAM is a potential non-invasive biomarker of renal histopathology in LN patients. Urinary ALCAM showed ability to discriminate class III/IV from V lupus nephritis. It outperformed conventional markers (anti-dsDNA antibody, C3, C4, 24-h urine protein) in distinguishing class III/IV  $\pm$  V from pure class V LN. Urinary ALCAM is reflective of renal pathology activity index in lupus nephritis.

## Supplementary information

**Supplementary information** accompanies this paper at <https://doi.org/10.1186/s13075-020-02209-9>.

**Additional file 1 : Supplemental Table 1.** Correlation analysis of ALCAM and patients' characteristics.

## Abbreviations

LN: Lupus nephritis; SLE: Systemic lupus erythematosus; dsDNA: Anti-double-stranded DNA; ALCAM or CD166: Activated leukocyte cell adhesion molecule; ACR: American College of Rheumatology; SLEDAI: Systemic Lupus Erythematosus Disease Activity Index; SLICC RAS: SLICC renal activity score; ISN/RPS: International Society of Nephrology/Renal Pathological Society; aLN: Active LN group; aNR: Active SLE without renal involvement group; iLN: Inactive LN patients; iNR: Inactive SLE patients without renal involvement; C3: Complement component 3; C4: Complement component 4; IQR: Interquartile range; SD: Standard deviation; ANOVA: One-way analysis of variance; ROC: Receiver operating characteristic; PPV: Positive predictive value; NPV: Negative predictive value; AUC: Area under the curve; AI: Activity index; CI: Chronicity index

## Acknowledgements

All samples used in this study were obtained from Renji Hospital Biobank, Shanghai Jiaotong University School of Medicine; all the donors signed the informed consent. Renji Hospital Biobank is funded by the National Human Genetic Resources Sharing Service Platform (2005DKA21300).

## Authors' contributions

NS and CM conceived of the study, designed the framework of the study, and revised the manuscript. HD, CL, and JC acquired the data, collected the clinical information, and drafted the manuscript. HD, QG, and MD followed patients, performed renal biopsy, and drafted the manuscript. HD and CL performed the statistical analysis and interpreted the data. All authors read, revised, and approved the final version.

## Funding

This study was supported by the National Natural Science Foundation of China grants 81421001, 31630021, and 31930037, and Shanghai municipal key medical center construction project (2017ZZ01024-002). This study was also supported by the "Lupus Research Alliance".

## Availability of data and materials

The datasets generated and/or analyzed during the current study available from the corresponding author on reasonable request.

## Ethics approval and consent to participate

This study was approved by the ethics committee of Renji Hospital, Shanghai Jiao Tong University School of Medicine, and conducted in accordance with good clinical practice. All participants gave their informed consent to participate.

## Consent for publication

All participants gave their informed consent to publication.

## Competing interests

The authors declare that they have no competing interests.

## Author details

<sup>1</sup>Department of Rheumatology, Shanghai Institute of Rheumatology, Renji Hospital, Shanghai Jiao Tong University School of Medicine, 145 Shandong (M) Rd, Shanghai 200001, China. <sup>2</sup>Department of Biomedical Engineering, University of Houston, 3517 Cullen Blvd, Room 2027, Houston, TX 77204-5060, USA. <sup>3</sup>China-Australia Centre for Personalized Immunology, Renji Hospital, School of Medicine, Shanghai Jiao Tong University, Shanghai, China. <sup>4</sup>State Key Laboratory of Oncogenes and Related Genes, Shanghai Cancer Institute, Renji Hospital, Shanghai Jiao Tong University School of Medicine (SJTUSM), Shanghai 200032, China. <sup>5</sup>Shenzhen Futian Hospital for Rheumatic Diseases, Shenzhen 518040, China. <sup>6</sup>Center for Autoimmune Genomics and Etiology, Cincinnati Children's Hospital Medical Center, Cincinnati, OH, USA. <sup>7</sup>Department of Pediatrics, University of Cincinnati College of Medicine, Cincinnati, OH, USA.

Received: 10 March 2020 Accepted: 1 May 2020

Published online: 27 May 2020

## References

- Mohan C, Putterman C. Genetics and pathogenesis of systemic lupus erythematosus and lupus nephritis. *Nat Rev Nephrol.* 2015;11:329–41.
- Almaani S, Meara A, Rovin BH. Update on lupus nephritis. *Clin J Am Soc Nephrol.* 2017;12:825–35.
- Maroz N, Segal MS. Lupus nephritis and end-stage kidney disease. *Am J Med Sci.* 2013;346:319–23.
- Mok CC. Biomarkers for lupus nephritis: a critical appraisal. *J Biomed Biotechnol.* 2010;2010:638413. Published online 2010 Apr 19. <https://doi.org/10.1155/2010/638413>.
- Birmingham DJ, Merchant M, Waikar SS, Nagaraja H, Klein JB, Rovin BH. Biomarkers of lupus nephritis histology and flare: deciphering the relevant amidst the noise. *Nephrol Dial Transplant.* 2017;32:i71–9.
- Stanley S, Vanarsa K, Soliman S, Habazi D, Pedroza C, Gidley G, et al. Comprehensive aptamer-based screening identifies a spectrum of urinary biomarkers of lupus nephritis across ethnicities. *Nat Commun* 2020;11:2197.
- Swart GWM. Activated leukocyte cell adhesion molecule (CD166/ALCAM): developmental and mechanistic aspects of cell clustering and cell migration. *Eur J Cell Biol.* 2002;81:313–21.
- Bech-Serra JJ, Santiago-Josefat B, Esselens C, Saftig P, Baselga J, Arribas J, et al. Proteomic identification of desmoglein 2 and activated leukocyte cell adhesion molecule as substrates of ADAM17 and ADAM10 by difference gel electrophoresis. *Mol Cell Biol.* 2006;26:5086–95.
- Ikeda K, Quertermous T. Molecular isolation and characterization of a soluble isoform of activated leukocyte cell adhesion molecule that modulates endothelial cell function. *J Biol Chem.* 2004;279:55315–23.
- Zimmerman AW, Joosten B, Torensma R, Parnes JR, Van Leeuwen FN, Figdor CG. Long-term engagement of CD6 and ALCAM is essential for T-cell proliferation induced by dendritic cells. *Blood.* 2006;107:3212–20.
- Cayrol R, Wosik K, Berard JL, Dodelet-Devillers A, Ifergan I, Kebir H, et al. Activated leukocyte cell adhesion molecule promotes leukocyte trafficking into the central nervous system. *Nat Immunol.* 2008;9:137–45.
- Teramoto K, Negoro N, Kitamoto K, Iwai T, Iwao H, Okamura M, et al. Microarray analysis of glomerular gene expression in murine lupus nephritis. *JPharmacolSci.* 2008;106:56–67.
- Mok CC. Towards new avenues in the management of lupus glomerulonephritis. *Nat Rev Rheumatol.* 2016;12(4):221–34.



14. Petri M, Orbai AM, Alarcón GS, Gordon C, Merrill JT, Fortin PR, et al. Derivation and validation of the systemic lupus international collaborating clinics classification criteria for systemic lupus erythematosus. *Arthritis Rheum.* 2012;64:2677–86.
15. Gladman DD, Ibanez D, Urowlitz MB. Systemic lupus erythematosus disease activity index 2000. *J Rheumatol.* 2002;29:288–91.
16. Weening JJ, D'Agati VD, Schwartz MM, Seshan SV, Alpers CE, Appel GB, et al. The classification of glomerulonephritis in systemic lupus erythematosus revisited. *Kidney Int.* 2004;65:521–30.
17. Masedunskas A, King JA, Tan F, Cochran R, Stevens T, Sviridov D, et al. Activated leukocyte cell adhesion molecule is a component of the endothelial junction involved in transendothelial monocyte migration. *FEBS Lett.* 2006;580:2637–45.
18. Erturk K, Tastekin D, Bilgin E, Serilmez M, Bozbey HU, Sakar B. Serum activated leukocyte cell adhesion molecule and intercellular adhesion molecule-1 in patients with gastric cancer: can they be used as biomarkers? *Biomed Pharmacother.* 2016;77:86–91.
19. Tachezy M, Effenberger K, Zander H, Minner S, Gebauer F, Vashist YK, et al. ALCAM (CD166) expression and serum levels are markers for poor survival of esophageal cancer patients. *Int J Cancer.* 2012;131:396–405.
20. Egloff SAA, Du L, Loomans HA, Starchenko A, Su P-F, Ketova T, et al. Shed urinary ALCAM is an independent prognostic biomarker of three-year overall survival after cystectomy in patients with bladder cancer. *Oncotarget.* 2016;8:722–41.
21. Suh MJ, Tovchigrechko A, Thovarai V, Rolfe MA, Torralba MG, Wang J, et al. Quantitative differences in the urinary proteome of siblings discordant for type 1 diabetes include lysosomal enzymes. *J Proteome Res.* 2015;14:3123–35.
22. Sulaj A, Kopf S, Gröne E, Gröne H-J, Hoffmann S, Schleicher E, et al. ALCAM a novel biomarker in patients with type 2 diabetes mellitus complicated with diabetic nephropathy. *J Diabetes Complicat.* 2017;31:1058–65.
23. Bertsias GK, Tektonidou M, Amoura Z, Aringer M, Bajema I, Berden JHM, et al. Joint European League Against Rheumatism and European Renal Association-European Dialysis and Transplant Association (EULAR/ERA-EDTA) recommendations for the management of adult and paediatric lupus nephritis. *Ann Rheum Dis.* 2012;71:1771–82.
24. Hahn BH, McMahon MA, Wilkinson A, Wallace WD, Daikh DI, Fitzgerald JD, et al. American College of Rheumatology guidelines for screening, treatment, and management of lupus nephritis. *Arthritis Care Res (Hoboken).* 2012;64:797–808.
25. Suzuki M, Wiers K, Brooks EB, Greis KD, Haines K, Klein-Gitelman MS, et al. Initial validation of a novel protein biomarker panel for active pediatric lupus nephritis. *Pediatr Res.* 2009;65:530–6.
26. Landolt-Marticorena C, Prokopec SD, Morrison S, Noamani B, Bonilla D, Reich H, et al. A discrete cluster of urinary biomarkers discriminates between active systemic lupus erythematosus patients with and without glomerulonephritis. *Arthritis Res Ther.* 2016;18:218.
27. Yoo CW, Kim MK, Lee HS. Predictors of renal outcome in diffuse proliferative lupus nephropathy: data from repeat renal biopsy. *Nephrol Dial Transplant.* 2000;15:1604–8.
28. Moroni G, Vercelloni PG, Quaglini S, Gatto M, Gianfreda D, Sacchi L, et al. Changing patterns in clinical-histological presentation and renal outcome over the last five decades in a cohort of 499 patients with lupus nephritis. *Ann Rheum Dis.* 2018;77:1318–25.
29. Ichinose K, Kitamura M, Sato S, Fujikawa K, Horai Y, Matsuoka N, et al. Factors predictive of long-term mortality in lupus nephritis: a multicenter retrospective study of a Japanese cohort. *Lupus.* 2019;28(3):295–303.
30. Wu T, Xie C, Wang HW, Zhou XJ, Schwartz N, Calixto S, et al. Elevated urinary VCAM-1, P-selectin, soluble TNF receptor-1, and CXC chemokine ligand 16 in multiple murine lupus strains and human lupus nephritis. *J Immunol.* 2007;179:7166–75.
31. Edelbauer M, Kshirsagar S, Riedl M, Haffner D, Billing H, Tönshoff B, et al. Markers of childhood lupus nephritis indicating disease activity. *Pediatr Nephrol.* 2011;26:401–10.
32. Abd-Elkareem MI, Al THM, Khamis OA, Abdellatif SS, MRA H. Increased urinary levels of the leukocyte adhesion molecules ICAM-1 and VCAM-1 in human lupus nephritis with advanced renal histological changes: preliminary findings. *Clin Exp Nephrol.* 2010;14:548–57.
33. Howe HS, Kong KO, Thong BY, Law WG, Chia FLA, Lian TY, et al. Urine sVCAM-1 and sICAM-1 levels are elevated in lupus nephritis. *Int J Rheum Dis.* 2012;15:13–6.
34. Kiani AN, Wu T, Fang H, Zhou XJ, Ahn CW, Magder LS, et al. Urinary vascular cell adhesion molecule, but not neutrophil gelatinase-associated lipocalin, is associated with lupus nephritis. *J Rheumatol.* 2012;39:1231–7.
35. Singh S, Wu T, Xie C, Vanarsa K, Han J, Mahajan T, et al. Urine VCAM-1 as a marker of renal pathology activity index in lupus nephritis. *Arthritis Res Ther.* 2012;14:R164.
36. Soliman S, Mohamed FA, Ismail FM, Stanley S, Saxena R, Mohan C. Urine angiotensin and VCAM-1 surpass conventional metrics in predicting elevated renal pathology activity indices in lupus nephritis. *Int J Rheum Dis.* 2017;20:1714–27.
37. Skeoch S, Haque S, Pemberton P, Bruce IN. Cell adhesion molecules as potential biomarkers of nephritis, damage and accelerated atherosclerosis in patients with SLE. *Lupus.* 2014;23:819–24.
38. Parodis I, Gokaraju S, Zickert A, Vanarsa K, Zhang T, Habazi D, Botto J, Serdoura Alves C, Giannopoulos P, Larsson A, Svenungsson E. ALCAM and VCAM-1 as urine biomarkers of activity and long-term renal outcome in systemic lupus erythematosus. *Rheumatology.* 2019. <https://doi.org/10.1093/rheumatology/kez528>. [Epub ahead of print].

### Publisher's Note

Springer Nature remains neutral with regard to jurisdictional claims in published maps and institutional affiliations.

**Ready to submit your research? Choose BMC and benefit from:**

- fast, convenient online submission
- thorough peer review by experienced researchers in your field
- rapid publication on acceptance
- support for research data, including large and complex data types
- gold Open Access which fosters wider collaboration and increased citations
- maximum visibility for your research: over 100M website views per year

**At BMC, research is always in progress.**

Learn more [biomedcentral.com/submissions](https://biomedcentral.com/submissions)

